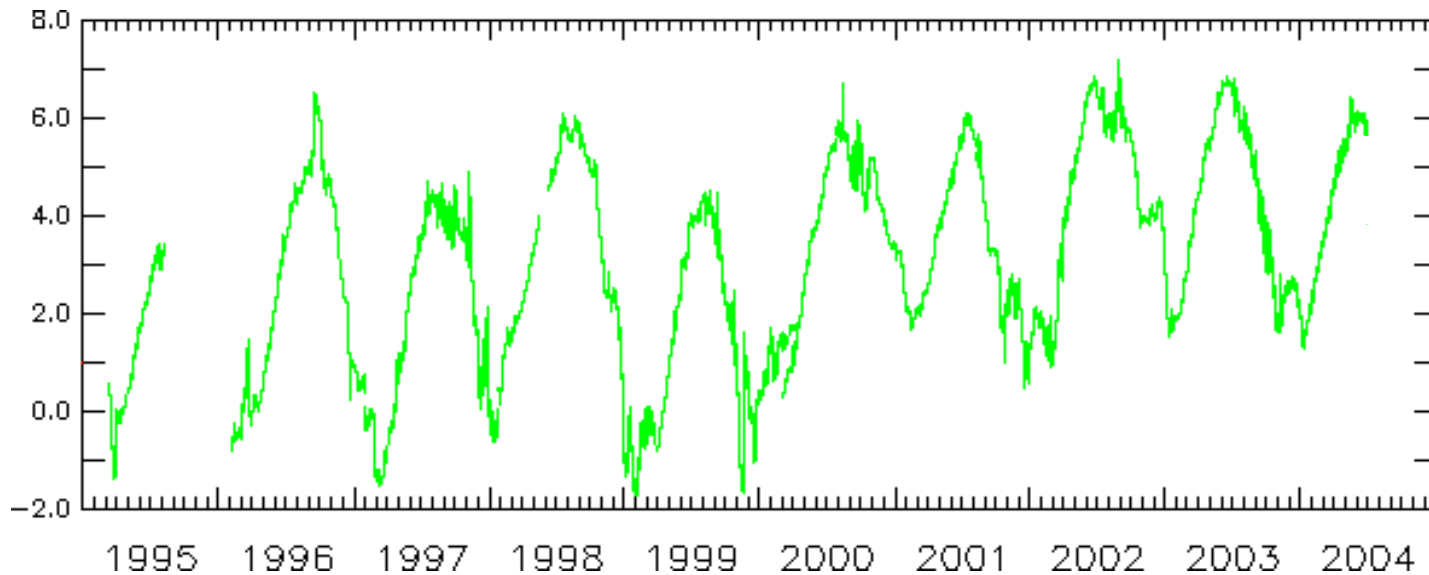


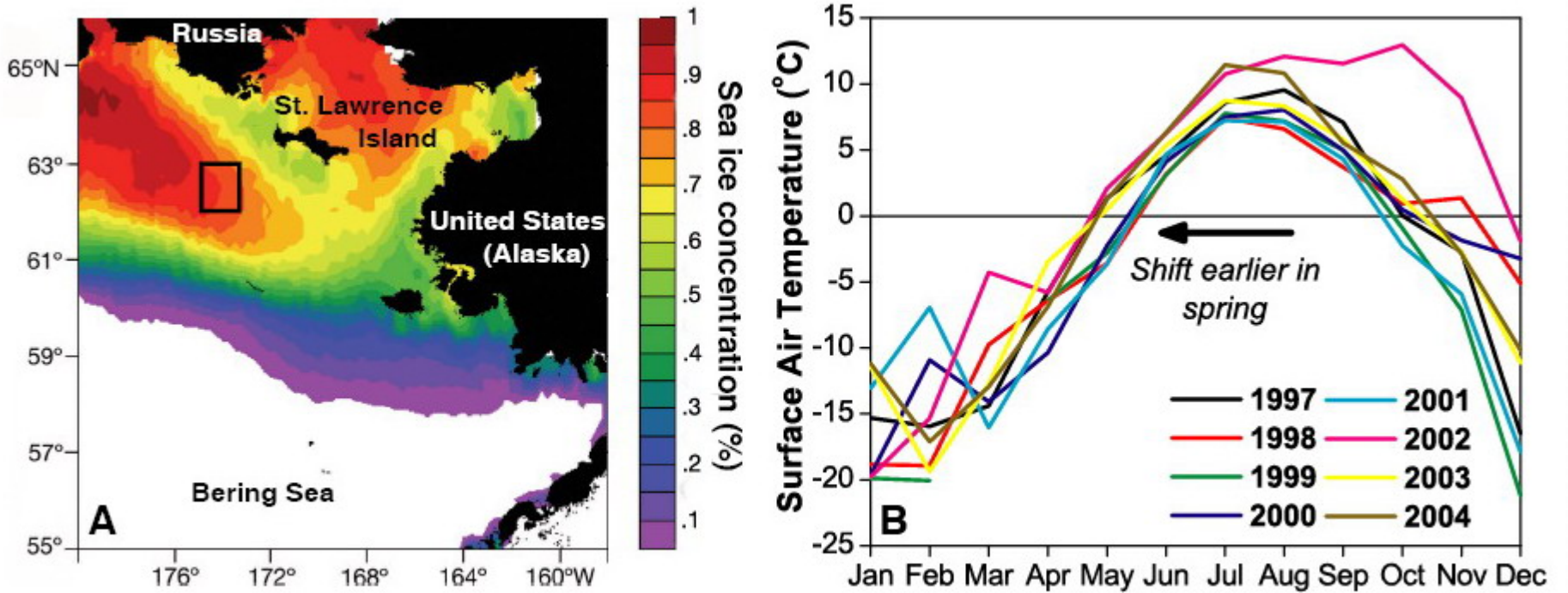
Recent loss of sea ice in southern Bering Sea –Spring 2000-2005



Vertically Averaged Temperature ($^{\circ}\text{C}$) at M2: 2 deg C increase in winter after 2000 Above freezing point



Northern Bering Sea Ice Concentration (Aprils 2000-2004) and St. Lawrence Temperature Changes

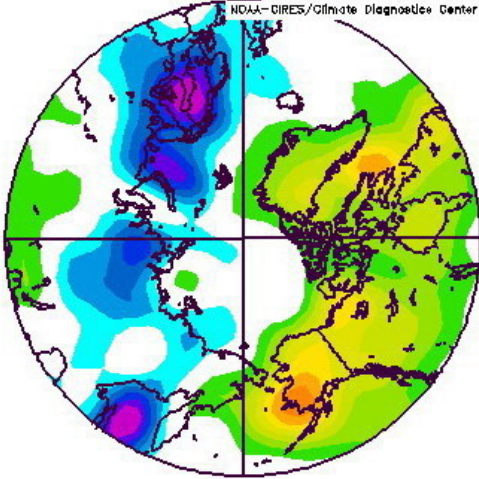


Coming out in *Science*

Climate Patterns

Temperature Anomalies

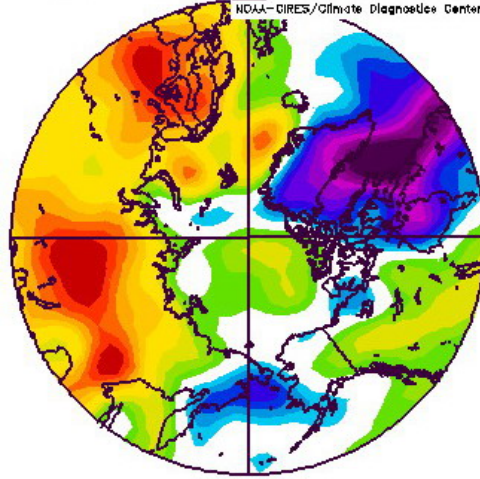
NCEP/NCAR Reanalysis
1000mb air (C) Composite Anomaly 1968-1996 climo
NOAA-CIRES/Climate Diagnostics Center



Dec to Mar: 1977 to 1988

1977-1988 (PNA+)
Pacific North American

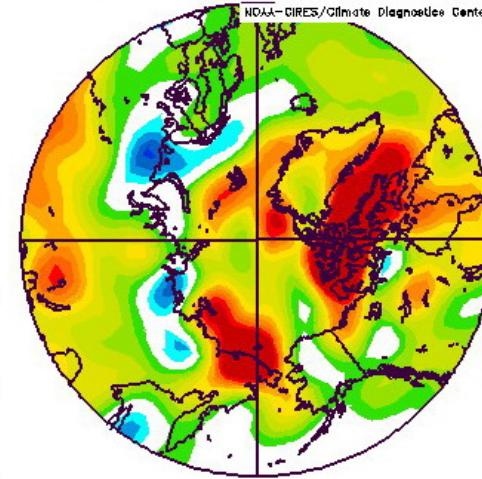
NCEP/NCAR Reanalysis
1000mb air (C) Composite Anomaly 1968-1996 climo
NOAA-CIRES/Climate Diagnostics Center



Dec to Mar: 1989 to 1995

1989-1995 (AO+)
Arctic Oscillation

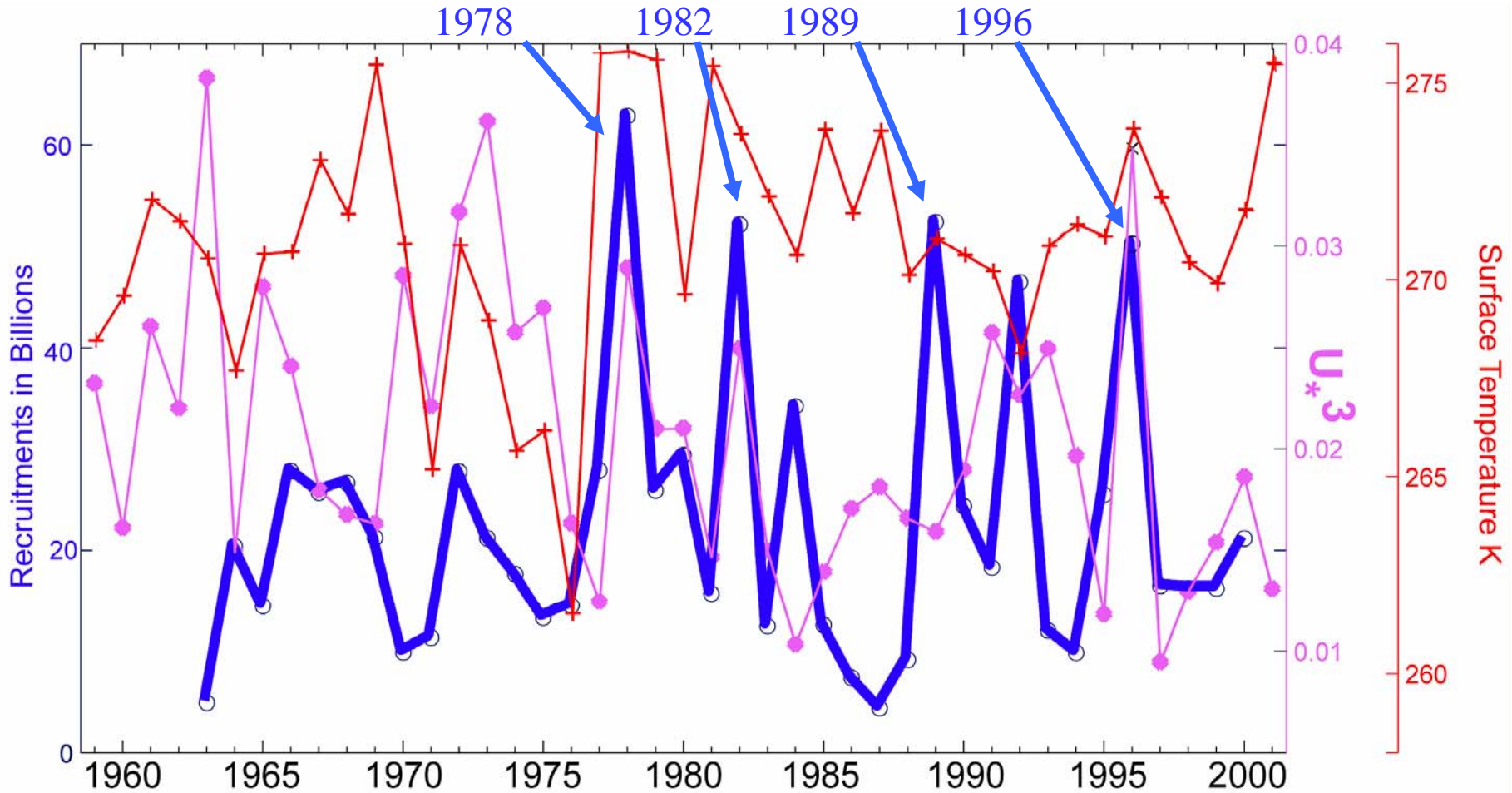
NCEP/NCAR Reanalysis
1000mb air (C) Composite Anomaly 1968-1996 climo
NOAA-CIRES/Climate Diagnostics Center



Dec to Mar: 1996 to 2004

1996-2004 (Arctic Warm)

Pollock Recruitment with Summer Wind Mixing & Winter Surface Temperature



Bering Climate

Bering Sea Status Quick View Data Science Essays Info > Home

Data Information: Description Relevance Recent Trend All Info

Reset

Data Access: List Data Display Download Correlation

Climate Indices Atmosphere Ocean Fishery Biology

Aleutian low Favorable wind Ice cover Alaska plaice Diversity

Arctic Osc.

East Pacific

El Niño

North Pacific

PDO

PNA

Siberian/Alaskan

West Pacific

Bering Climate

Bering Sea Status Quick View Data Science Essays Info

What is happening to whales in the Bering Sea?

Dr. Sue Moore

Director, National Marine Mammal Laboratory
NOAA/NMFS/Alaska Fisheries Science Center

Whales in the Bering Sea

Cetaceans all belong to the same taxonomic order called Cetacea. The distribution and abundance in the Bering Sea is poorly understood. Recent reviews of cetaceans' role in the ecosystem are largely unknown. Commercial harvests of baleen whales (mysticetes) in the North Pacific and Bering Sea, especially between 1835 and 1850 and between 1965 and 1979 for fin whales (*Balaena japonica*) and humpback whales (*Megaptera novaeangliae*). The removals on the marine ecosystem is largely unknown. Harvests of toothed whales (odontocetes) are sometimes inadvertently taken in commercial fishing operations. Pelagic dolphins and Dall's porpoise were

