

One too many buybacks?

The likely consequences of the decommissioning scheme on the Dutch fishery and fishing communities

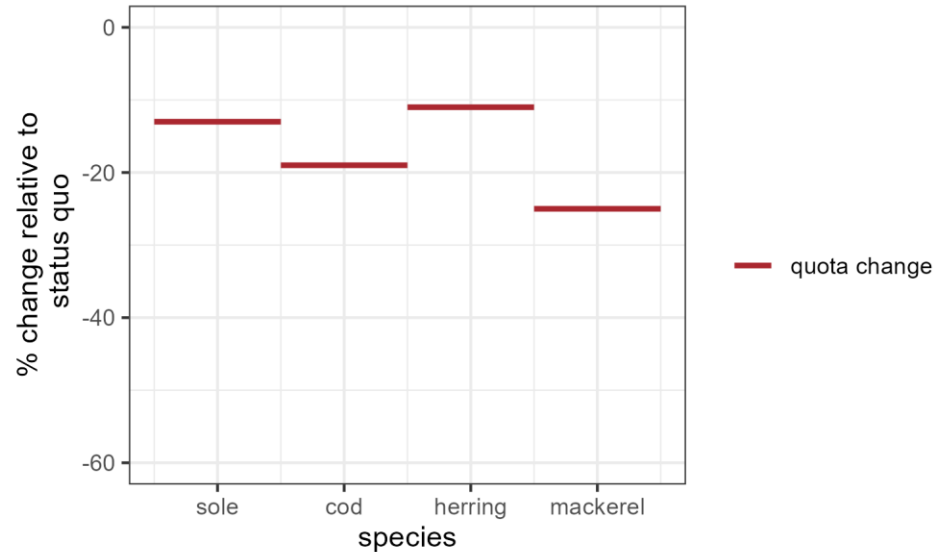
MSEAS 2024 – Yokohama, Katell Hamon, Hoekstra, F. F., Klok, A., **Kraan, M.**, van der Veer, S., Deetman, B., van Oostenbrugge, J. A. E., & Taal, K.



Decommissioning scheme following BREXIT negotiations



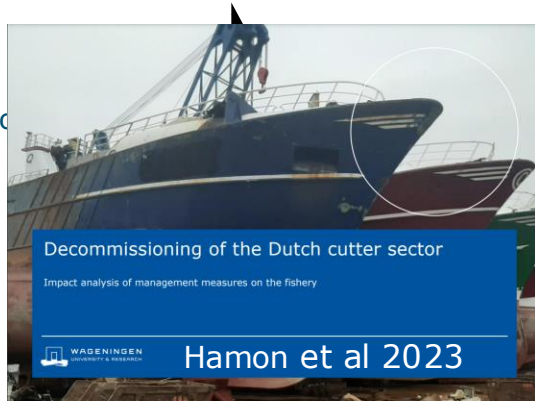
- Decrease in the Dutch share of quota for sole, cod, herring, mackerel



- Decommissioning scheme → balance fleet with quotas
- €155m available

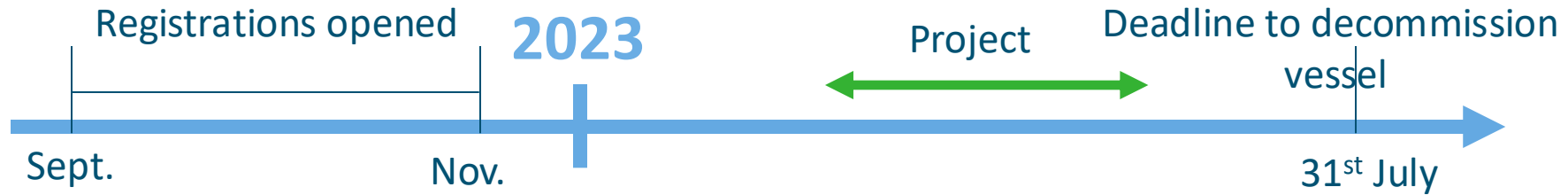
Three partial studies performed

Regional impact



Last part of the project,
building a model
being conducted now

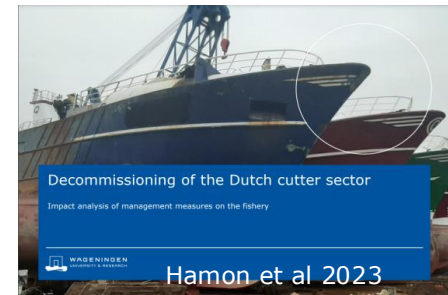
Scenarios to capture uncertainty



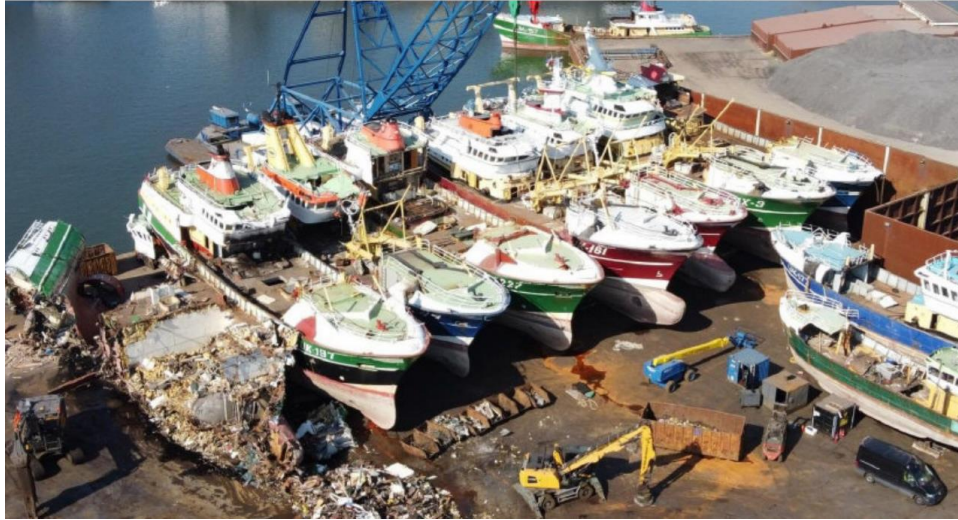
- Short & politically sensitive project → no in depth fishers interviews
- Uncertainty on:
 - Actual number of vessels decommissioning
 - Reaction of the remaining fleet

Sensitivity analysis,
100% registered,
90%, 80%

- Two options:
- No reaction
 - Increase of fishing effort



We **now** already know some of the outcomes...



<https://visserij.nl/2023/08/05/aanvragen-saneringsregeling-kotters-valt-lager-uit/>

71 vessels in the study on list to apply for decommissioning [from 139 eligible vessels]

In the end 51 vessels actually were [allowed to] decommission (72%)

But at the time of our research, this was not known yet.

Question was – what impact is foreseen?



The impact on the fleet (1)

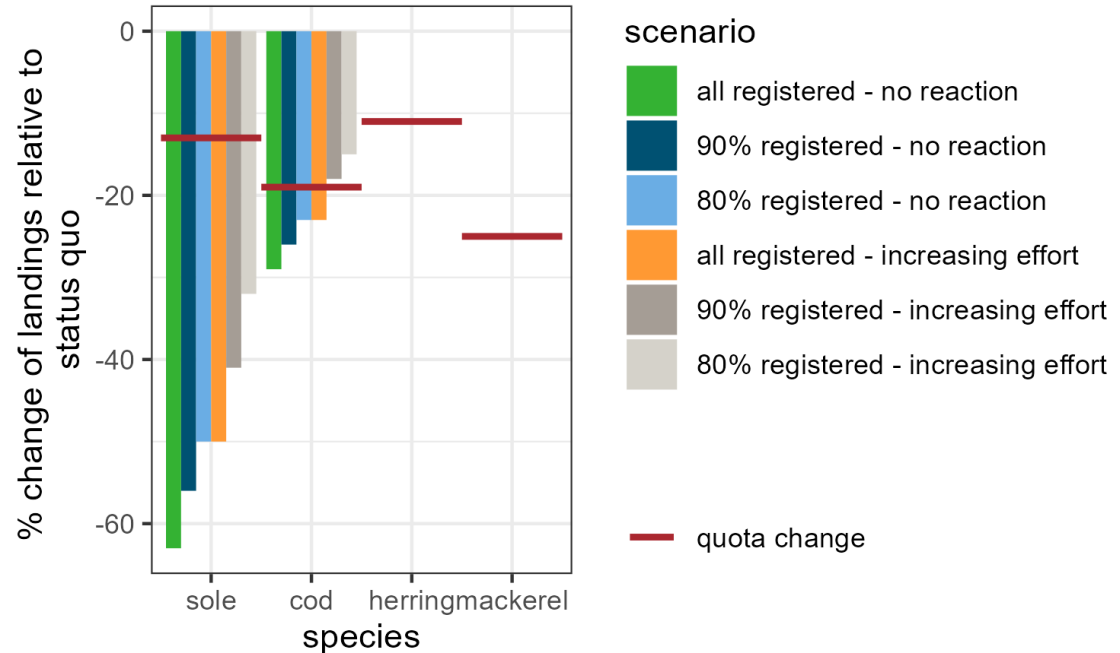
- Mainly beam trawlers registered (80% of their effort)
- Targeting flatfish (sole and plaice)
- No pelagic trawlers registered
- Context :
 - end of pulse licences (mid 2021)
 - low catchability of target species (sole)
 - High fuel prices
 - Uncertainty about regulations



→ Lack of future perspectives

The impact on the fleet (2)

- Sole landings in balance with post-Brexit quotas, unlike pelagic
- Risk of cod becoming a choke species



All regions will be impacted...

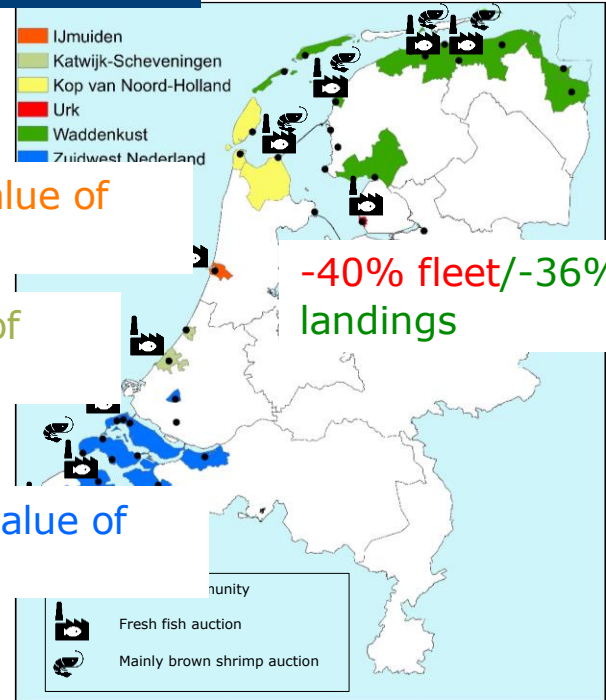
... in terms of fishing vessels or landings

-13% fleet / -42% value of landings

0% fleet / -21% value of landings

-12% fleet / -8% value of landings

-9% fleet / -36% value of landings



The impact on the chain

- Auction in Den Helder shut down.
- Risk that fisheries value chain in the future will not be equipped for processing and trading North Sea Fish.
 - Processing companies increasingly rely on imported fish
 - Ancillary services switch focus
 - Vocational training less applicants
 - Lack of trained fishers
 - Maintenance and building of cutters (wharfs)
 - Technical support in harbours for vessels

“A day without fish at the auction. And many more to follow. At the left how it used to be 25 years ago. Now a stack of 9.000 clean and empty crates. And a shrunken fleet in the harbour. We have arrived in bad movie”.



Eer
volg
sch
visk
ont
film

Translate Tweet



12:54 PM · Nov 11, 2022 · Twitter for iPhone

13 Retweets 2 Quote Tweets 14 Likes

The impact on the fishing community(ies)

- A lot of personal drama! (ripple effect)
- NL is losing it's 'anchor-points' on land
 - Fleet per community (effect on fishing festivals, community support) some becoming 'historical fishing communities'
- Fishing predominantly (still) is a family business, with positive effects for communities
- Due to all changes, doubt if fisheries still has 'a place'?
- Serious lack of trust amongst fishers vis a vis the government



Photo's: Kraan

To be continued...

- Towards a better integration of activities at sea with social and economic impacts on land
- Nationally in the Netherlands, a number of projects:
 - Building a behavioural model of fisheries to understand the social and economic effects of policies (3rd phase)
 - Understanding the social and economic effects of more offshore windparks (MONS)
 - Underlying: better understand fisher behaviour
- EU project Seawise integrate the human dimensions in ecosystem approach to fisheries management



Questions?

For more information:

Katell.Hamon@wur.nl (fleet)

Marloes.kraan@wur.nl (communities)

Geert.Hoekstra@wur.nl (chain)

