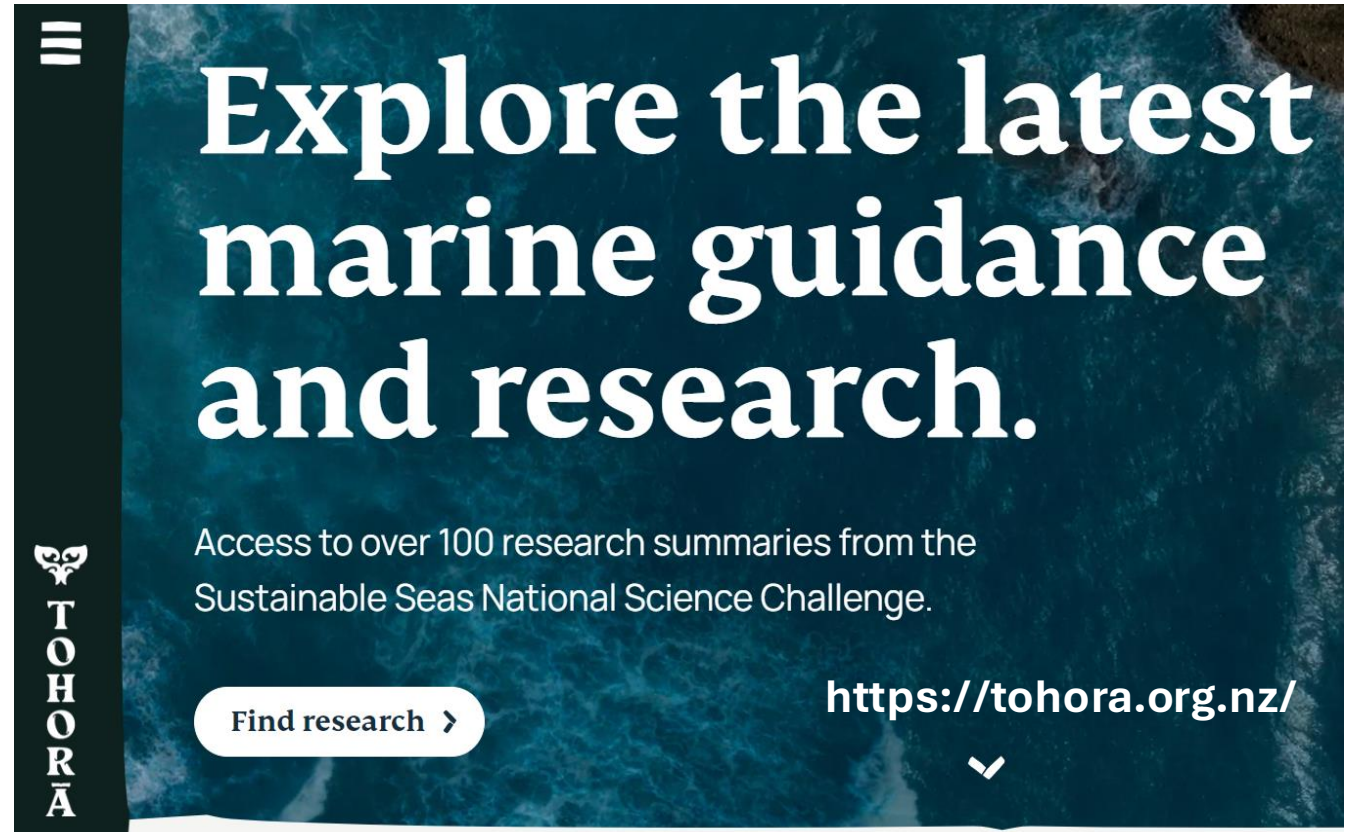


Framing and building a Blue Economy in Aotearoa New Zealand

Nicolas Lewis

University of Auckland

Sustainable Seas National
Science Challenge

A banner for the Tohora research platform. The background is a dark blue, textured image of water. On the left, there is a vertical black bar with a white hamburger menu icon at the top, a white owl logo in the middle, and the word 'TOHORA' written vertically in white capital letters below the owl. The main text is in large, white, sans-serif font. Below the main text is a white button with the text 'Find research >'. To the right of the button is the URL 'https://tohora.org.nz/' and a white downward-pointing chevron icon.

☰

Explore the latest marine guidance and research.

Access to over 100 research summaries from the
Sustainable Seas National Science Challenge.

<https://tohora.org.nz/>

Find research >

TOHORA

National
SCIENCE
Challenges

SUSTAINABLE
SEAS

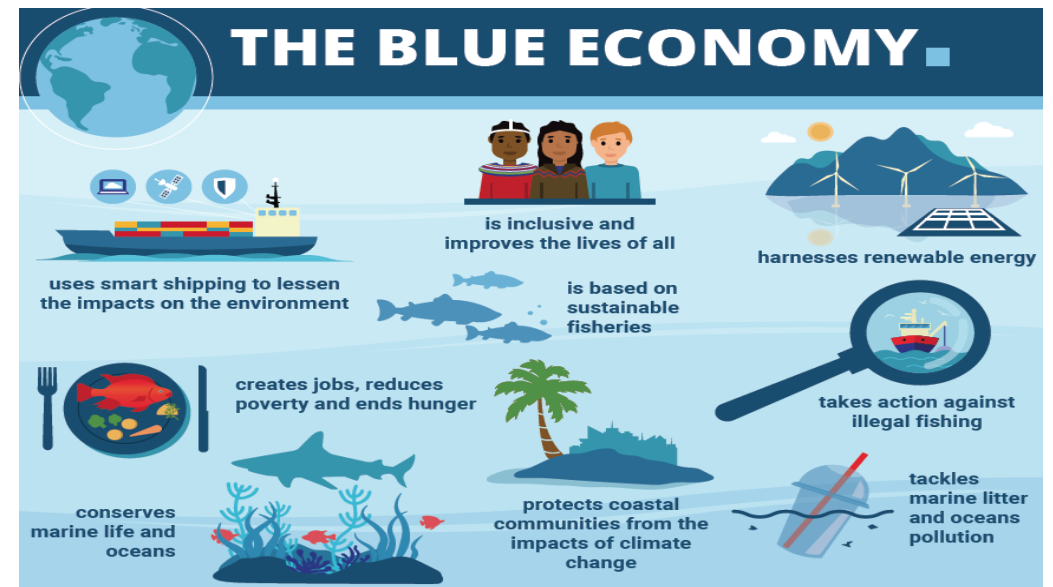
Ko ngā moana
whakauka

Blue economy: A global moment

Humanity's future depends on the oceans - vast opportunities but oceans need protection/restoration

Utilisation **MUST** be built on ecologically and socially sustainable foundations

Challenge is to balance resource use with safeguarding the delicate ecological and community relationships from which ocean resources derive their values



Meanwhile, in New Zealand



Marine economy on policy agenda:
degradation, growth, competing
interests

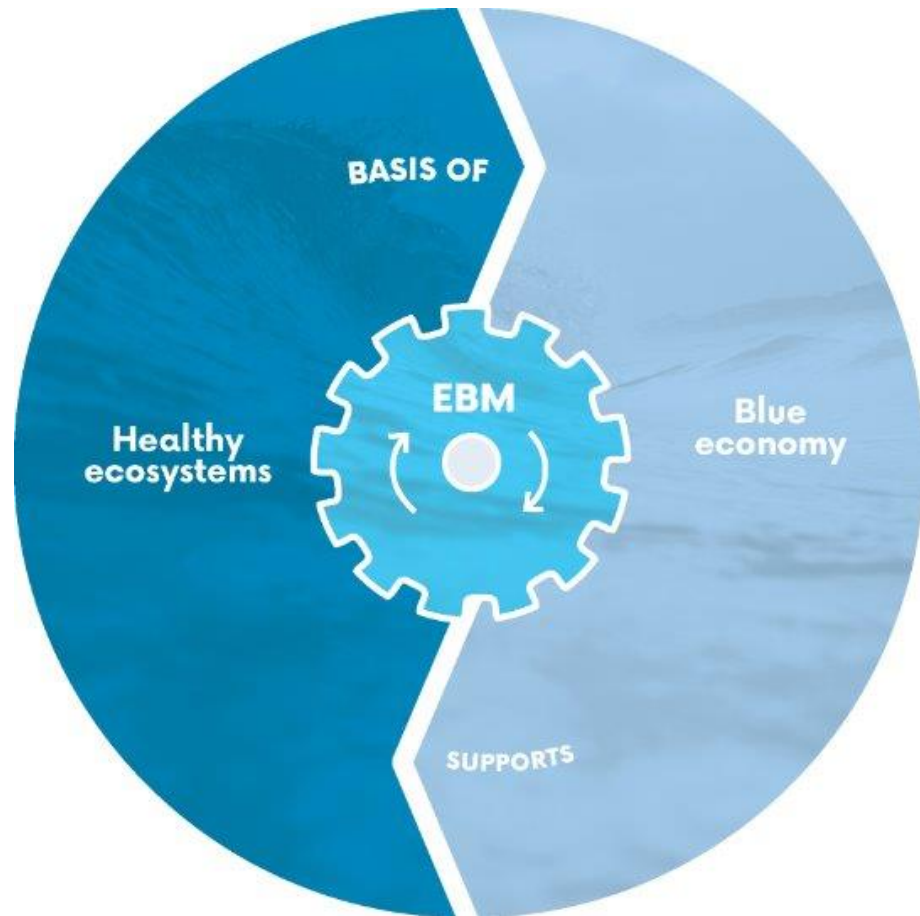
Sustainable Seas National Science
Challenge (10yrs, \$80m, 100 projects)

- ‘Enhance the utilisation of marine resources within environmental and biological limits’
- mandate to be disruptive
- dominance of ecologists

Māori increasingly prominent force –
economically, politically ... and for
intergenerational/holistic thinking,
centring of ocean health

➔ Healthy
oceans

The blue economy research theme



- A blue economy is an aspiration
- Growth cannot be sole/primary objective
- Need to transition towards resource uses that will safeguard oceans and support ‘their’ communities intergenerationally
- We have to do economy better – EBM as starting point
- Transitioning will not happen by itself

“marine activities that generate economic value and contribute positively to social, cultural and ecological well-being”

Framing work

Starting points – from marine to blue economy:

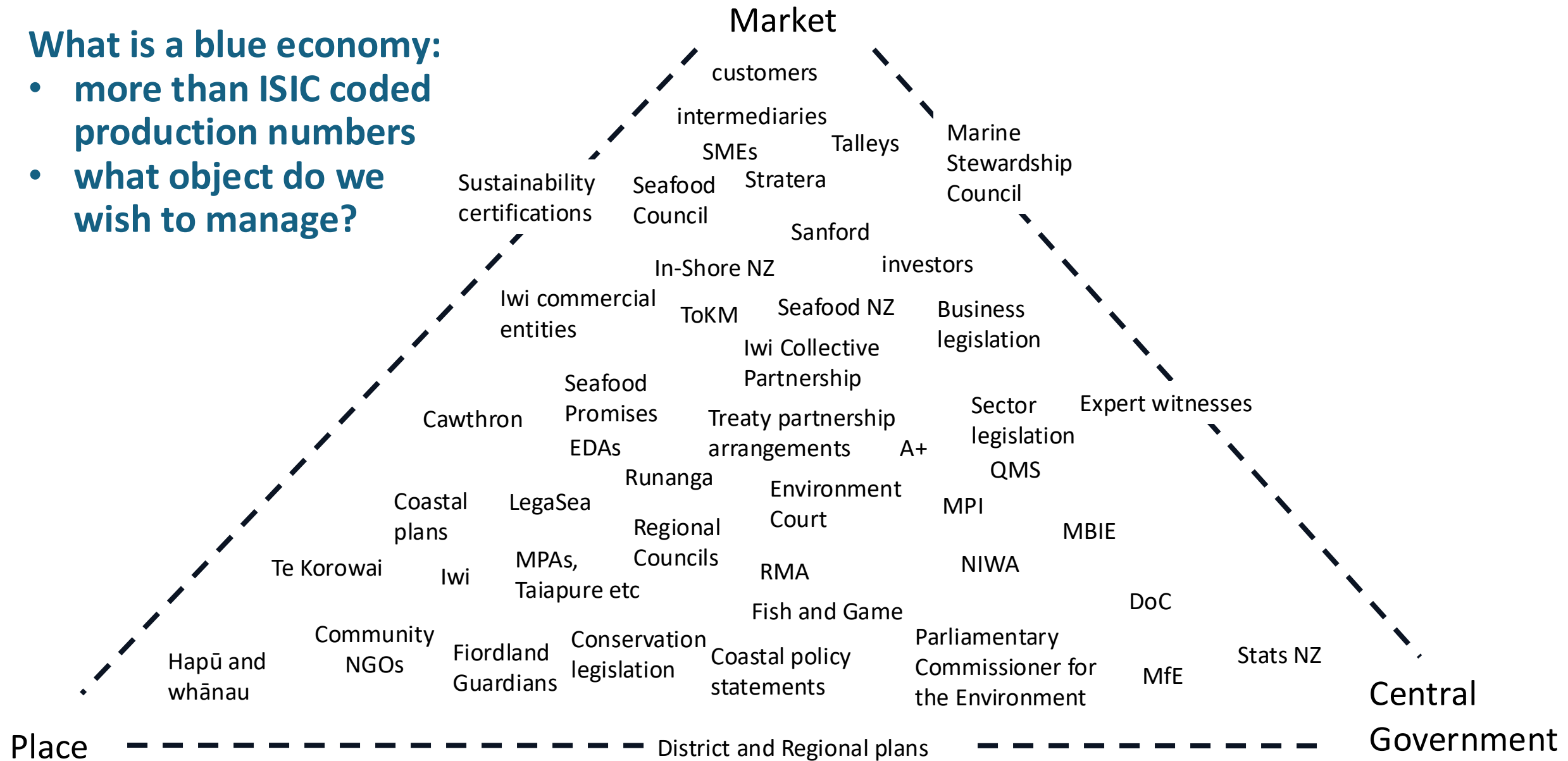
- Economy is practice/process of stewarding and mobilising resources to generate livelihoods
- Need to think seriously about objects of management
- Make a blue economy imaginable, visible and investable
- Multiple examples of doing things differently in the midst of a largely commodity economy

Aim: be aspirational, reframe the development debate, create/socialise knowledge /artefacts to advance transitions

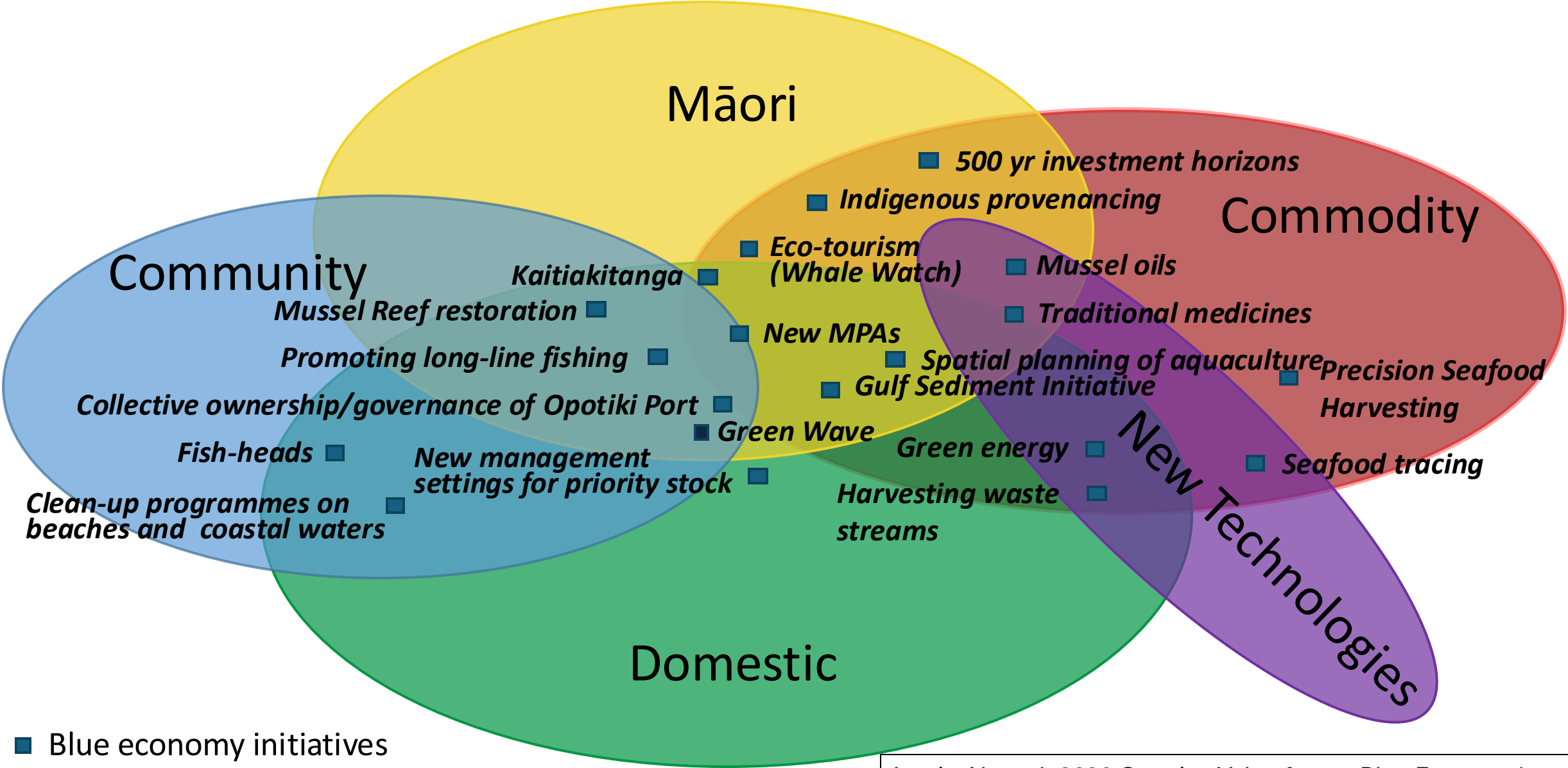


What is a blue economy:

- more than ISIC coded production numbers
- what object do we wish to manage?

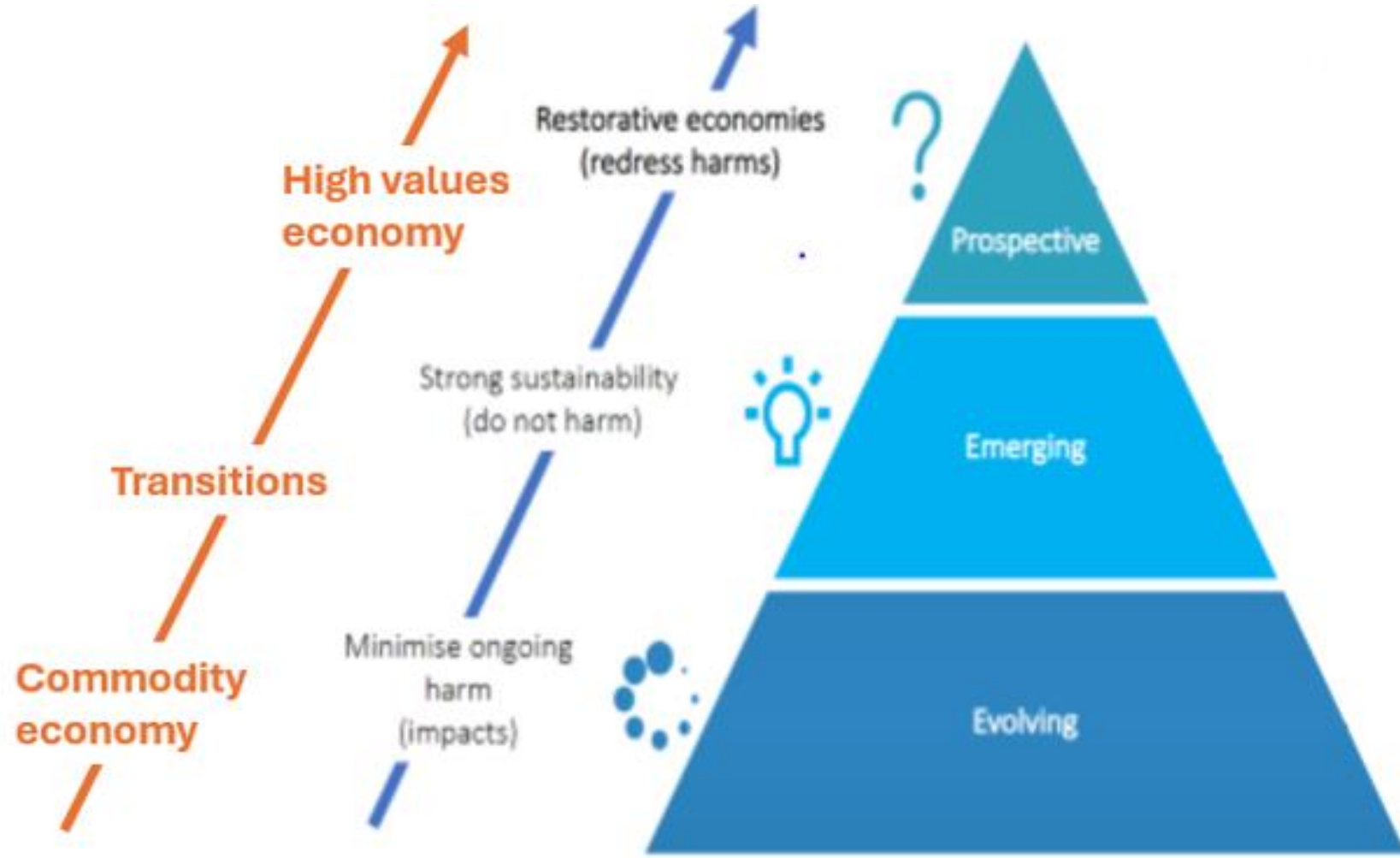


Diverse economic activities, diverse business models: baseline for transitioning



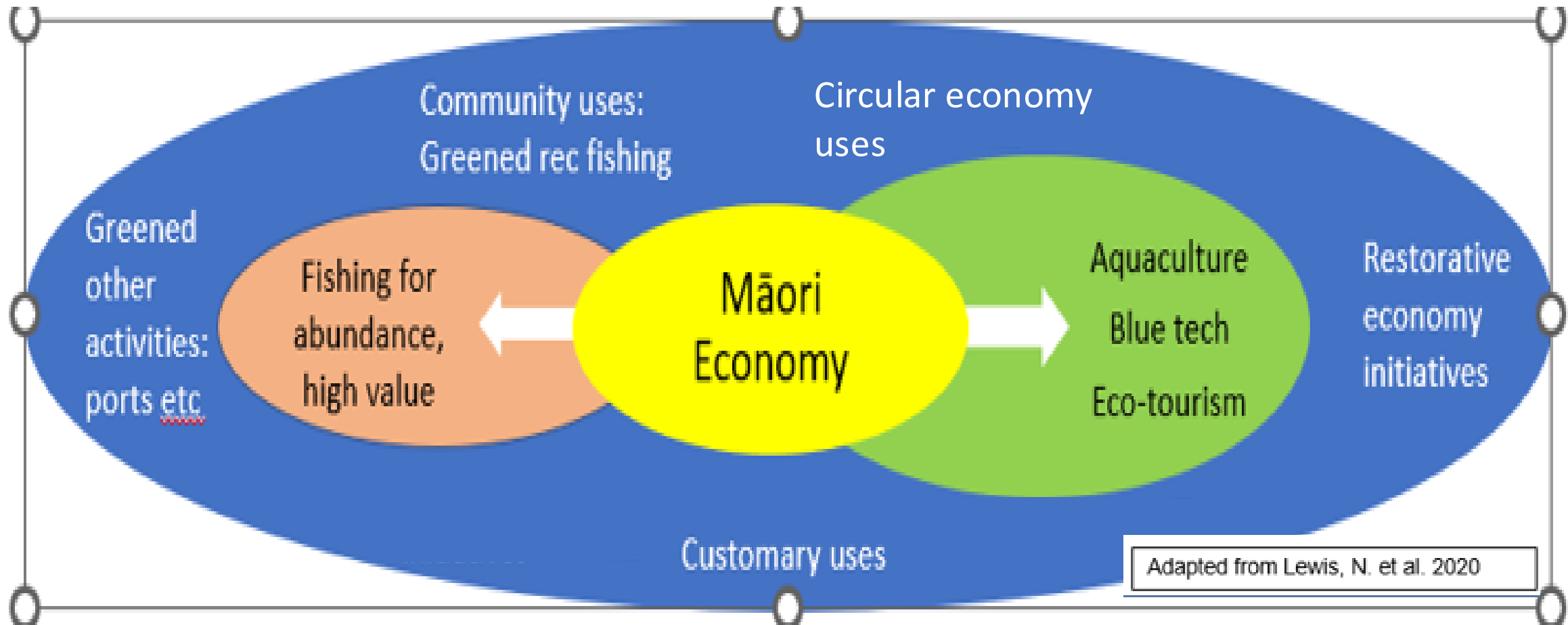
Broad-based transitions models

Sustainability-led transitions



Adapted from EnviroStrat 2019

Targeting sectors



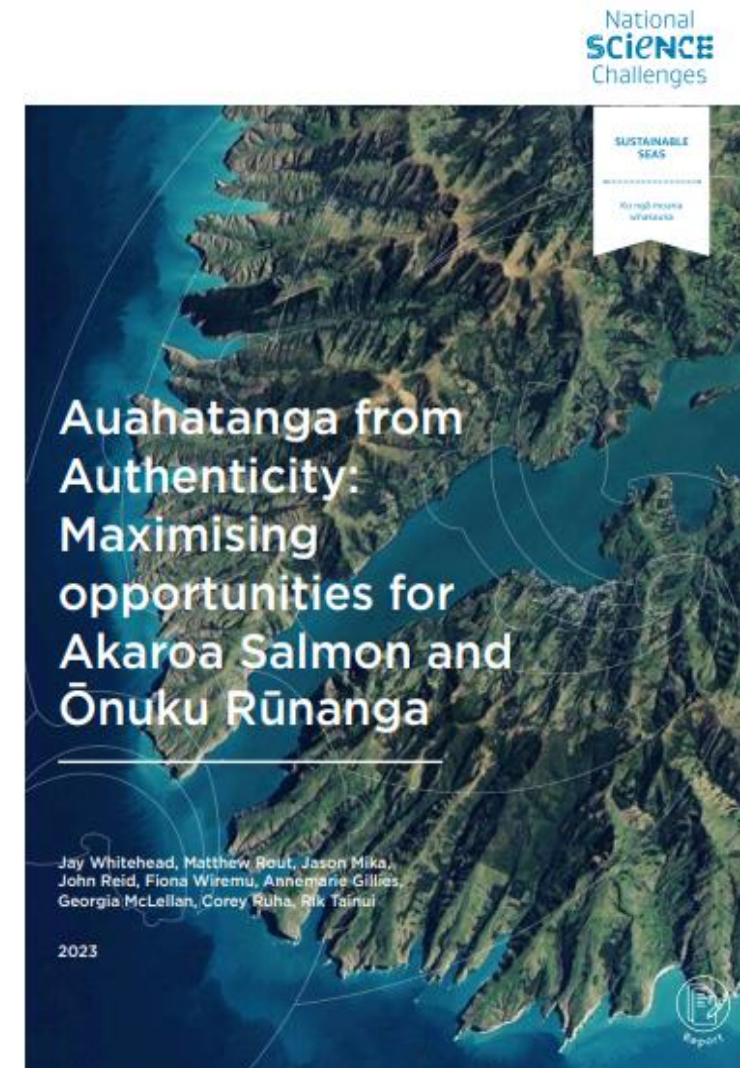
Research-led transitioning: Core Projects



Shaping the seaweed sector



Image: Scott Sinton, Greenwave NZ.



Reimagining innovation



Credit: Rebekah Parsons-King

Energy from tidal currents - Kick-starting a new marine industry with huge potential



Completed project

We investigated whether generating electricity from the strong tidal currents within Cook Strait is viable for Aotearoa New Zealand.



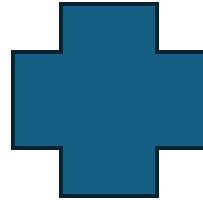
Credit: Chris Sisariel/NZStory

Quantifying seafloor contact



Active project

Investigating and reducing interactions between commercial fishing gear and the seafloor



Credit: Ngati Manuhiri Settlement Trust

Kohunga Kutai



Active project

Creating a sustainable supply of seed mussels using mātauranga Māori



Credit: Kiara Paū-Barke

Pātangaroa hua rau: the bioactive potential of sea stars



Active project

Investigating the economic potential of collagen and bioactives from 11-armed sea-stars to manage overpopulations



Credit: Lamprey and eel weir Whanganui River taken by James McDonald © Alexander Turnbull Library

Whakaika te Moana



Active project

Exploring traditional aquaculture practices to inform a hapū-based blue economy

MORE



Credit: Matakana Island © Shellie Evans

A novel approach to aquaculture in Aotearoa New Zealand



Active project

Growing community wellbeing with pātiki tōtara/yellowbelly flounder

What would it take to kickstart (make investable) a blue economy

Te Mana o te Moana

Prioritising the health and wellbeing of the moana informed by a Tiriti o Waitangi-led approach where the rights and responsibilities of tangata whenua are provided for.

Accountable

Adopting decision making and reporting frameworks that consider natural, social, and cultural effects of all proposed and actual uses of ocean resources.



Regenerative

Adopting practices that actively support and restore marine ecosystem health.

Blue economy principles

A blue economy for Aotearoa

Marine activities that generate economic value and contribute positively to ecological, cultural, and social well-being.

Inclusive

Engaging with communities to achieve multiple benefits for people and the environment.



Intergenerational

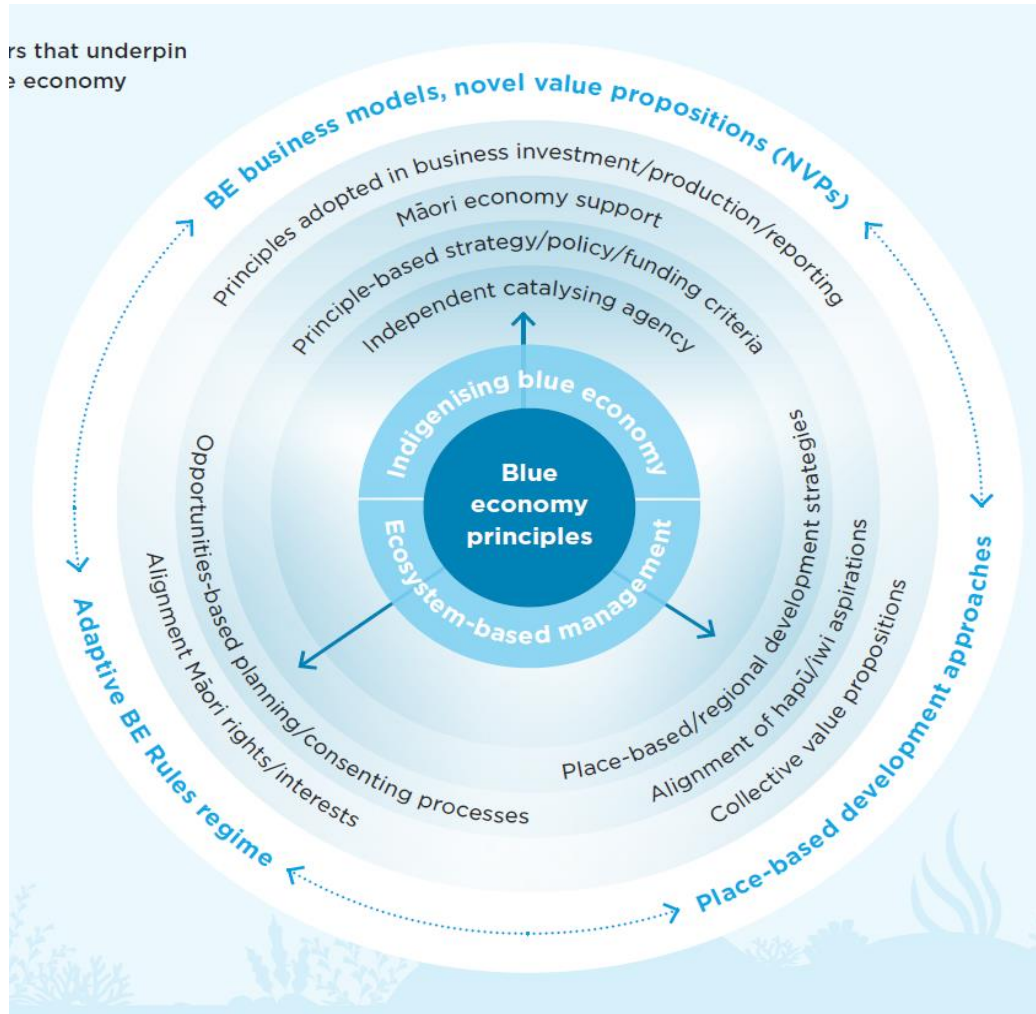
Empowering holistic governance and management that support the moana to provide for long term social, cultural, environmental, and economic well-being.



Prosperous

Actively transitioning towards resource use that is productive, sustainable, resilient and enhances the ocean and ocean-dependent livelihoods.

BE Principles at Work



Produced guidelines for use in practice

Socialised via regional road trips: government agencies, businesses

Guide policy (economic development, science, resource management)

Underpin novel business models and collective value propositions for place-based strategies and goals

Inform regulatory implementation / reform: planning, consenting, research funding criteria

Socialise adoption of nature-related disclosures and derisk business from related demands

Support Māori -led economy

Place-based development platforms

- Explored exemplars of community-led BE development to identify diverse potential BE assets and development platforms
- Worked with community organisations diverse agencies to action elements, deepen linkages, foster place-based development
- Funded and supported independent cluster/catalyser aiming to accelerate a BE via innovation, creating networks, forging domestic and international partnerships, and smoothing commercialisation pipelines



Recommendations to government

- Adopt BE principles to guide national, sectoral, regional economic development strategies
- Embed BE principles in economic development, research, and resource management policy and decision making
- Support Māori blue economy capability and initiatives and align all BE policy with Māori aspirations and institutions.
- Prioritise place-based economic development
- Fund a specialist and independent BE development organisation(s) e.g. Moananui.