

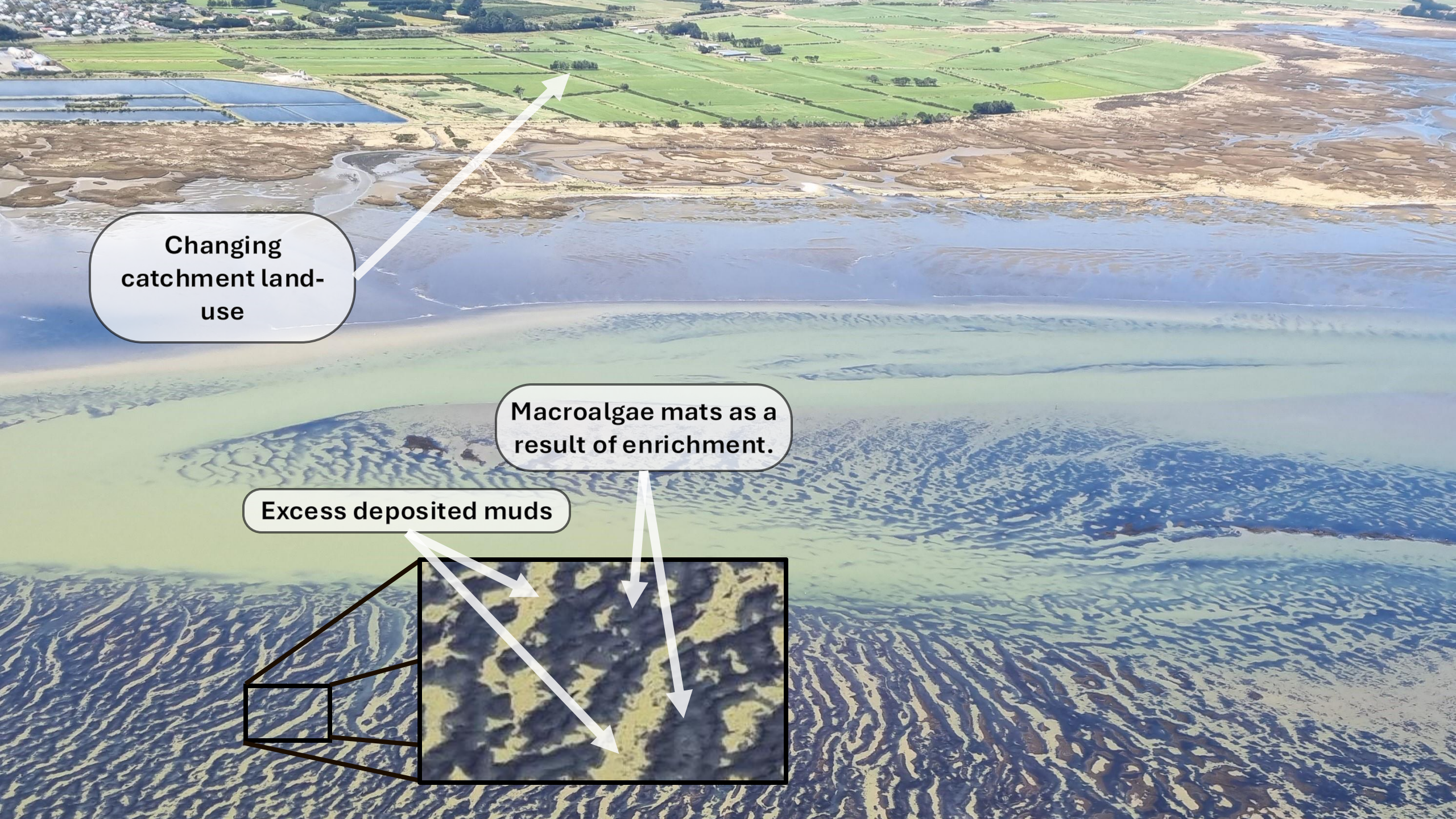
Looking back to inform the future

Hindcasting estuary ecological states using sediment cores, modelled historic nutrient loads, and a Bayesian network for informed management.

Rachel Hale, John Zeldis, Bruce D. Dudley, Arman Haddadchi, David Plew, Ude Shankar, Andrew Swales, Keryn Roberts, Sorrel O'Connell-Milne and Piet Verburg

DOI:
10.3389/fmars.
2024.1374869



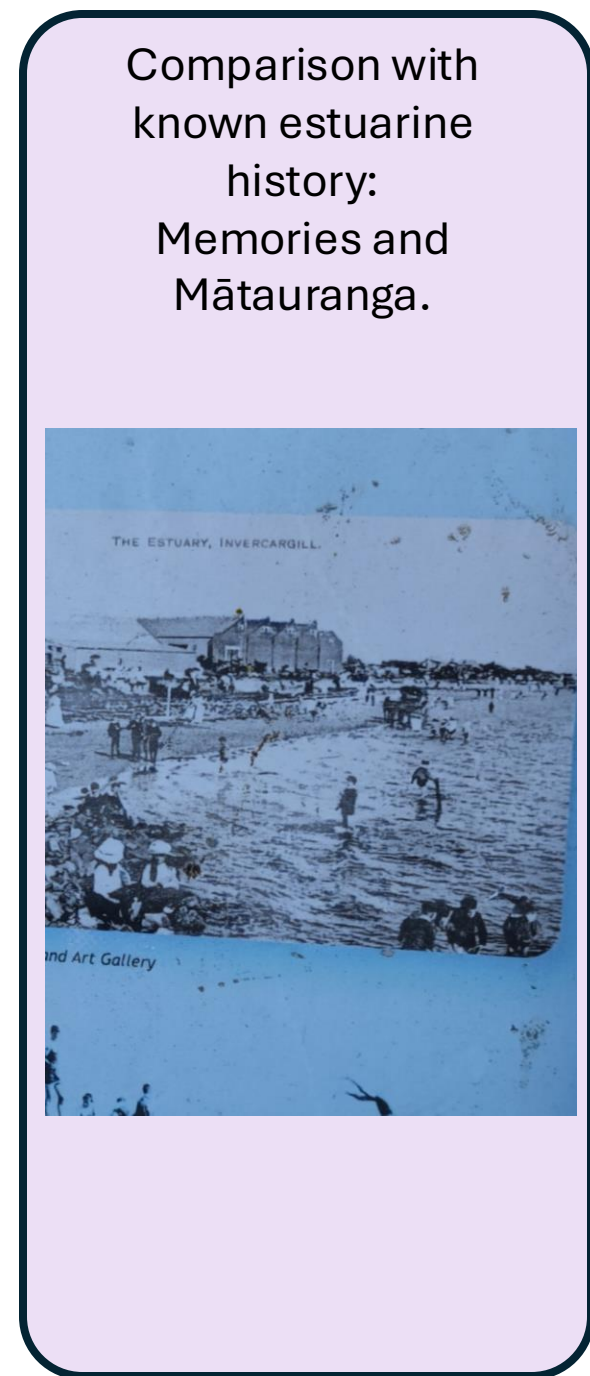
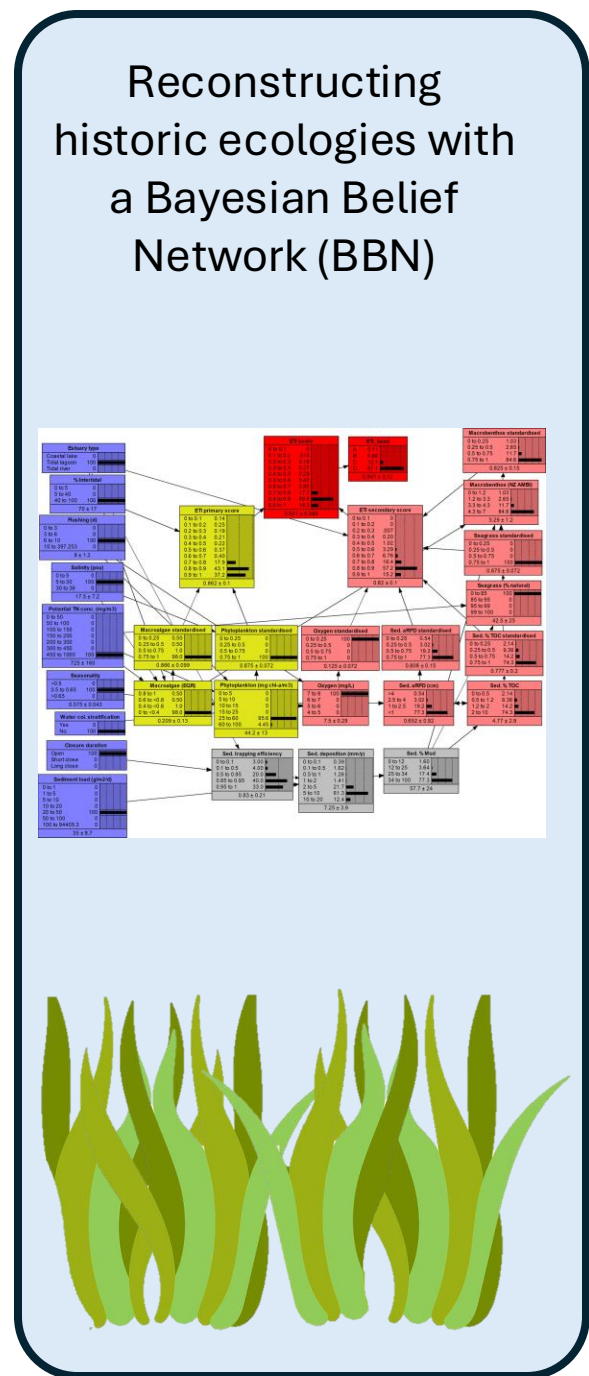
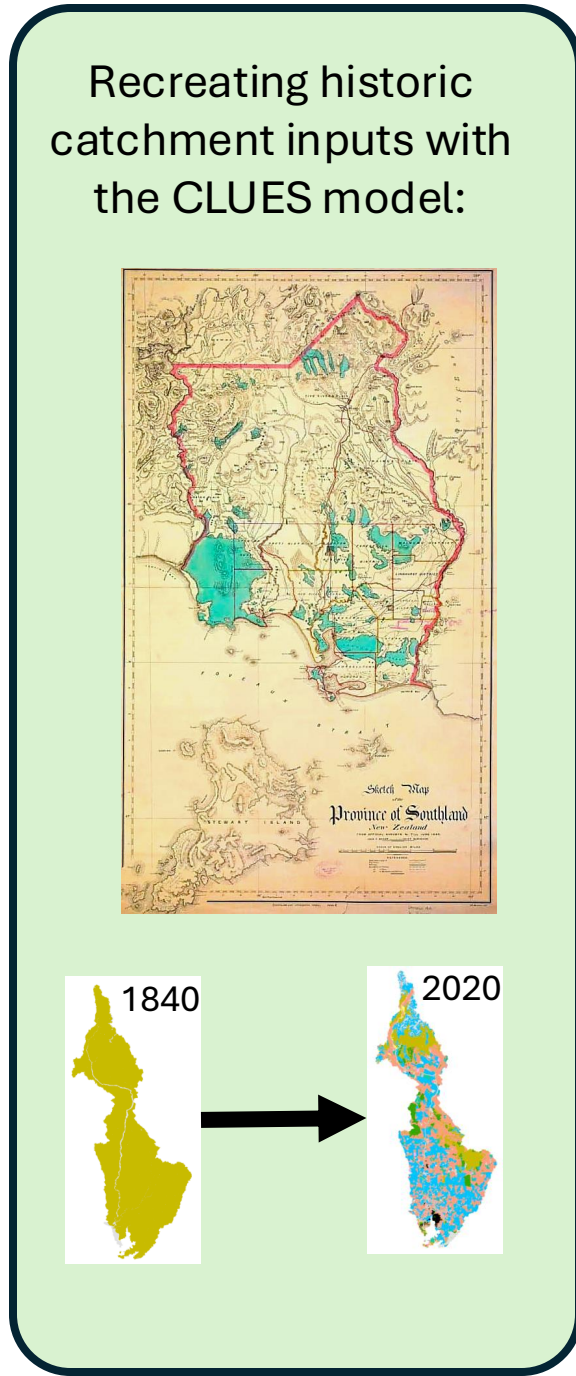
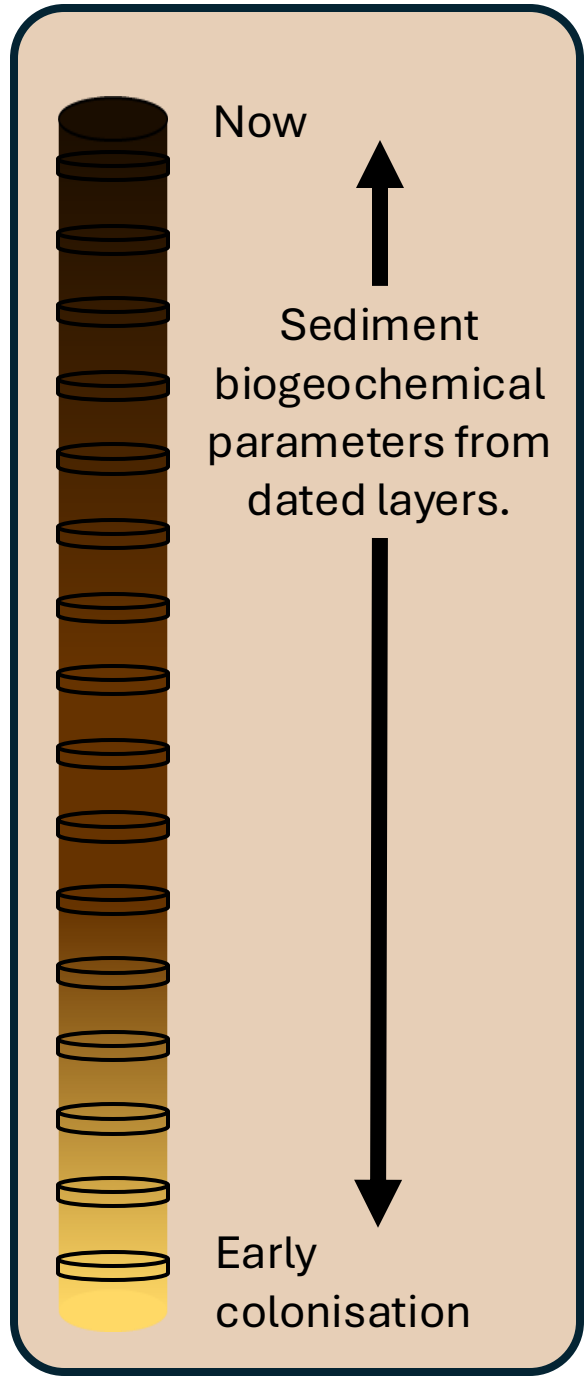


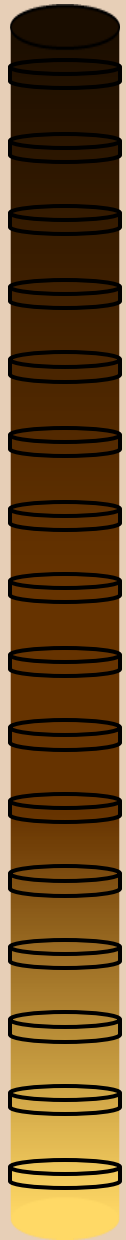
**Changing
catchment land-
use**

**Macroalgae mats as a
result of enrichment.**

Excess deposited muds







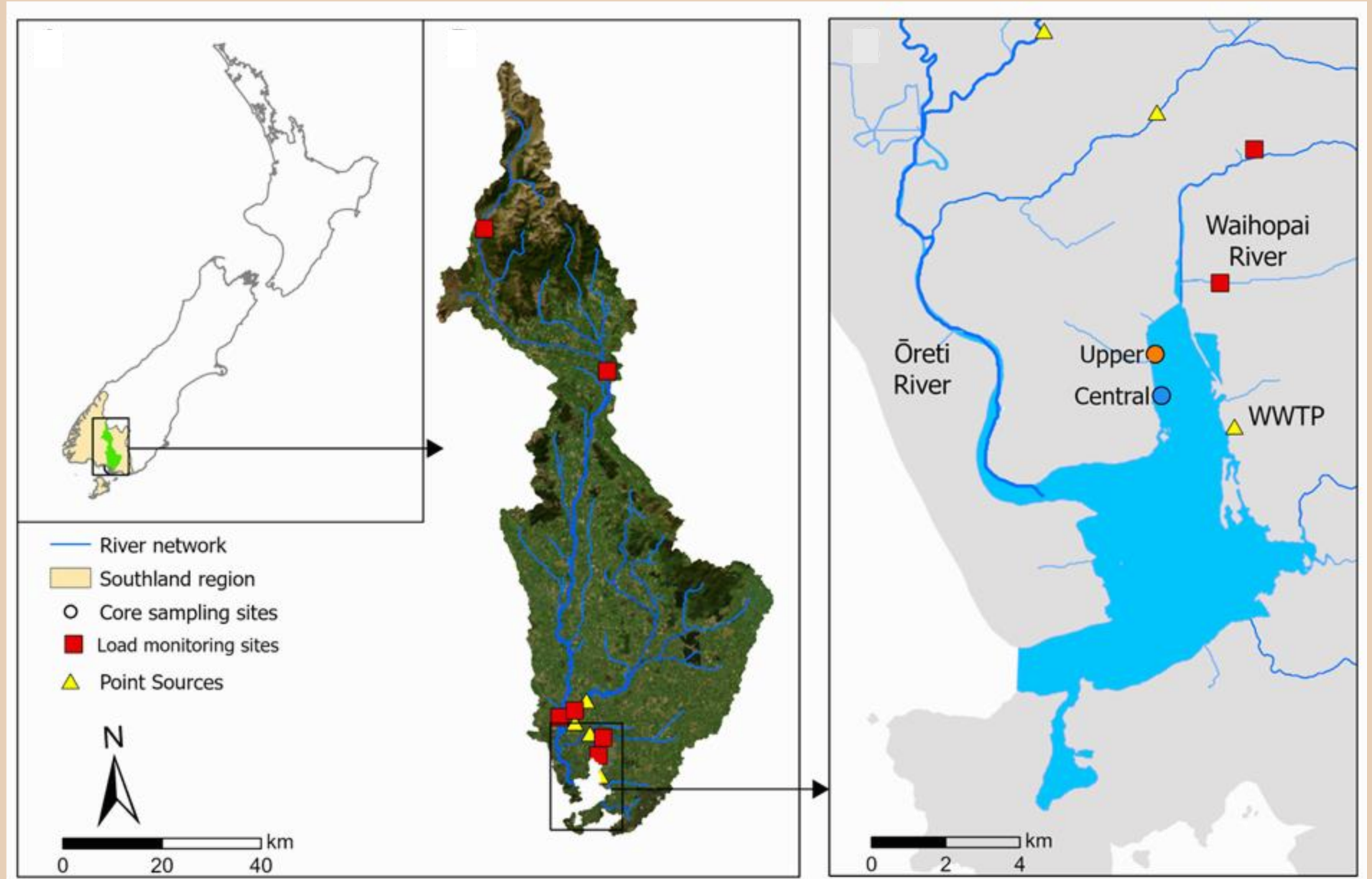
Now

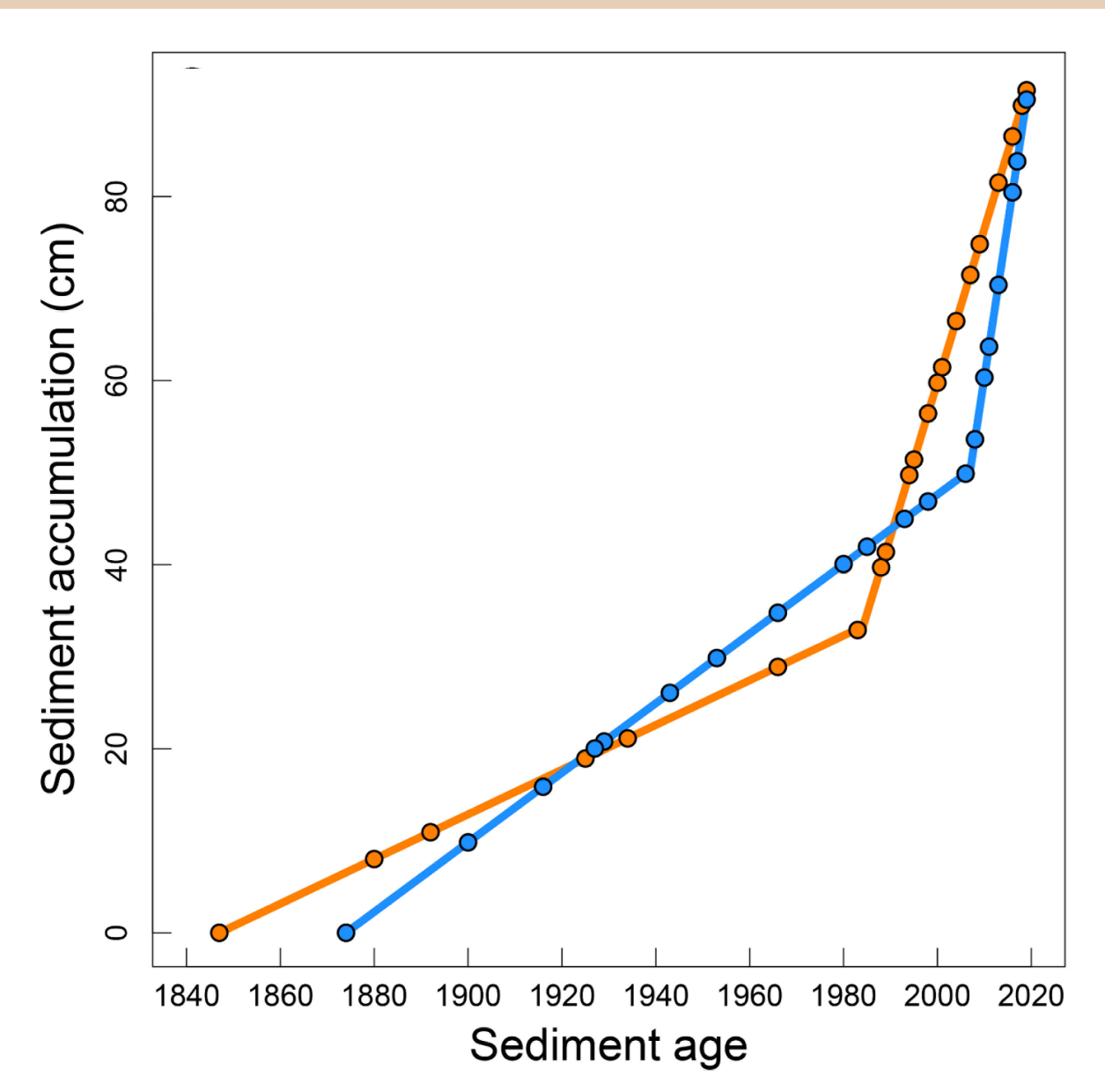
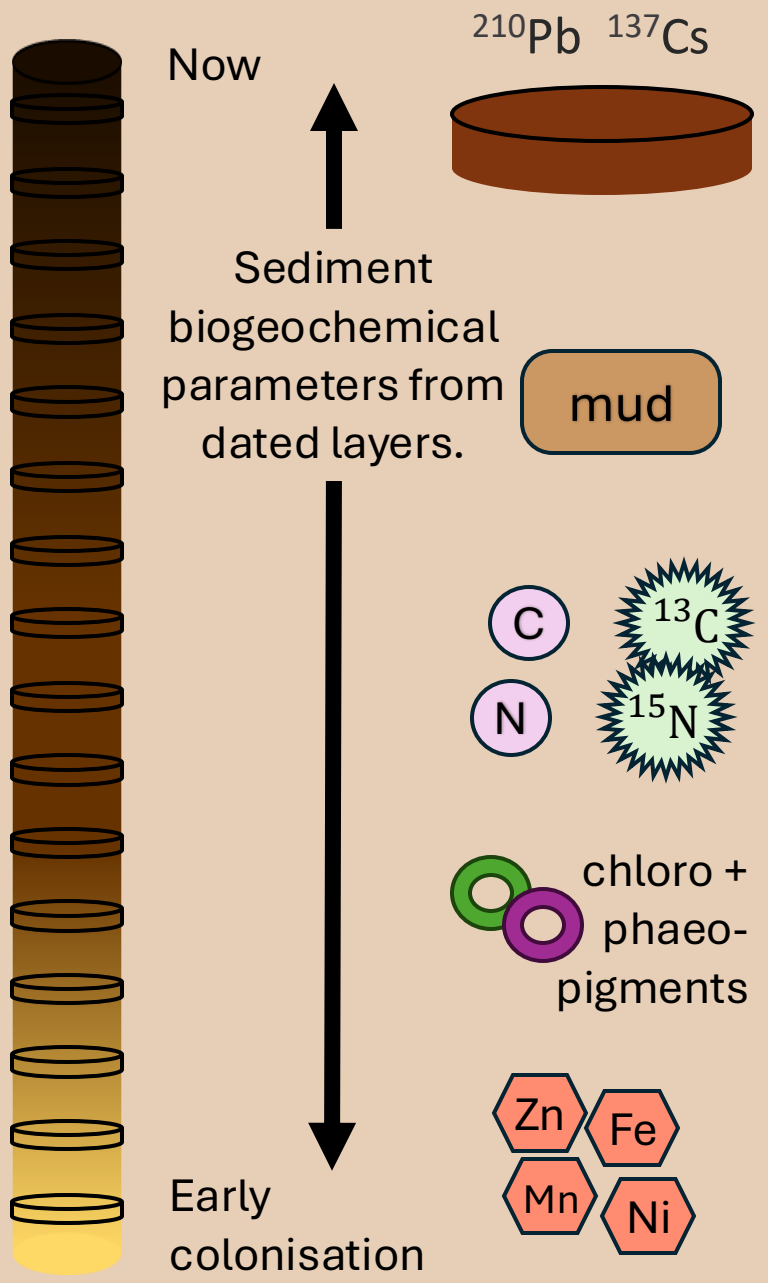


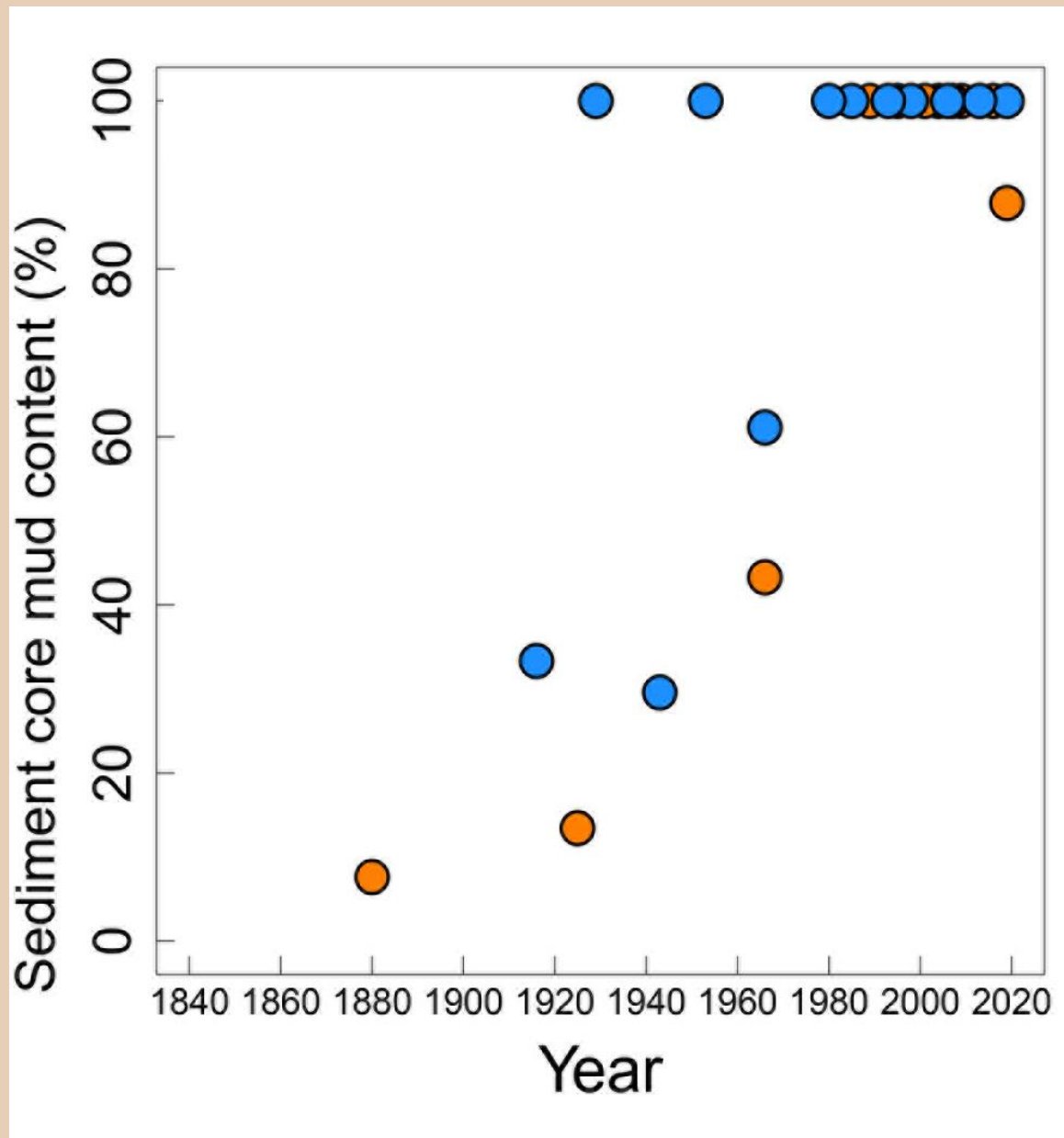
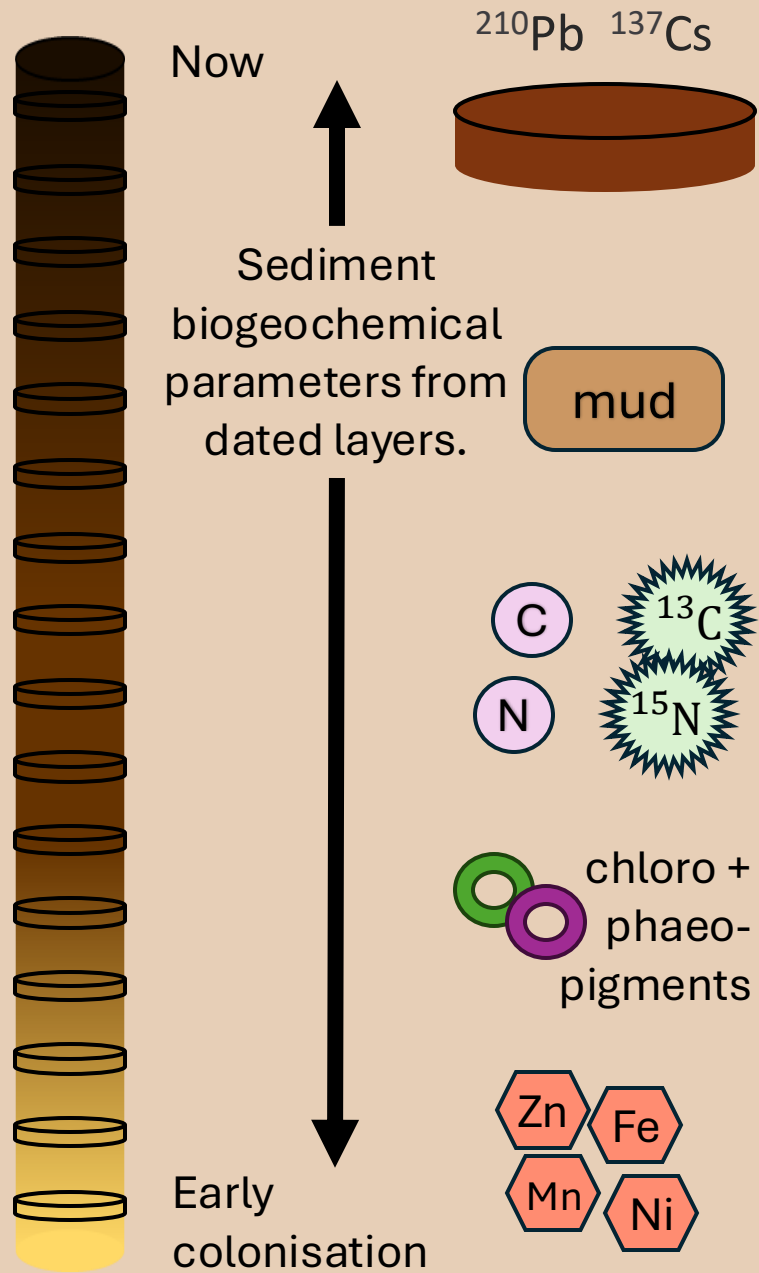
Sediment
biogeochemical
parameters from
dated layers.

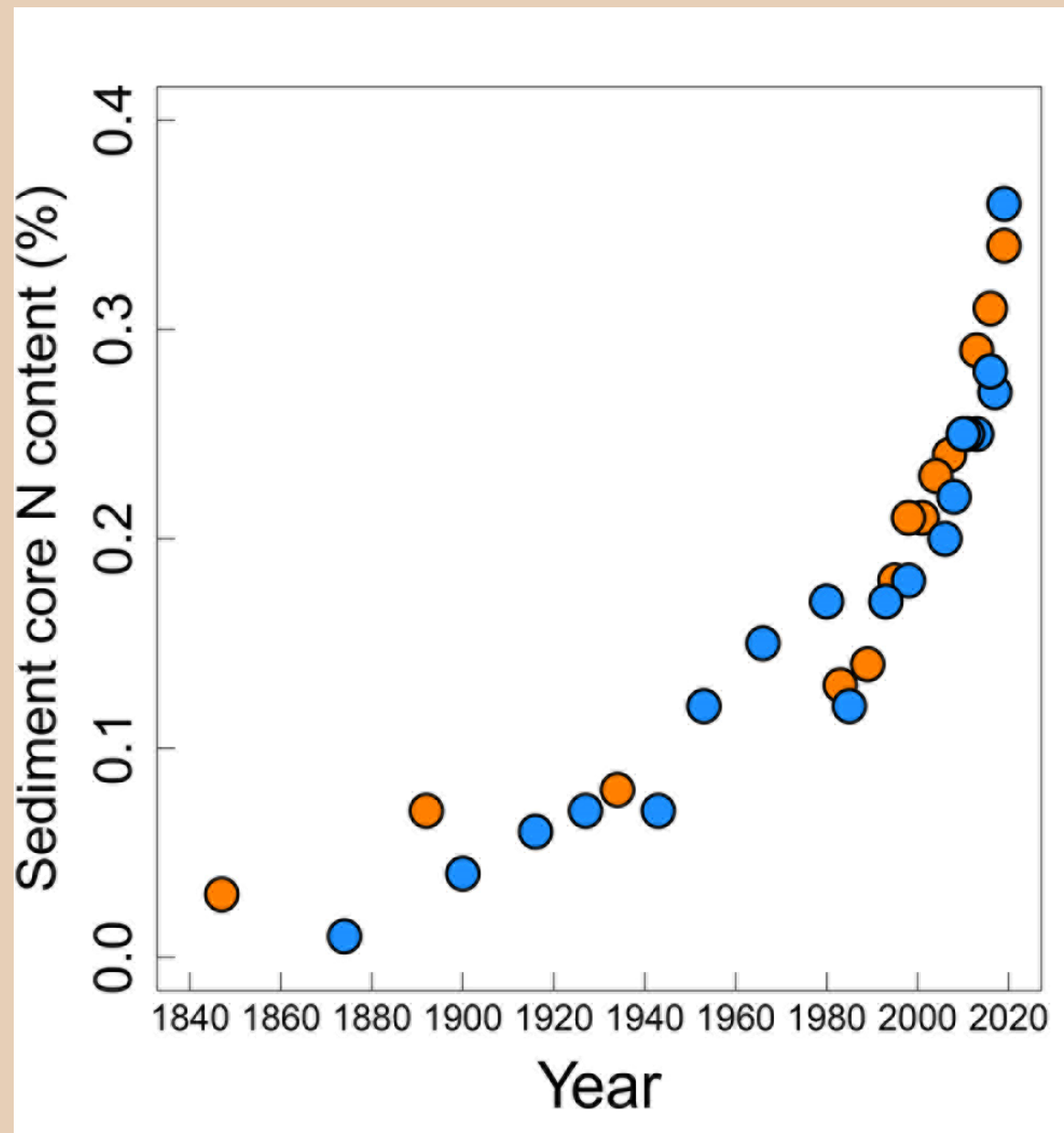
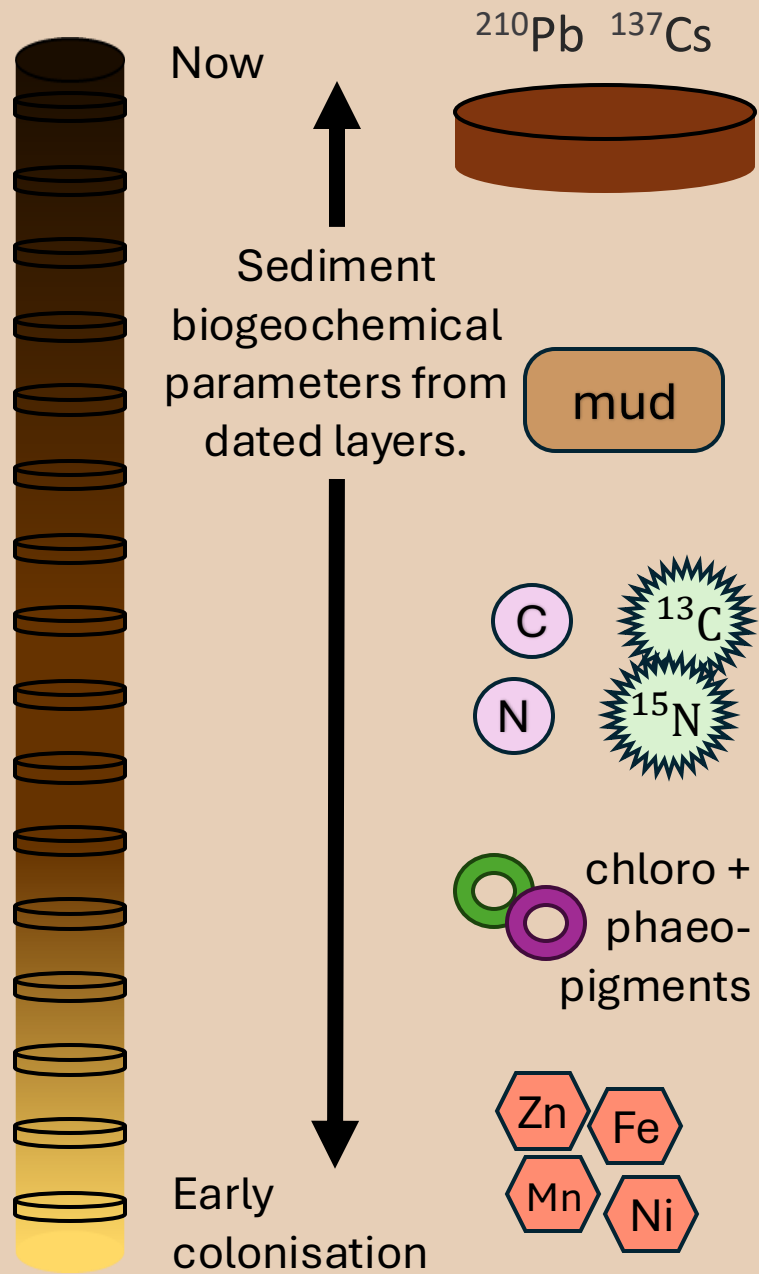


Early
colonisation







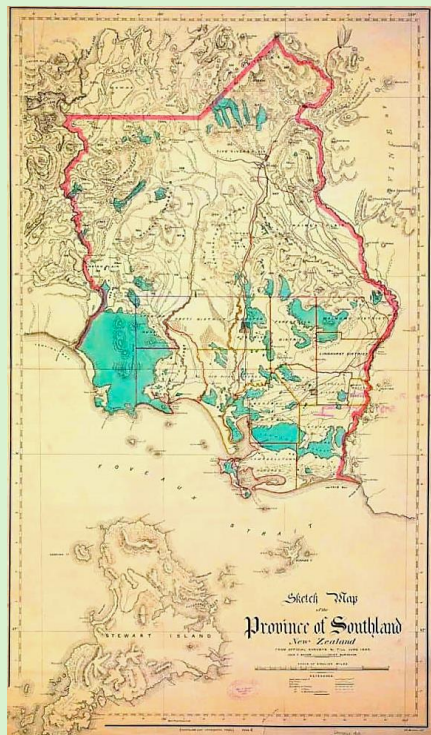


Recreating historic catchment inputs with the CLUES (catchment land-use for environmental sustainability) model:

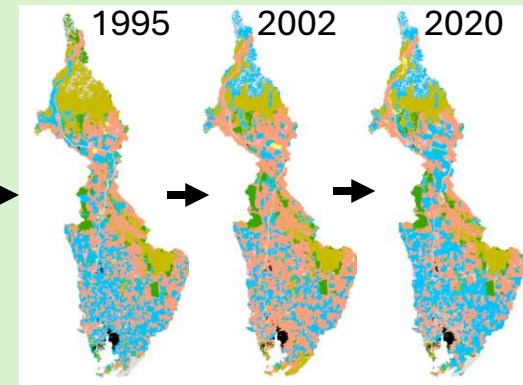
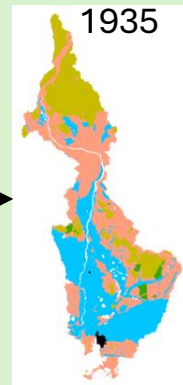
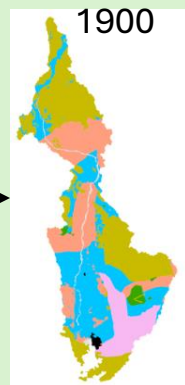
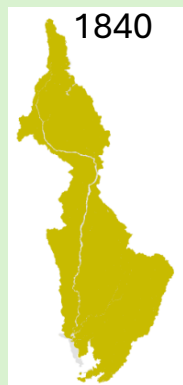
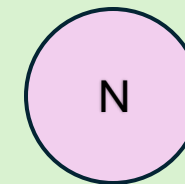
Source and digitise historic maps

Land-use characterisation

Estuarine inputs

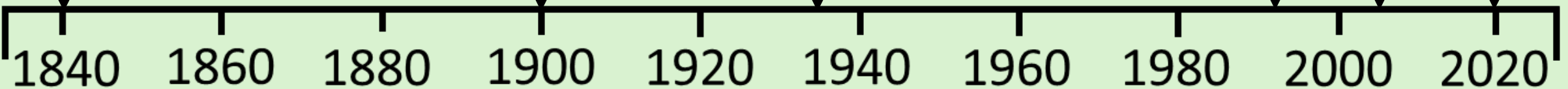
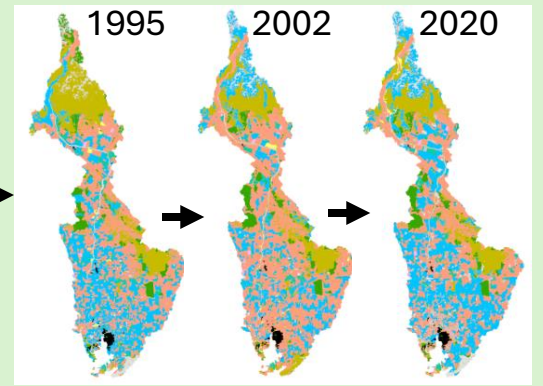
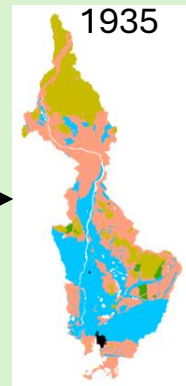
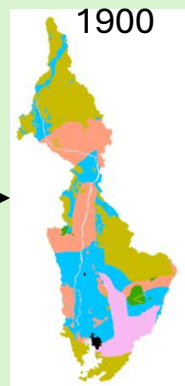
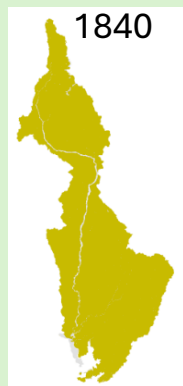
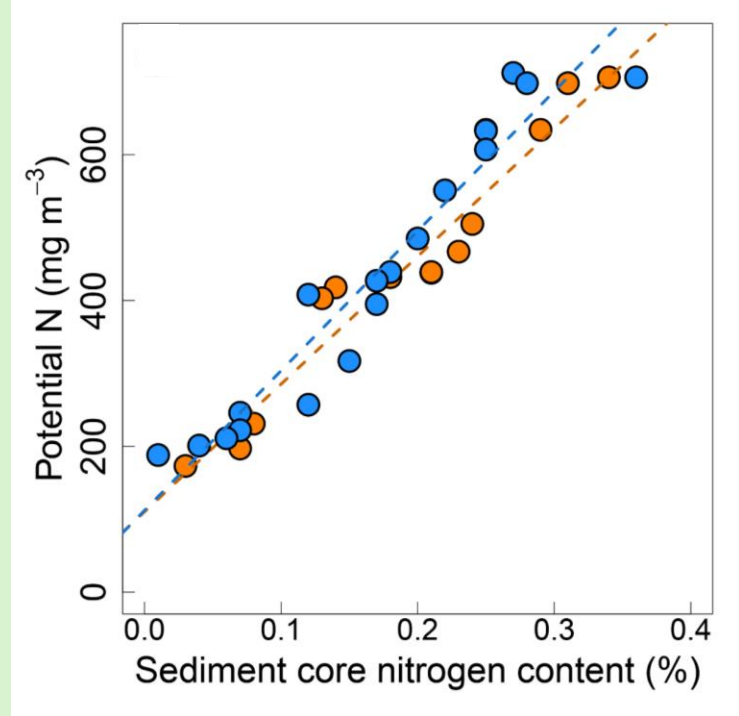
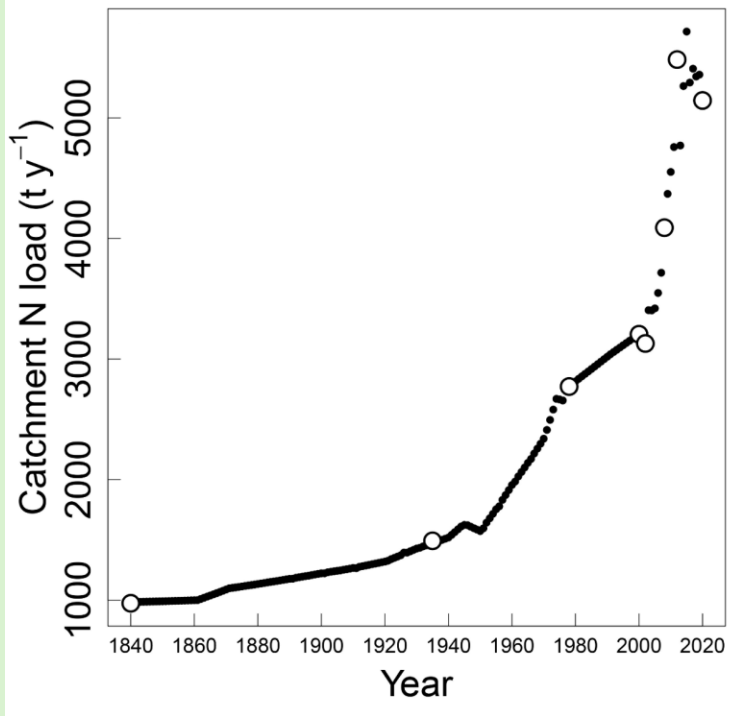


- | | |
|---------------------|-------------------|
| Arable crops | Other animals |
| Dairy | Plantation forest |
| Deer | Sheep and Beef |
| Horticulture | Ungrazed pasture |
| Native forest/Scrub | Urban |

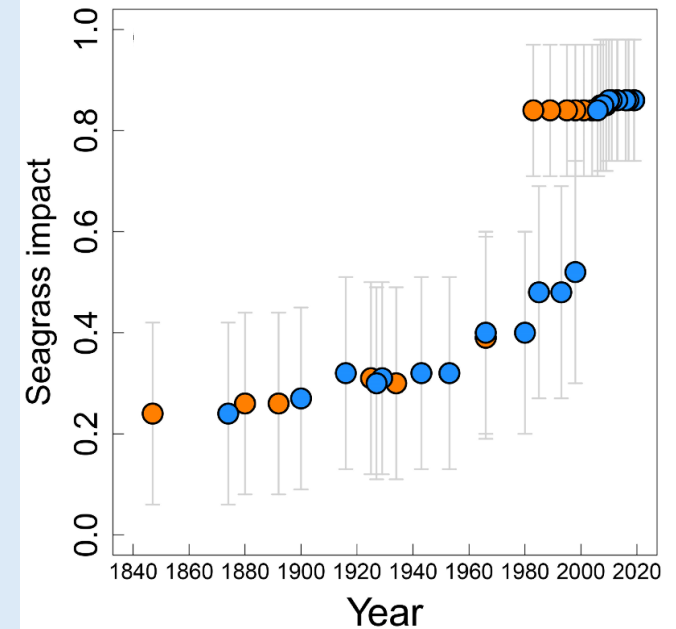
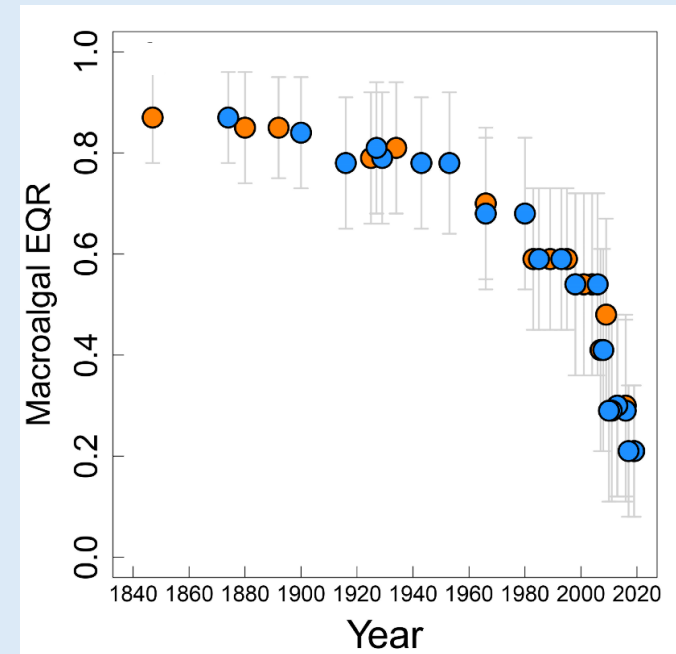
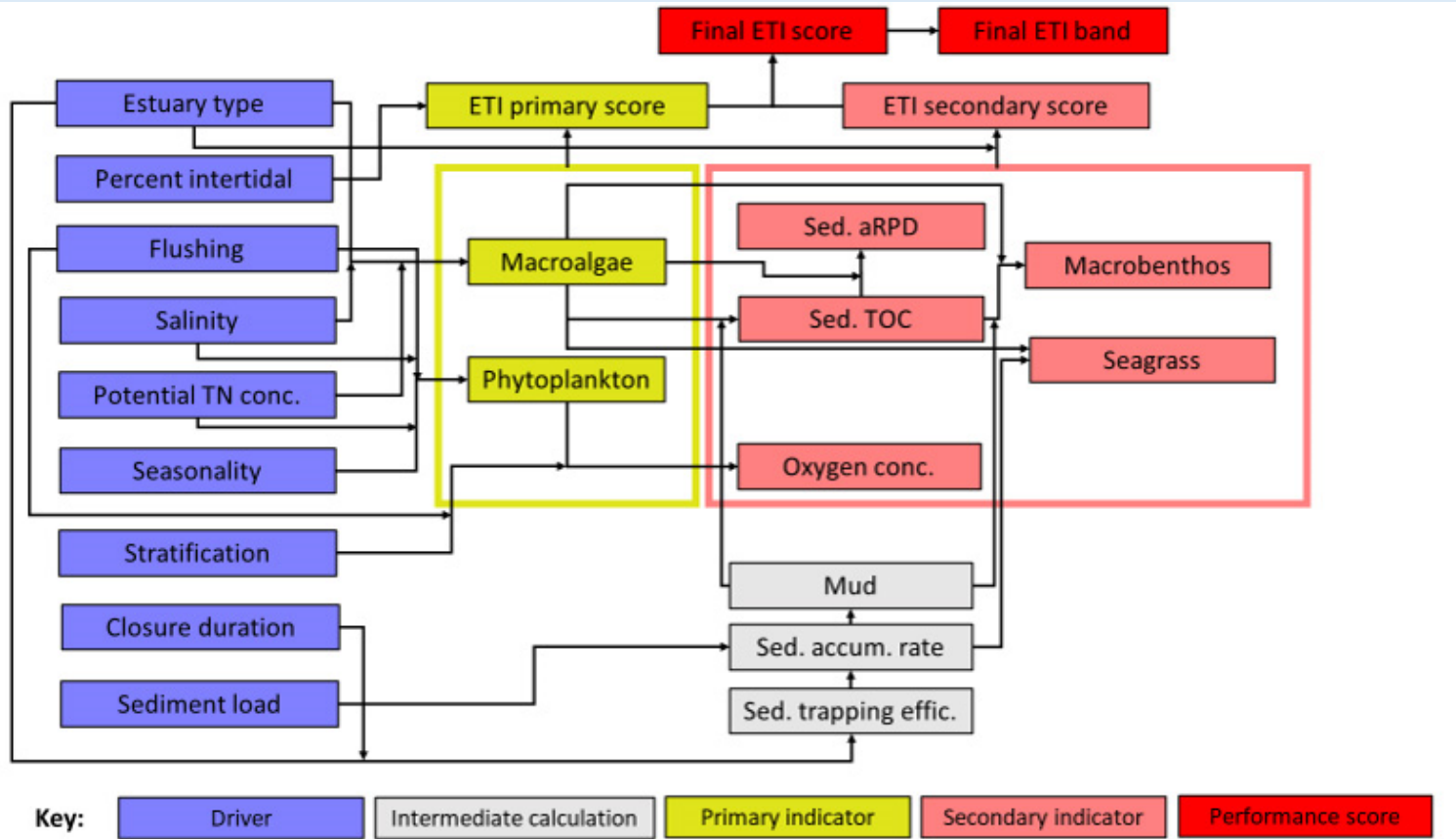


Between map interpolation





Reconstructing historic ecologies with a Bayesian Belief Network



Comparison with known estuarine history: Memories and Mātauranga.



Swimming at Pleasure Bay

Pleasure Bay becomes rubbish dump

Rapid population growth



Rapid dairy expansion

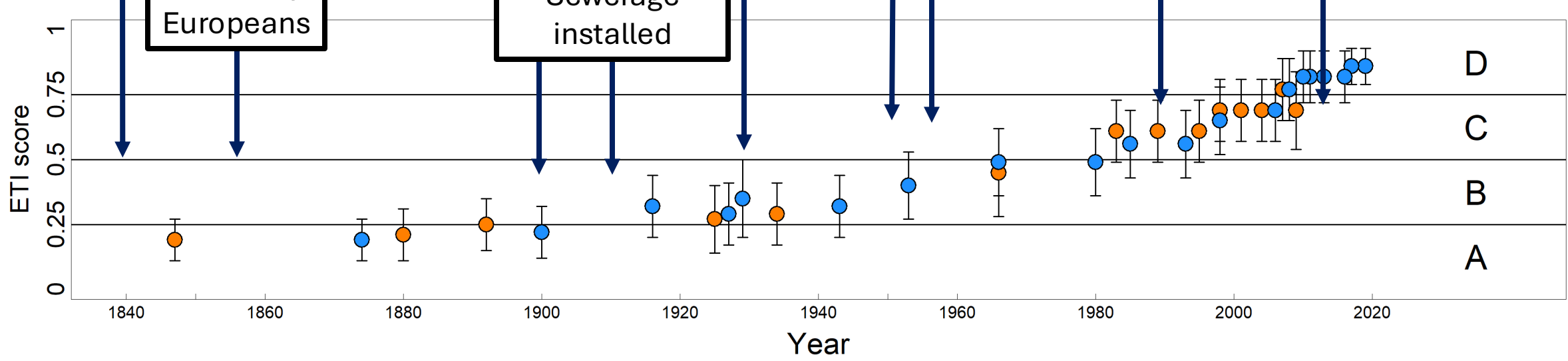
Estuary no longer provides cultural values or suitable for mahinga kai

Te Tiriti o Waitangi

Settled by Europeans

Invercargill declared a city

Sewerage installed



Looking back to inform the future

Hindcasting estuary ecological states using sediment cores, modelled historic nutrient loads, and a Bayesian network for informed management.

Rachel Hale, John Zeldis, Bruce D. Dudley, Arman Haddadchi, David Plew, Ude Shankar, Andrew Swales, Keryn Roberts, Sorrel O'Connell-Milne and Piet Verburg

DOI:
10.3389/fmars.
2024.1374869

