



INTERNATIONAL PACIFIC



HALIBUT COMMISSION

Movements of Pacific halibut
(Hippoglossus stenolepis)
***in the Bering Sea and Aleutian Islands:
evidence of variance in relative connectivity
and regional spawning dynamics***

Tim Loher

PISCES 2019: W2

Why is dispersal important?

Studies designed to look at two primary aspects of spawning stock function:



Why is dispersal important?

Studies designed to look at two primary aspects of spawning stock function:

- Spatial population structure (here, interannual dispersal)
 - bearing upon model structures and Spawning Biomass definitions



Why is dispersal important?

Studies designed to look at two primary aspects of spawning stock function:

- Spatial population structure (here, interannual dispersal)
 - bearing upon model structures and Spawning Biomass definitions
- Seasonal migratory behavior
 - affects how stock interacts with fishery components
 - affects ecological processes such as recruitment potential



Why is dispersal important?

Studies designed to look at two primary aspects of spawning stock function:

- Spatial population structure (here, interannual dispersal)
 - bearing upon model structures and Spawning Biomass definitions
- Seasonal migratory behavior
 - affects how stock interacts with fishery components
 - affects ecological processes such as recruitment potential

→ Noting that these concepts are intrinsically linked



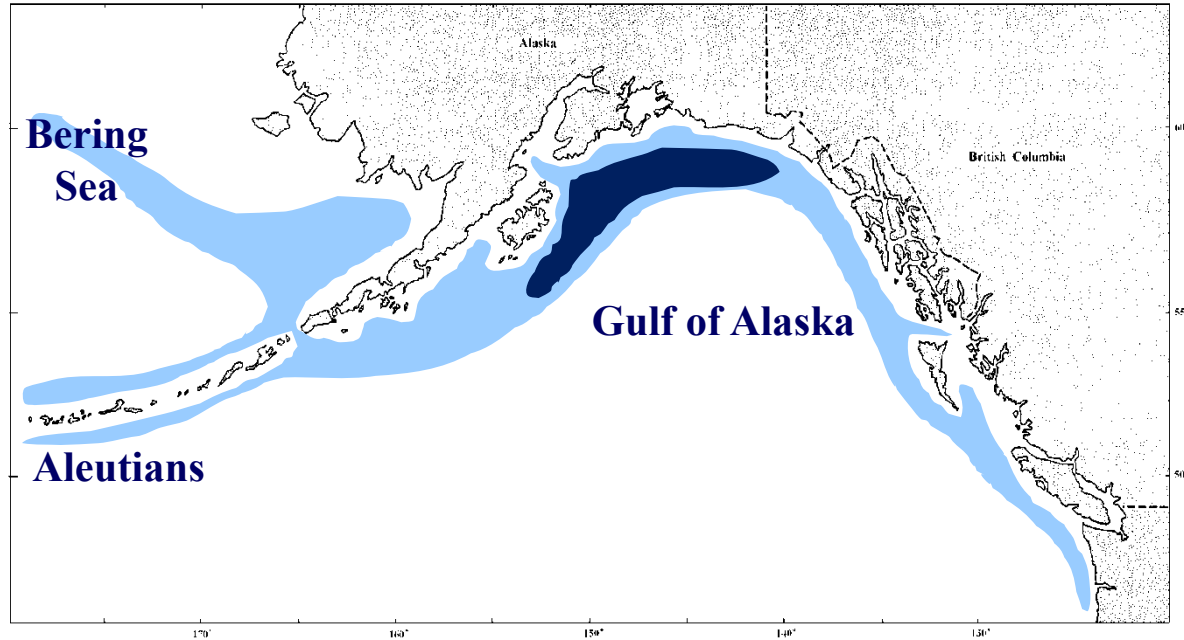
Why is dispersal important?

Spatial population structure: Basin Theory meets Unit Stock



Why is dispersal important?

Spatial population structure: Basin Theory meets Unit Stock



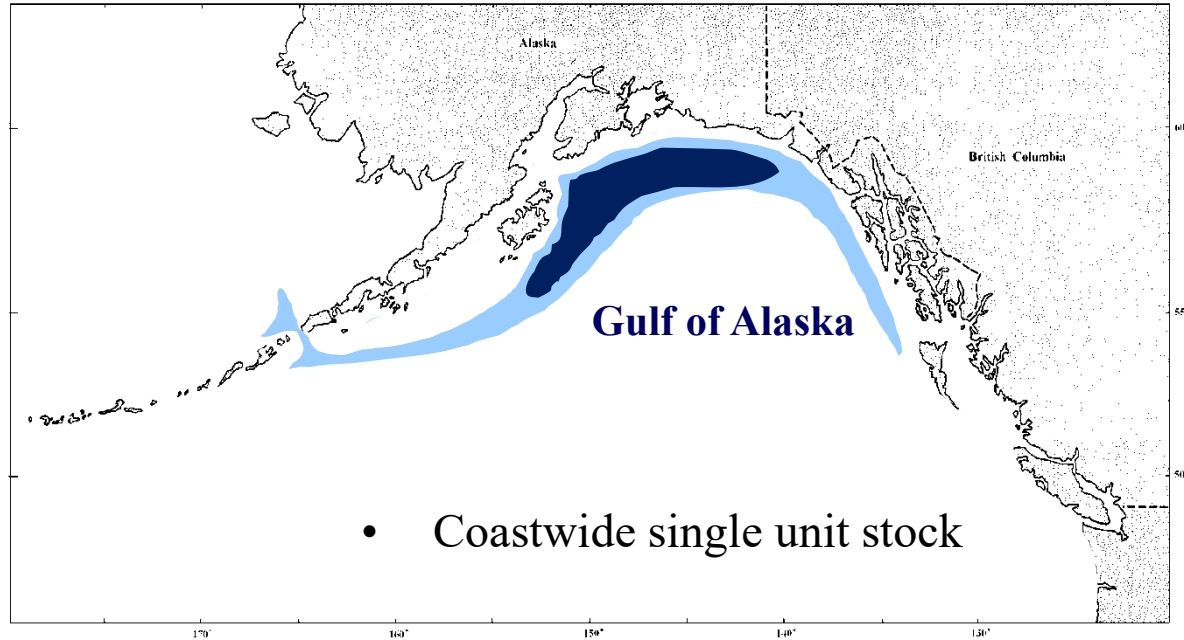
Why is dispersal important?

Spatial population structure: Basin Theory meets Unit Stock



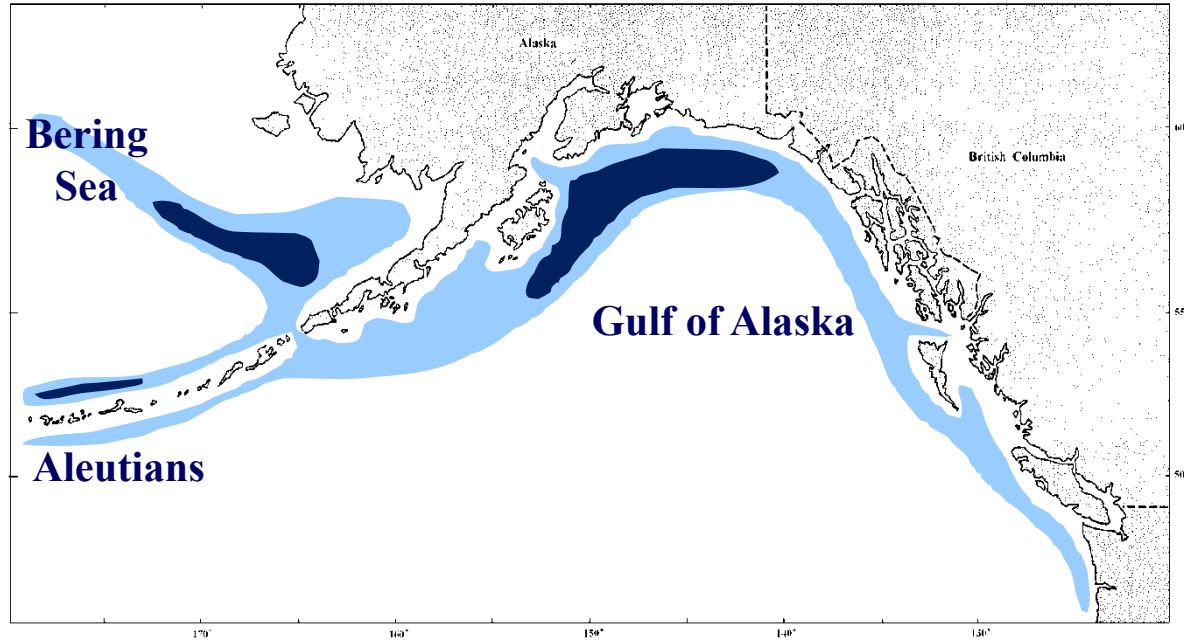
Why is dispersal important?

Spatial population structure: Basin Theory meets Unit Stock



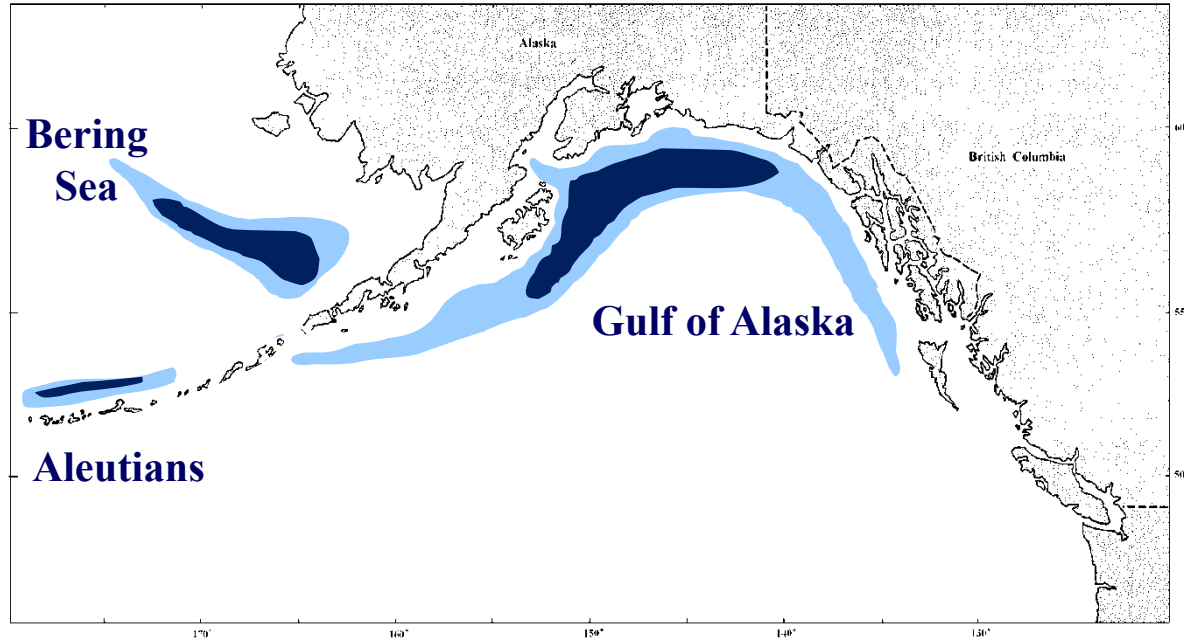
Why is dispersal important?

Spatial population structure: Basin Theory meets Unit Stock



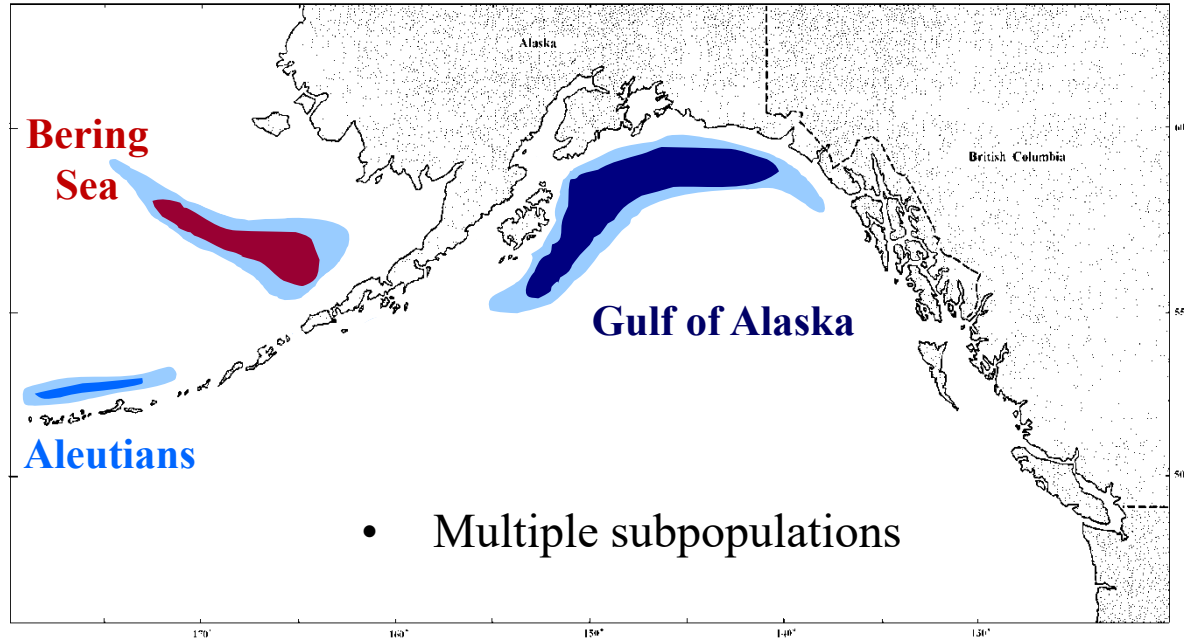
Why is dispersal important?

Spatial population structure: Basin Theory meets Unit Stock



Why is dispersal important?

Spatial population structure: Basin Theory meets Unit Stock



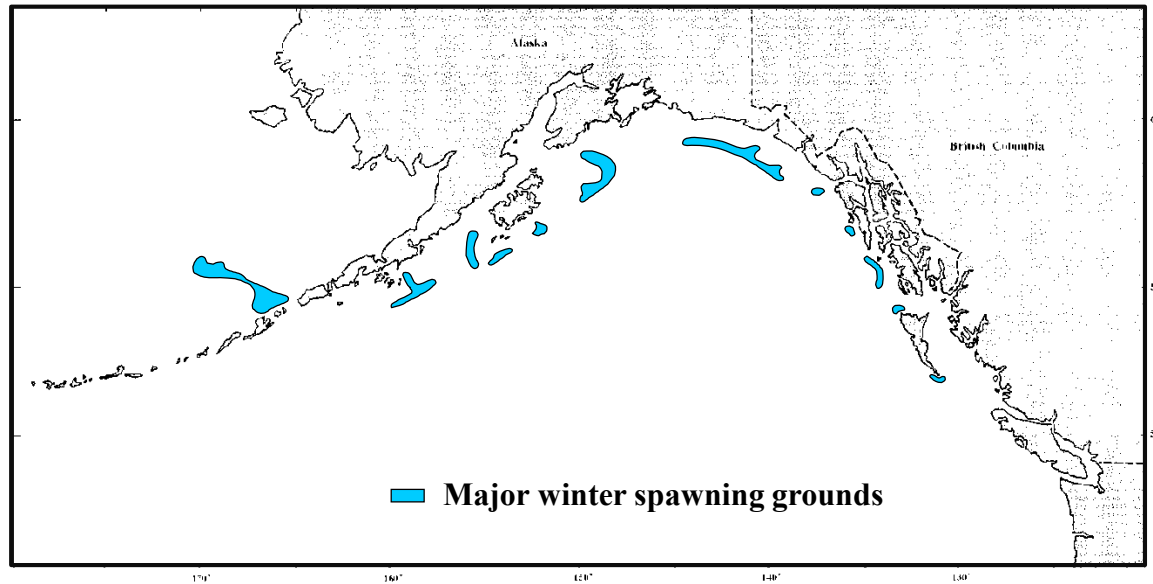
Why is dispersal important?

Seasonal migratory behavior



Why is dispersal important?

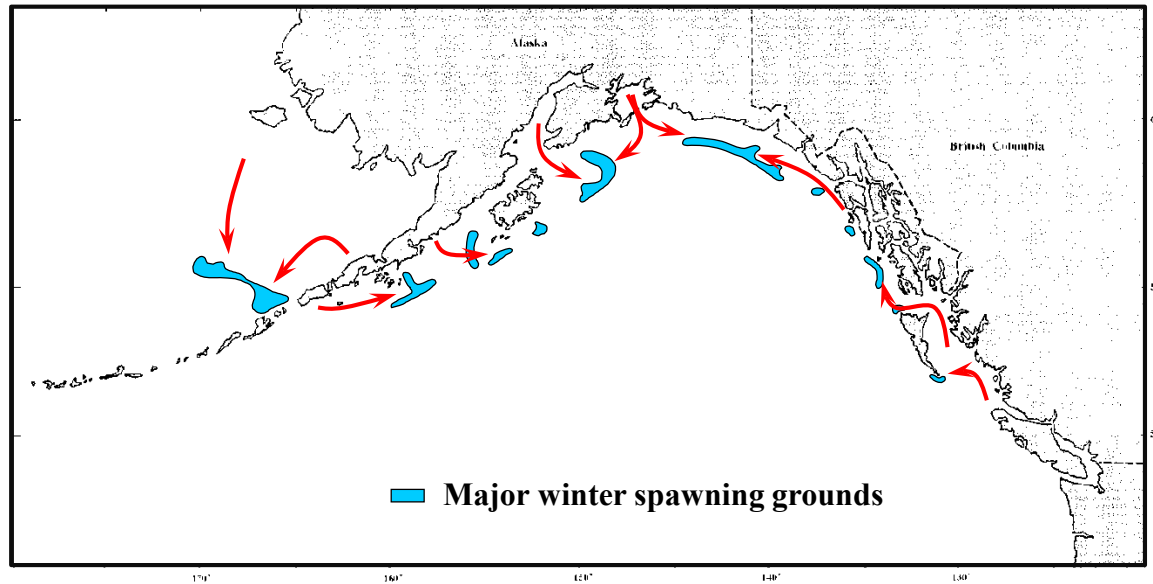
Seasonal migratory behavior



Why is dispersal important?

Seasonal migratory behavior

- Timing is everything



Why is dispersal important?

Seasonal migration: timing is everything

- Fishery interaction: the case of Northern Cod



Why is dispersal important?

Seasonal migration: timing is everything

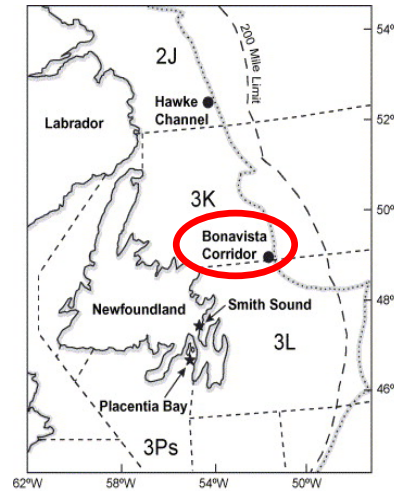
- Fishery interaction: the case of Northern Cod



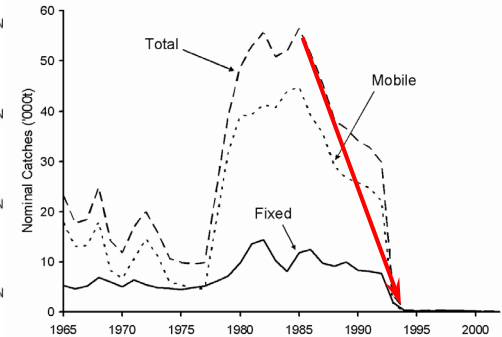
Why is dispersal important?

Seasonal migration: timing is everything

- Fishery interaction: the case of Northern Cod



Sherwood and Rose, *Est Coast Shelf Sci* 63:537



Why is dispersal important?

Seasonal migration: timing is everything

- Ecological considerations: regional and temporal variance

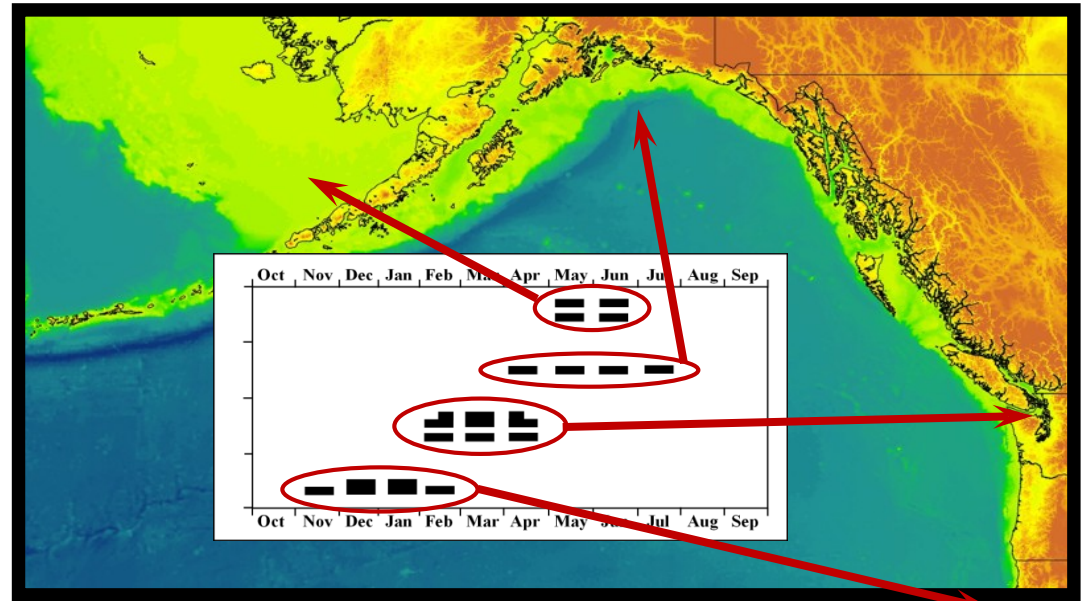


Why is dispersal important?

Seasonal migration: timing is everything

- Ecological considerations: regional and temporal variance

Here, starry flounder (Platichthys stellatus) :



Spawning data compiled by: Castillo (1995), Proc Int Symp N Pac Flatfish AK-SG-95-04:51-72



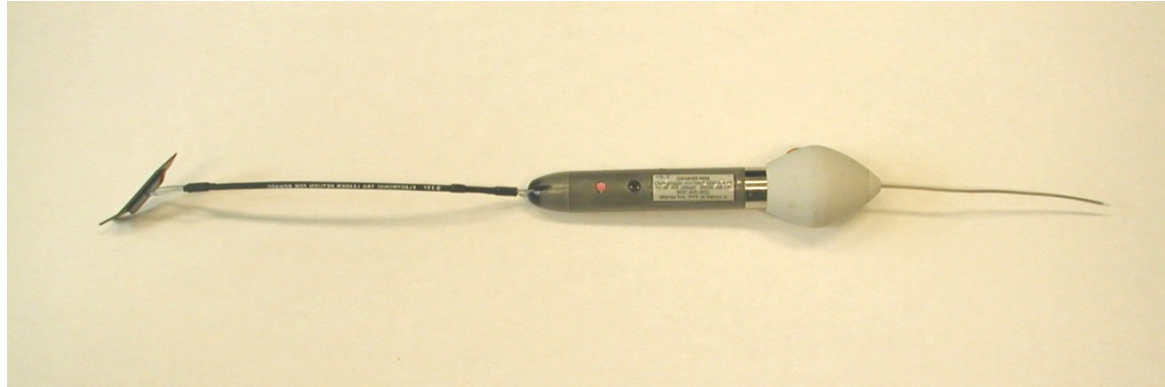
Study elements

Electronic archival tags: mark-report and so much more



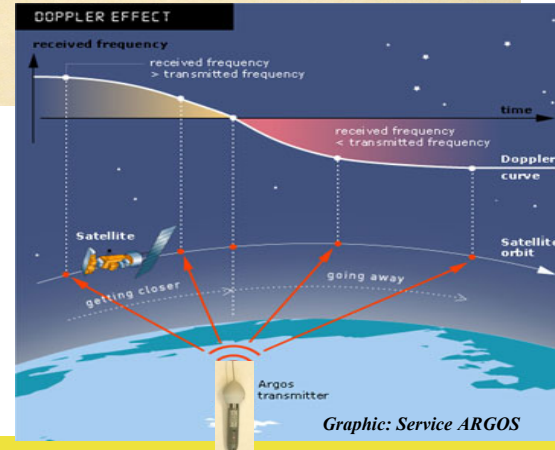
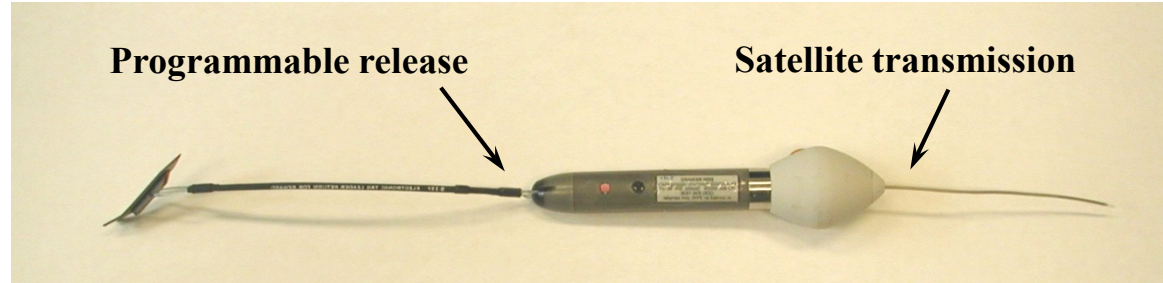
Study elements

Electronic archival tags: mark-report and so much more



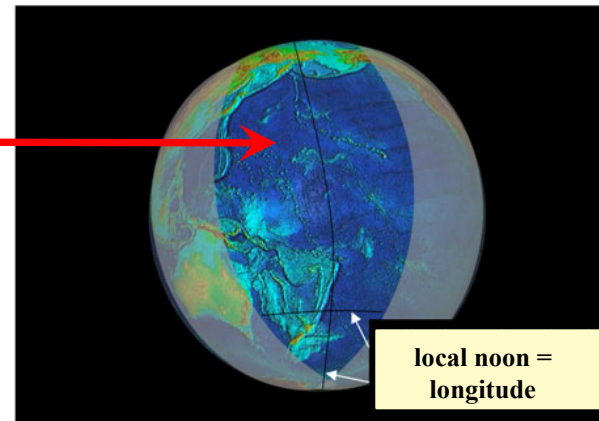
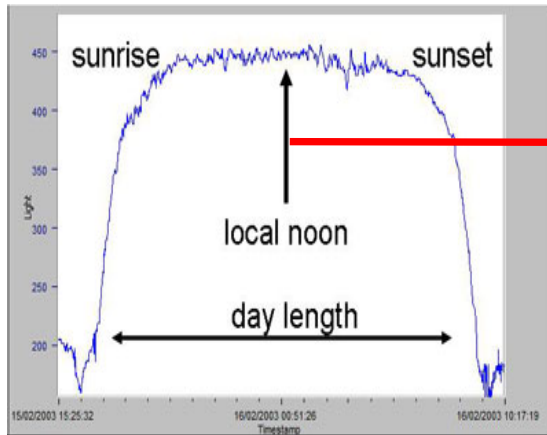
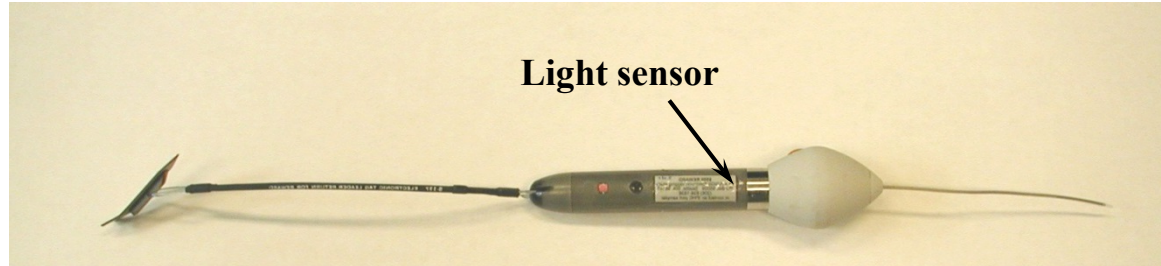
Study elements

Electronic archival tags: *fishery independent* mark-report ...



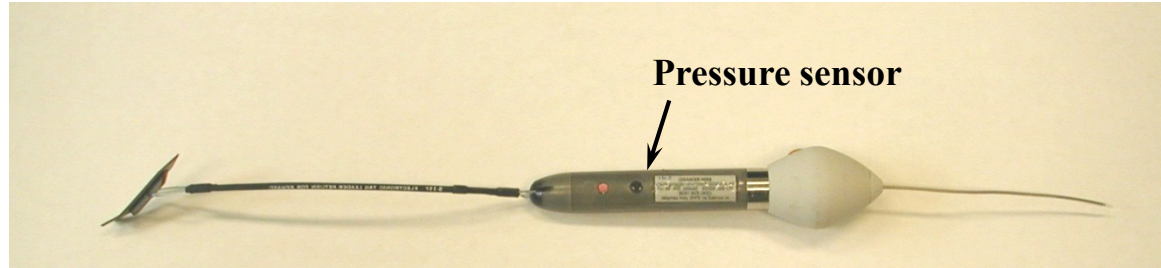
Study elements

Electronic archival tags: mark-report and *at-liberty* positions

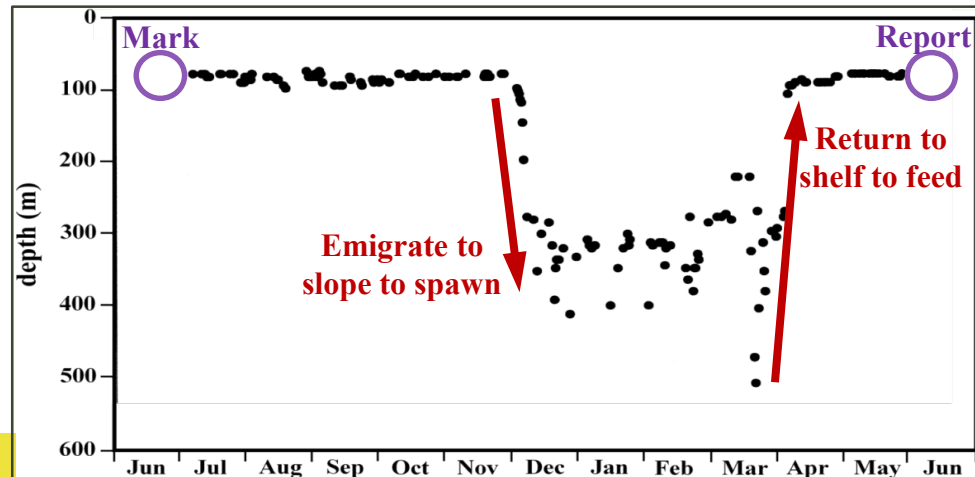


Study elements

Electronic archival tags: mark-report, at-liberty positions, and *behavior*

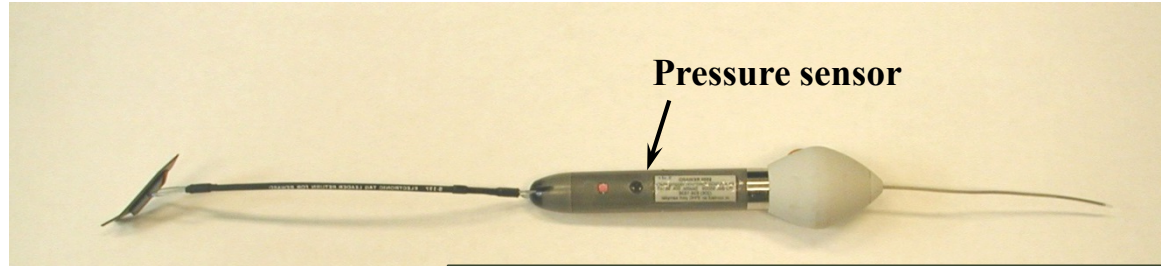


The prototypical spawning migration:

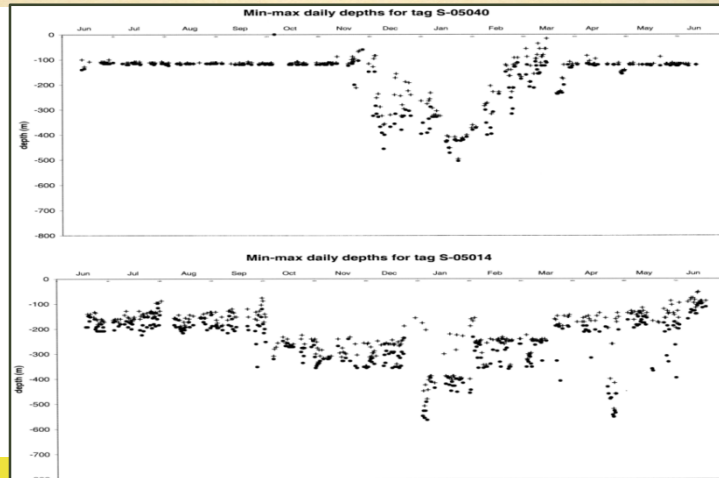


Study elements

Electronic archival tags: mark-report, at-liberty positions, and *behavior*

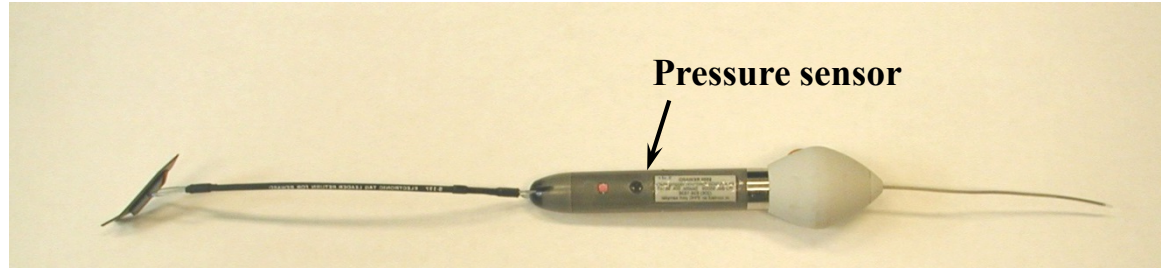


But, different fish do different things:

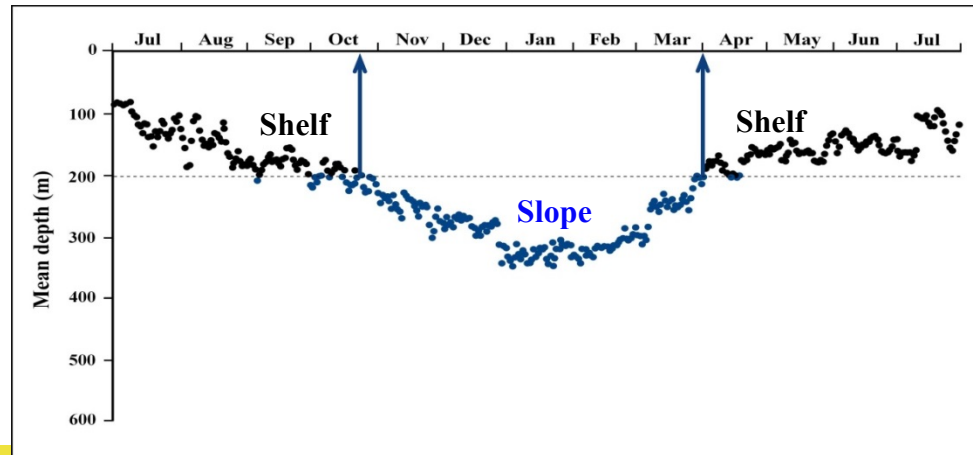


Study elements

Electronic archival tags: mark-report, at-liberty positions, and *behavior*



So, group-averaged data can be used to compare regions and demographics:



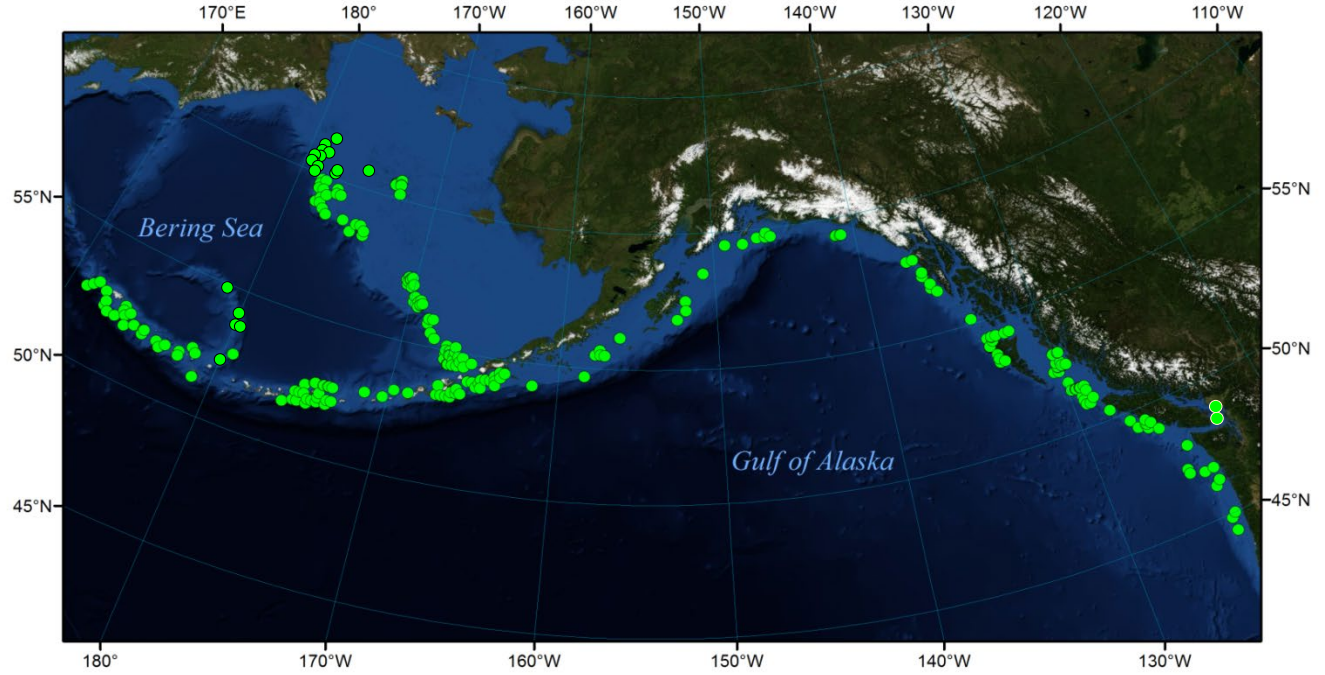
Study elements

We've deployed (458) pop-up archival (PAT tags) since 2002:



Study elements

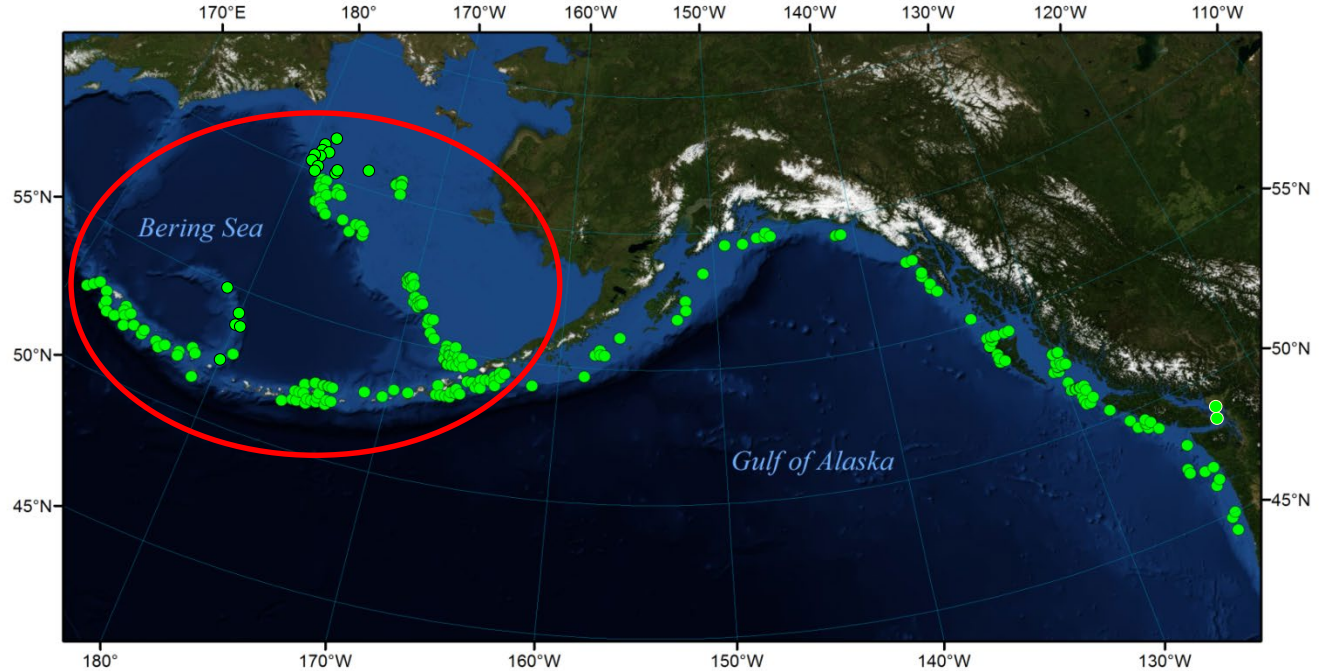
We've deployed (458) pop-up archival (PAT tags) since 2002:



Study elements

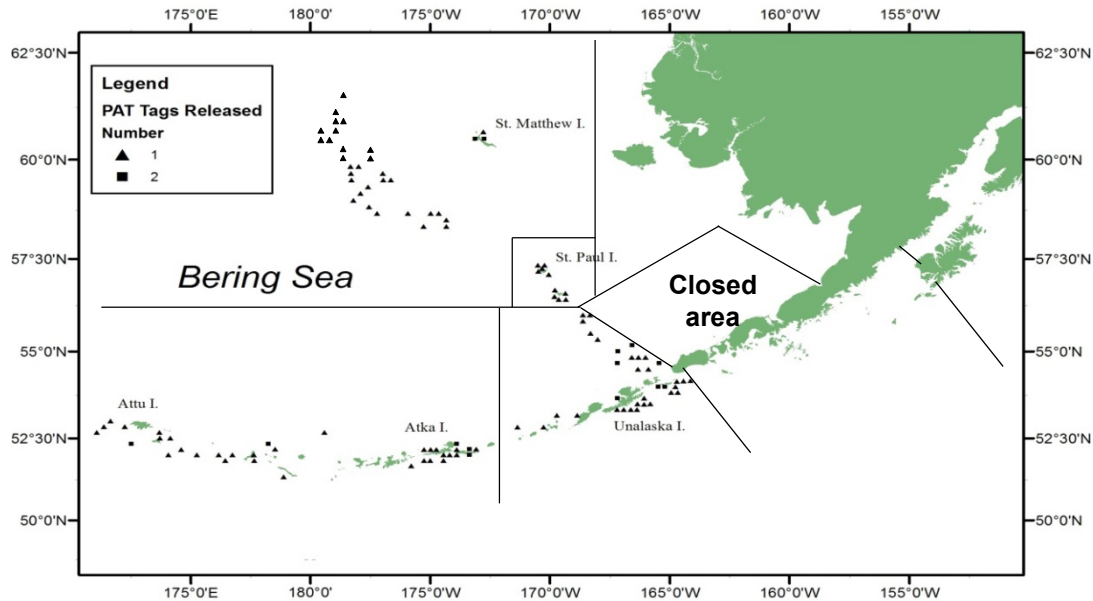
We've deployed (458) pop-up archival (PAT tags) since 2002:

Today's focus will
be **Bering Sea**
deployments



Study elements

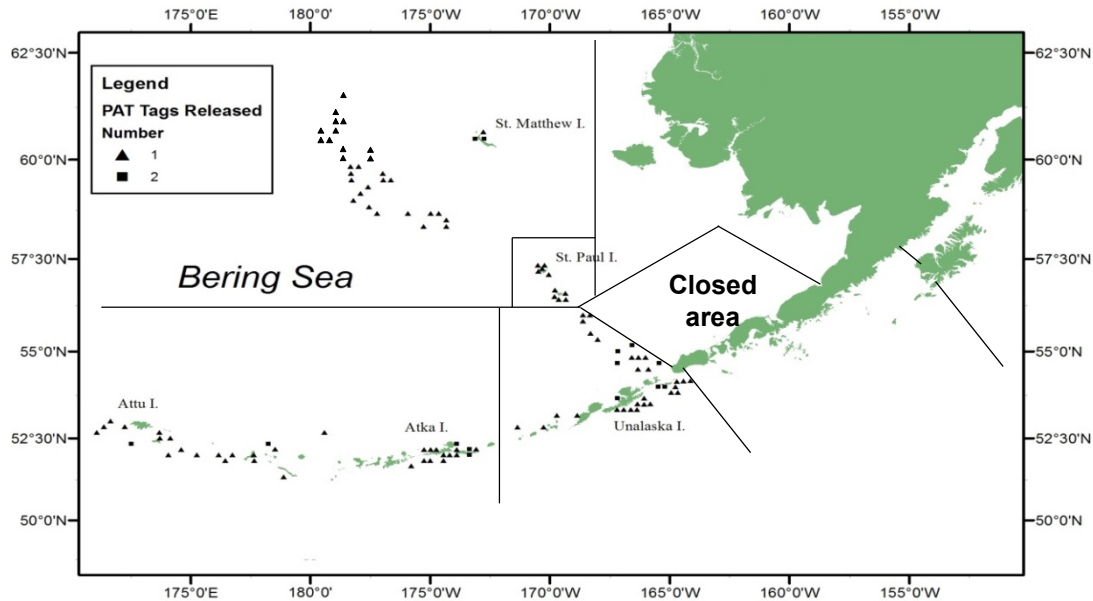
Specifically: (145) tags were deployed in 2008, 2009, and 2016



Study elements

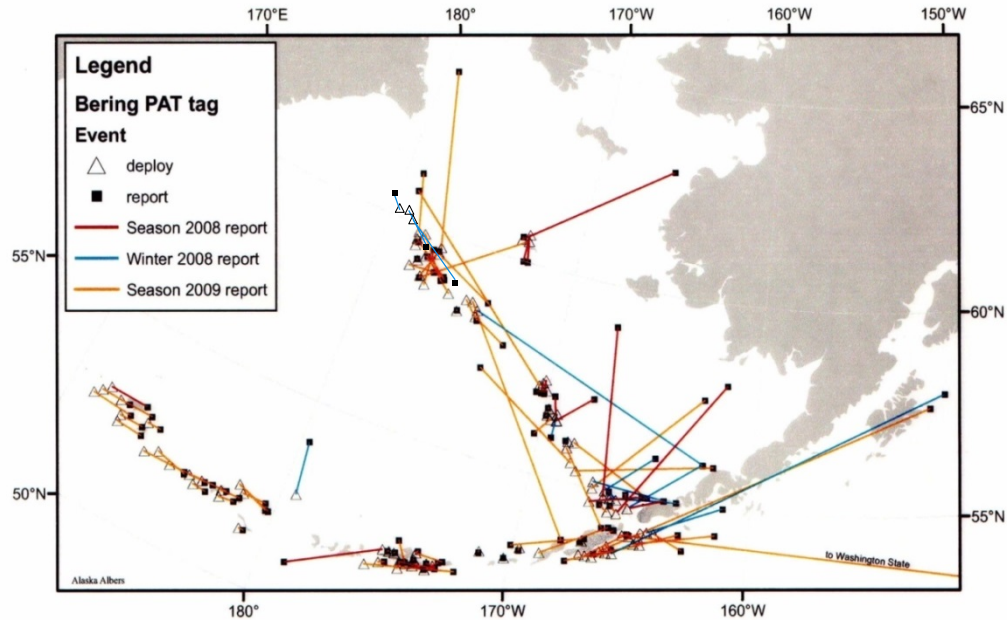
Specifically: (145) tags were deployed in 2008, 2009, and 2016

- Programmed for 365-day reporting, with “premature release detection”



Geographic dispersal: *endpoints*

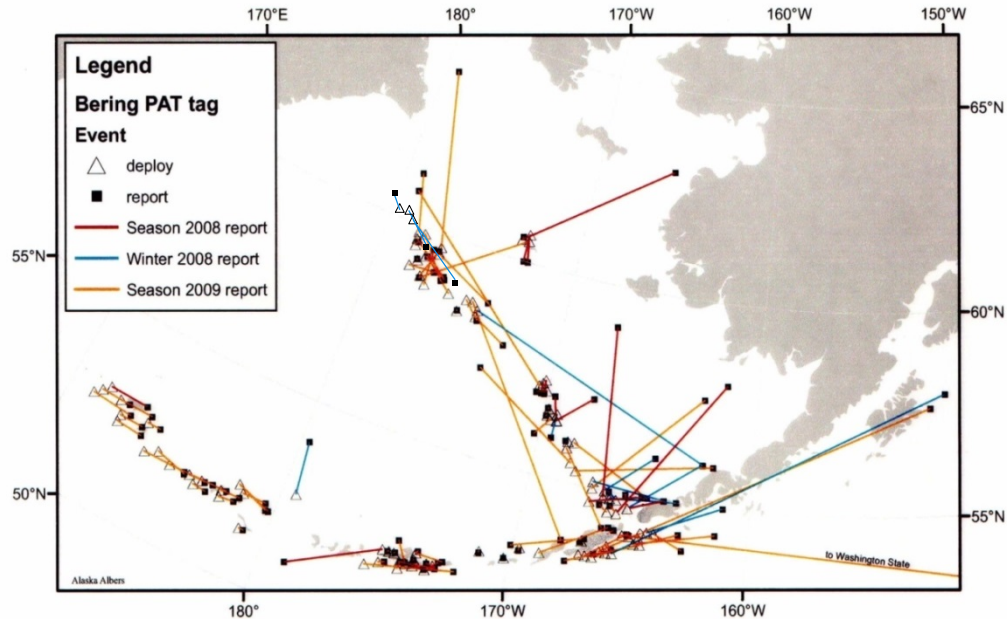
(108) tags generated endpoints: (20) during winter (164-361 day); (71) at 365-days



Geographic dispersal: *endpoints*

(108) tags generated endpoints: (20) during winter (164-361 day); (71) at 365-days

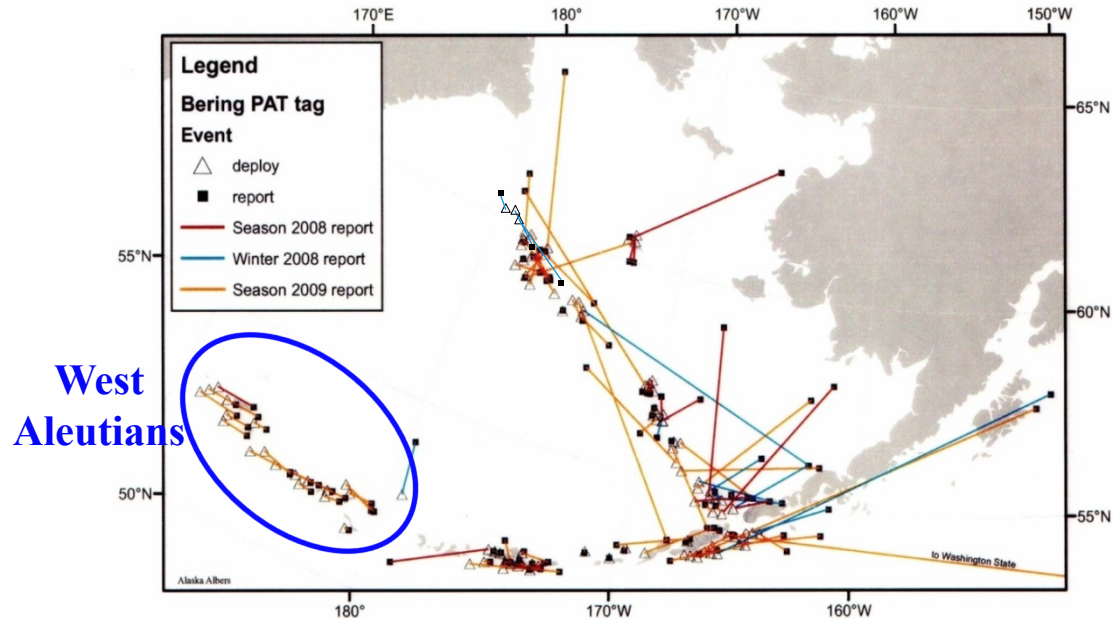
- Movements were constrained within four regions



Geographic dispersal: *endpoints*

(108) tags generated endpoints: (20) during winter (164-361 day); (71) at 365-days

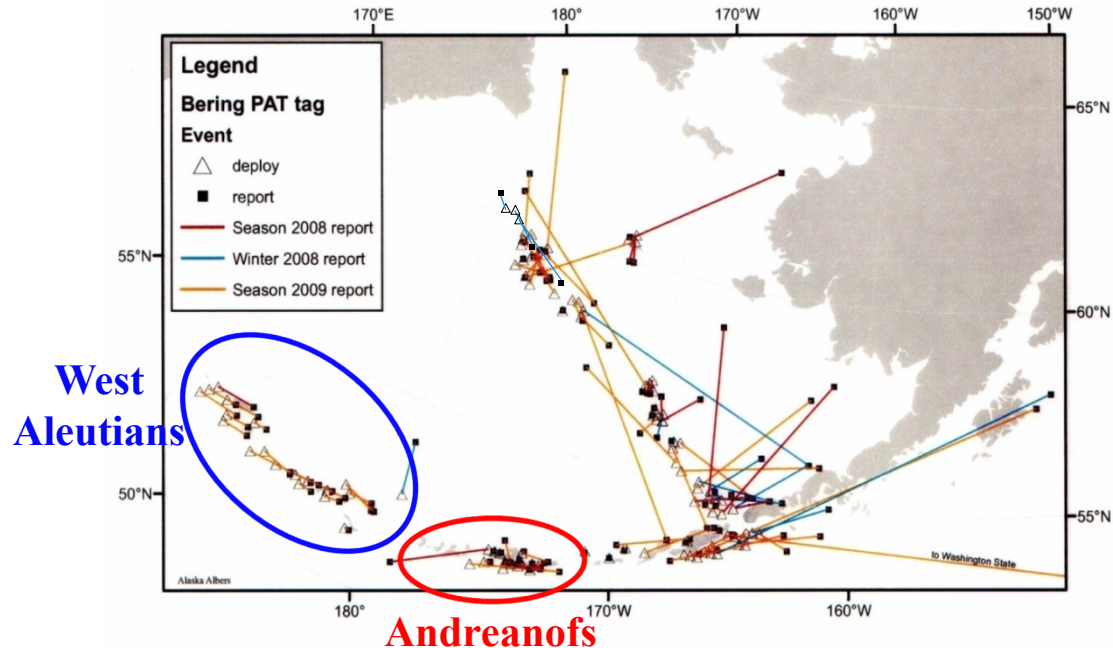
- Movements were constrained within four regions



Geographic dispersal: *endpoints*

(108) tags generated endpoints: (20) during winter (164-361 day); (71) at 365-days

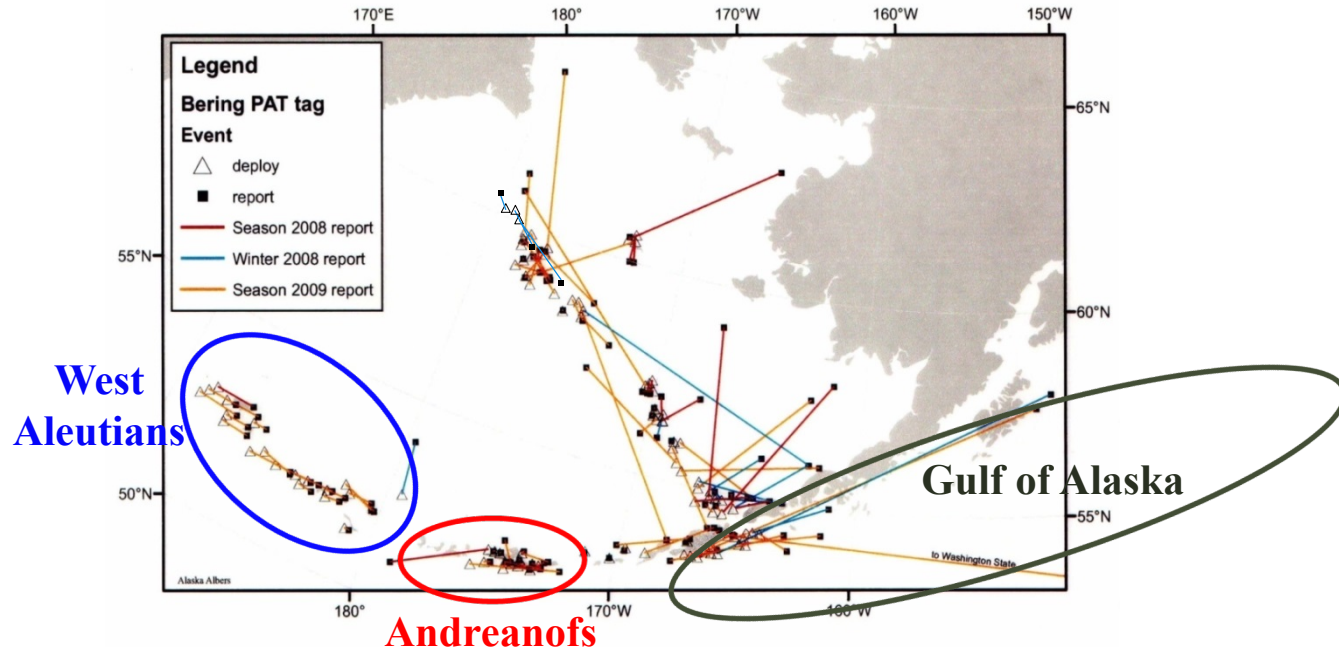
- Movements were constrained within four regions



Geographic dispersal: *endpoints*

(108) tags generated endpoints: (20) during winter (164-361 day); (71) at 365-days

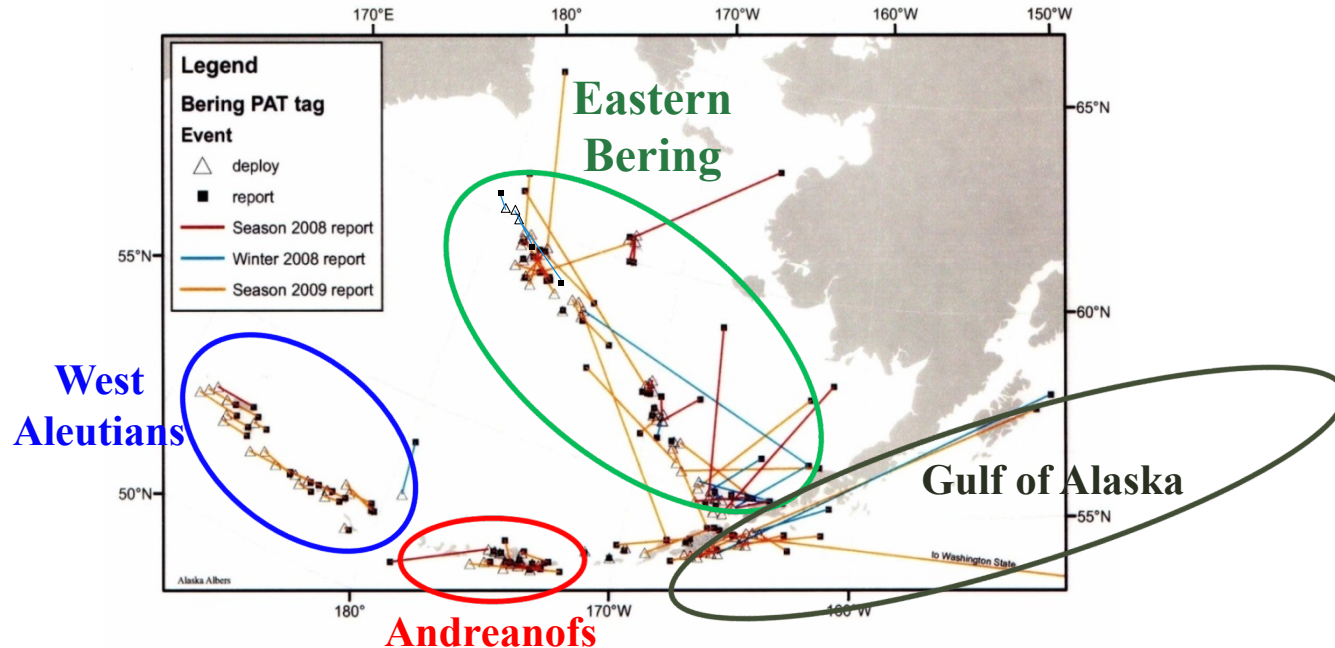
- Movements were constrained within four regions



Geographic dispersal: *endpoints*

(108) tags generated endpoints: (20) during winter (164-361 day); (71) at 365-days

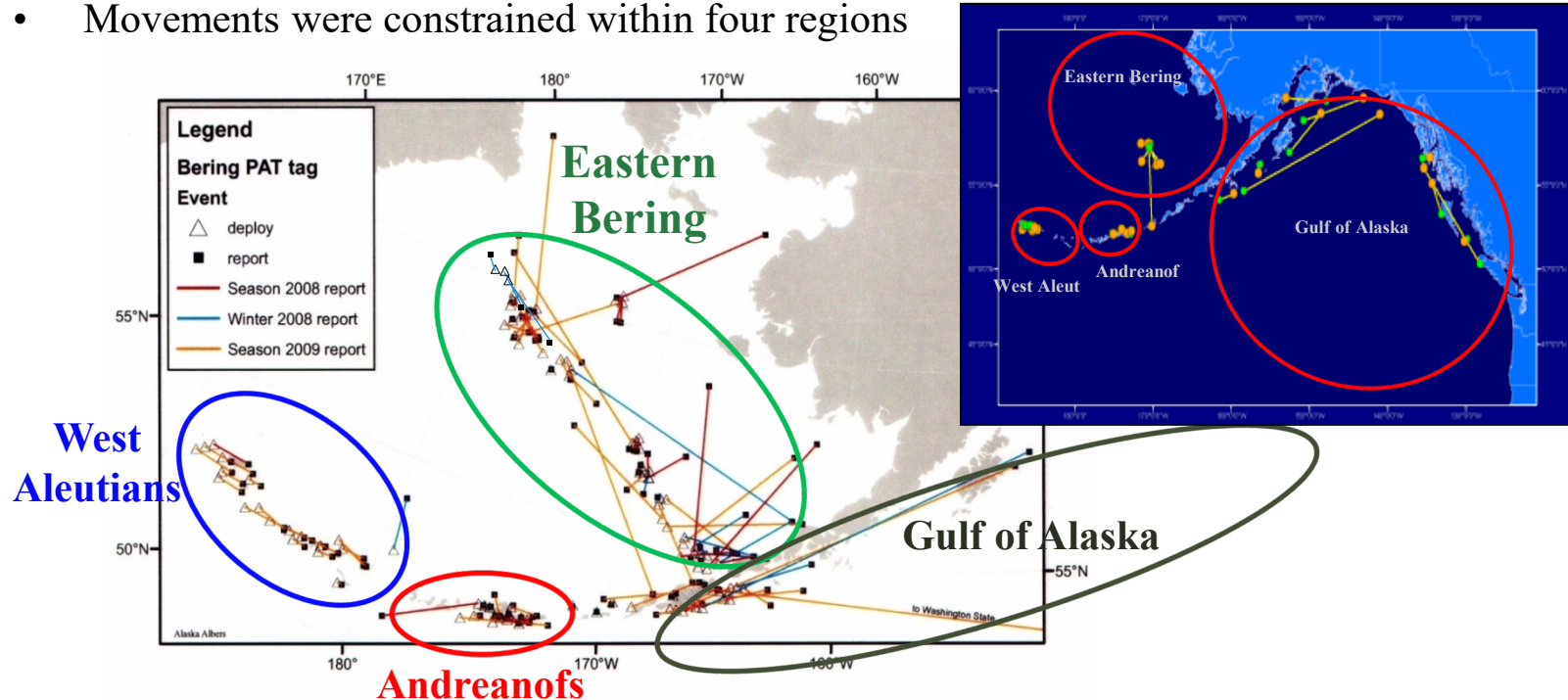
- Movements were constrained within four regions



Geographic dispersal: *endpoints*

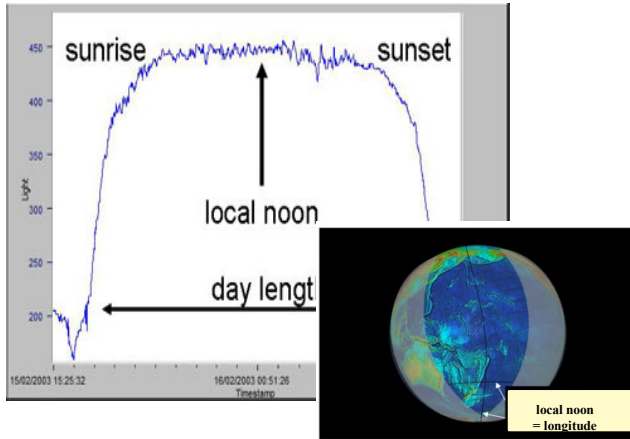
(108) tags generated endpoints: (20) during winter (164-361 day); (71) at 365-days

- Movements were constrained within four regions



Geographic dispersal: *while at liberty*

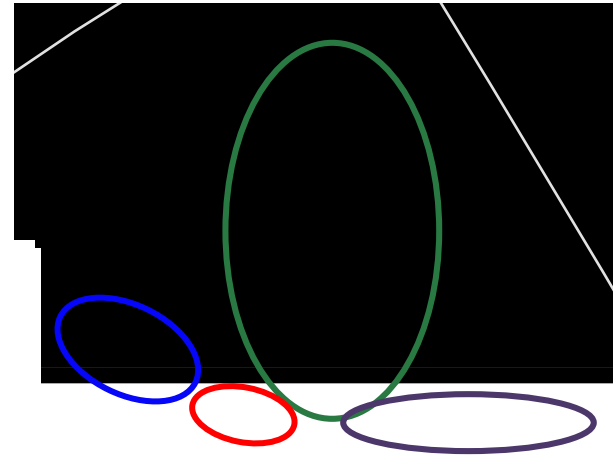
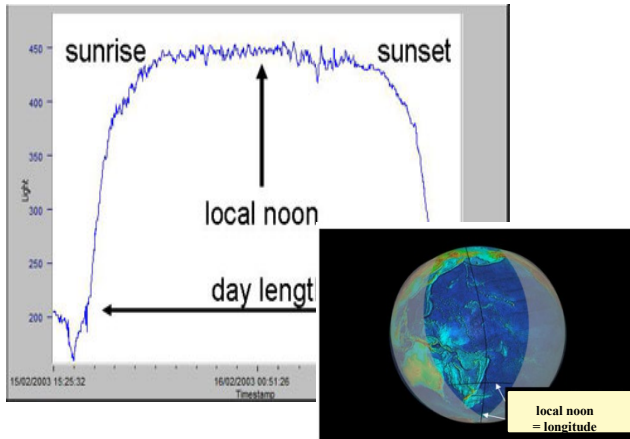
Curiously: (110) tags generated usable twilight data



Geographic dispersal: *while at liberty*

Curiously: (110) tags generated usable twilight data

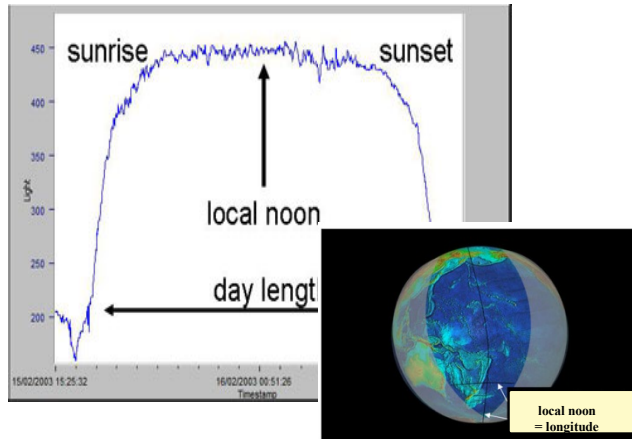
- Producing 6,445 longitudinal geositions (ranging from 1-152 per fish)





Geographic dispersal: *while at liberty*

Curiously: (110) tags generated usable twilight data

- Producing 6,445 longitudinal geopositions (ranging from 1-152 per fish)



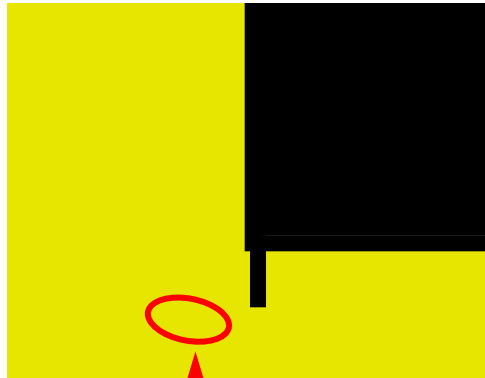
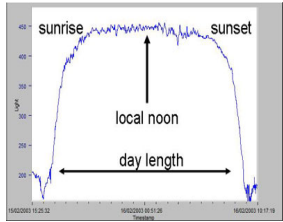

Andreanofs


4A Transition Zone

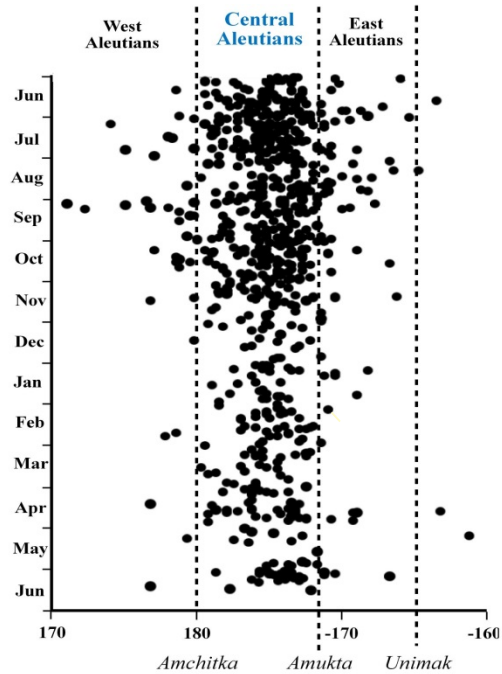


Geographic dispersal: *while at liberty*

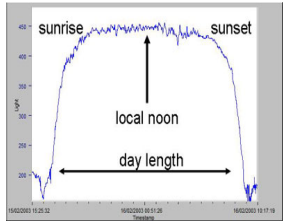
N = 16 fish; 751 positions



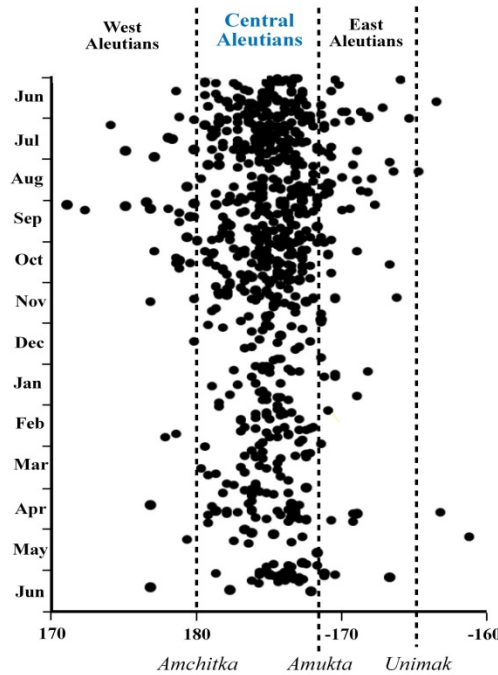
Andreanofs



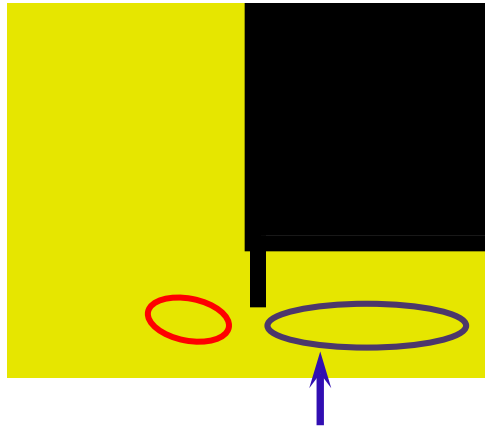
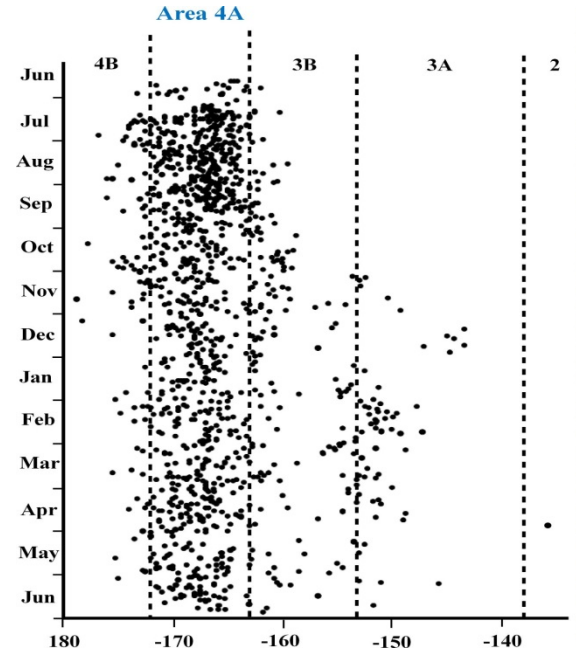
Geographic dispersal: *while at liberty*



N = 16 fish; 751 positions



N = 23 fish; 1,189 positions

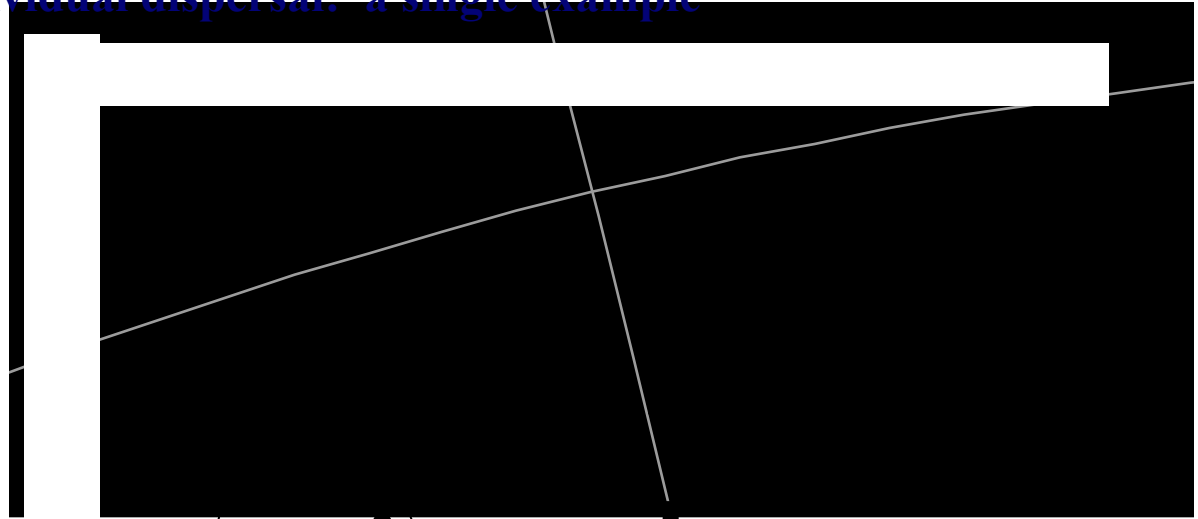
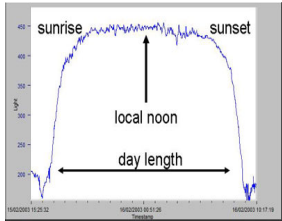


4A Transition Zone



Geographic dispersal: *while at liberty*

Individual dispersal: a single example



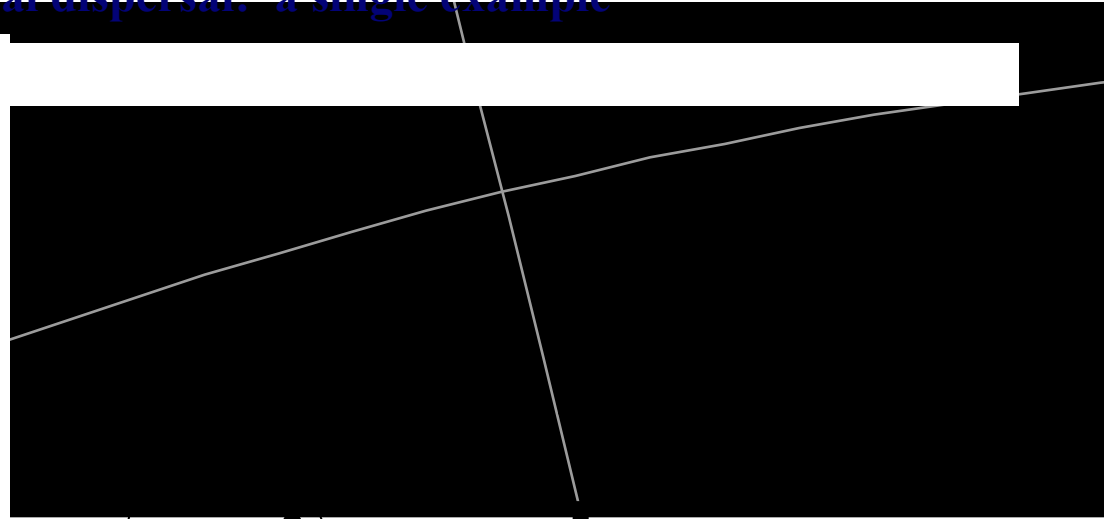
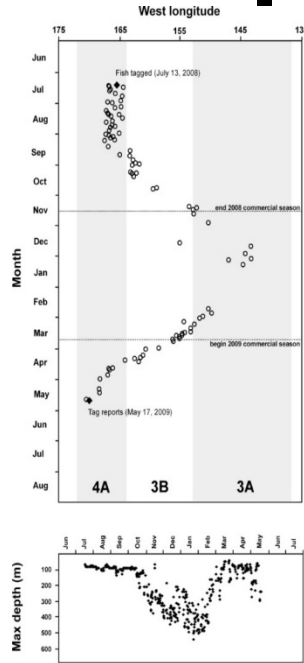
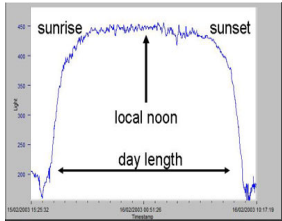
Report Mark

3B



Geographic dispersal: *while at liberty*

Individual dispersal: a single example



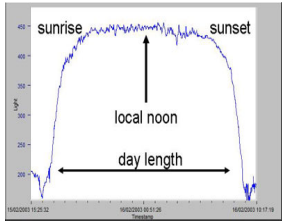
Report Mark

3B

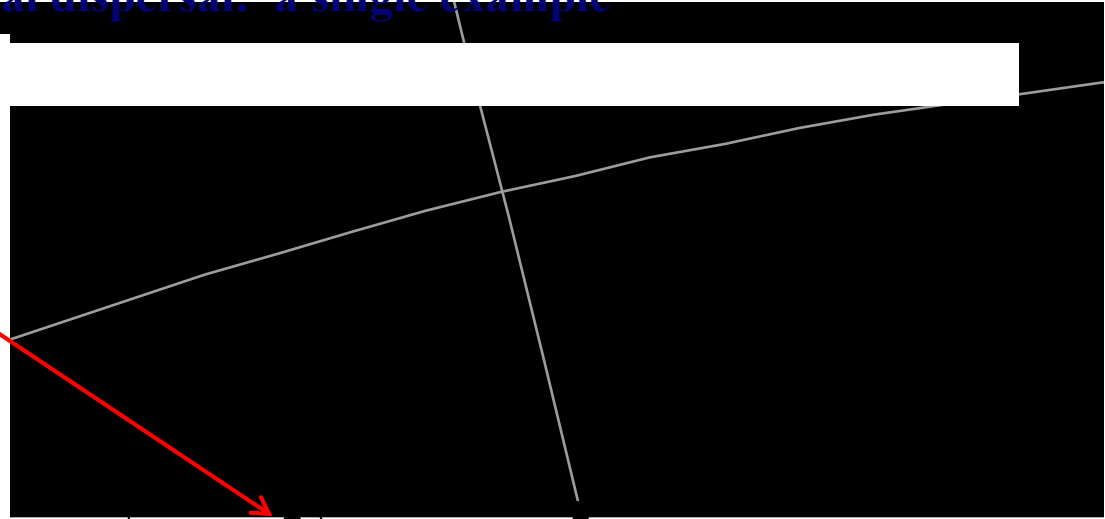
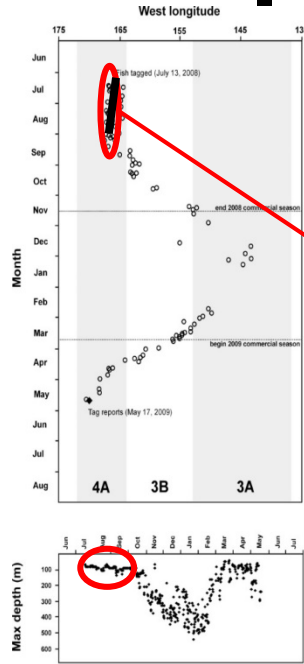


Geographic dispersal: *while at liberty*

Individual dispersal: a single example



Light-based longitudes



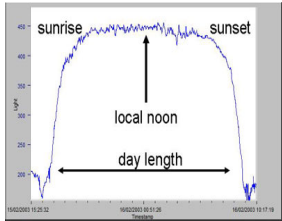
Mark

3B

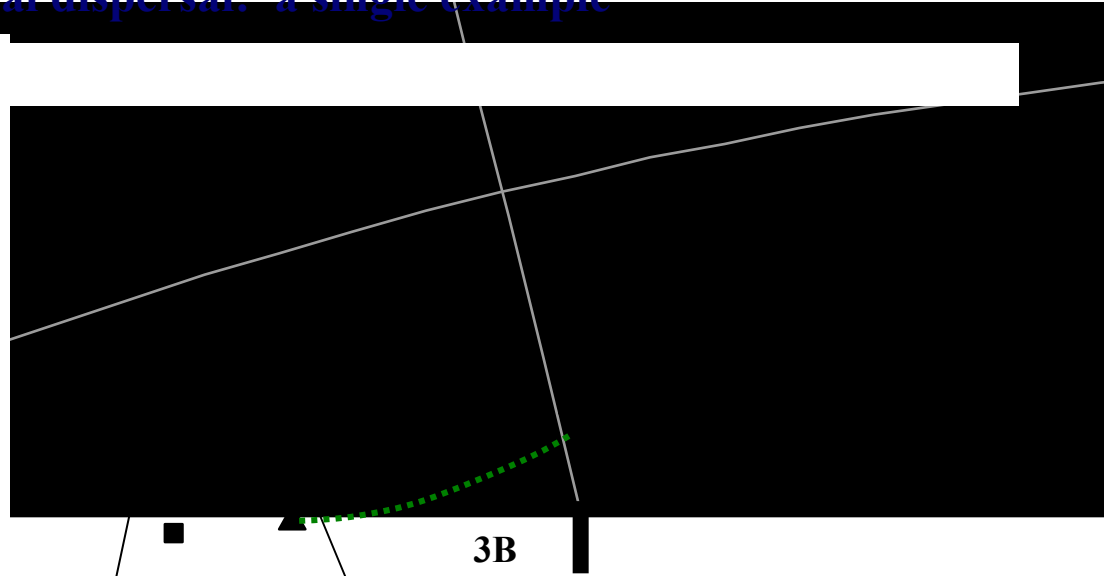
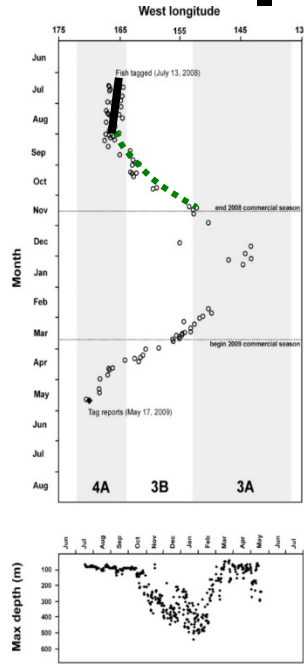


Geographic dispersal: *while at liberty*

Individual dispersal: a single example

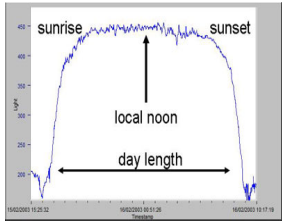


Light-based longitudes

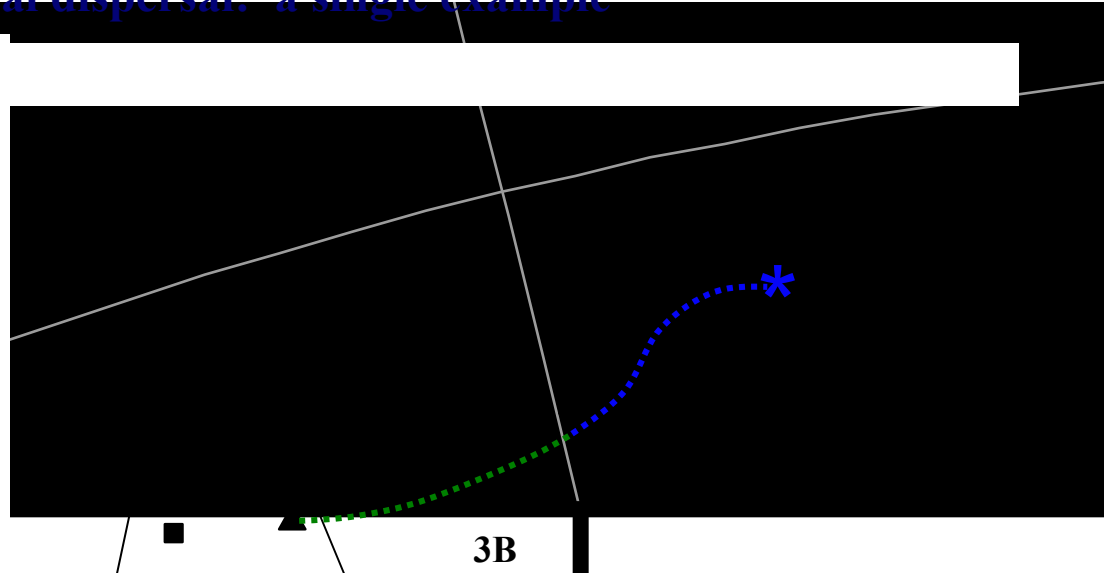
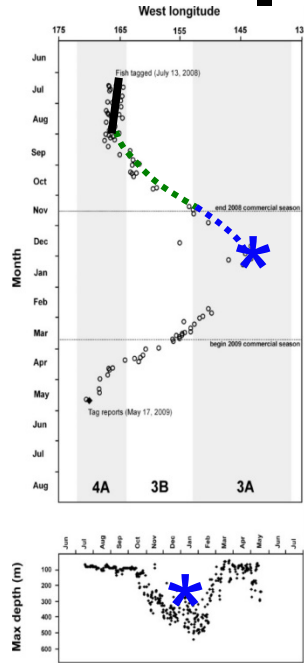


Geographic dispersal: *while at liberty*

Individual dispersal: a single example

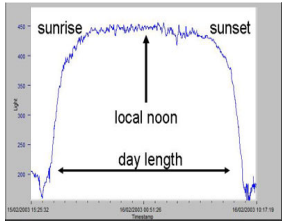


Light-based longitudes

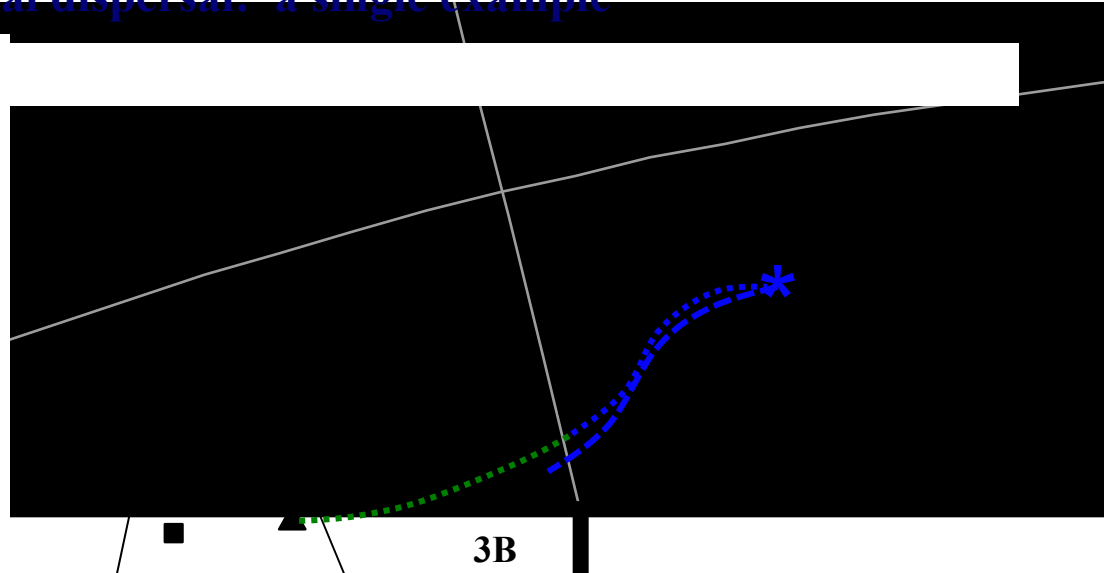
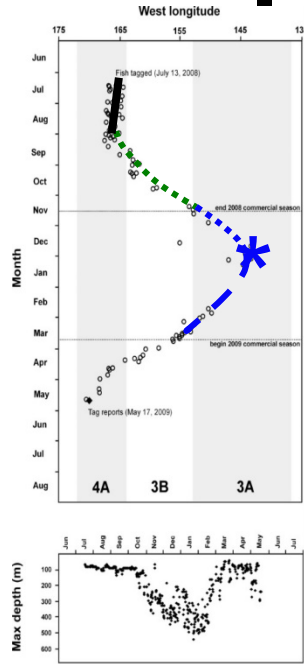


Geographic dispersal: *while at liberty*

Individual dispersal: a single example

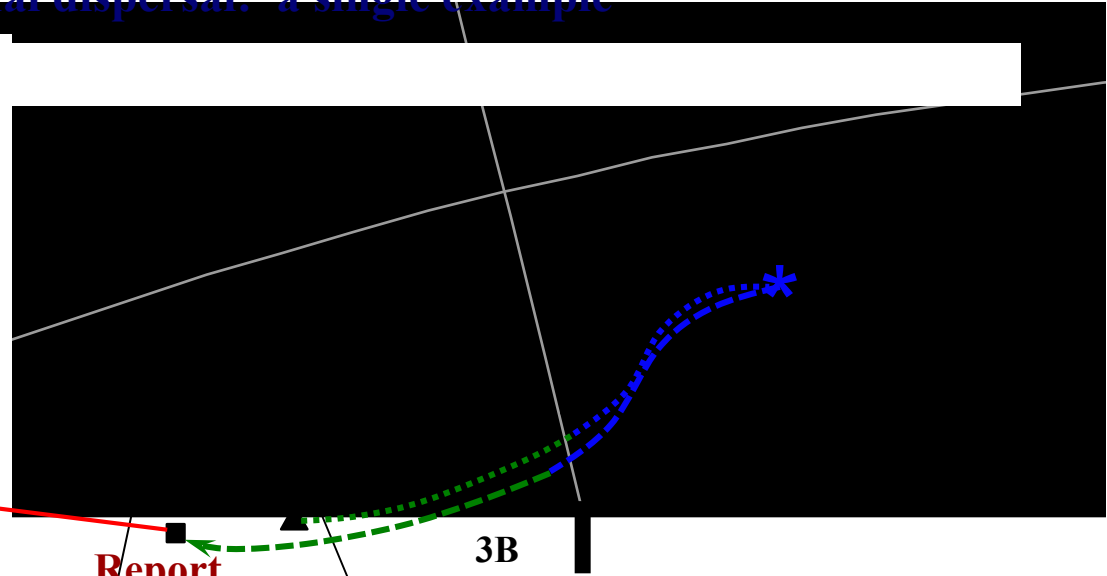
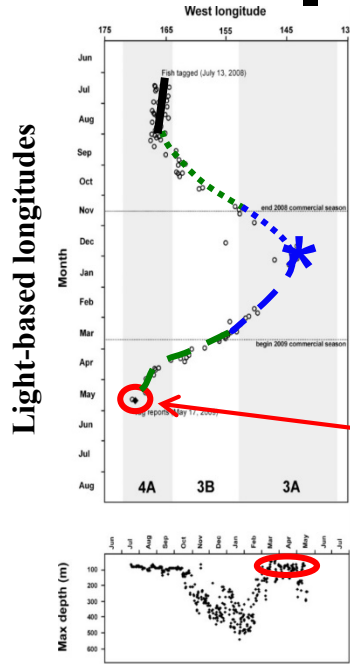
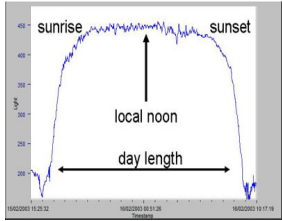


Light-based longitudes



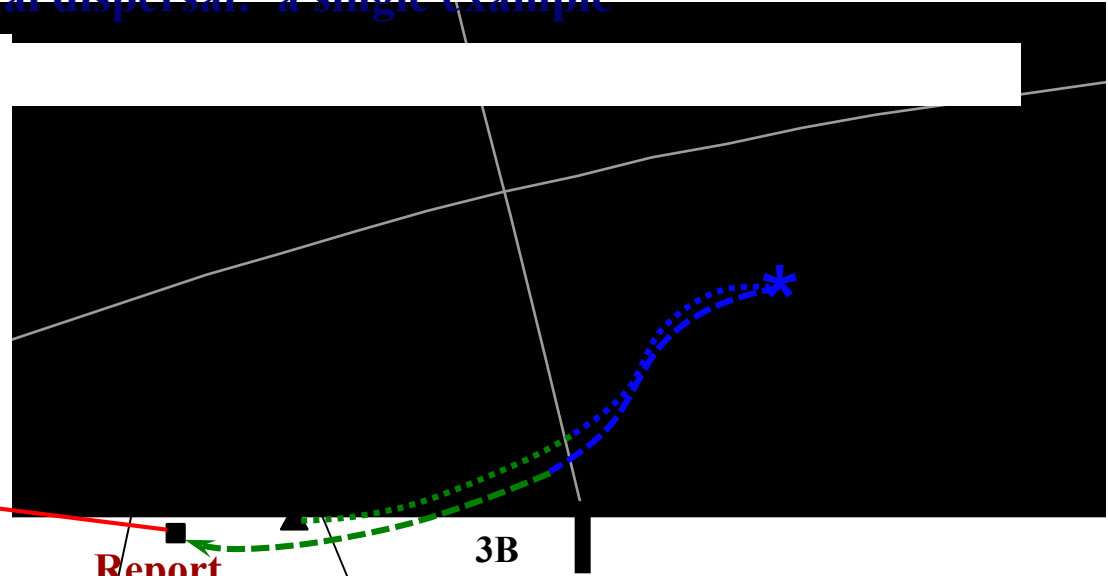
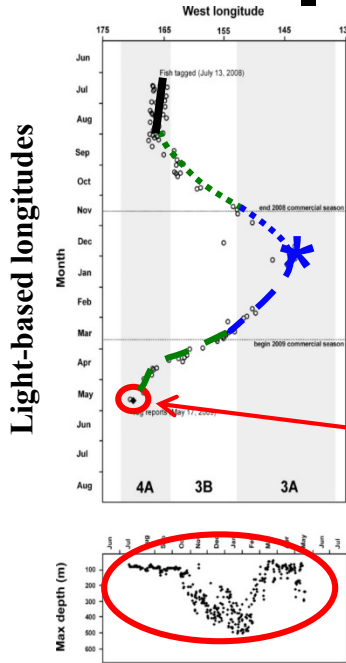
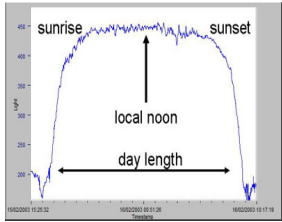
Geographic dispersal: *while at liberty*

Individual dispersal: a single example



Geographic dispersal: *while at liberty*

Individual dispersal: a single example

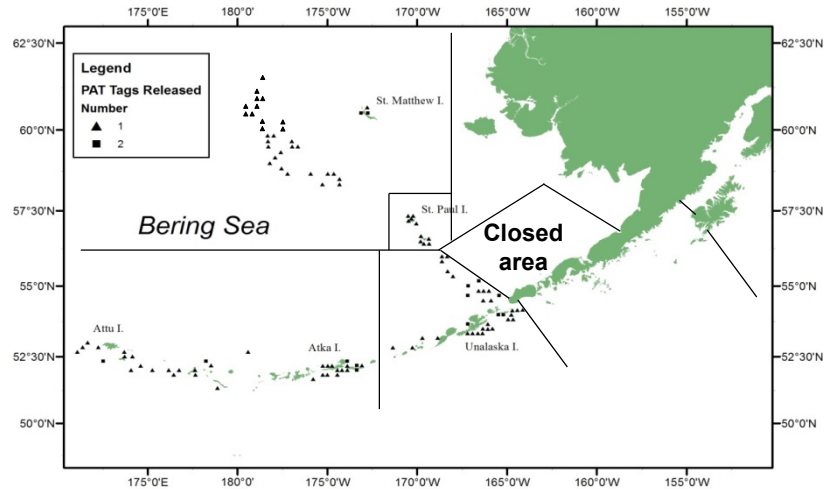


And speaking of depth ...



Seasonal dispersal: *onshore-offshore movements*

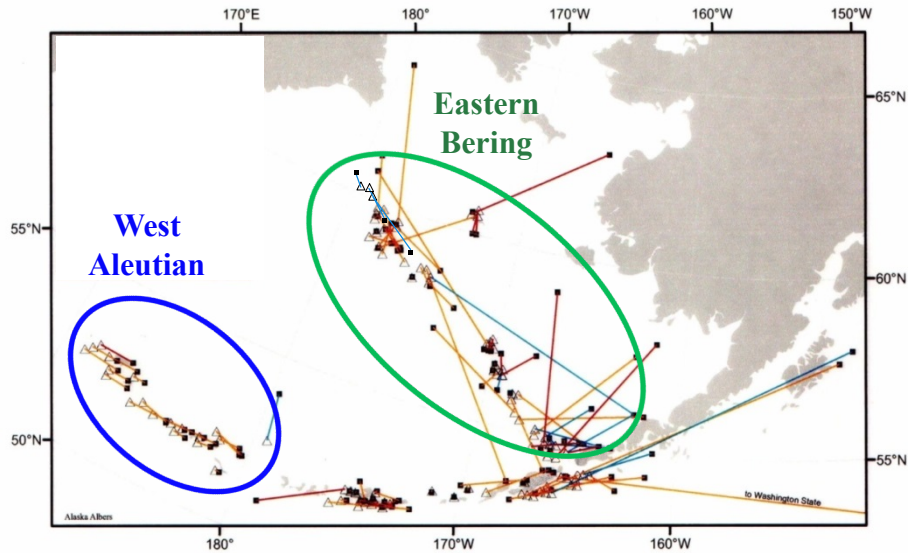
(99) tags generated usable depth data



Seasonal dispersal: *onshore-offshore movements*

(99) tags generated usable depth data

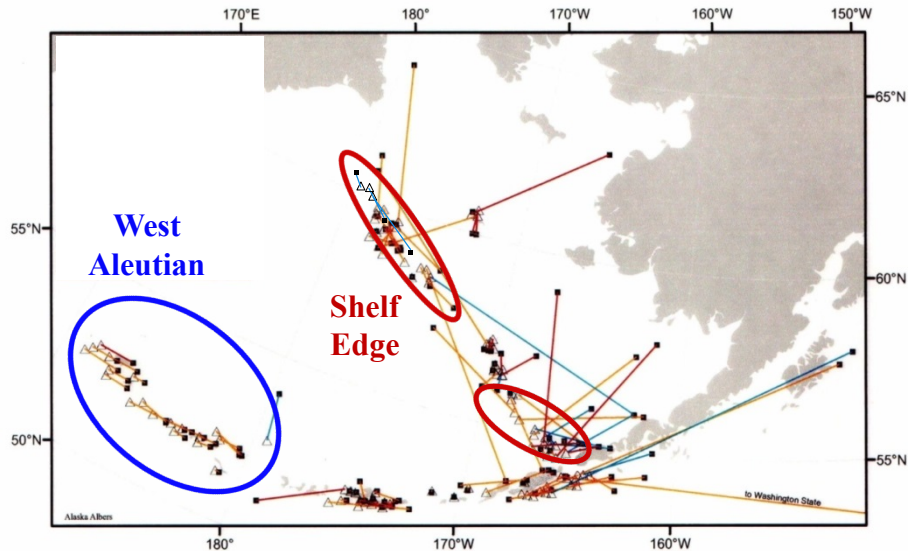
- Focusing on two regions ...



Seasonal dispersal: *onshore-offshore movements*

(99) tags generated usable depth data

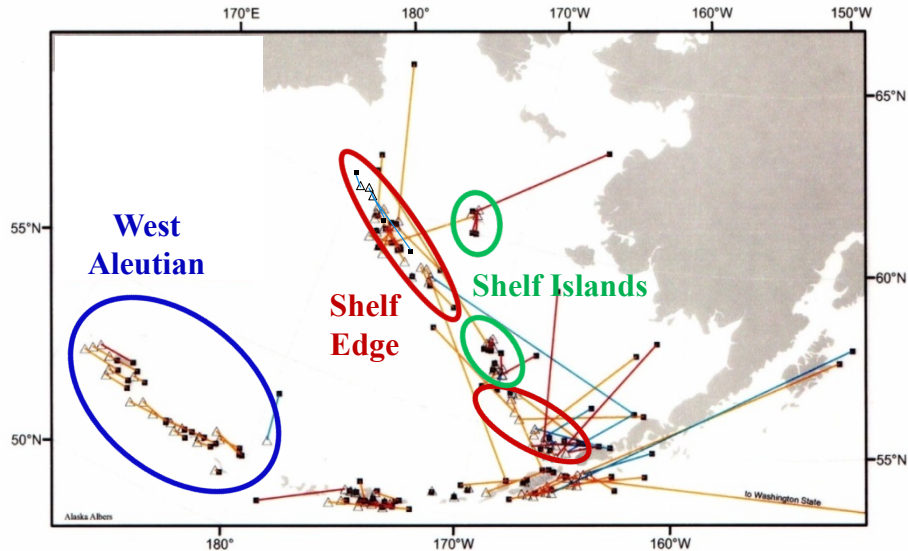
- Focusing on two regions ...



Seasonal dispersal: *onshore-offshore movements*

(99) tags generated usable depth data

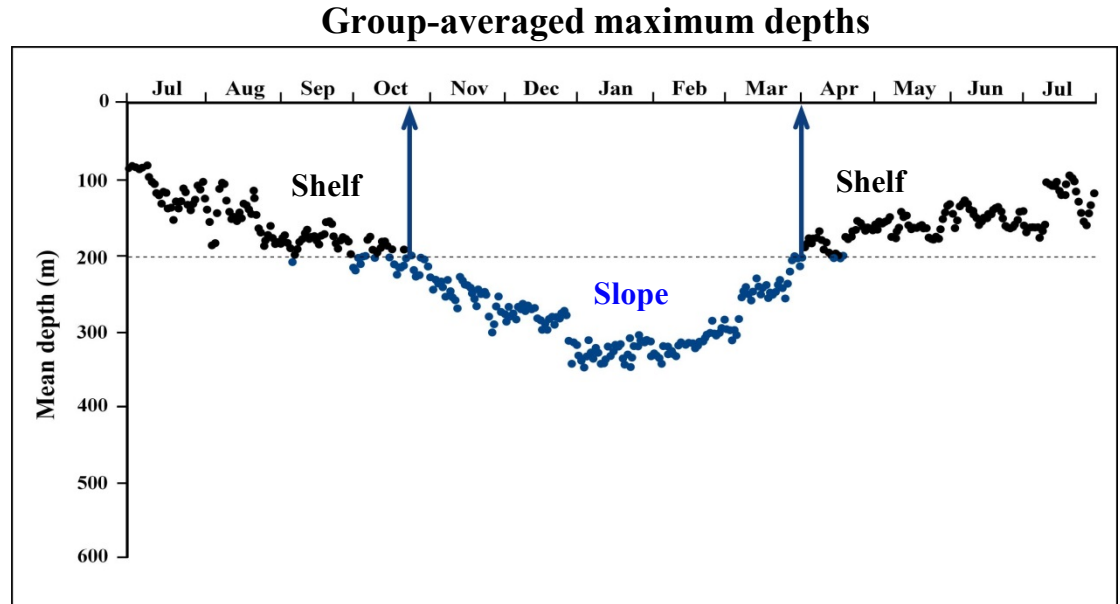
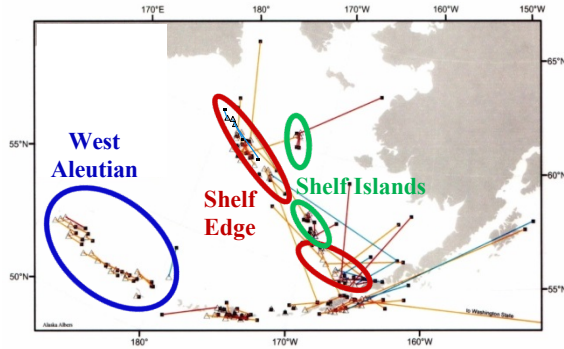
- Focusing on two regions ... as three groups of fish



Seasonal dispersal: *onshore-offshore movements*

(99) tags generated usable depth data

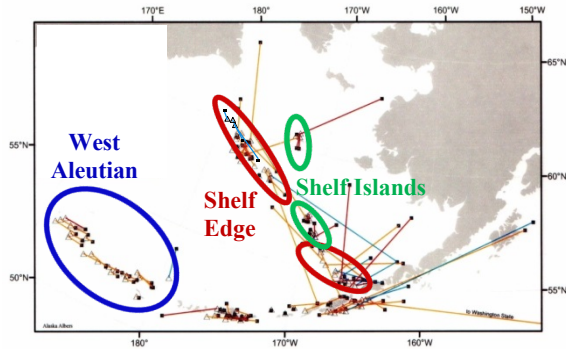
- Focusing on two regions ... as three groups of fish



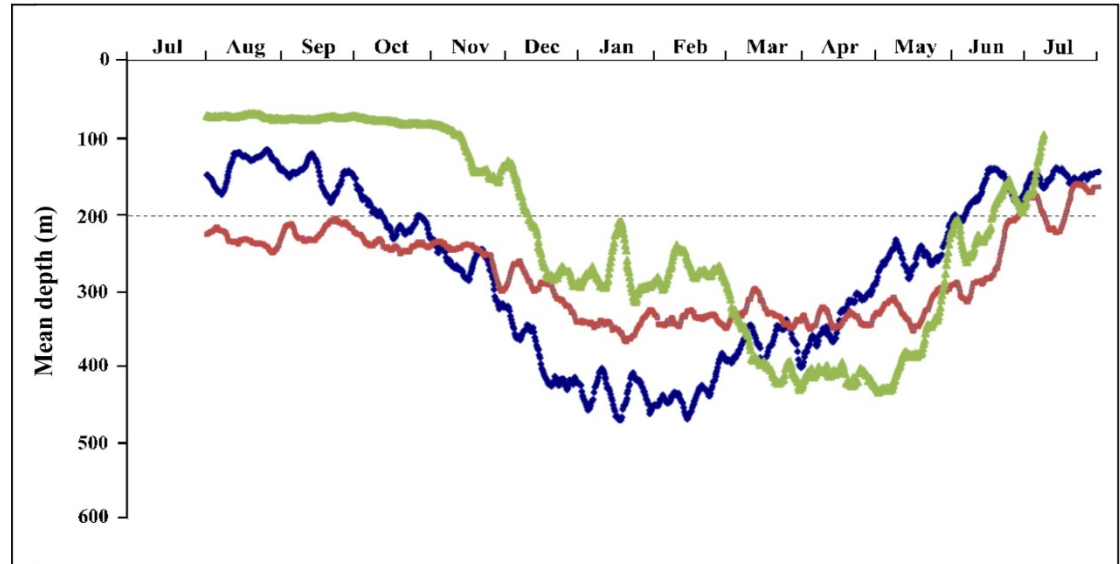
Seasonal dispersal: *onshore-offshore movements*

(99) tags generated usable depth data

- Focusing on two regions ... as three groups of fish



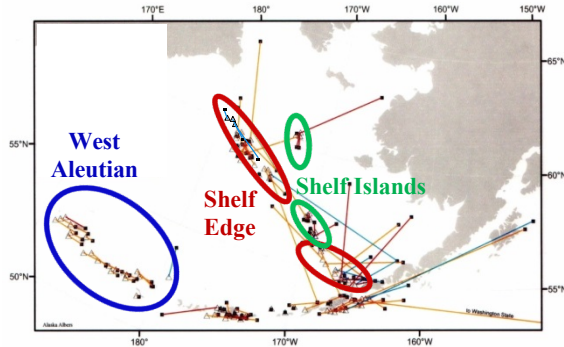
Group-averaged maximum depths



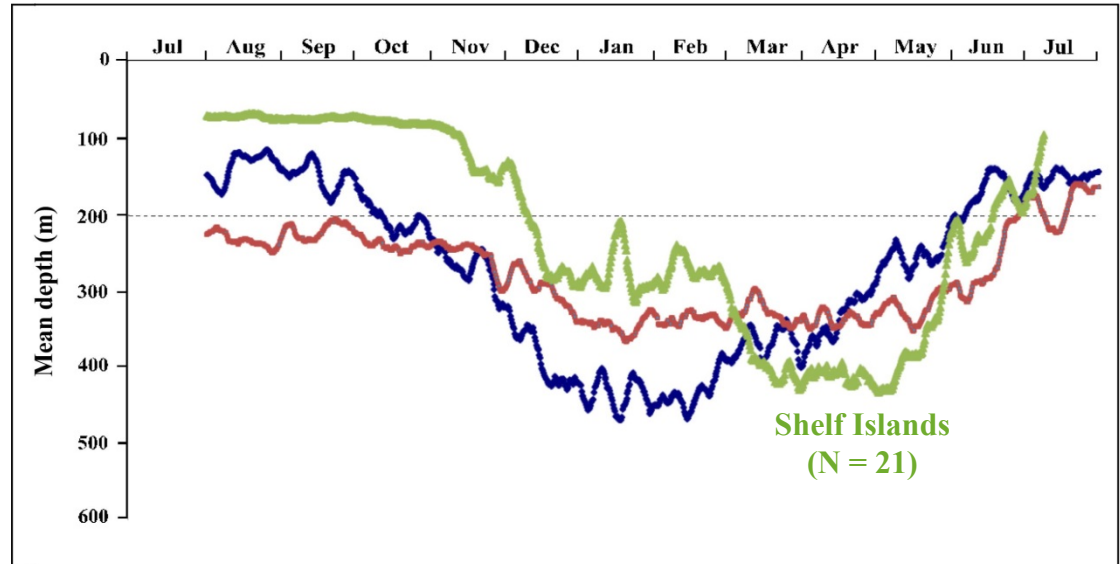
Seasonal dispersal: *onshore-offshore movements*

(99) tags generated usable depth data

- Focusing on two regions ... as three groups of fish



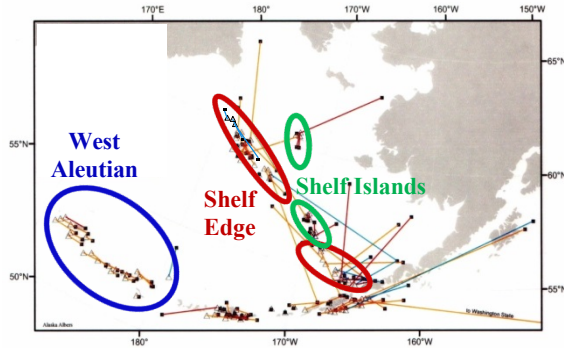
Group-averaged maximum depths



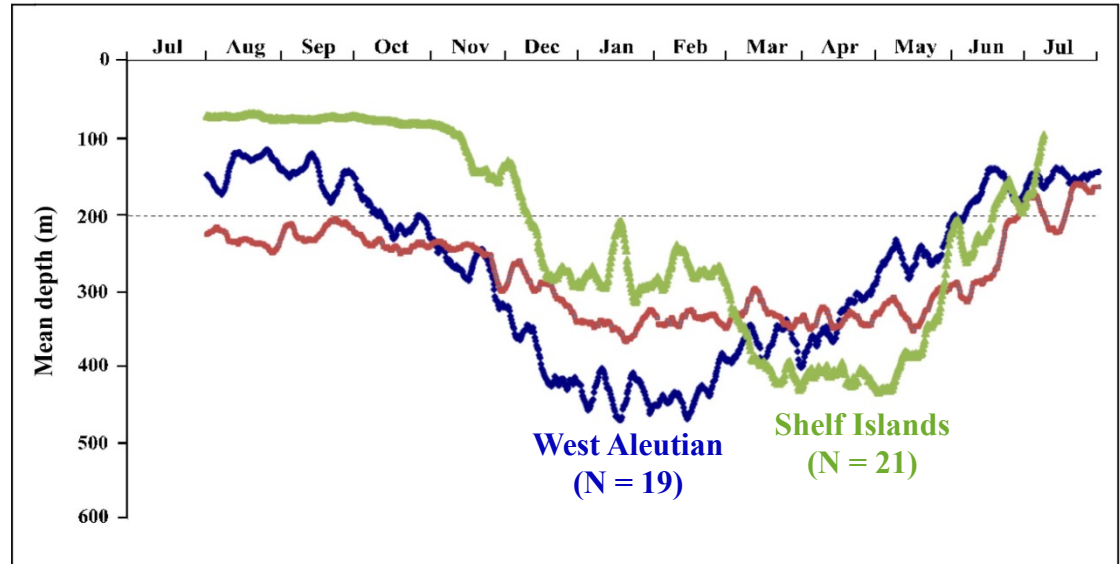
Seasonal dispersal: *onshore-offshore movements*

(99) tags generated usable depth data

- Focusing on two regions ... as three groups of fish



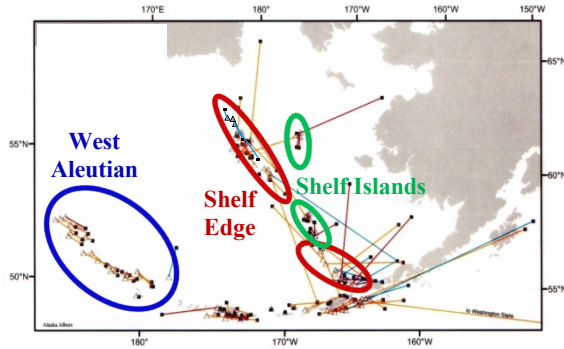
Group-averaged maximum depths



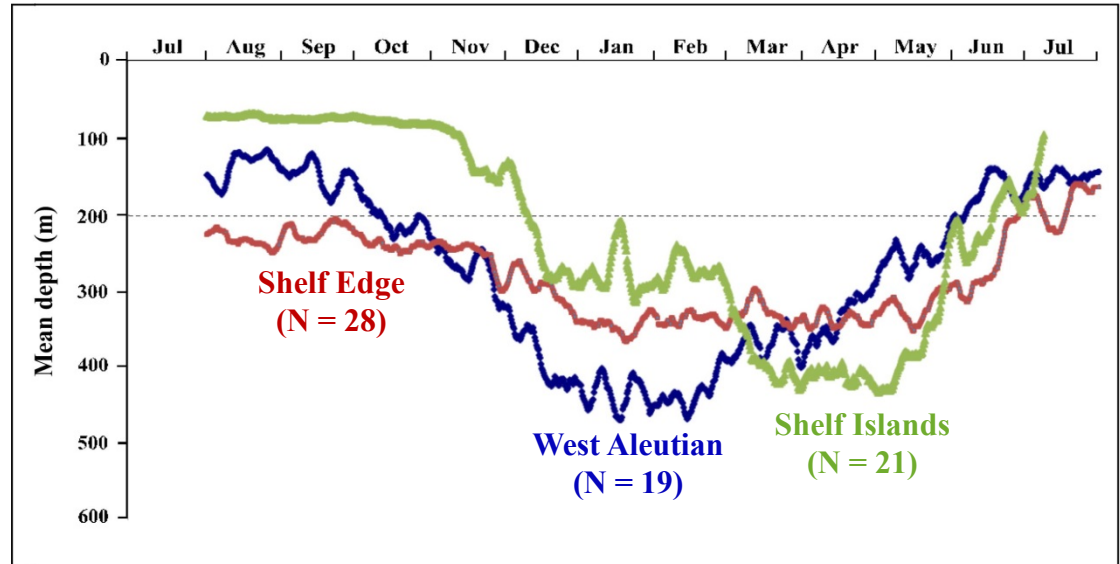
Seasonal dispersal: *onshore-offshore movements*

(99) tags generated usable depth data

- Focusing on two regions ... as three groups of fish



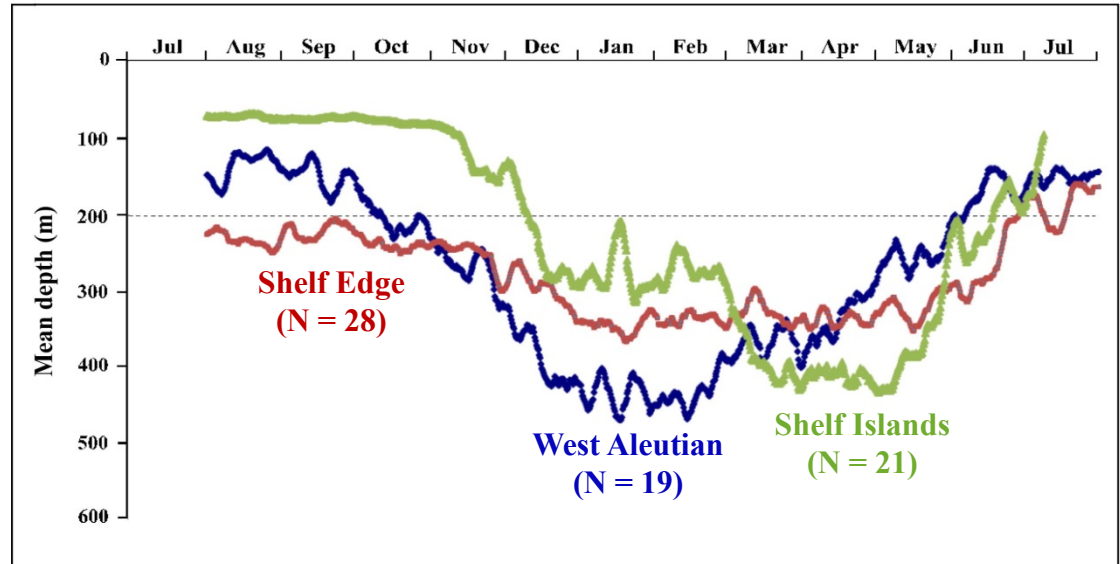
Group-averaged maximum depths



Seasonal dispersal: *onshore-offshore movements*

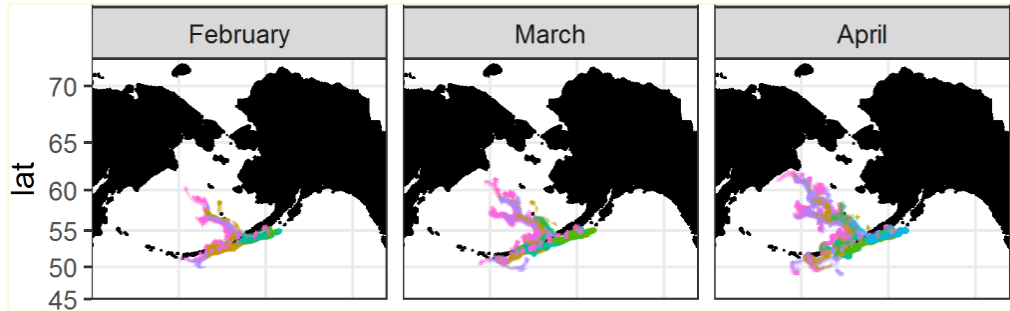
(99) tags generated usable depth data

“Migratory contingents”



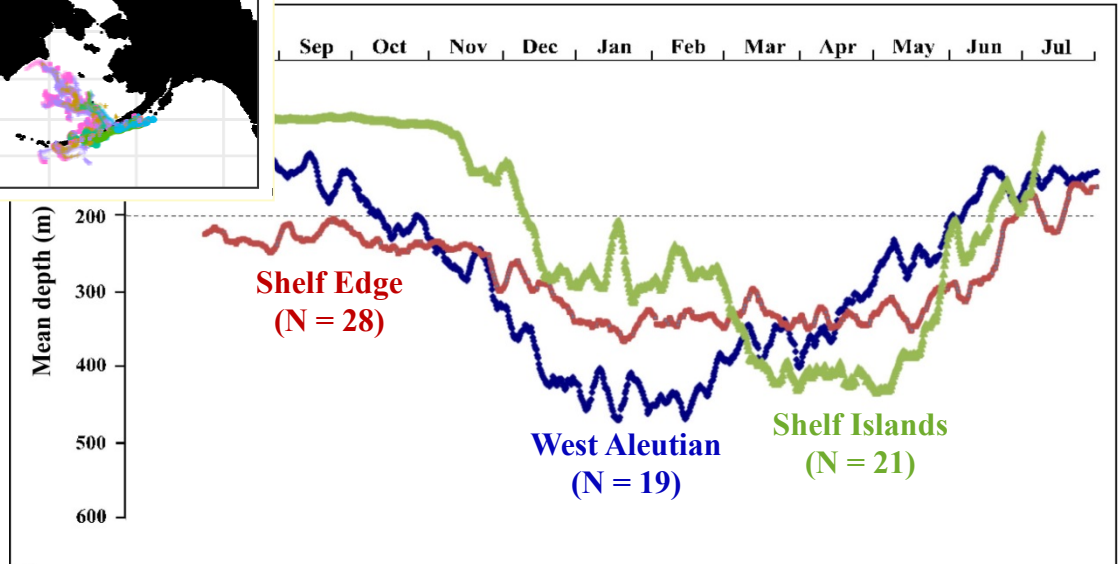
Seasonal dispersal: *onshore-offshore movements*

(99) tags generated usable depth data



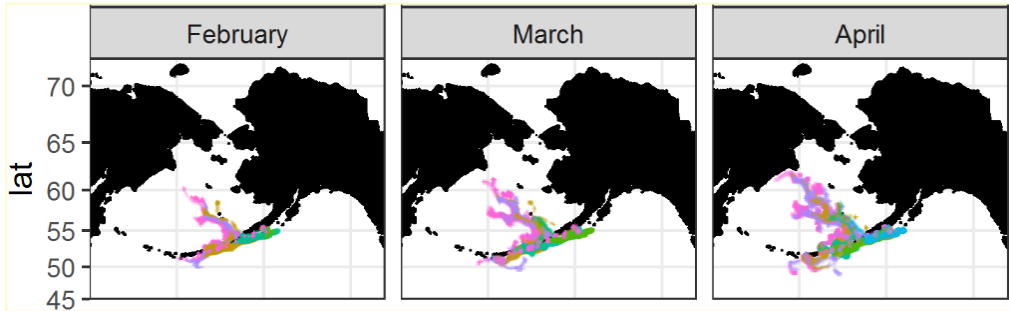
That likely deliver their larvae into substantially different conditions within each spawning season ...

“Migratory contingents”

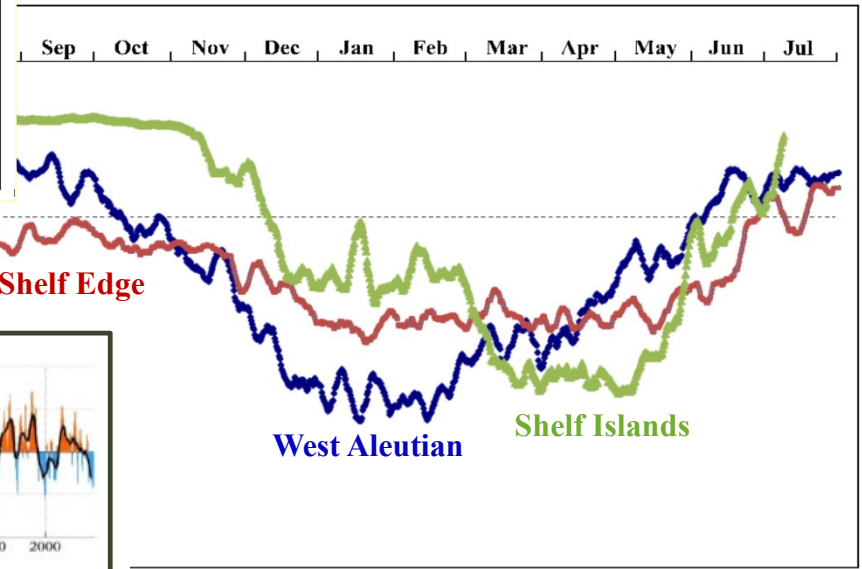


Seasonal dispersal: *onshore-offshore movements*

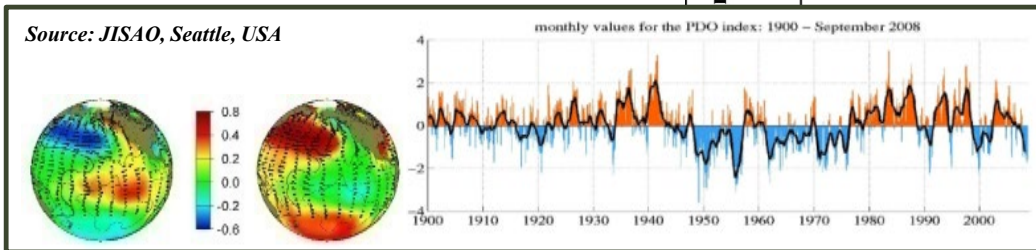
(99) tags generated usable depth data



“Migratory contingents”



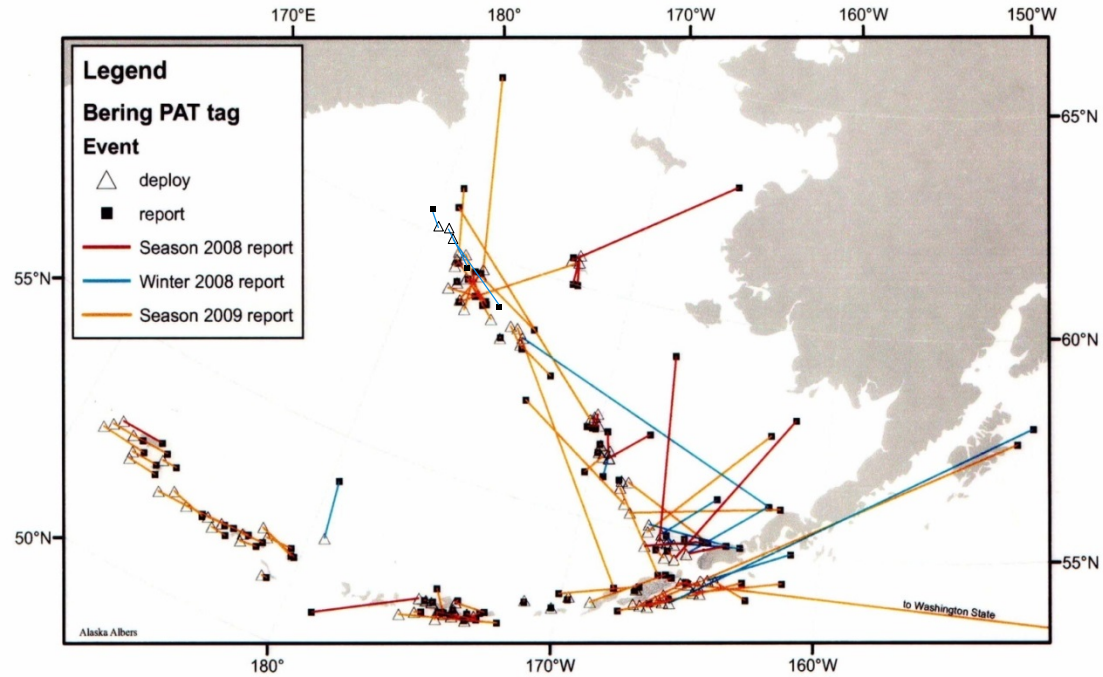
... allowing for population-level “environmental bet hedging”



What else had you to learn?

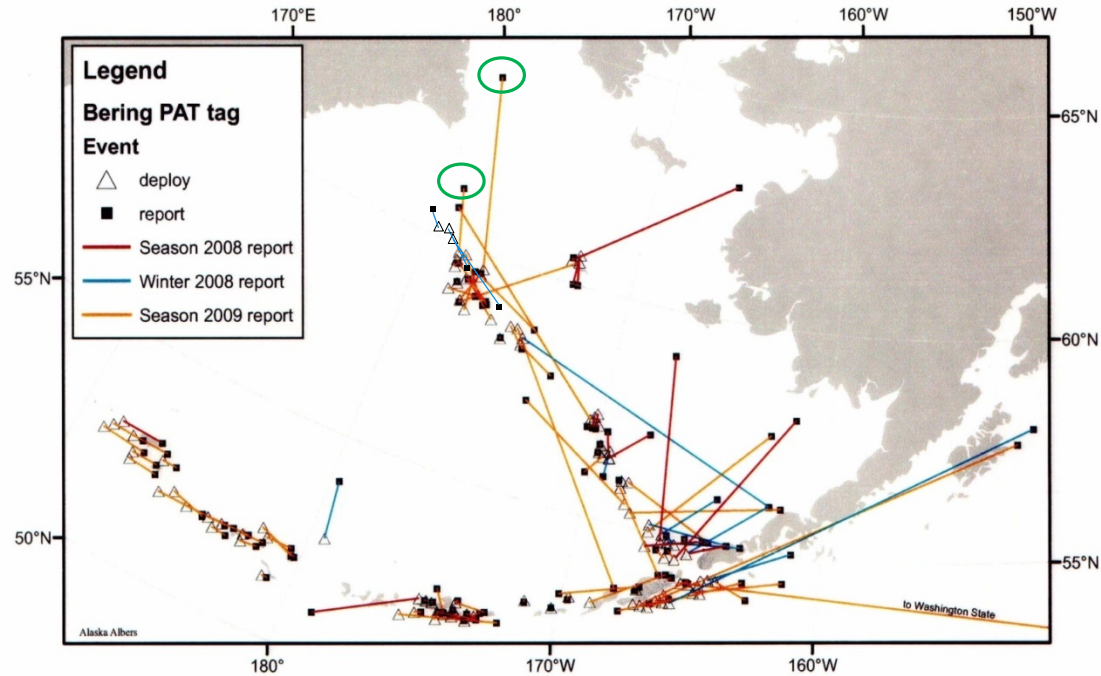


Returning to geographic dispersal



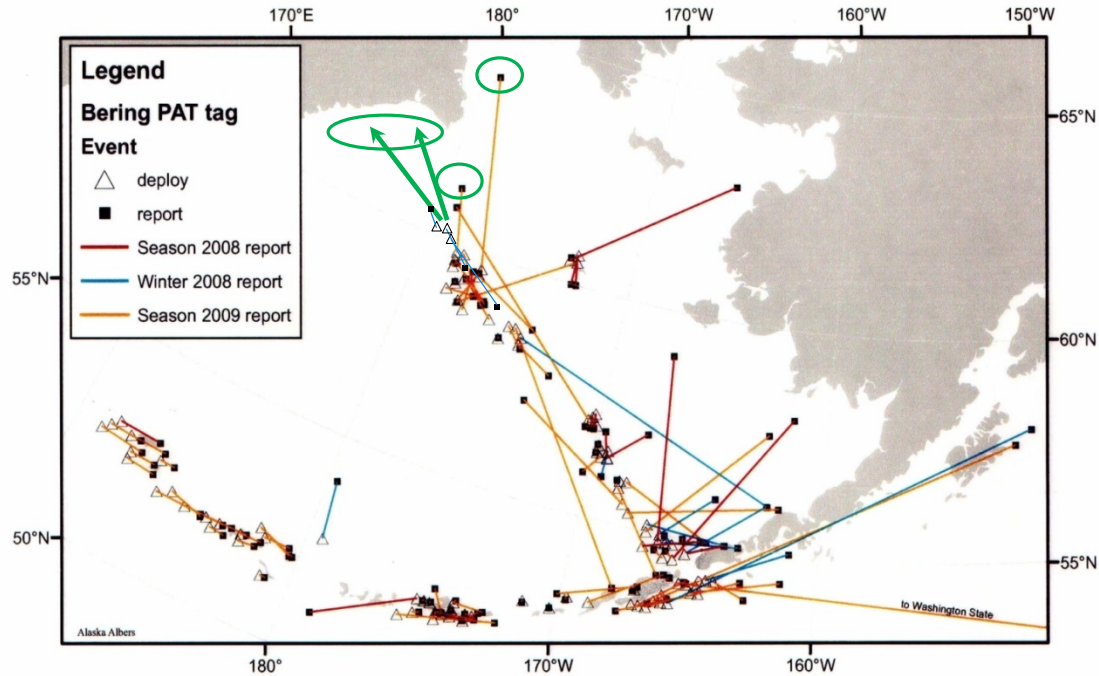
Returning to geographic dispersal

Two of the pop-ups were in Russian waters



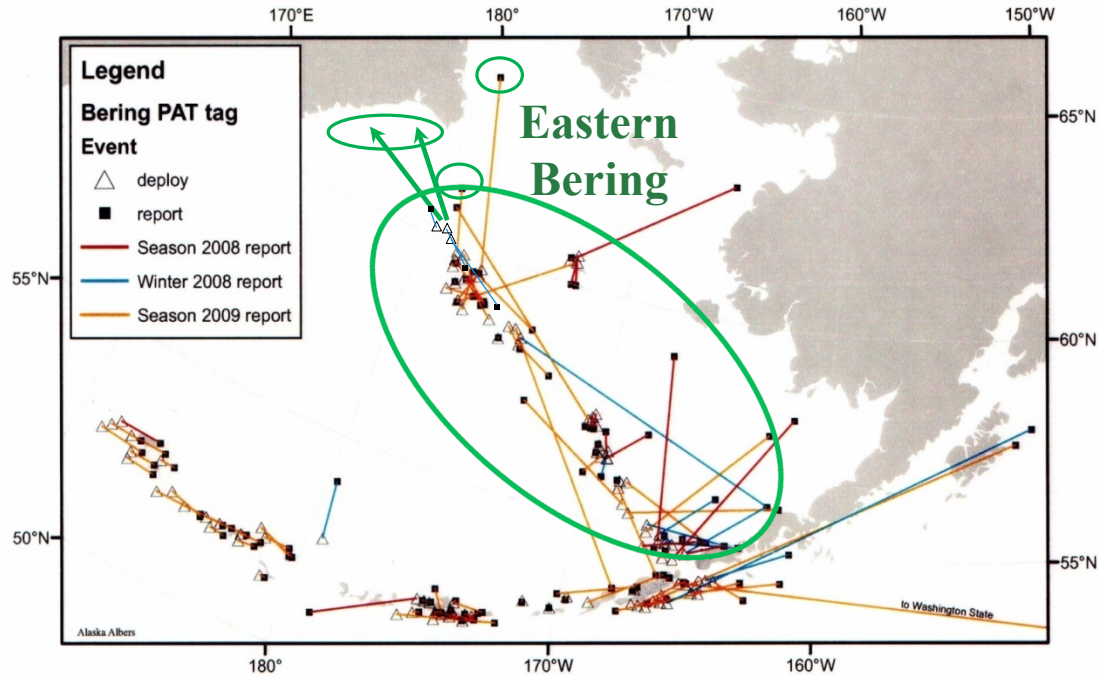
Returning to geographic dispersal

Two of the pop-ups were in Russian waters; plus two fish recaptured



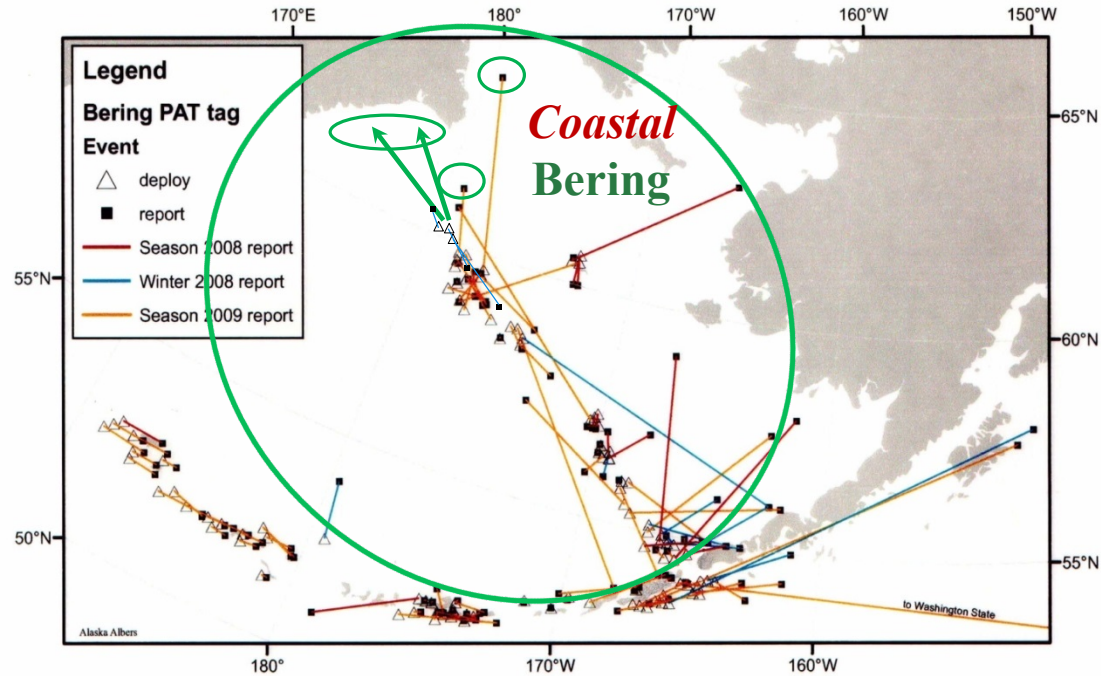
Returning to geographic dispersal

Two of the pop-ups were in Russian waters; plus two fish recaptured



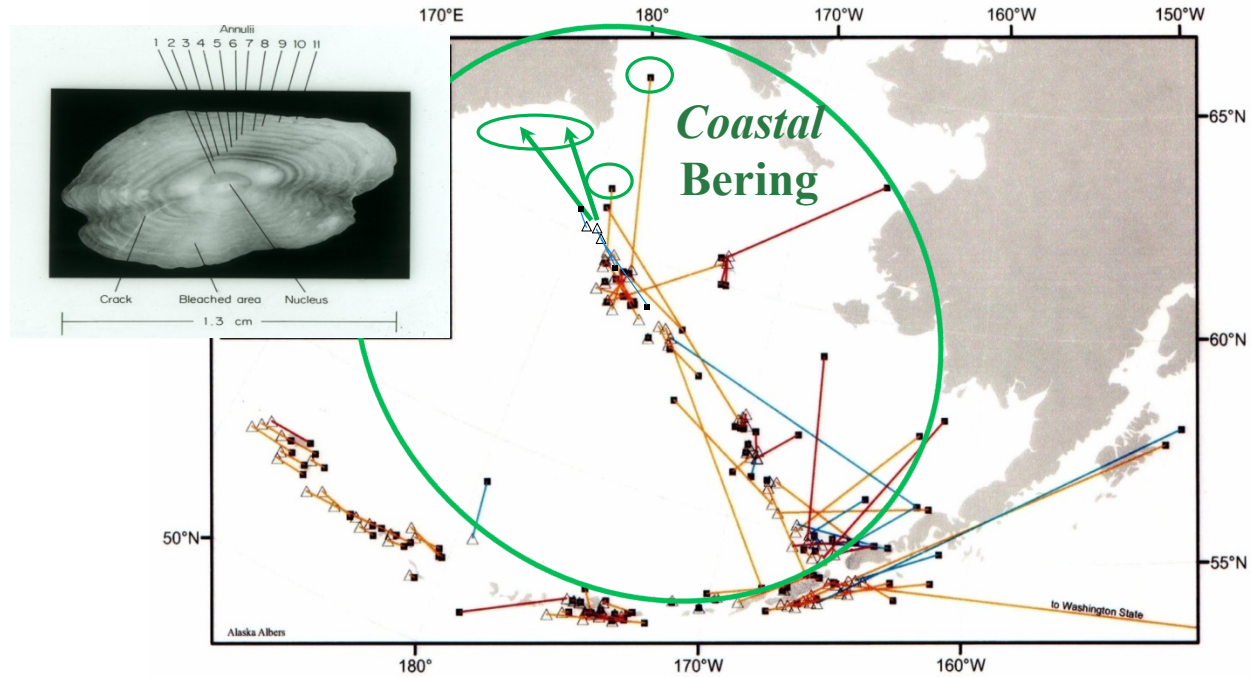
Returning to geographic dispersal

Two of the pop-ups were in Russian waters; plus two fish recaptured



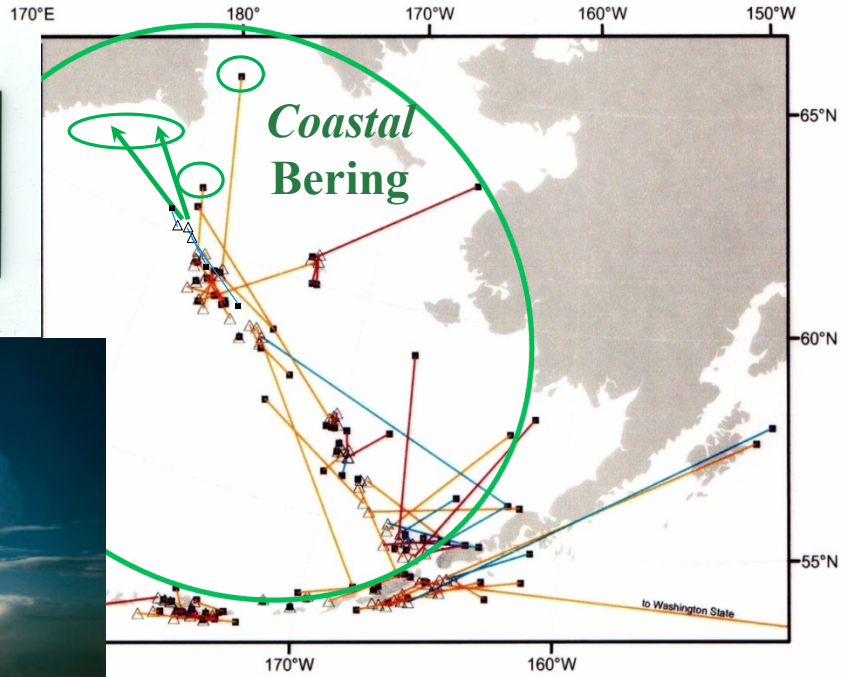
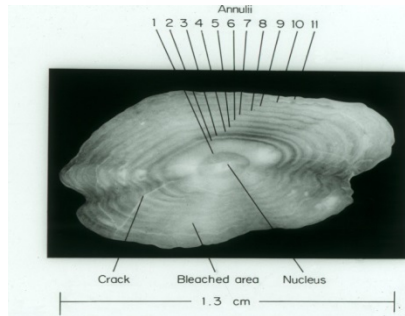
Curiouser and curiouser

The Otolith Connection:



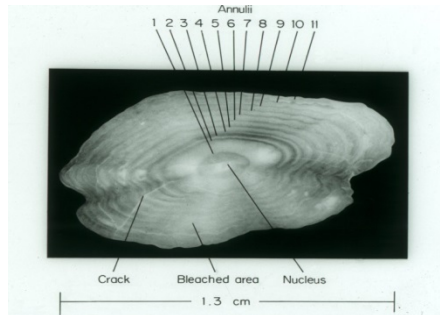
Curiouser and curiouser

The Otolith Connection:



Curiouser and curiouser

The Otolith Connection:



Pre- and post-bomb radiocarbon in fish otoliths

John M. Kalish

MAF Fisheries Greta Point, P.O. Box 297, Wellington, New Zealand

Received December 9, 1992; revision accepted January 4, 1993

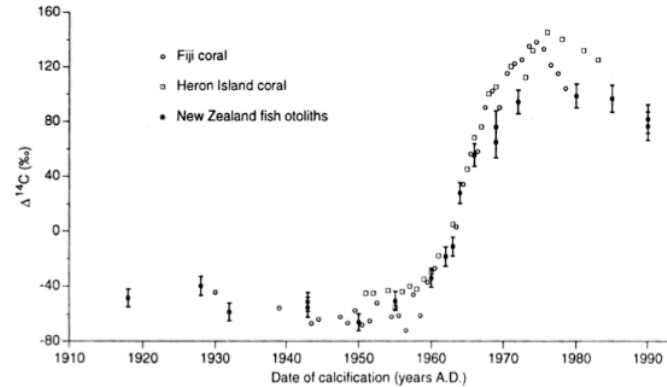
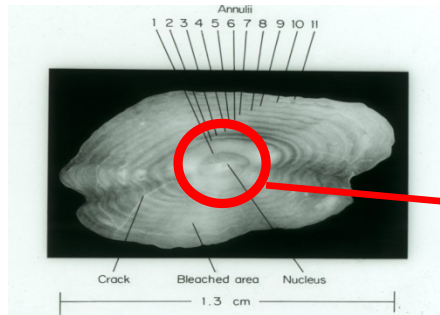


Fig. 1. $\Delta^{14}\text{C}$ (± 1 sd) of *Pagrus auratus* otolith aragonite from New Zealand over the time period 1918 to 1990. $\Delta^{14}\text{C}$ measurements from hermatypic corals sampled in Fiji and Heron Island, Australia are presented for comparison [5,8].



Curiouser and curiouser

The Otolith Connection:



<Age-45



Pre- and post-bomb radiocarbon in fish otoliths

John M. Kalish

MAF Fisheries Greta Point, P.O. Box 297, Wellington, New Zealand

Received December 9, 1992; revision accepted January 4, 1993

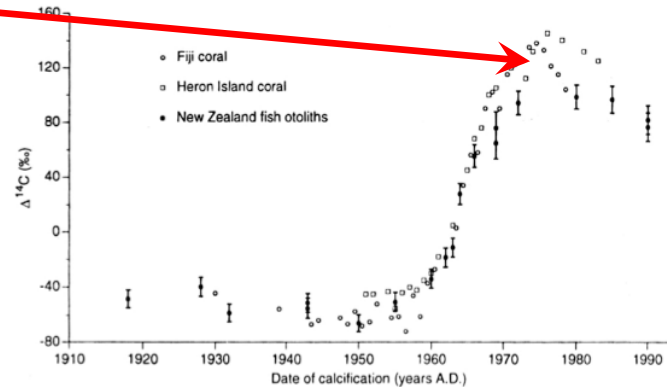
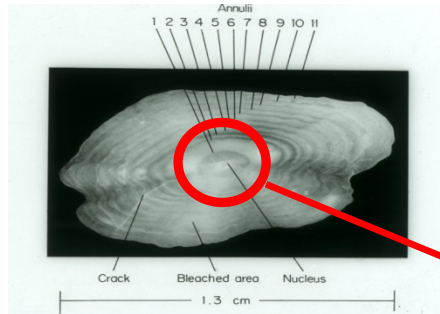


Fig. 1. $\Delta^{14}\text{C}$ (± 1 sd) of *Pagrus auratus* otolith aragonite from New Zealand over the time period 1918 to 1990. $\Delta^{14}\text{C}$ measurements from hermatypic corals sampled in Fiji and Heron Island, Australia are presented for comparison [5,8].



Curiouser and curiouser

The Otolith Connection:



Age-60+



Pre- and post-bomb radiocarbon in fish otoliths

John M. Kalish

MAF Fisheries Greta Point, P.O. Box 297, Wellington, New Zealand

Received December 9, 1992; revision accepted January 4, 1993

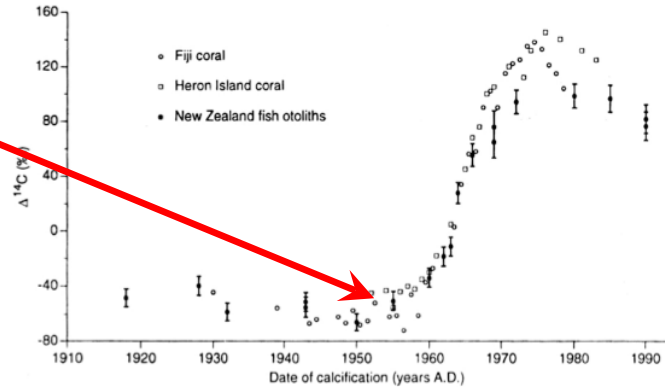
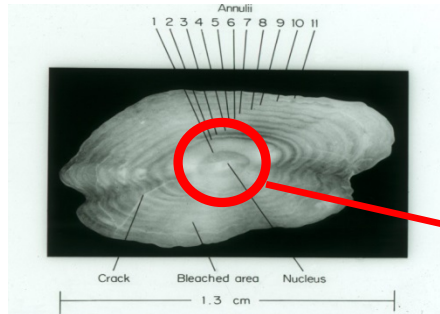


Fig. 1. $\Delta^{14}\text{C}$ (± 1 sd) of *Pagrus auratus* otolith aragonite from New Zealand over the time period 1918 to 1990. $\Delta^{14}\text{C}$ measurements from hermatypic corals sampled in Fiji and Heron Island, Australia are presented for comparison [5,8].



Curiouser and curiouser

The Otolith Connection:



~Age 55



Pre- and post-bomb radiocarbon in fish otoliths

John M. Kalish

MAF Fisheries Greta Point, P.O. Box 297, Wellington, New Zealand

Received December 9, 1992; revision accepted January 4, 1993

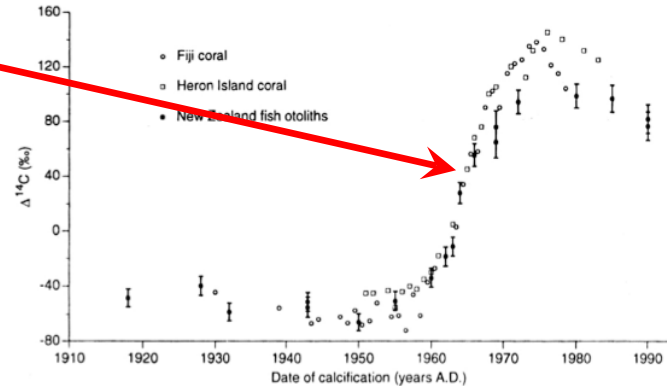
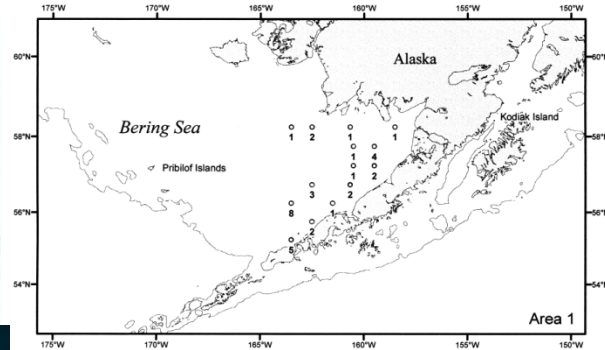
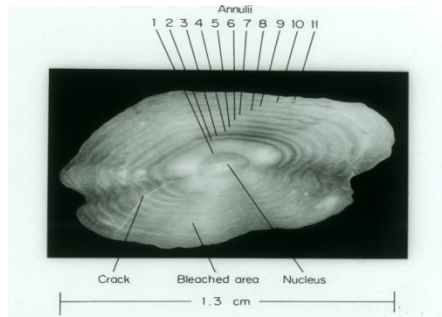


Fig. 1. $\Delta^{14}\text{C}$ (± 1 sd) of *Pagrus auratus* otolith aragonite from New Zealand over the time period 1918 to 1990. $\Delta^{14}\text{C}$ measurements from hermatypic corals sampled in Fiji and Heron Island, Australia are presented for comparison [5,8].



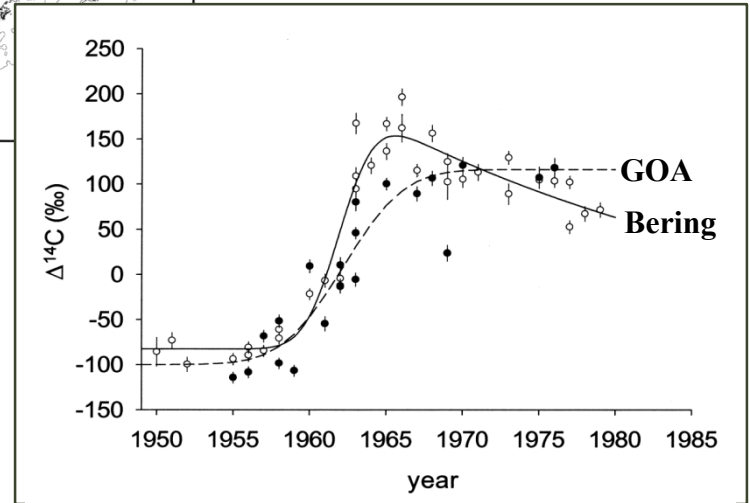
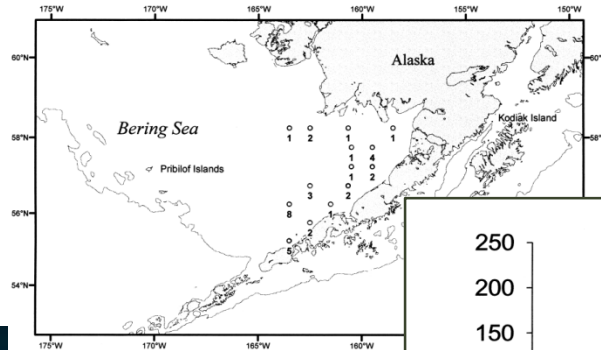
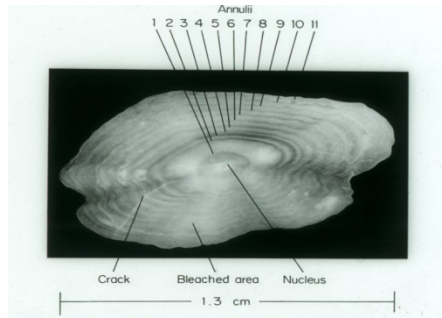
Curiouser and curiouser

The Otolith Connection:



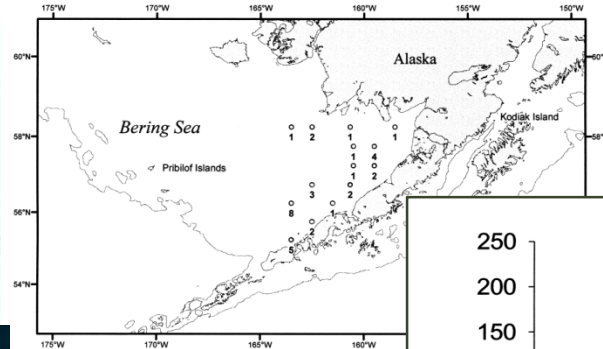
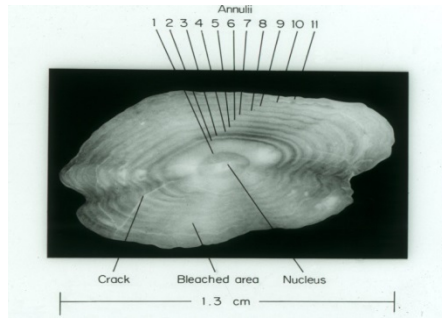
Curiouser and curiouser

The Otolith Connection:

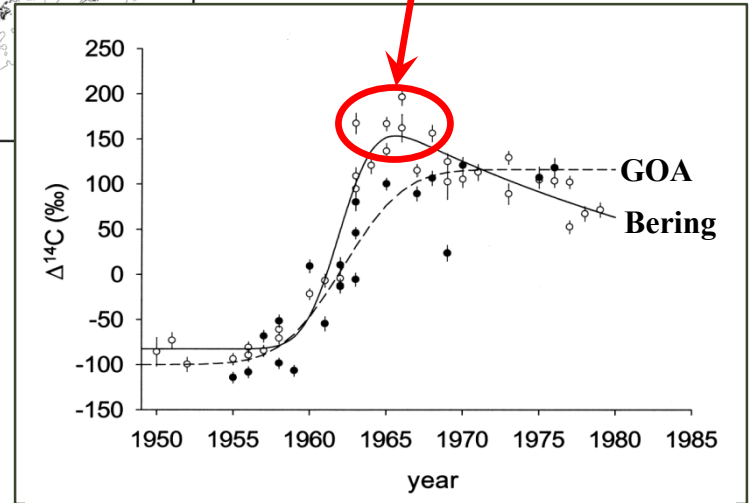


Curiouser and curiouser

The Otolith Connection:

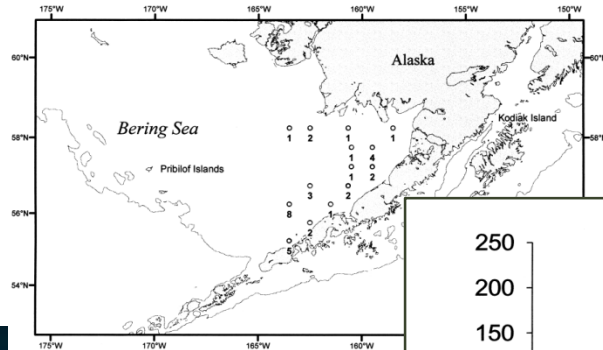
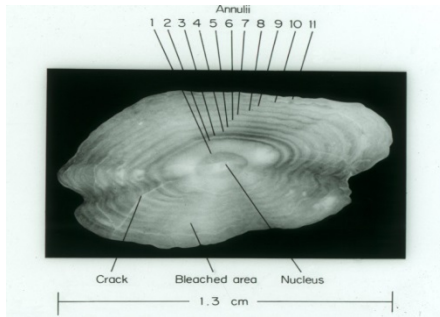


The Bristol Bay nursery showed a high-radiocarbon signature...

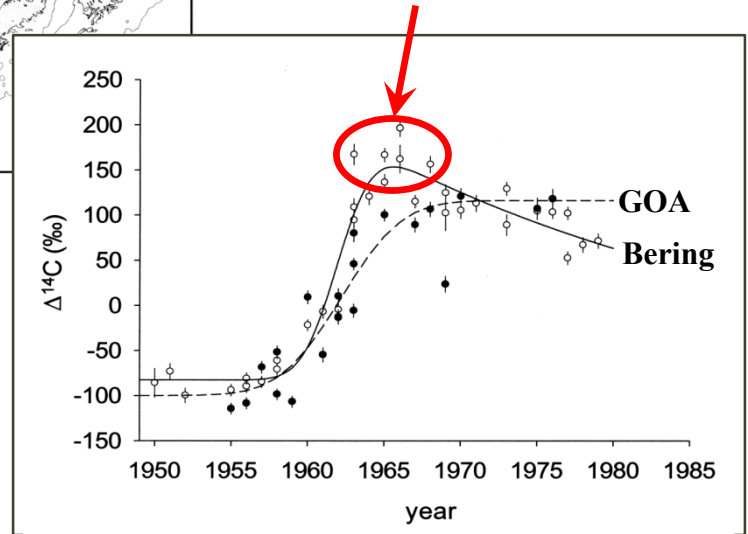


Curiouser and curiouser

The Otolith Connection:

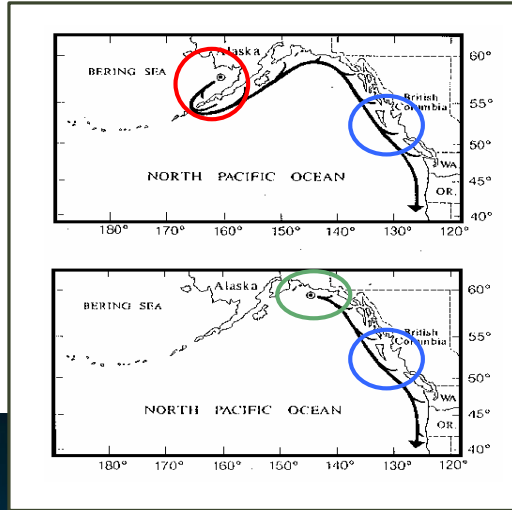
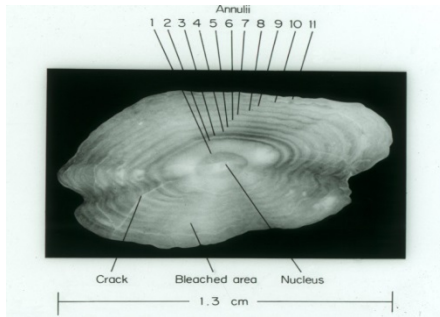


*The Bristol Bay nursery showed a **high-radiocarbon signature**, that was absent in EBS adults*

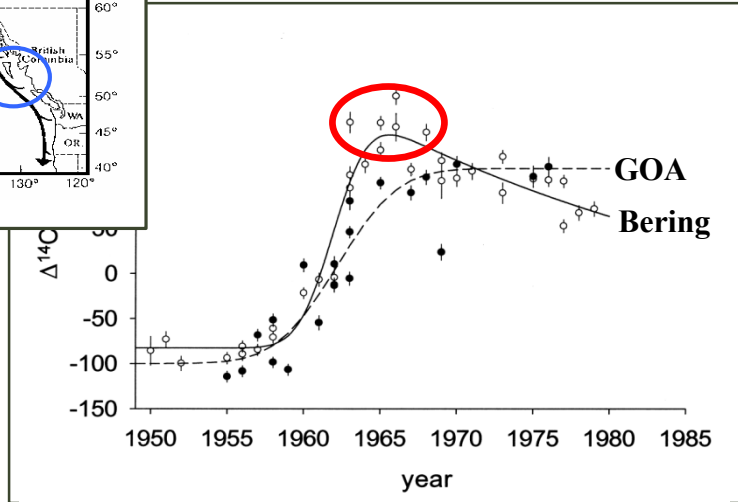


Curiouser and curiouser

The Otolith Connection:

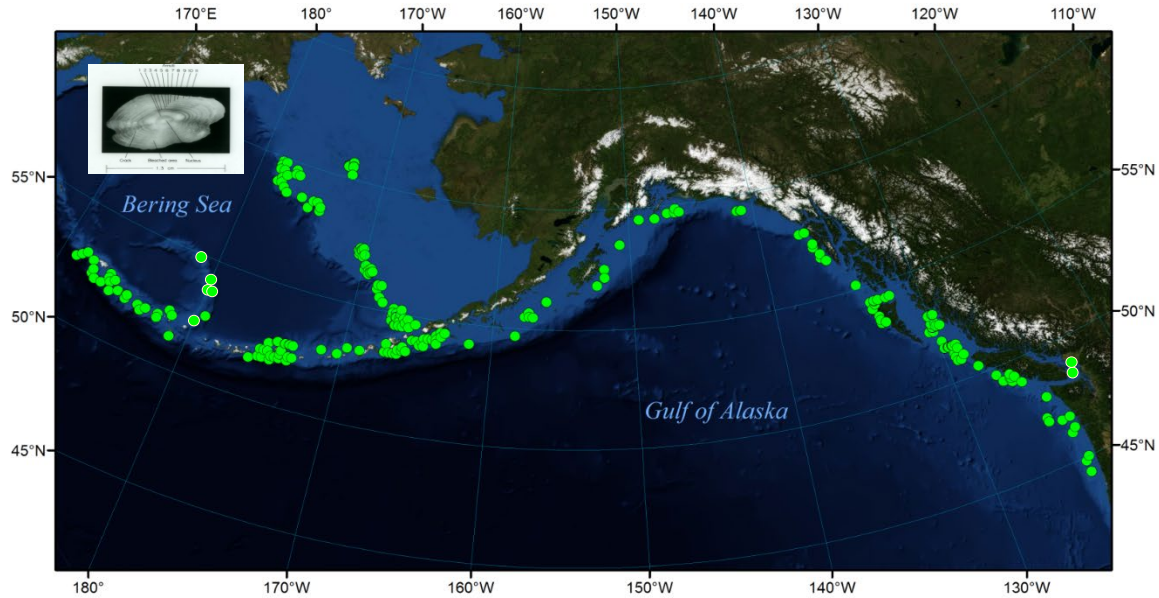


Is Bristol Bay predominantly contributing to Gulf of Alaska recruitment?



Curiouser and curiouser

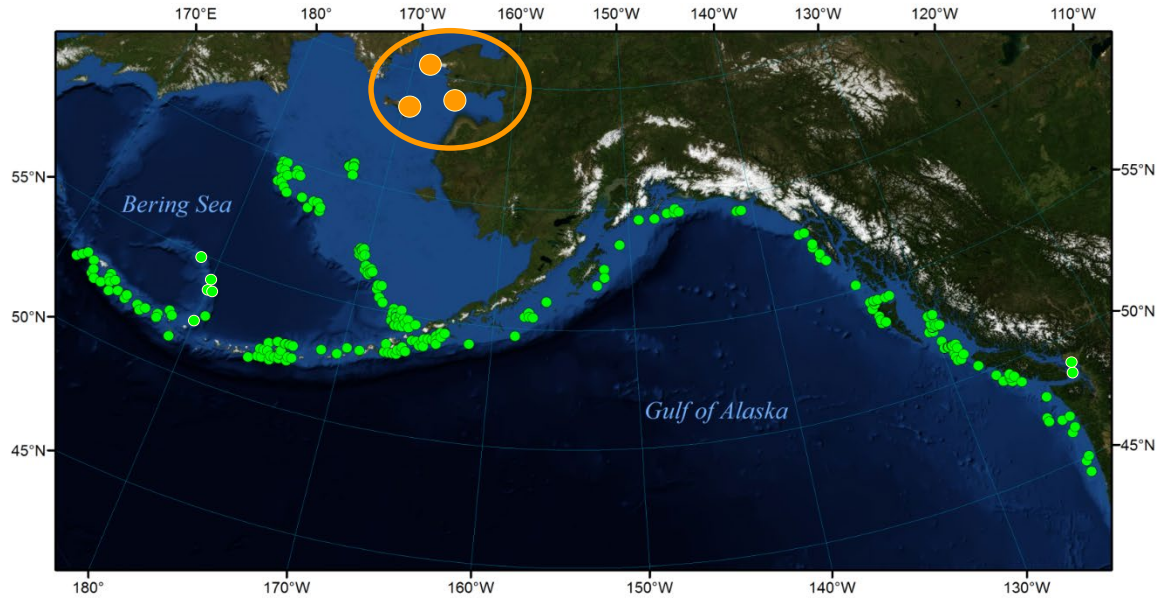
The Otolith Connection: does this imply a *western origin* for EBS Pacific halibut?



Curiouser and curiouser

The Otolith Connection: does this imply a *western origin* for EBS Pacific halibut?

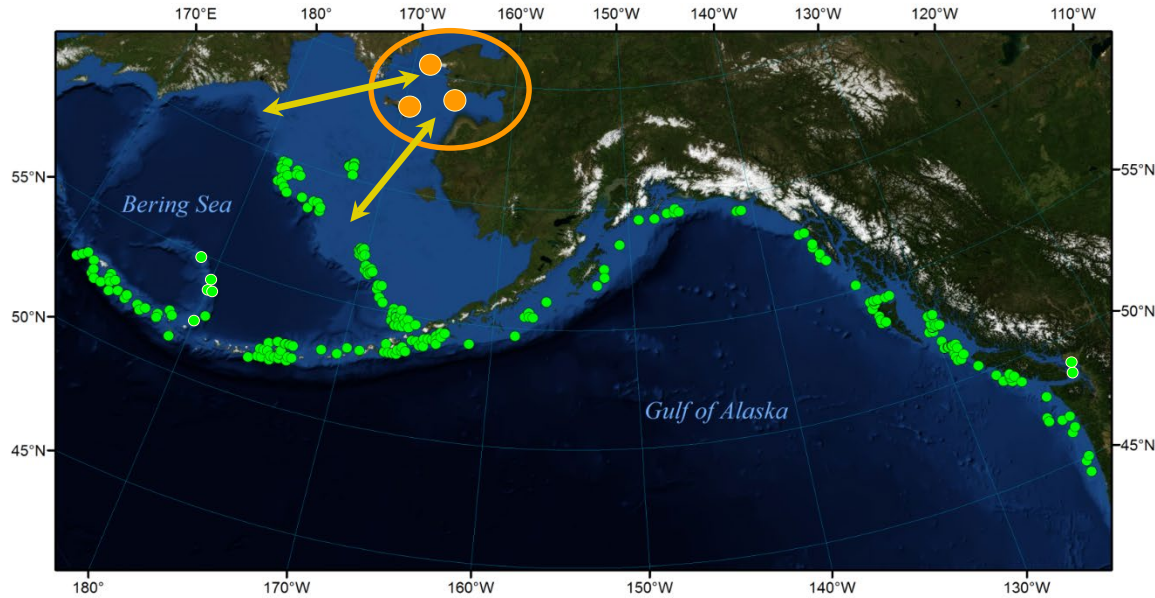
- Ongoing tagging is focused on the Northern Bering Sea shelf



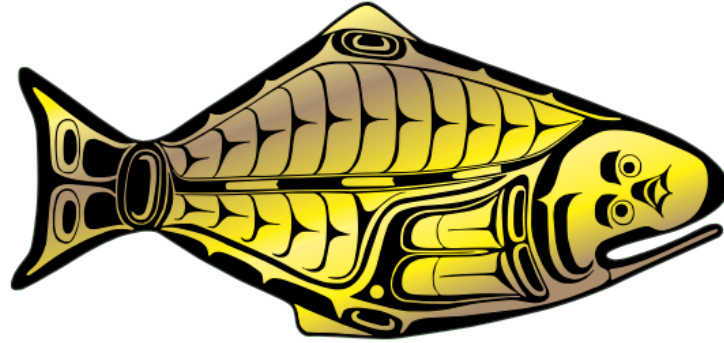
Curiouser and curiouser

The Otolith Connection: does this imply a *western origin* for EBS Pacific halibut?

- Ongoing tagging is focused on the Northern Bering Sea shelf



INTERNATIONAL PACIFIC



HALIBUT COMMISSION

