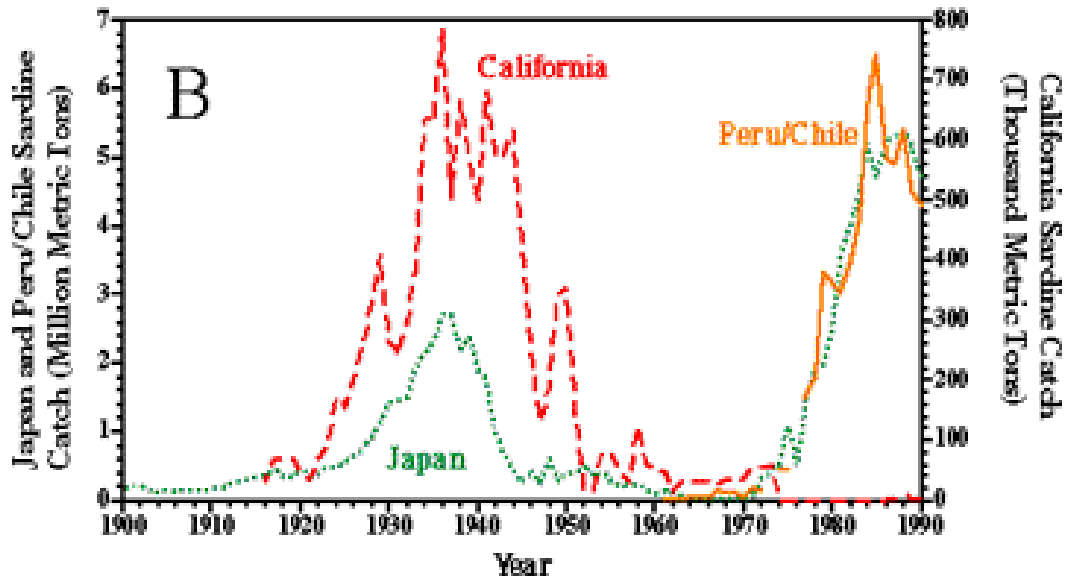


# Propagation of ecological anomalies from the western to eastern North Pacific in a global earth-system model

Ryan R. Rykaczewski

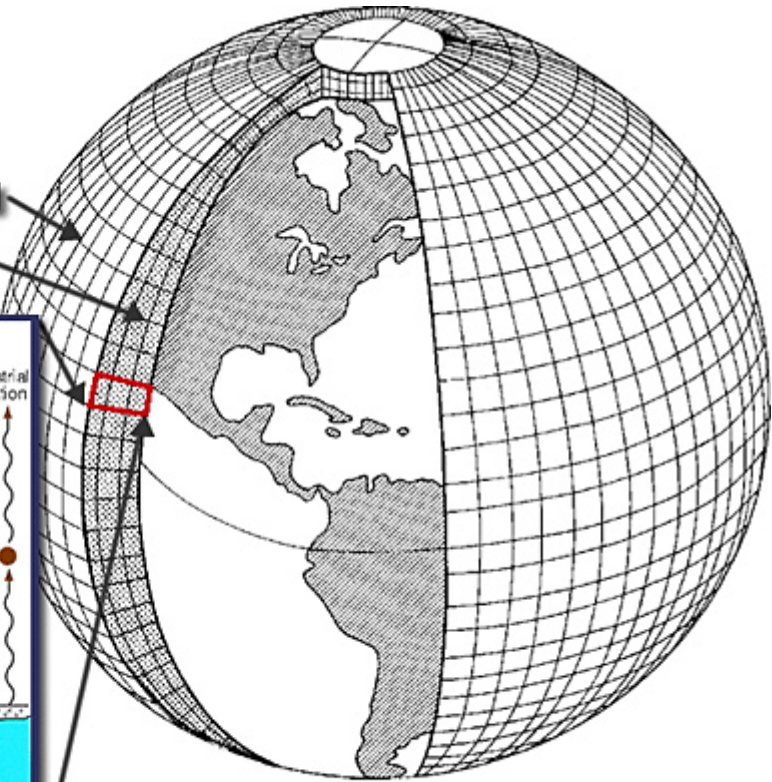
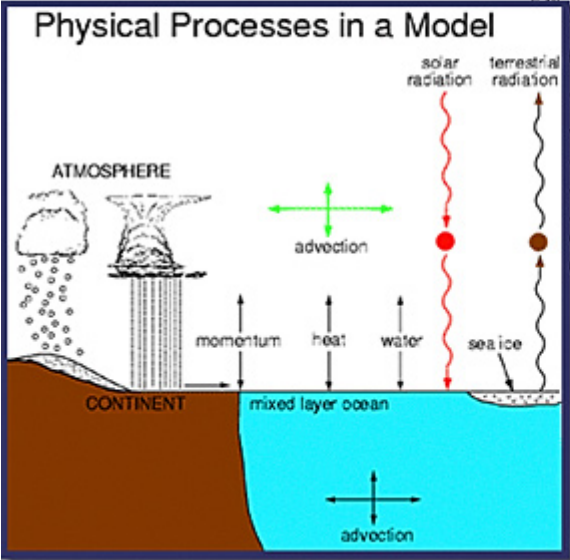
University Corporation for Atmospheric Research  
NOAA - Geophysical Fluid Dynamics Laboratory



# Schematic for Global Atmospheric Model

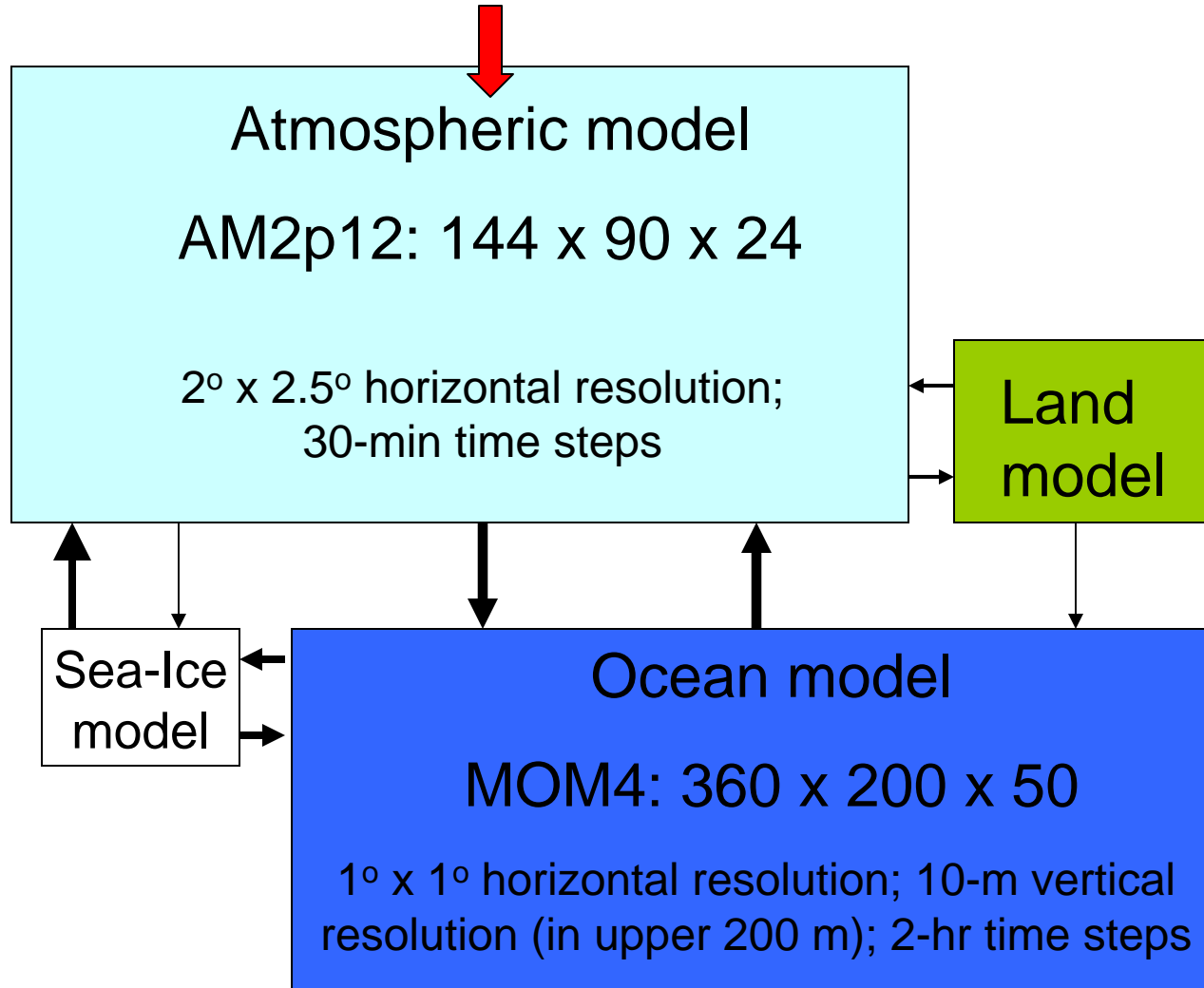
Horizontal Grid (latitude - longitude)

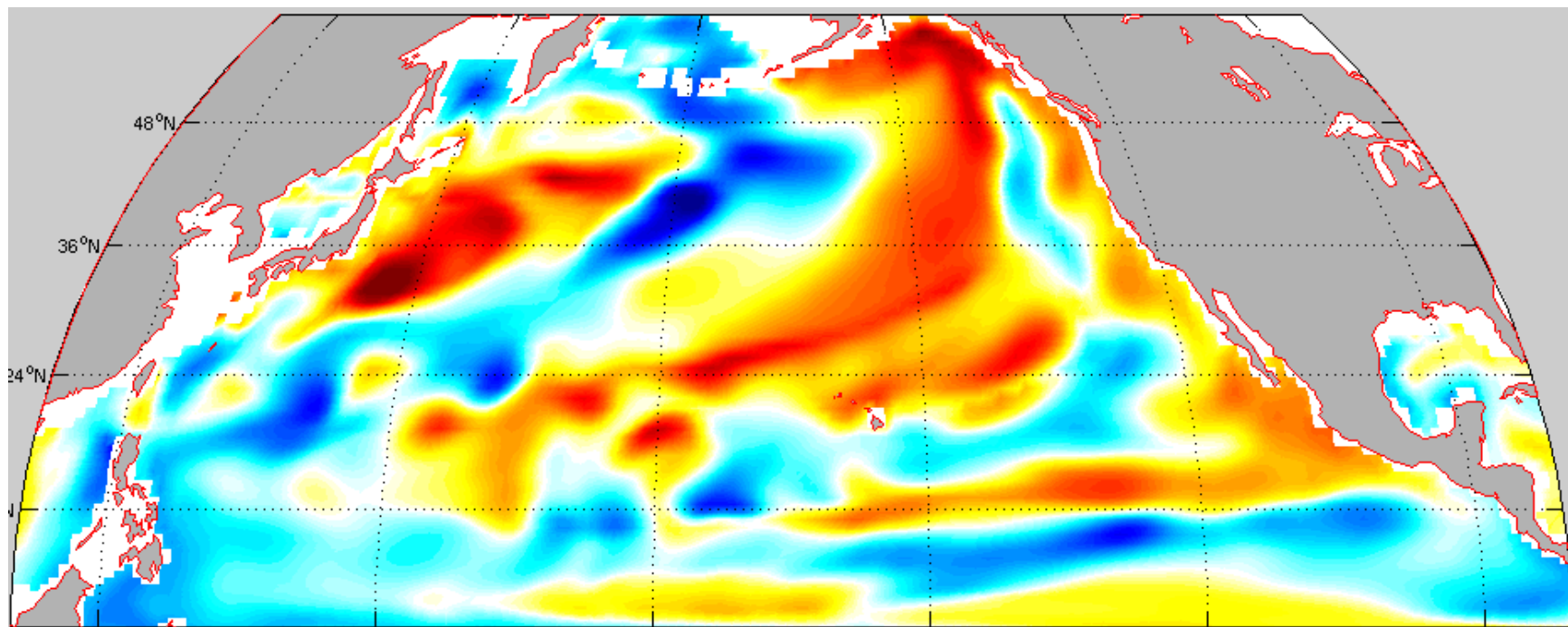
Vertical Grid (height or pressure)

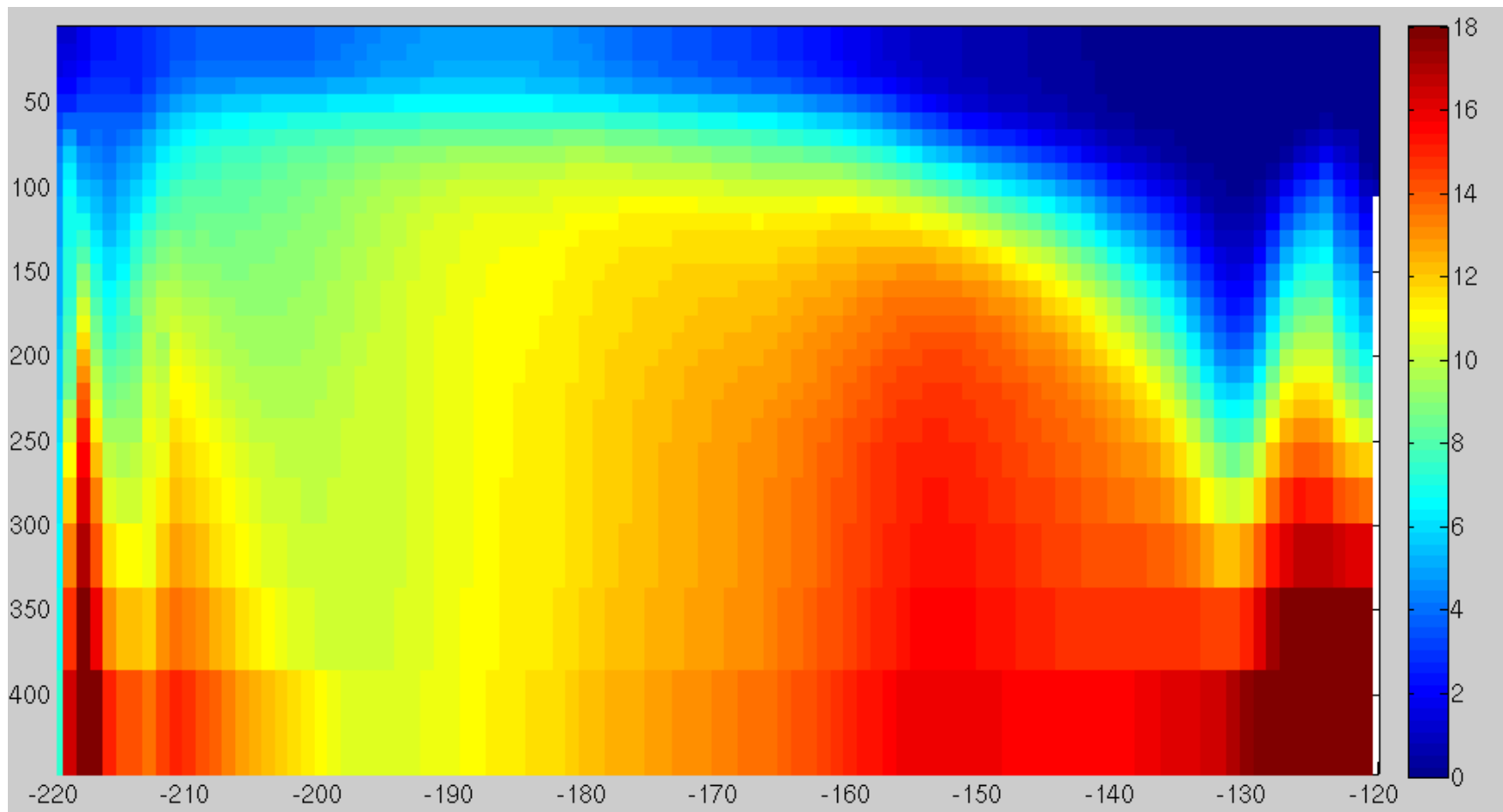


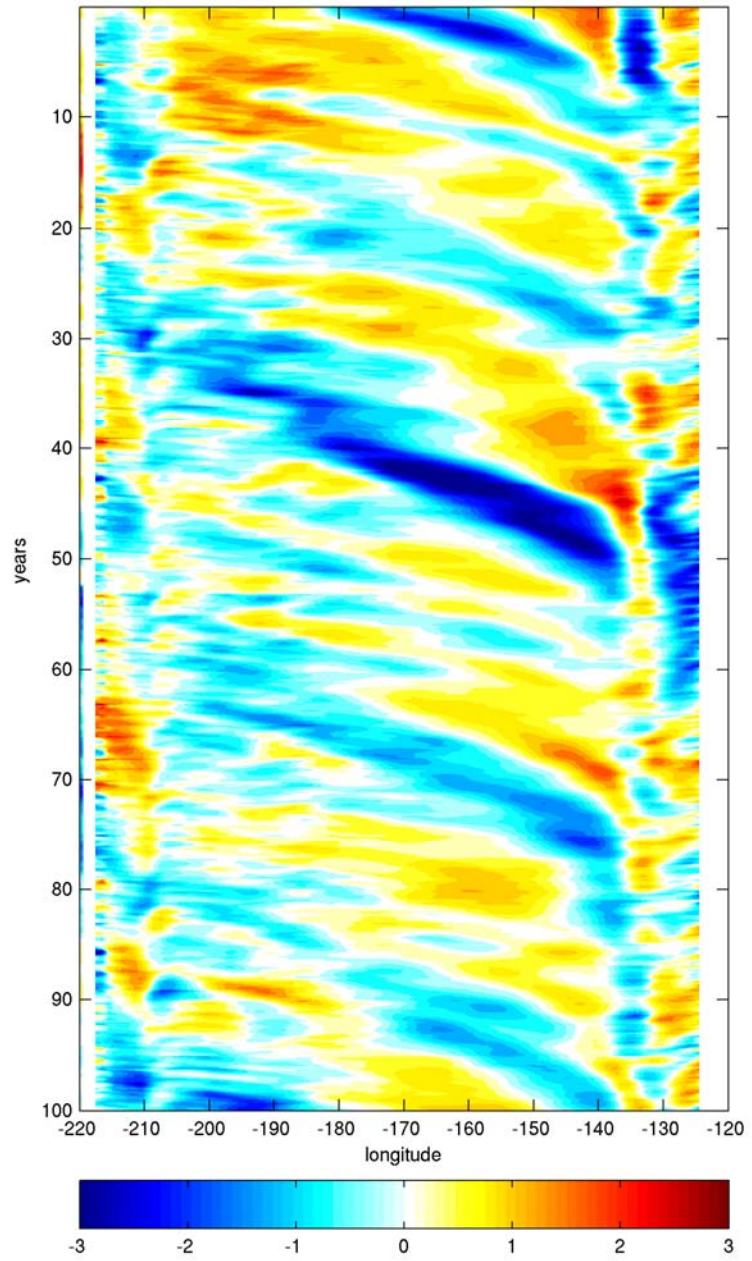
# CM2.1: GFDL Coupled Climate Model

greenhouse-gas + natural aerosol radiative forcing









0 years prior

