

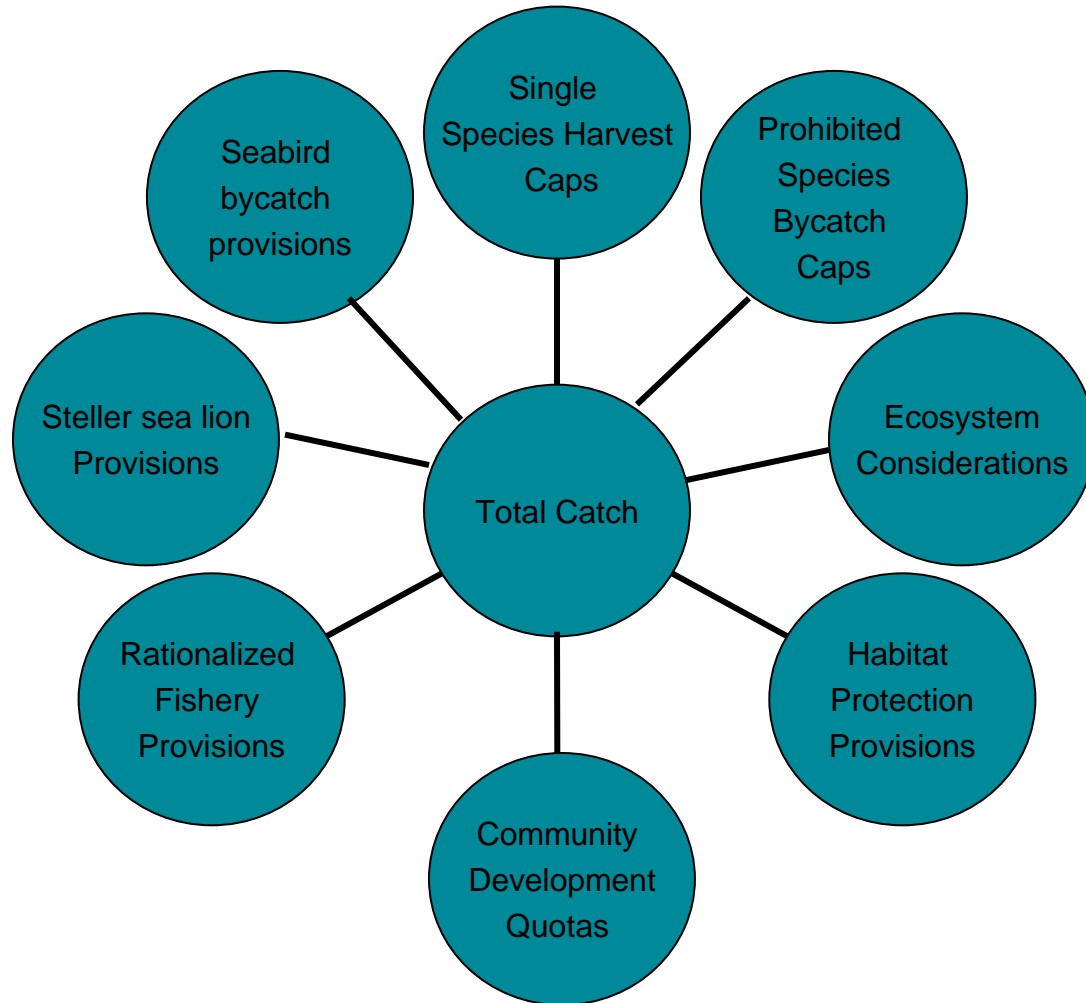


**NOAA
FISHERIES**

Projecting future status and trends of commercial fish and fisheries under shifting management strategies and climate change

Anne Hollowed
Alaska Fisheries Science Center

Multi-species, Multi-fishery, Multi-Sector, Multi-Objective Management





**NOAA
FISHERIES**

North Pacific Fishery Management Council Ecosystem Approach to Management

- ✓ *Prevent Overfishing – Annual Catch Limits*
- ✓ *Promote Sustainable Fisheries and Communities – science based guidelines*
- ✓ *Preserve Food Web – Weak stock management*
- ✓ *Manage Incidental Catch and Reduce Bycatch and Waste*
- ✓ *Avoid Impacts to Seabirds and Marine Mammals*
- ✓ *Reduce and Avoid Impacts to Habitat*
- ✓ *Promote Equitable and Efficient Use of Fishery Resources*
- ✓ *Increase Alaska Native Consultation*
- ✓ *Improve Data Quality, Monitoring and Enforcement*



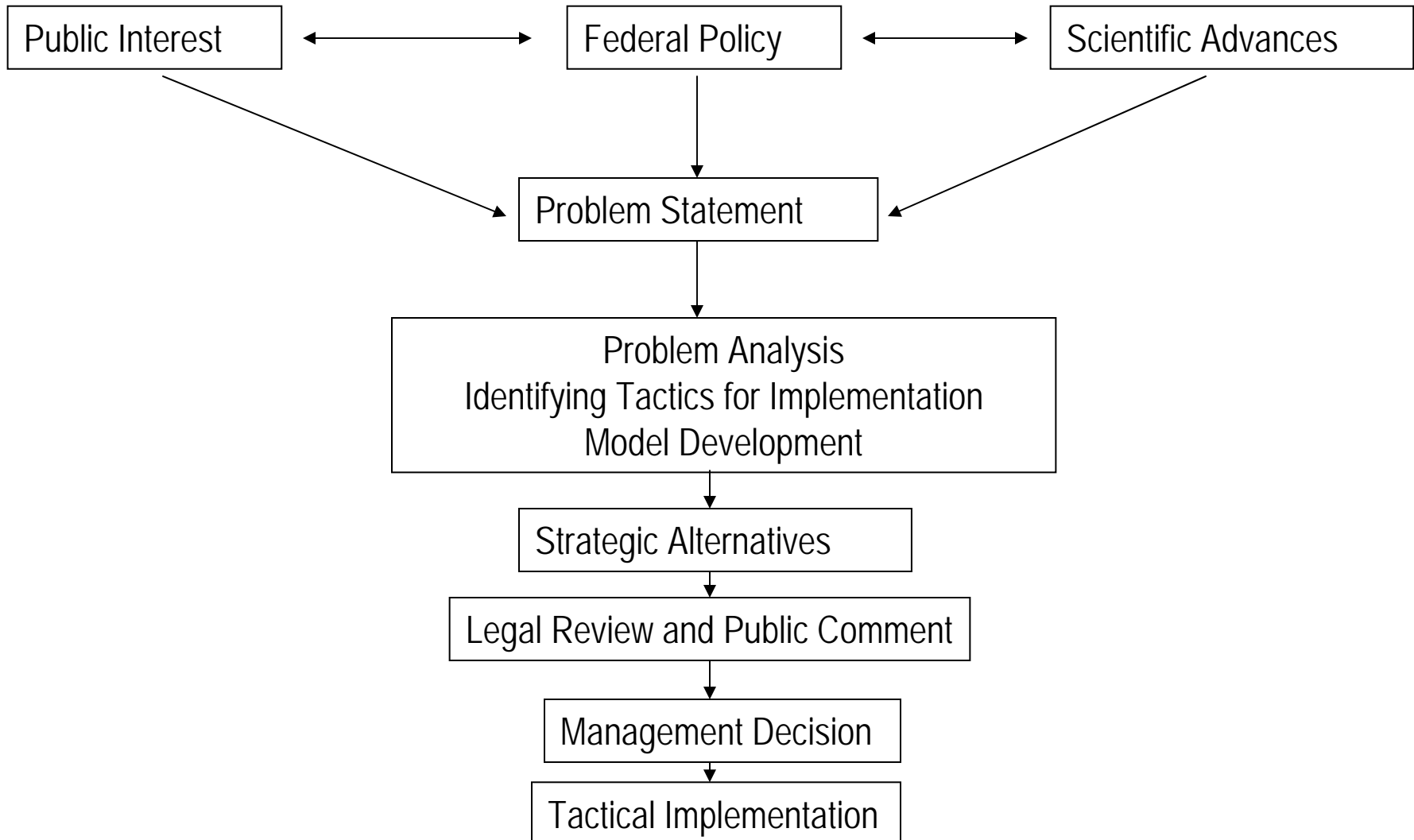
NOAA
FISHERIES

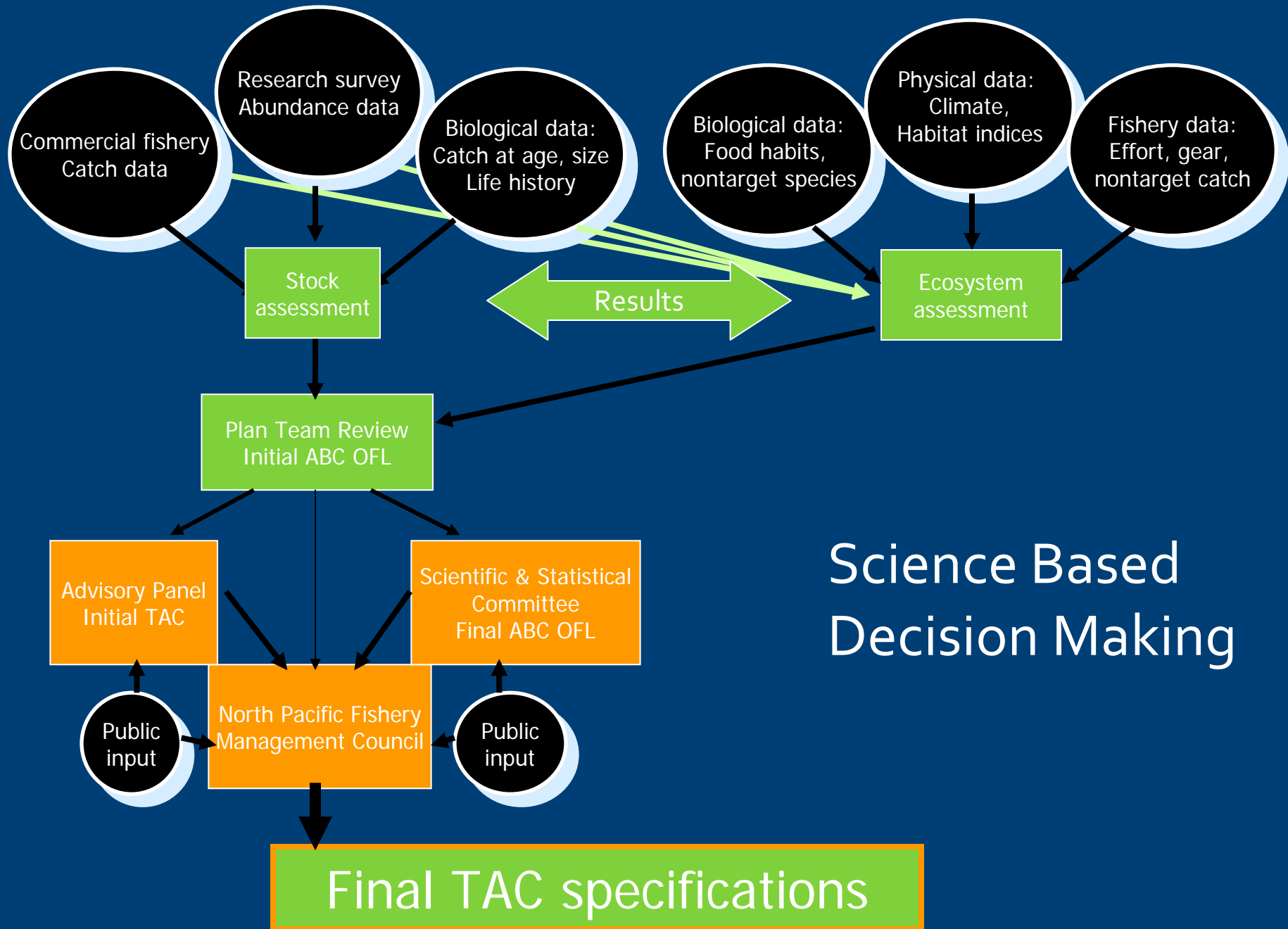
Elements of Successful Co-management

- ✓ Community involvement in decision making
- ✓ Community development quota - CDQ
- ✓ Catch shares - Cooperatives or Individual Transferable Quotas
- ✓ Marine spatial plan (protected areas)
 - ✓ prevent gear conflicts
 - ✓ limit incidental catch of unintended species,
 - ✓ mitigate species interactions

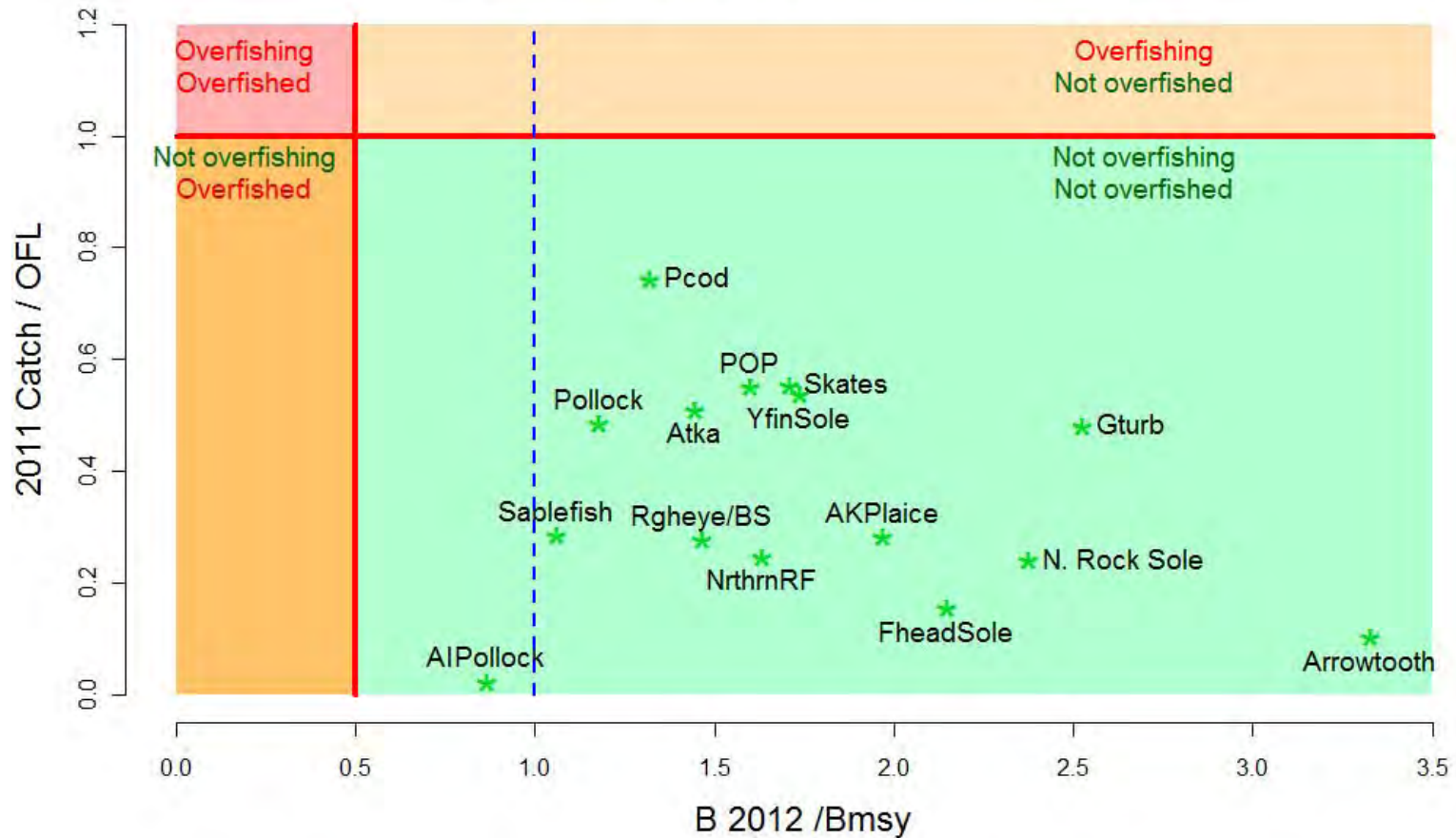
Nicolas L. Gutierrez, Ray Hilborn & Omar Defeo. 2010. Nature

Public Decision Making Process: Based on Best Available Science



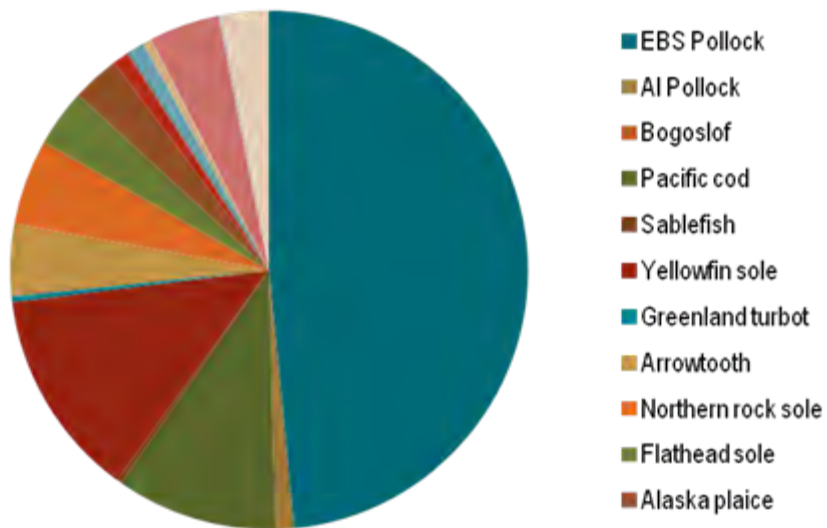


Bering Sea and Aleutian Islands

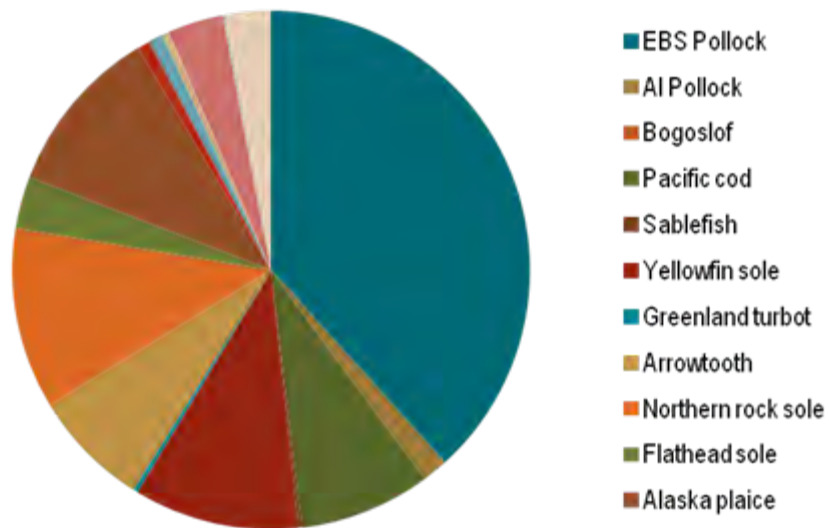


- Catch accounting including non-targets, prohibited species, seabirds, other non-specified (e.g., forage fish)
- Buffer between ABC and OFL
- 2 million ton overall cap
- Retention cap on forage fish
- Peer Review
- Essential Fish Habitat – 5 year assessment and review

2010 Total Allowable Catch



2010 Acceptable Biological Catch

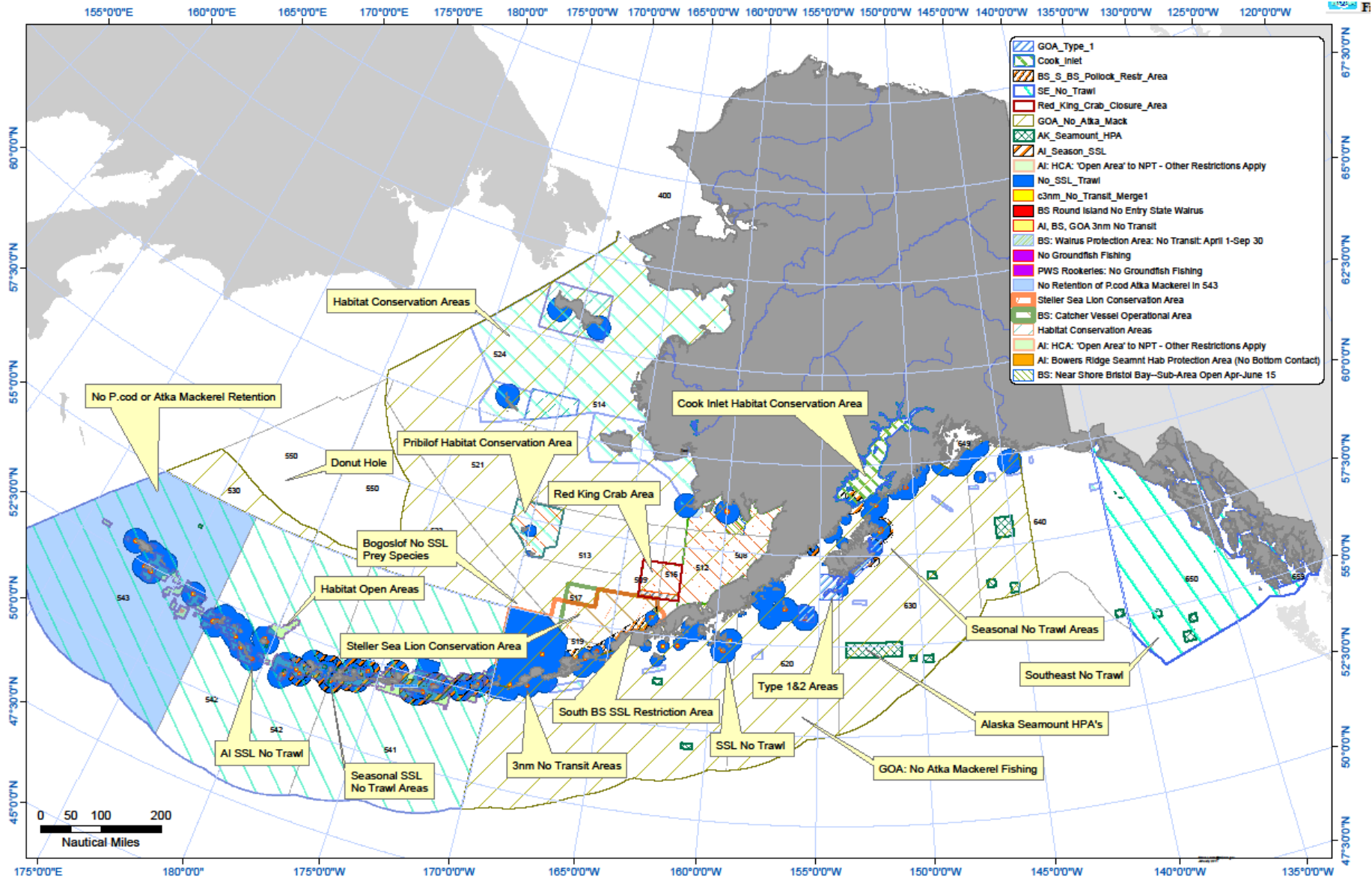


Prohibited species Management

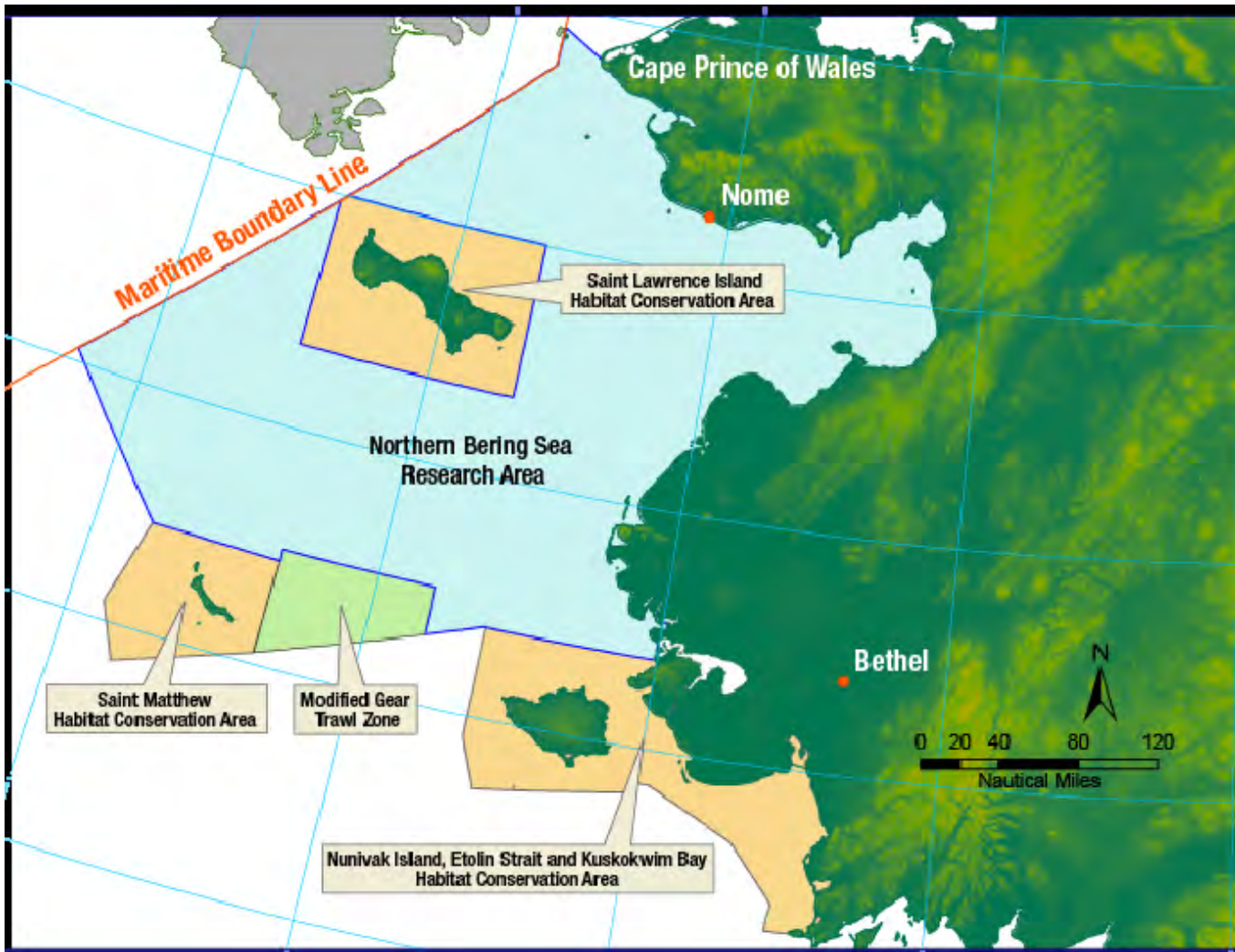
- Prohibited species caps:
P. halibut, BSAI crab, P. salmon
(especially Chinook and Chum), P.
herring
- Gear/Area closures
 - Bristol Bay Red King Crab
Conservation Area
- Chinook salmon:
 - Hard cap + incentive
programs
- Chum salmon: TBD



Habitat Protection

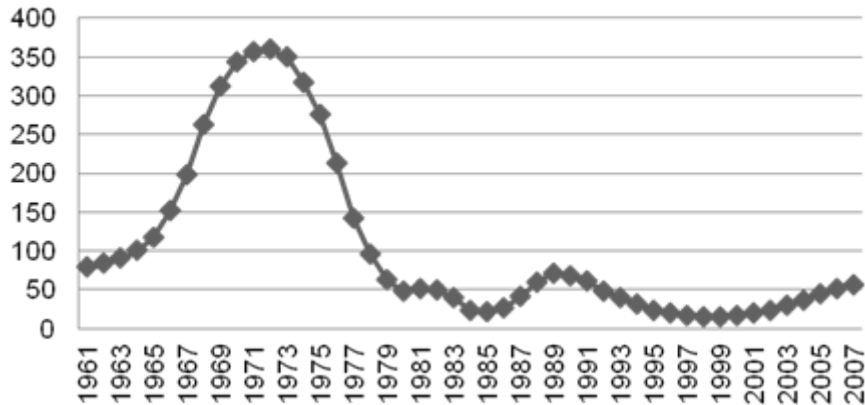


Northern Bering Sea Research Area

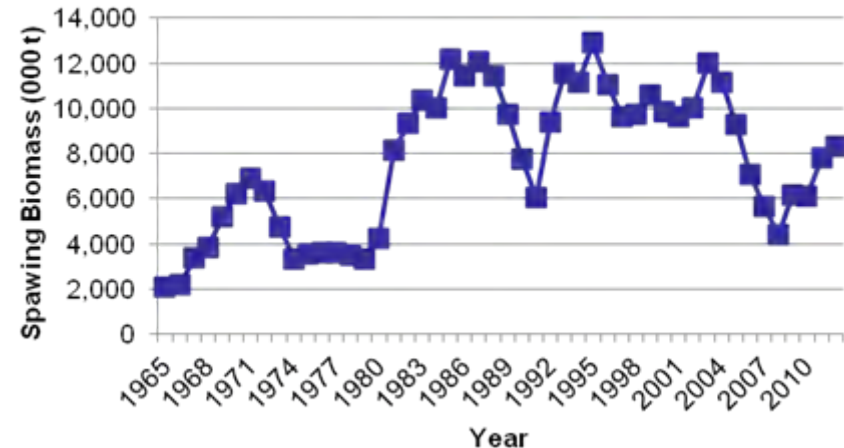


Accounting for shifts in environmental conditions: Detecting breakpoints vs risk assessment

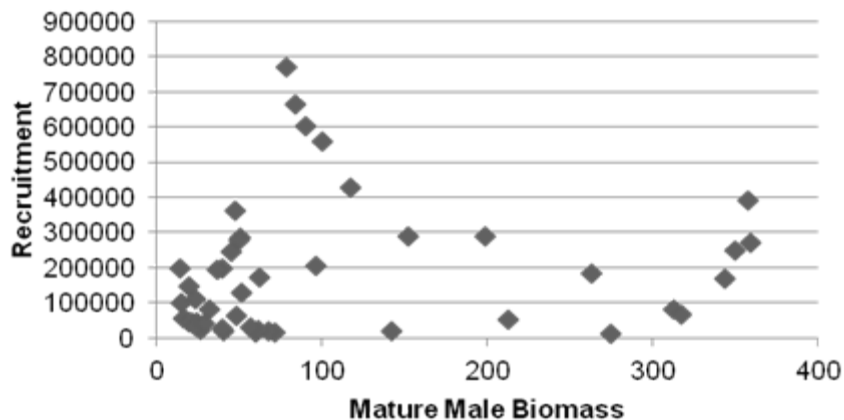
Tanner crab



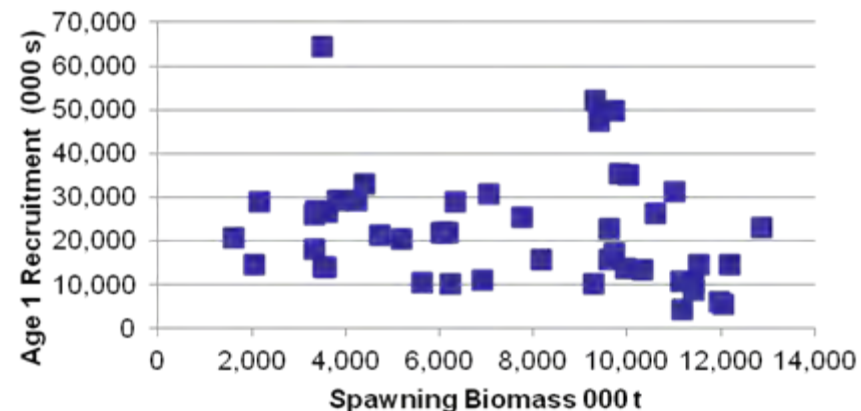
BS Walleye Pollock



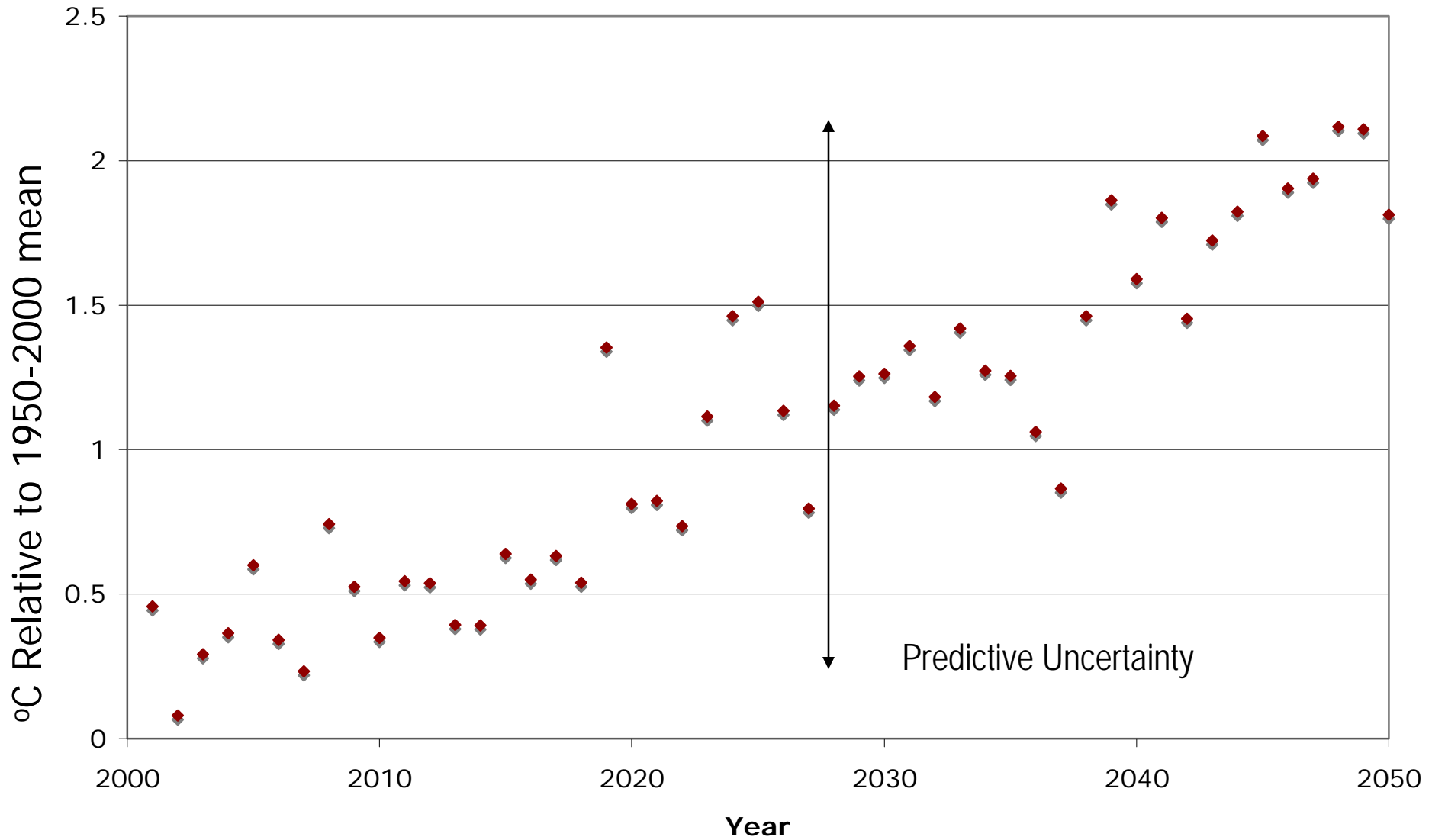
Fertilization Years 1961-2007



BS Walleye Pollock



SE Bering Sea Summer SST (JAS)





NOAA
FISHERIES

Possible Responses of Living Marine Resources to Climate or Fishing

Shifting zoogeographic distributions

Phenology (match-mis-match)

Changing vital rates (growth, mortality, maturity schedules)

Adaptive flexibility (genetic diversity, flexibility in life history
(spawning distribution, food habits)

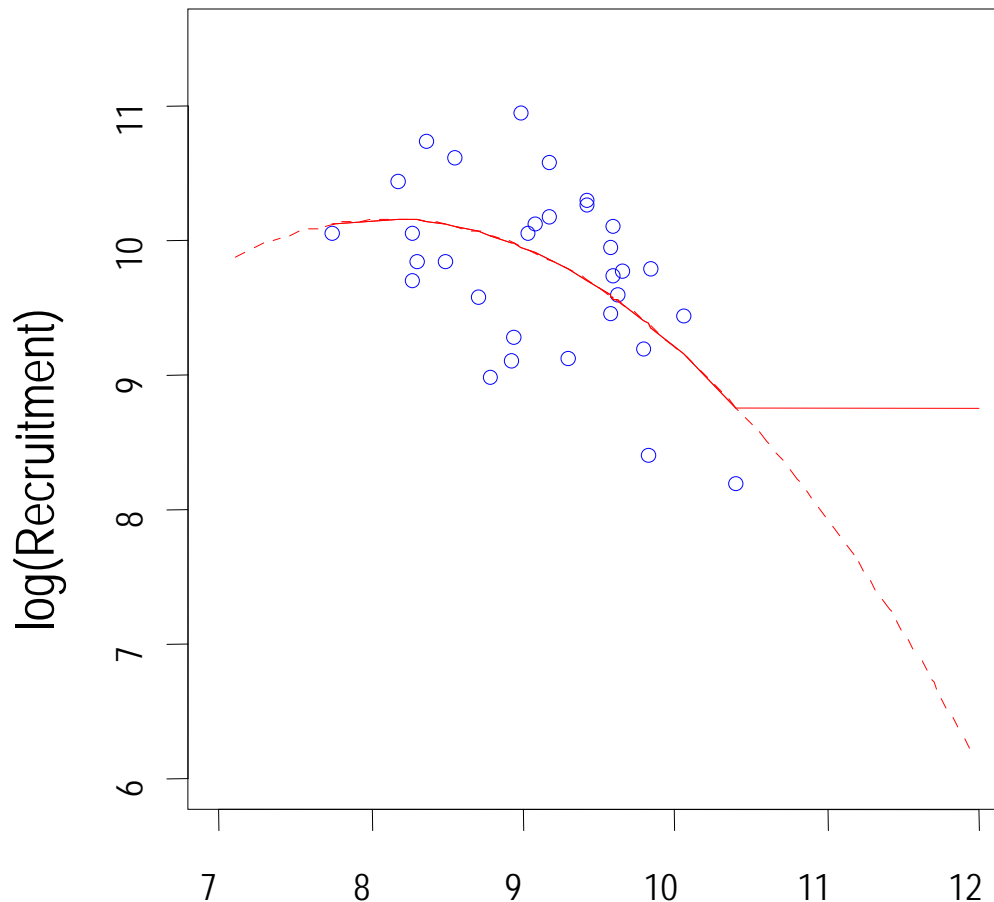
Species interactions (predator-prey, competition)

Structural changes to foodweb

Dominance switching

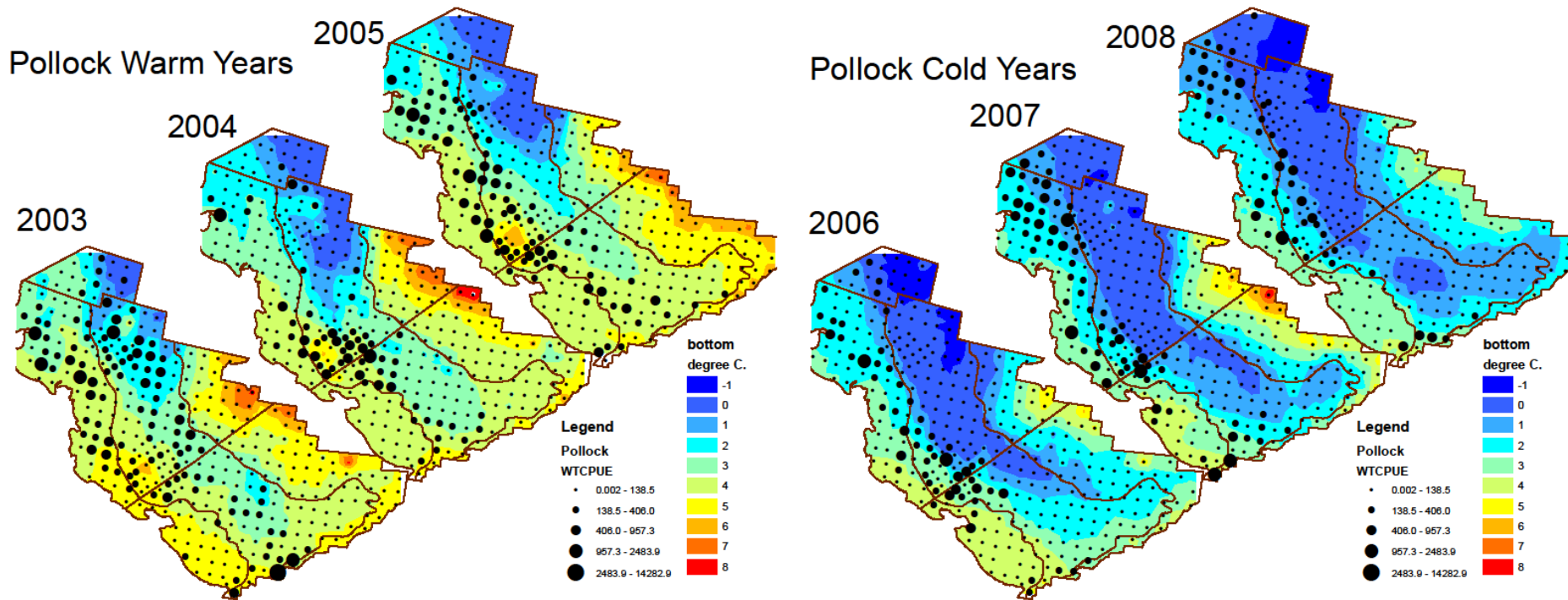
EBS pollock recruitment study

Retrospective study to Identify mechanisms



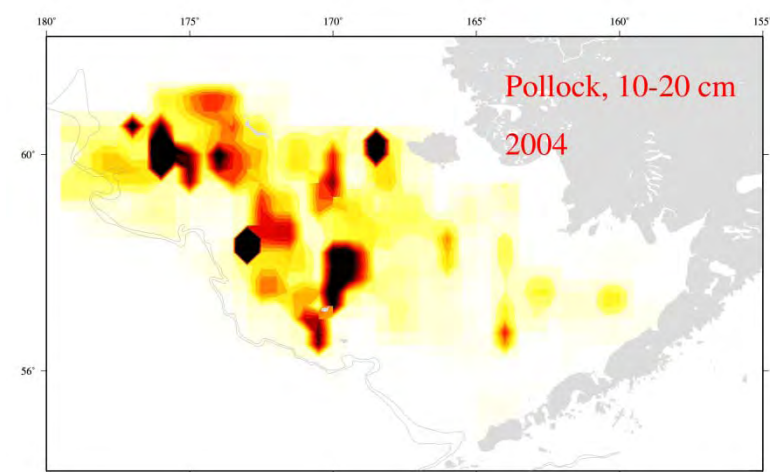
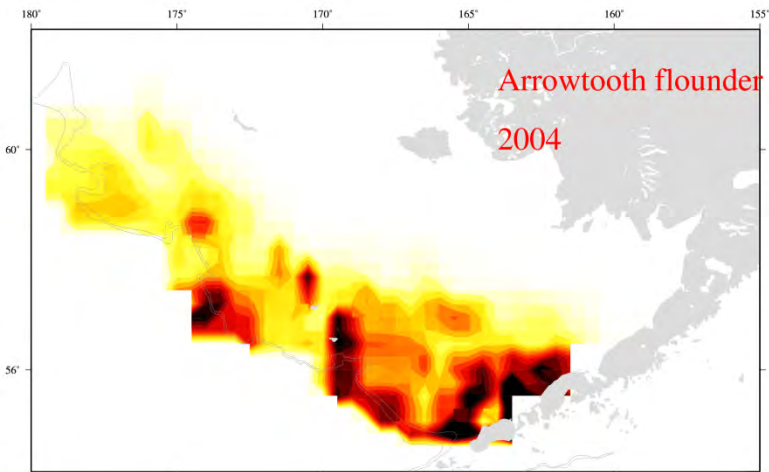
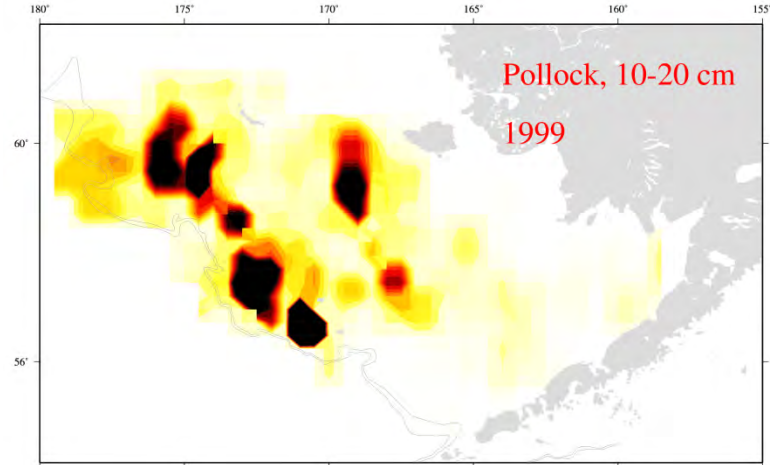
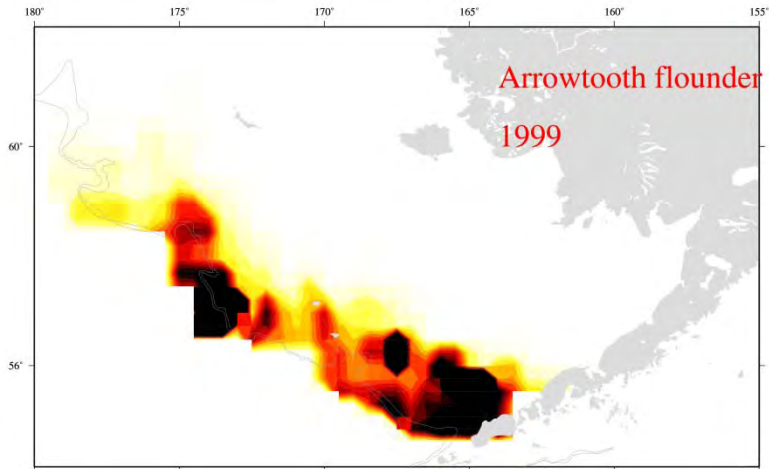
Cold pool extent affects location of zoogeographic provinces

Pollock, arrowtooth flounder, and cod all appear to be pushed to the outer shelf as the spatial extent of the cold pool expands.



Bottom trawl survey: Lauth

Arrowtooth flounder avoid the cold pool Age 1 walleye pollock (mostly) do not avoid the cold pool





**NOAA
FISHERIES**

Hypothetical Scenario - EBS

- Reduced cold pool
- Reduced lipid rich zooplankton
- Expanded habitat for walleye pollock
- Increased overlap of predators and age 1 pollock
- Reduced abundance of pollock
 - Increase flatfish TAC
- Increased bottom trawling
 - Increased fuel costs
- Fishers Choice?



NOAA
FISHERIES

Challenges

- Catch shares limit flexibility in re-tooling vessels to adapt to shifting species composition and abundance.
 - E.g., Halibut PSC cap may limit expansion of flatfish fisheries.
- Fixed closed areas limit flexibility to adapt to shifting fish distributions.
- Risk adverse harvest guidelines account for declining stock size but definitions of sustainable targets in a changing climate may be difficult.
- Mechanisms underlying distribution and abundance of fish in changing climate.



NOAA
FISHERIES

Future Research Needs

- Prevent overfishing and rebuilding overfished stocks.
 - Maintain and expand catch accounting, surveys, life history studies (aging, growth)
- Development of decision theoretic approaches to time frames for biological responses
- Improved ecosystem monitoring to assess response to fishing and environment. Underpins management strategy evaluations.
- Fishers response (fishers choice models), global markets.
- Interdisciplinary research teams
- Multiple model ensembles needed.