

The Northwest Association of Networked Ocean Observing Systems (NANOOS)

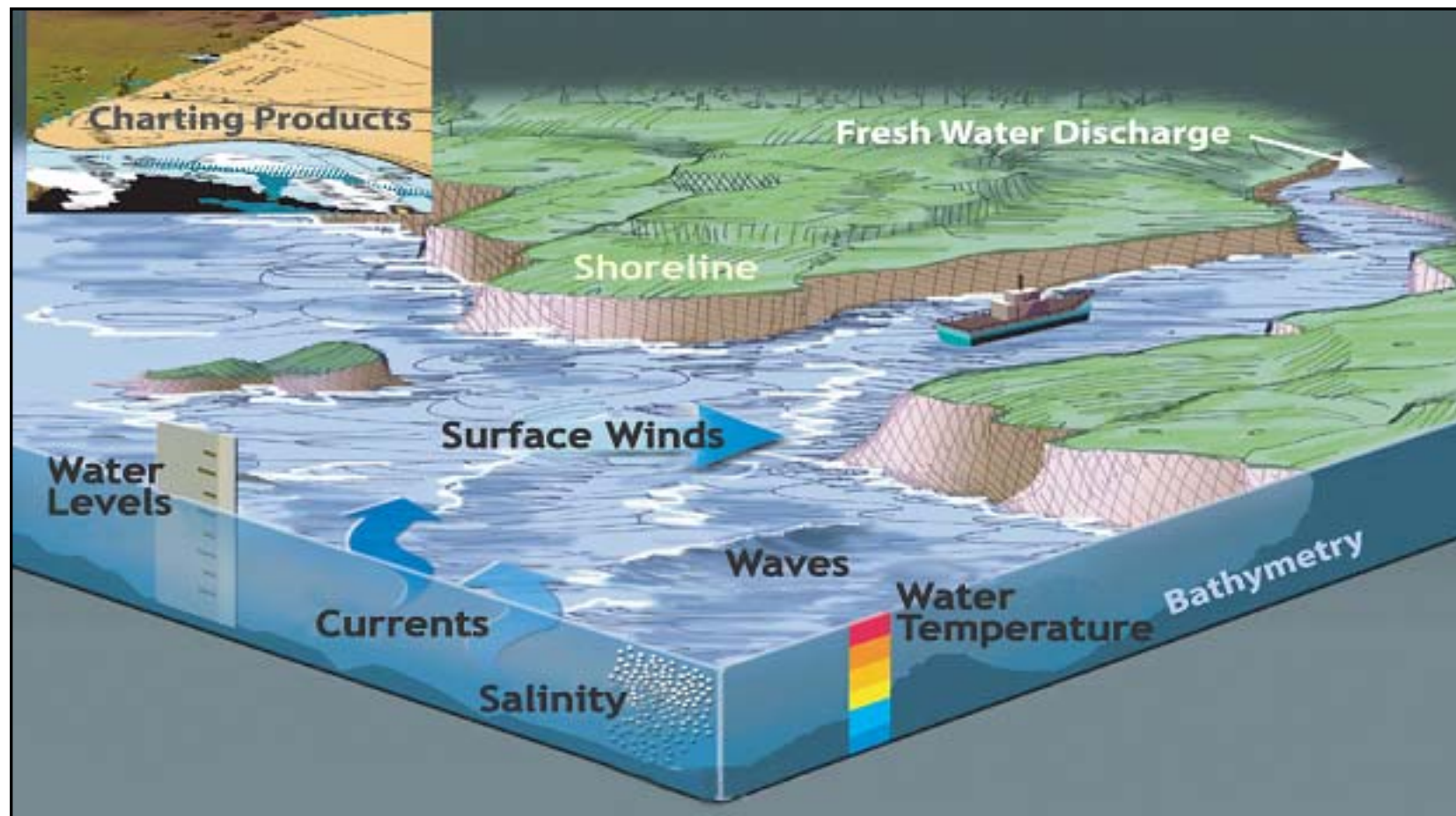
Jack A. Barth (Oregon State University)

Jan A. Newton (NANOOS Coordinator, University of Washington)

David Martin (NANOOS President, University of Washington)

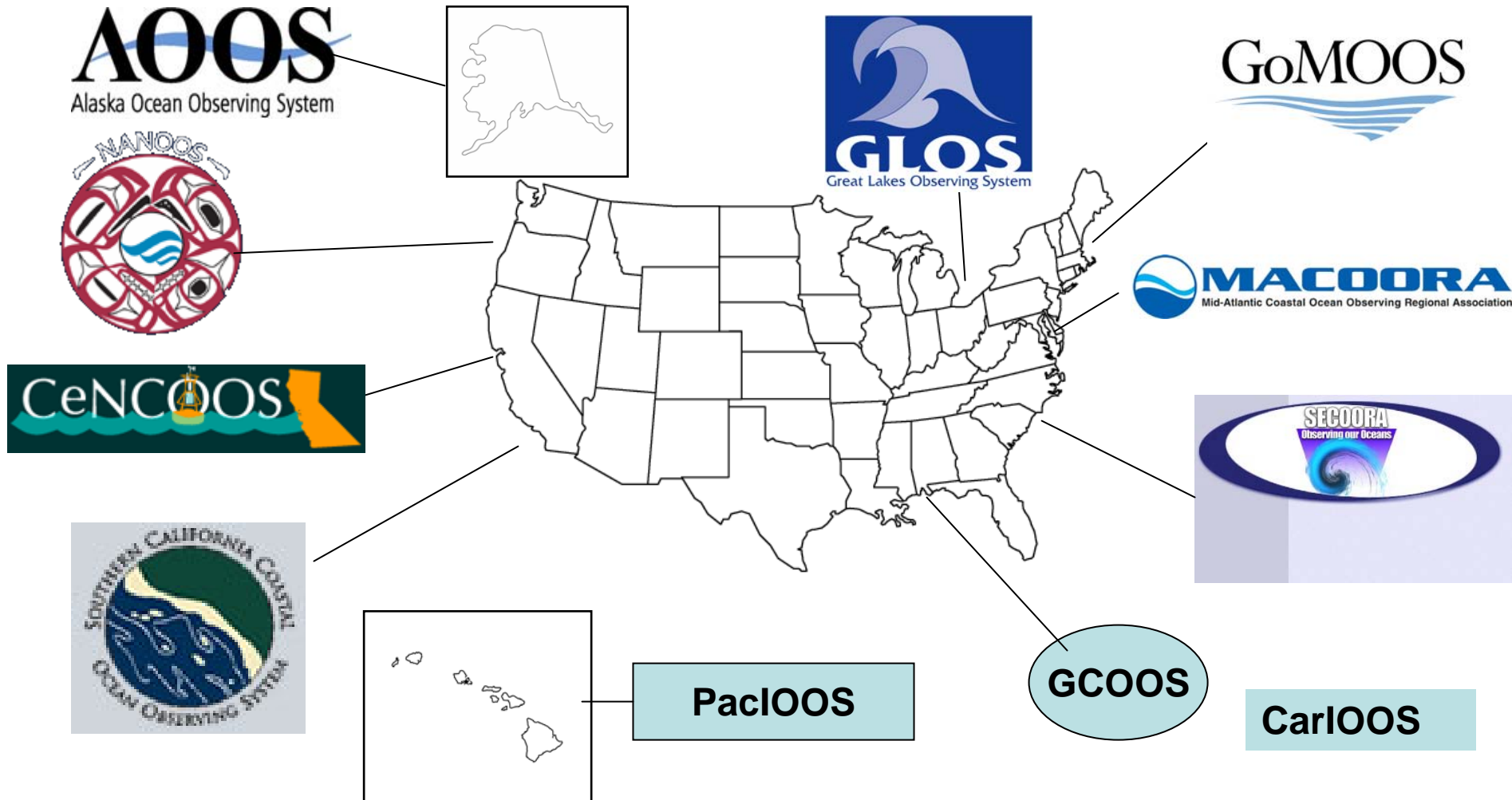
and NANOOS Colleagues

Fundamental Issue:



We are limited and poorly coordinated with respect to environmental data supporting fundamental societal needs

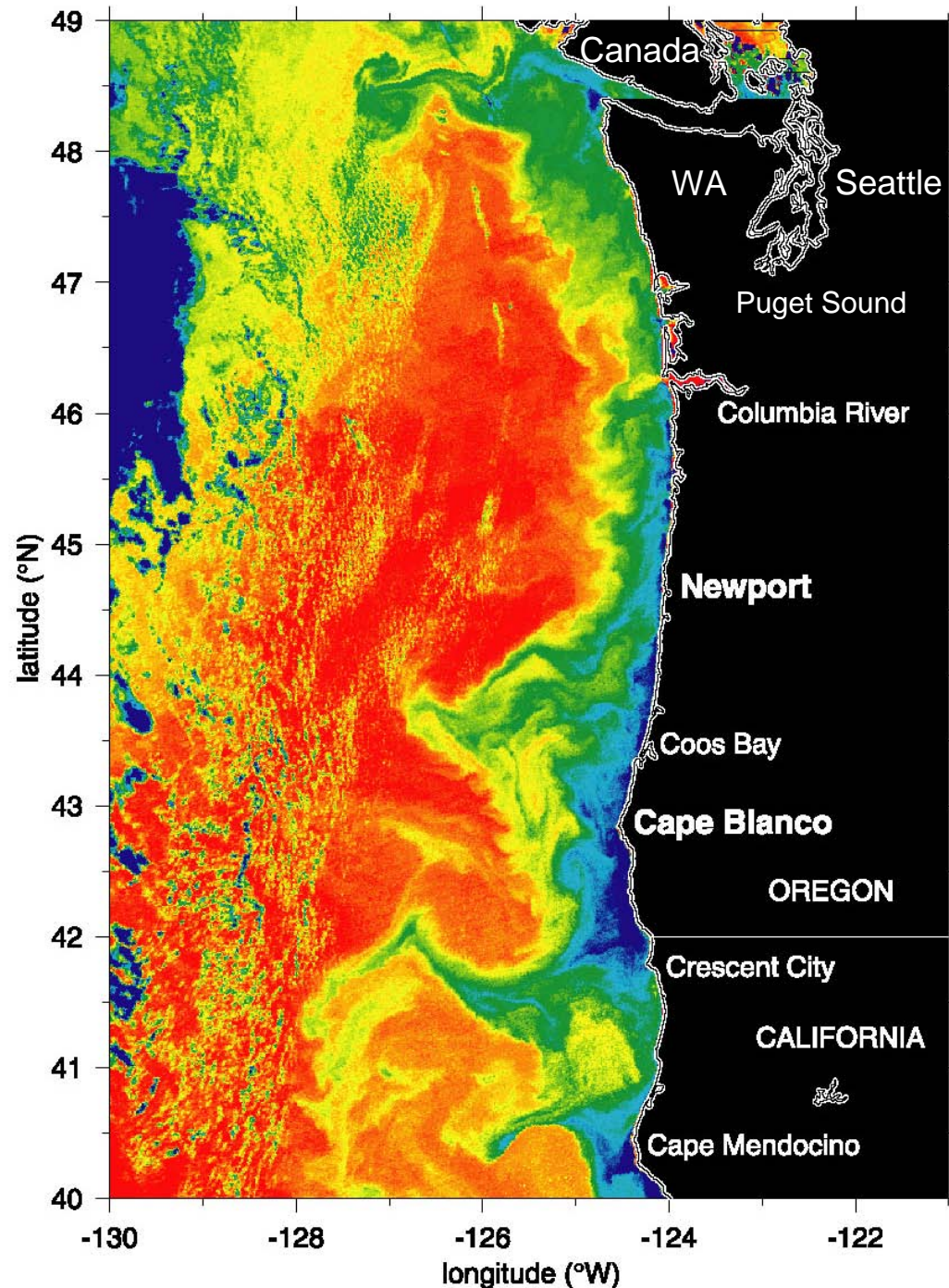
Diverse Needs Require a Regional Approach



Northwest Association Of Networked Ocean Observing Systems (NANOOS)



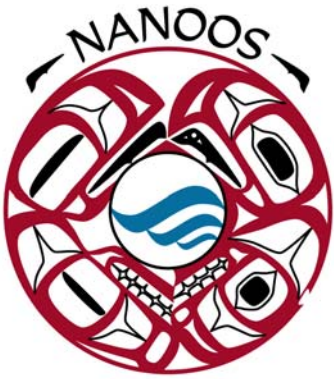
<http://www.nanoos.org>



A satellite map of the Pacific Northwest coastline, showing the dark blue ocean on the left and the green, mountainous land on the right. The coastline is irregular, with many inlets and bays. The land is covered in dense green vegetation, with some lighter brown areas indicating urban or cleared land. The ocean is a deep blue, with some lighter blue areas near the shore.

Pacific Northwest User Groups:

- Marine shipping and oil transport/spill remediation
- Search and rescue
- Shellfish fishery and aquaculture
- Marine recreation
- Natural resource/environmental management
- National and homeland security
- Finfish aquaculture
- Research institutions
- Education
- Commercial groundfishing
- Crab fishery



NANOOS Members

to date...

-
1. Ocean Inquiry Project
 2. Oregon Dept of Land Conservation & Development
 3. Surfrider Foundation
 4. The Boeing Company
 5. Oregon State University
 6. Puget Sound Action Team
 7. University of Washington
 8. WET Labs, Inc.
 9. Oregon Health and Science University
 10. Quileute Indian Tribe
 11. Oregon Dept of Geology and Mineral Industries
 12. Humboldt University
 13. Marine Exchange of Puget Sound
 14. Washington State Dept of Ecology
 15. Pacific Northwest National Laboratory
 16. Port of Newport



NGO



State/local Gov't



Industry



Academia/Research



Tribes



NANOOS Pilot Project

Pacific Northwest estuaries and shores



About
Contact us
FAQ

Estuaries

Shores

North Beach
Grayland Plains
Long Beach
Clatsop Plains
Rockaway

Observatories

CORIE
ORCA
PRISM
SSNERR
WDE

Help

Display

- ☐ Shore sites
- ☐ Forecasts

Go



NANOOS Pilot Marine Monitoring Components



PRISM: Puget Sound Regional Synthesis Model
Science • Education • Partners • Operations • Utilities

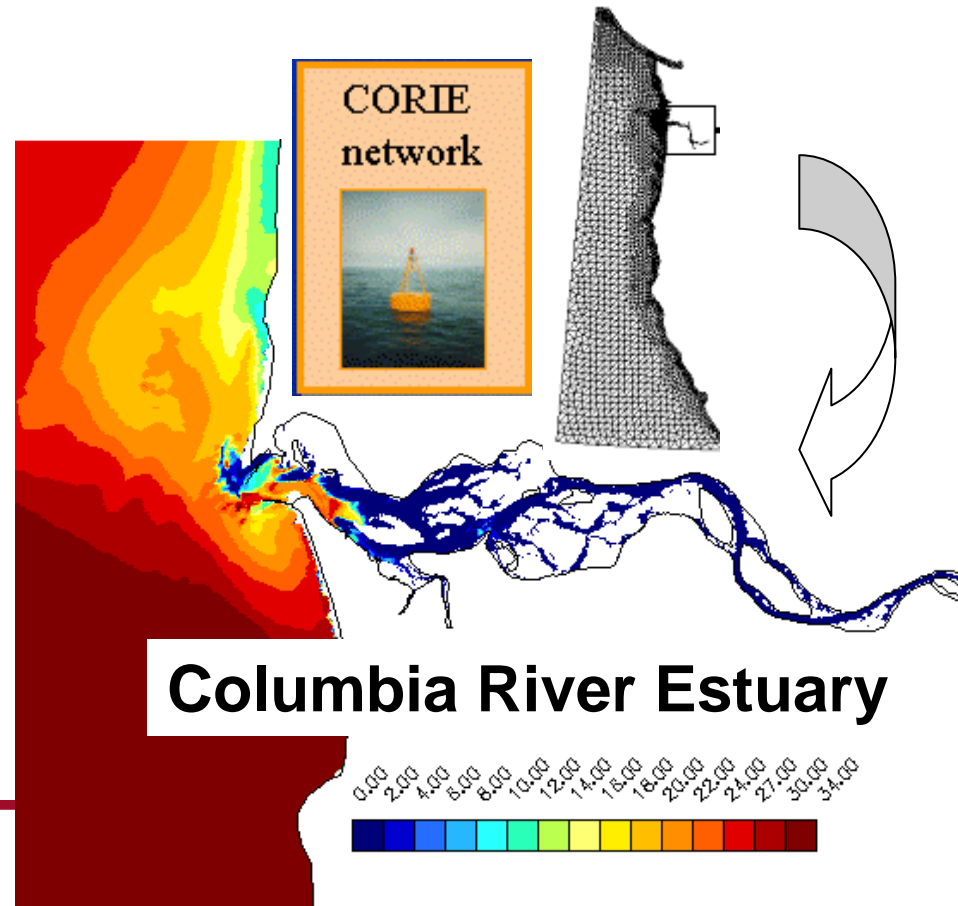
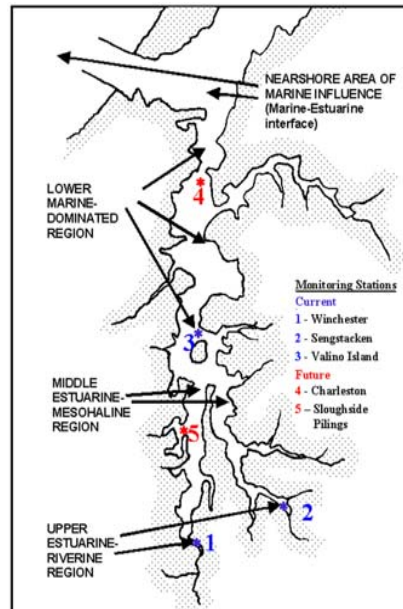
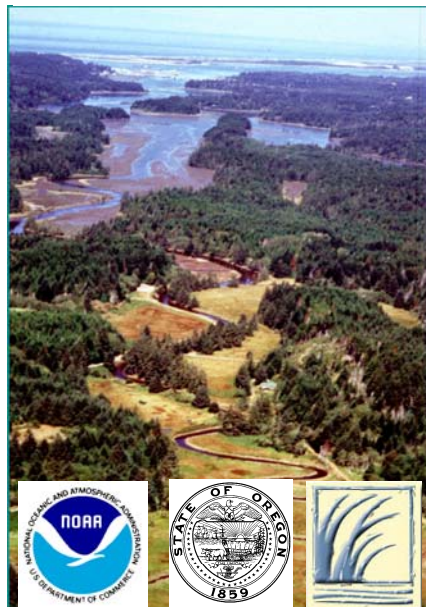


Puget Sound, WA

Willapa Bay, WA



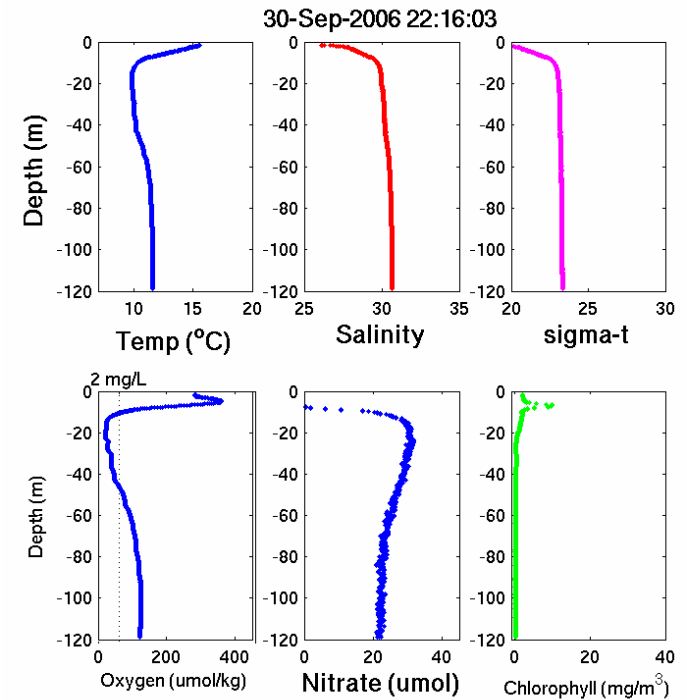
South Slough Estuary, OR





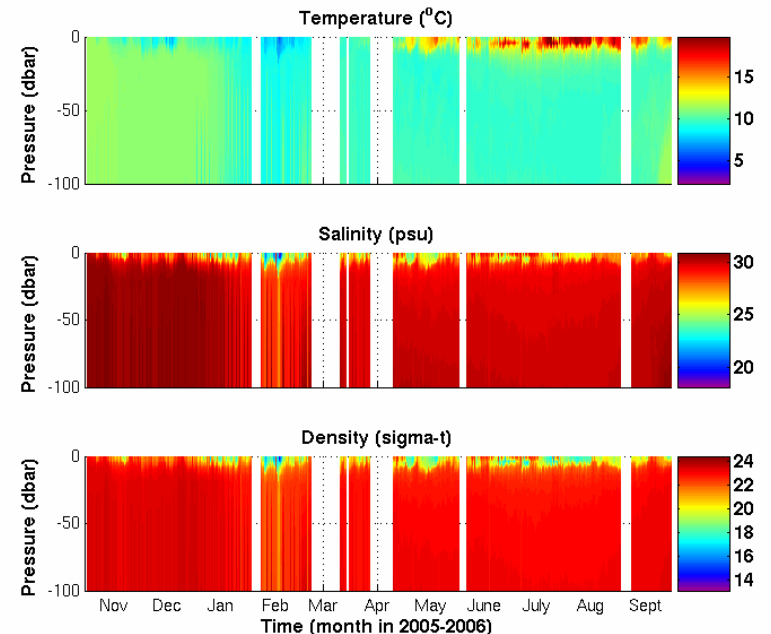
Example Real-Time Data Products available from ORCA buoys through NANOOS now...

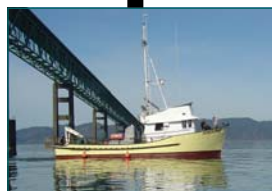
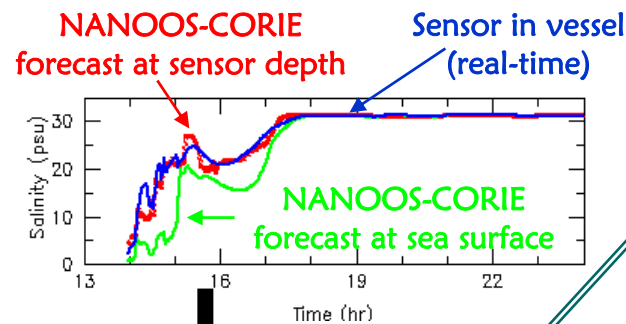
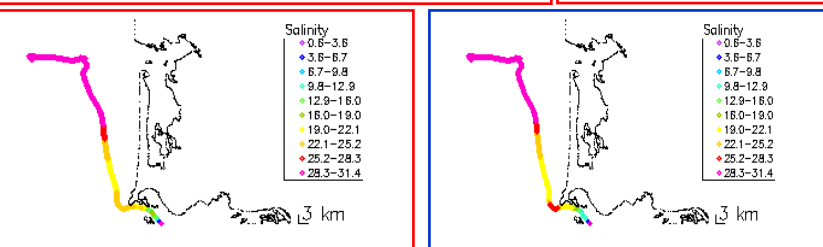
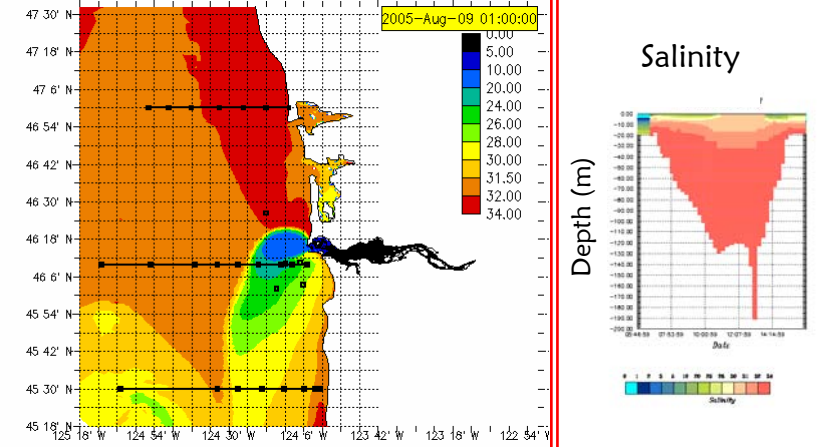
*Weather every 10 minutes,
water conditions every 2 hours,
& cumulative time series*



Duckabush Location Oct 01 2006 20:53:01

Temperature	57.6	Degrees F
Wind Speed	4	mph
Wind Speed Avg	4	mph
Rain Rate	0.00	in/hr
Solar Radiation	0	watts/meter^2
Humidity	72	%
Wind Direction	NNE	





- M/V Forerunner
- F/V Piky
- R/V Wecoma

OGI01

OGI02

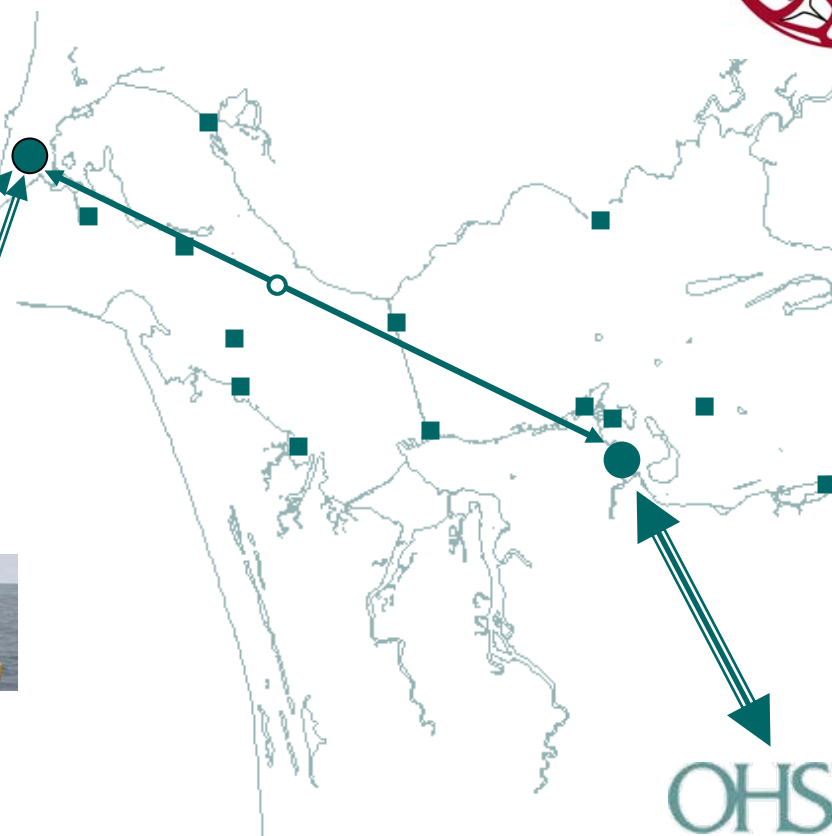


Vision

- Marine data & forecasts aboard every vessel
- Every vessel as a data source

NANOOS Pilot Project

- Demonstrated feasibility
- Seeks partnerships

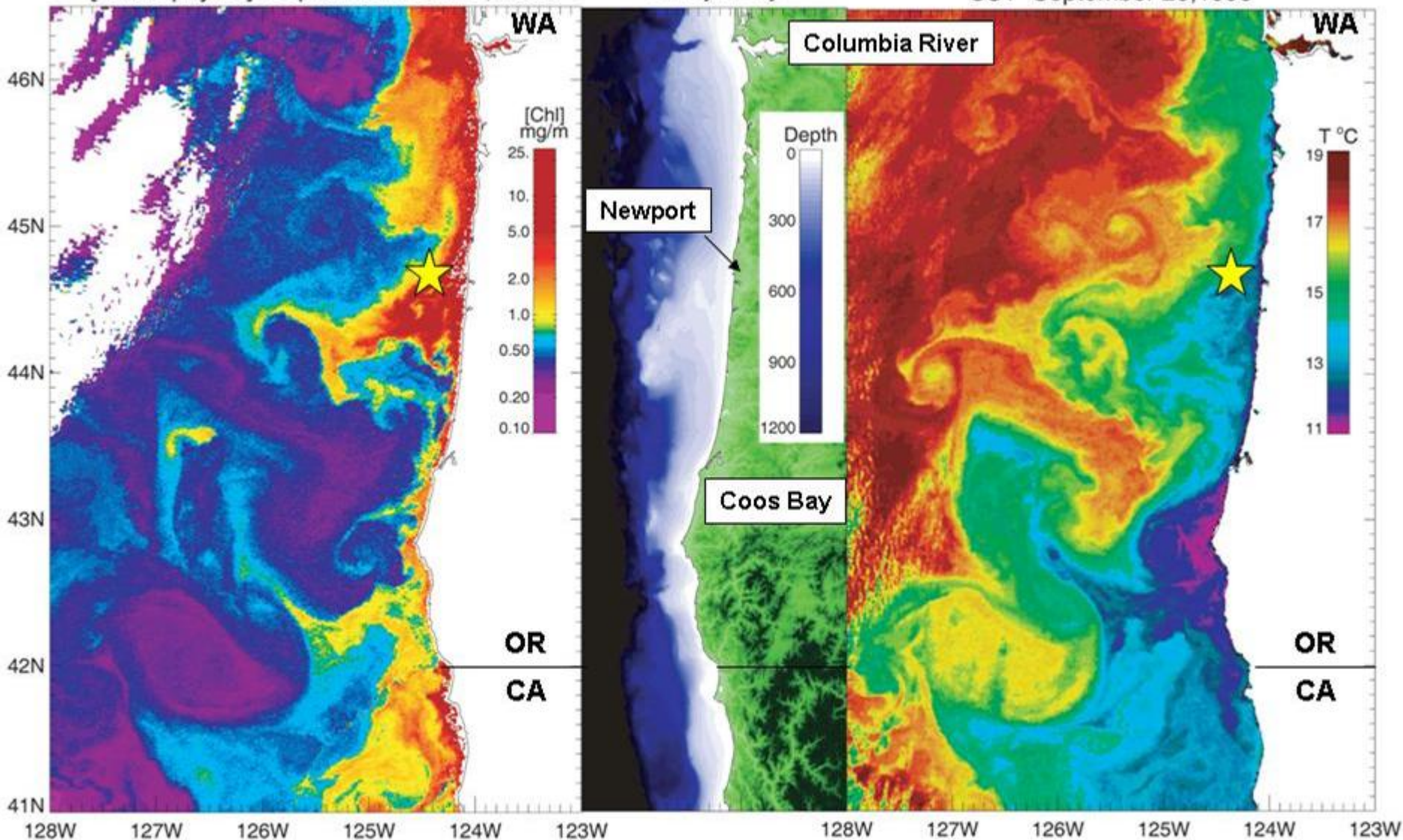


OHSU

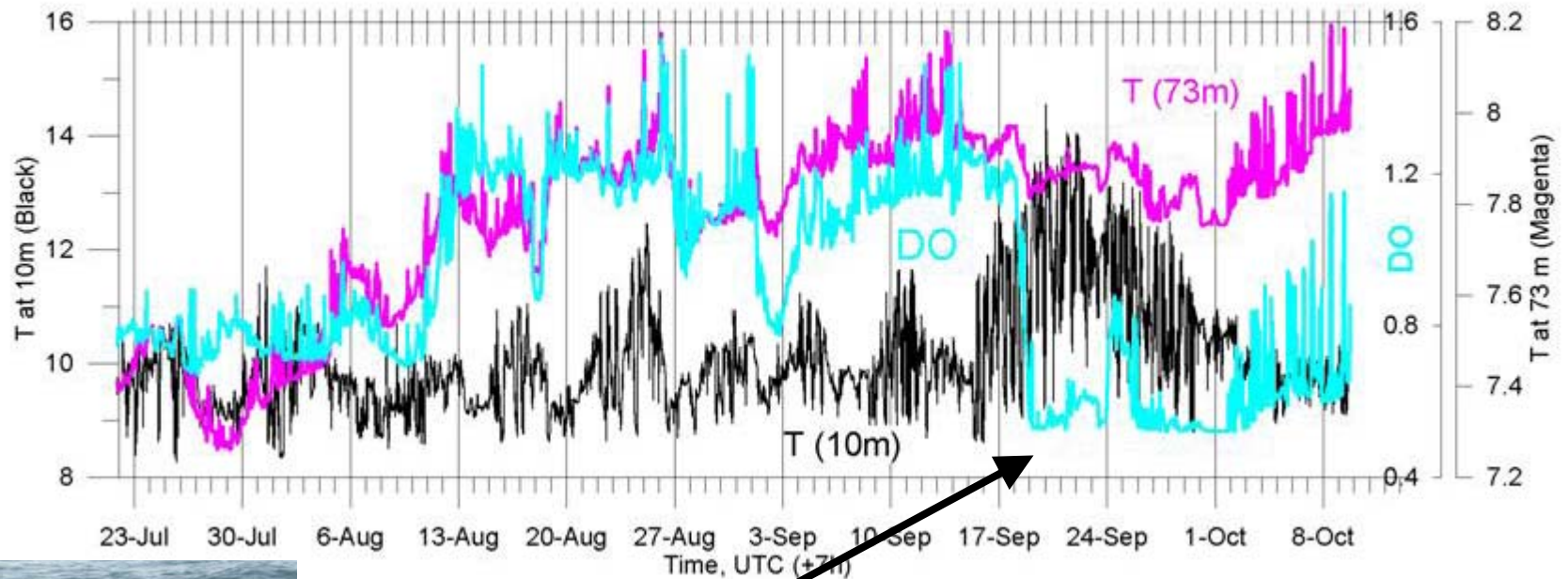
[Chlorophyll-a] September 26 & 27, 1998

Bathymetry

SST September 26, 1998



2006 OrCOOS Buoy Data (water depth 81 m)



hypoxia



OrCOOS
Oregon Coastal Ocean Observing System



