

# Bering Sea and Aleutian Islands Integrated Ecosystem Research Program North Pacific Research Board Observer Poster 3242 p. 201 BSIERP

Clarence Pautzke and Francis Wiese

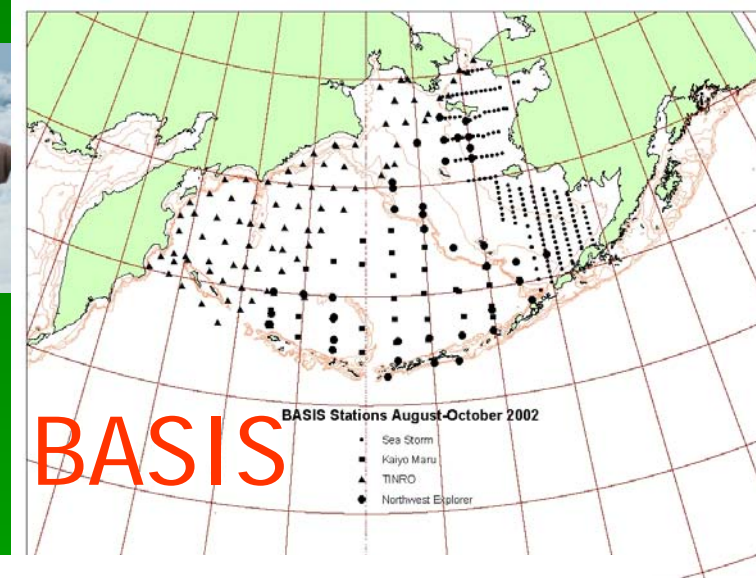
PICES XV  
Aka Renga Soko, Yokohama, Japan  
October 15, 2006

The North Pacific Research Board  
Clarence Pautzke, Executive Director  
1007 W. Third Ave., Suite 100  
Anchorage, AK 99501  
[www.nprb.org](http://www.nprb.org)

# NPRB : Bering Sea and Aleutian Islands Integrated Ecosystem Plan

- Questions

1. Climate induced change
2. Processes regulating fish, birds and mammals
3. Quantify and separate human and natural impacts
4. Link upper and lower trophic levels



Six years of funding to one research group starting in June 2007.

The first of many six year cycles.

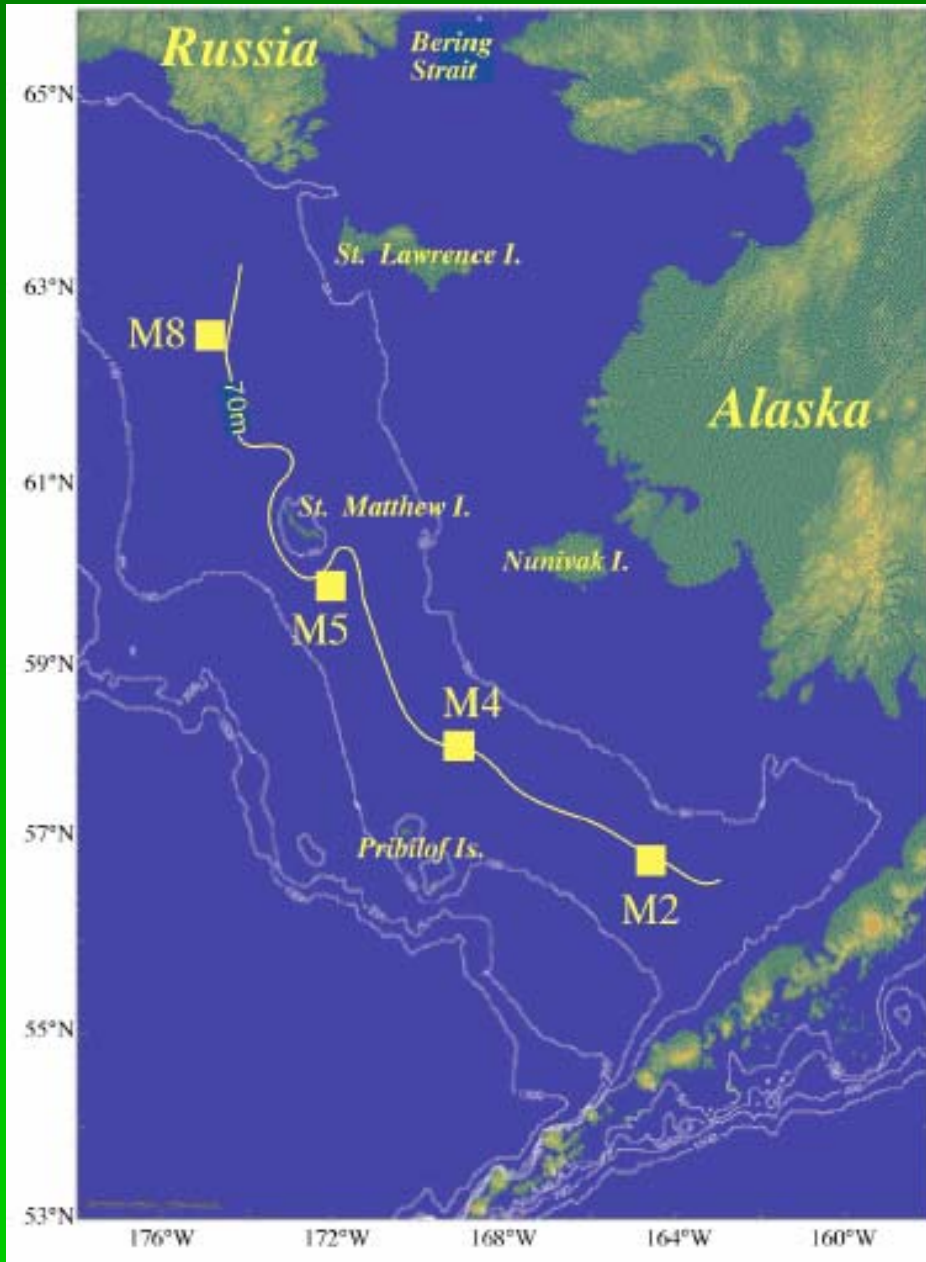


# Monitoring the Bering Sea

- Four moorings along the 70-m isobath: temperature, salinity, fluorescence, nutrients, currents
- Spring and fall hydrographic transects: temperature, salinity, O<sub>2</sub>, fluorescence, nutrients, chlorophyll, zooplankton

## Results

- 2006 reversed trend of 5 consecutive years with reduced ice cover (80-100% reduced from 1972) and increased temperature (~3°C).
- Sharp front divides the warmer, more saline southern shelf from the colder, fresher northern shelf.



# NPRB Science Plan Incorporating ...

- Gulf of Alaska Ecosystem Monitoring GEM
- GLOBEC Northeast Pacific
- BEST (U.S. National Science Foundation)
- AOOS/IOOS/GOOS

Please see the poster, thanks