

# **Approach to standardization of the research trawl surveys**

**M.A. Mizyurkin, A.I. Shevchenko, S.E. Astafyev**

Pacific Research Fisheries Center (TINRO-center),

Shevchenko Alley, Vladivostok 690950, Russia

Fig. 2 Size composition of fish in catch of midwater trawl depends position of  
footrope

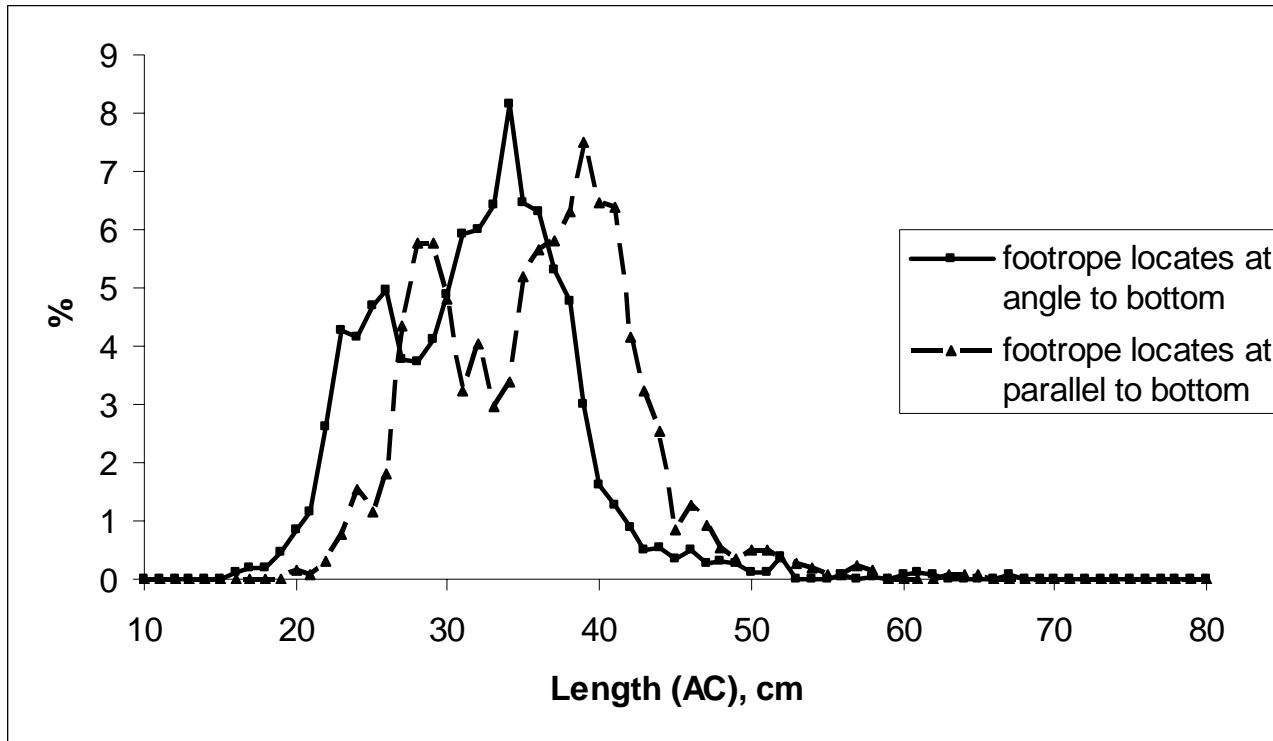


Fig. 3 Size composition of fish in catch of bottom trawl depends position of footrope

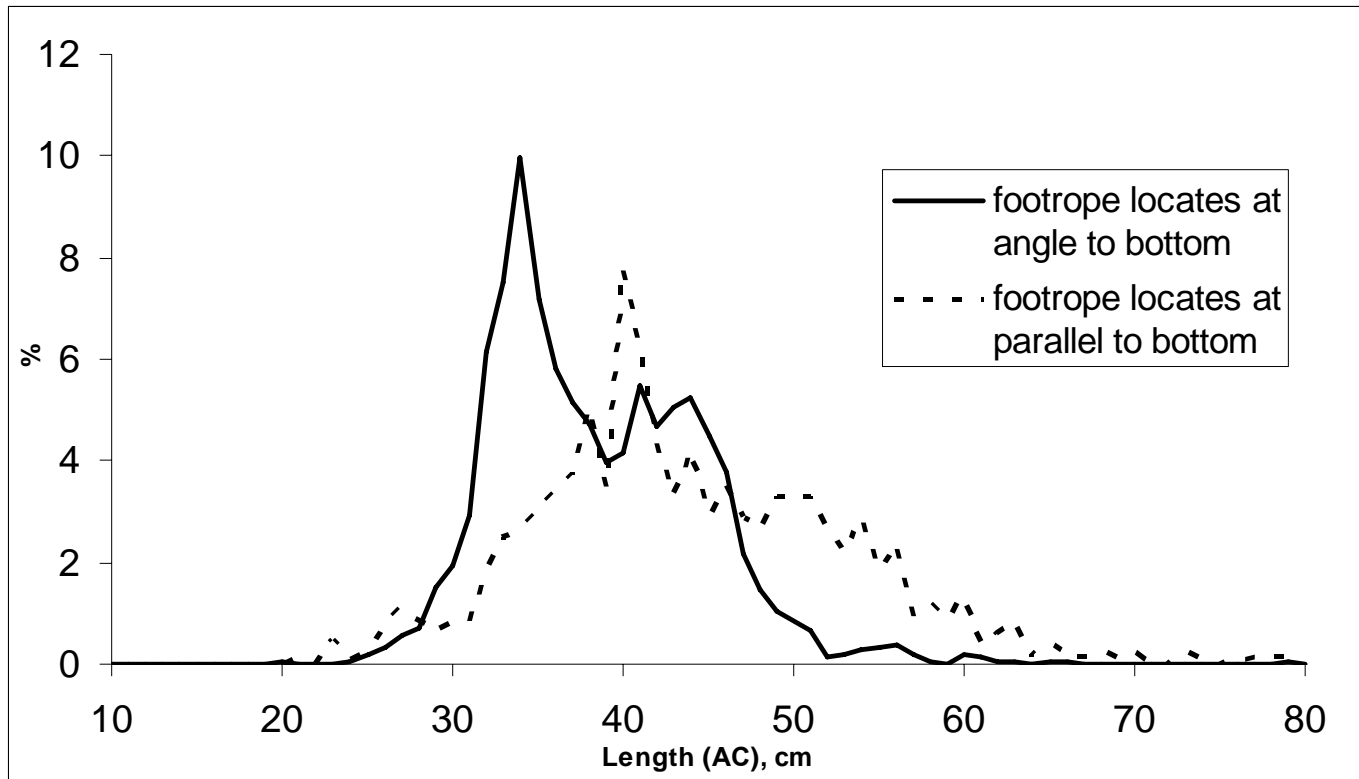


Fig. 4. Relationships of trawled water volume (1), catch of japanese perl-side (Maurolicus muelleri) (2), and catch ability coefficient depends of tow speed

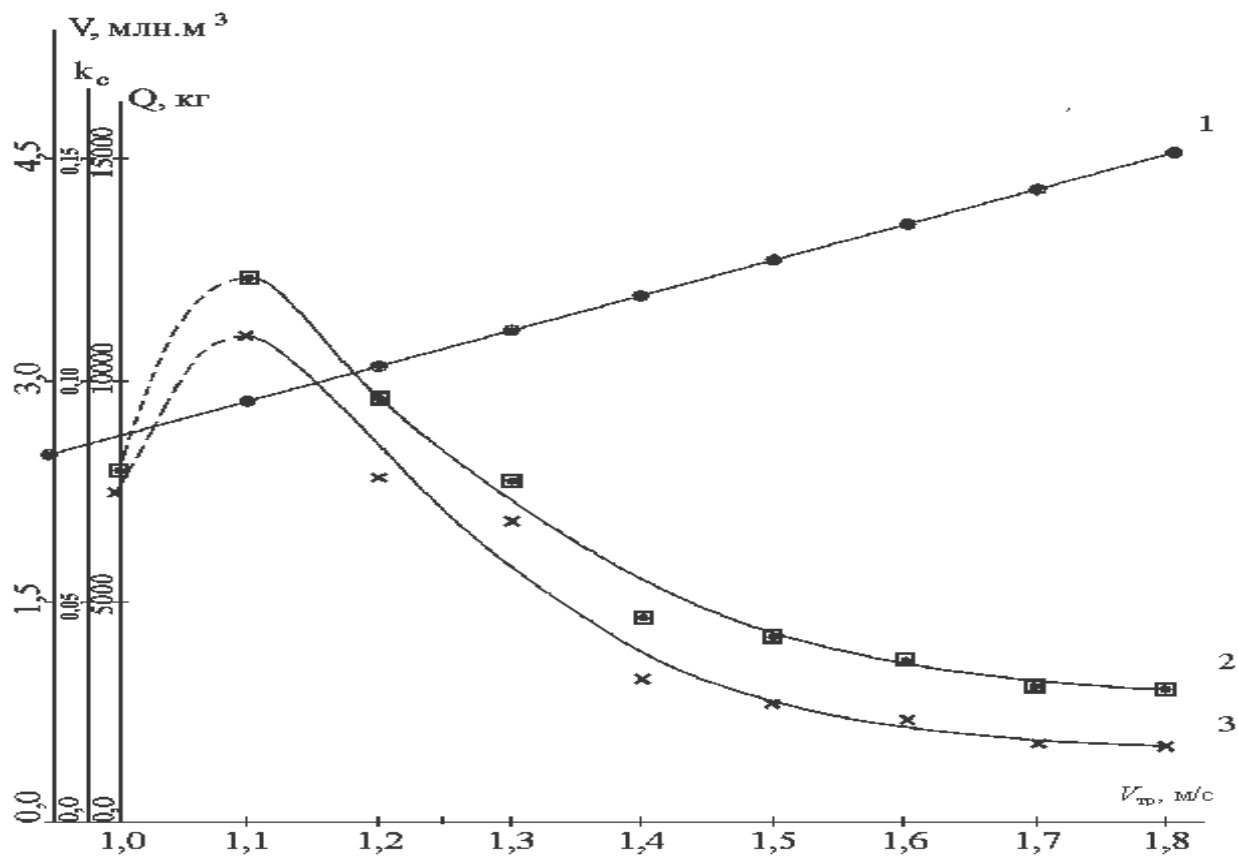


Fig.5. Relationship of pollock catch/1hour tow depends of tow speed

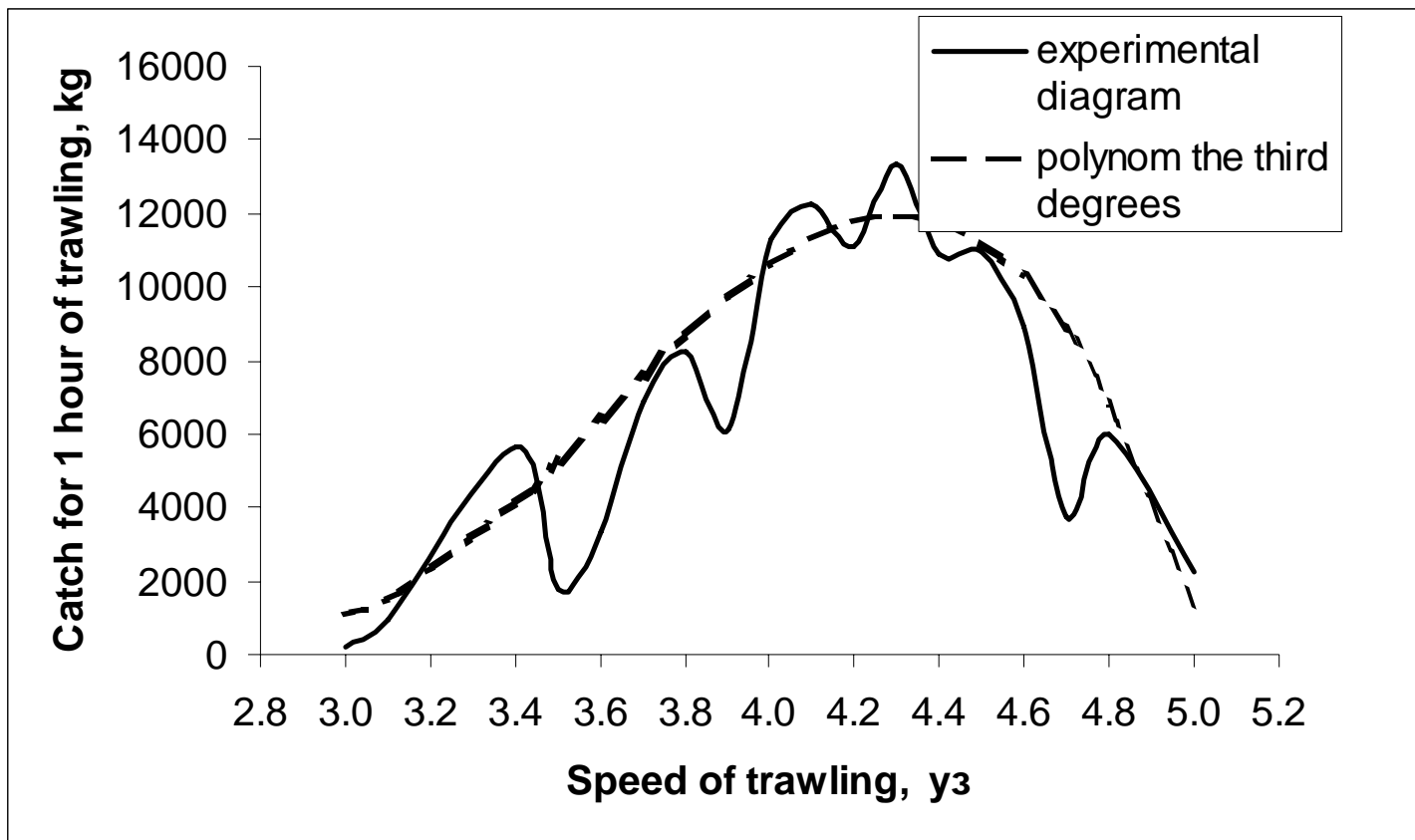


Fig. 6. Relationship of pollock catch/1 hour tow depends of cables length

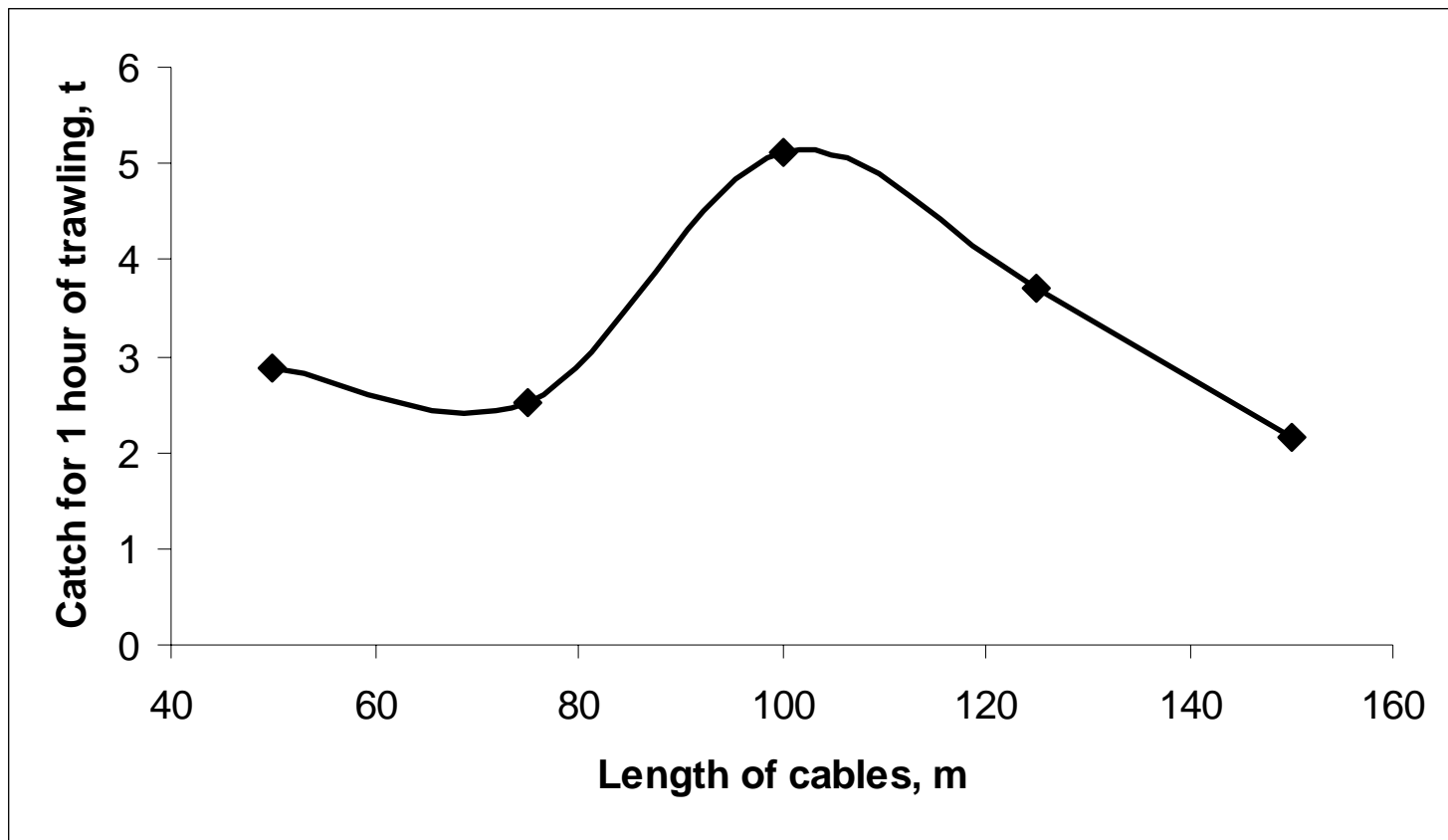


Fig. 7. Relationship of pollock length in catch of midwater trawl (near bottom tow) depends of trawl vertical opening

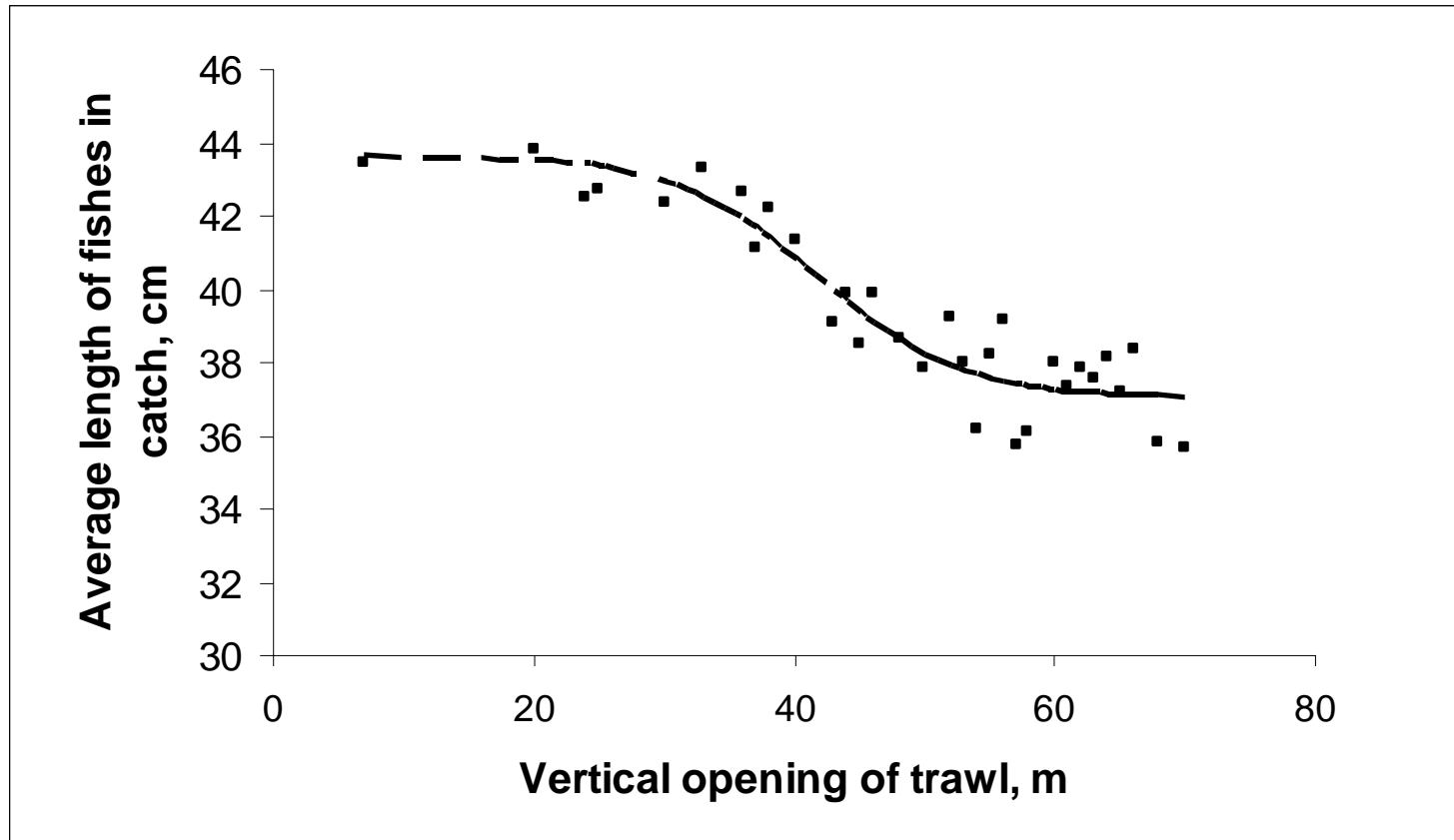


Fig. 8. Escape of fish from different parts of midwater trawl

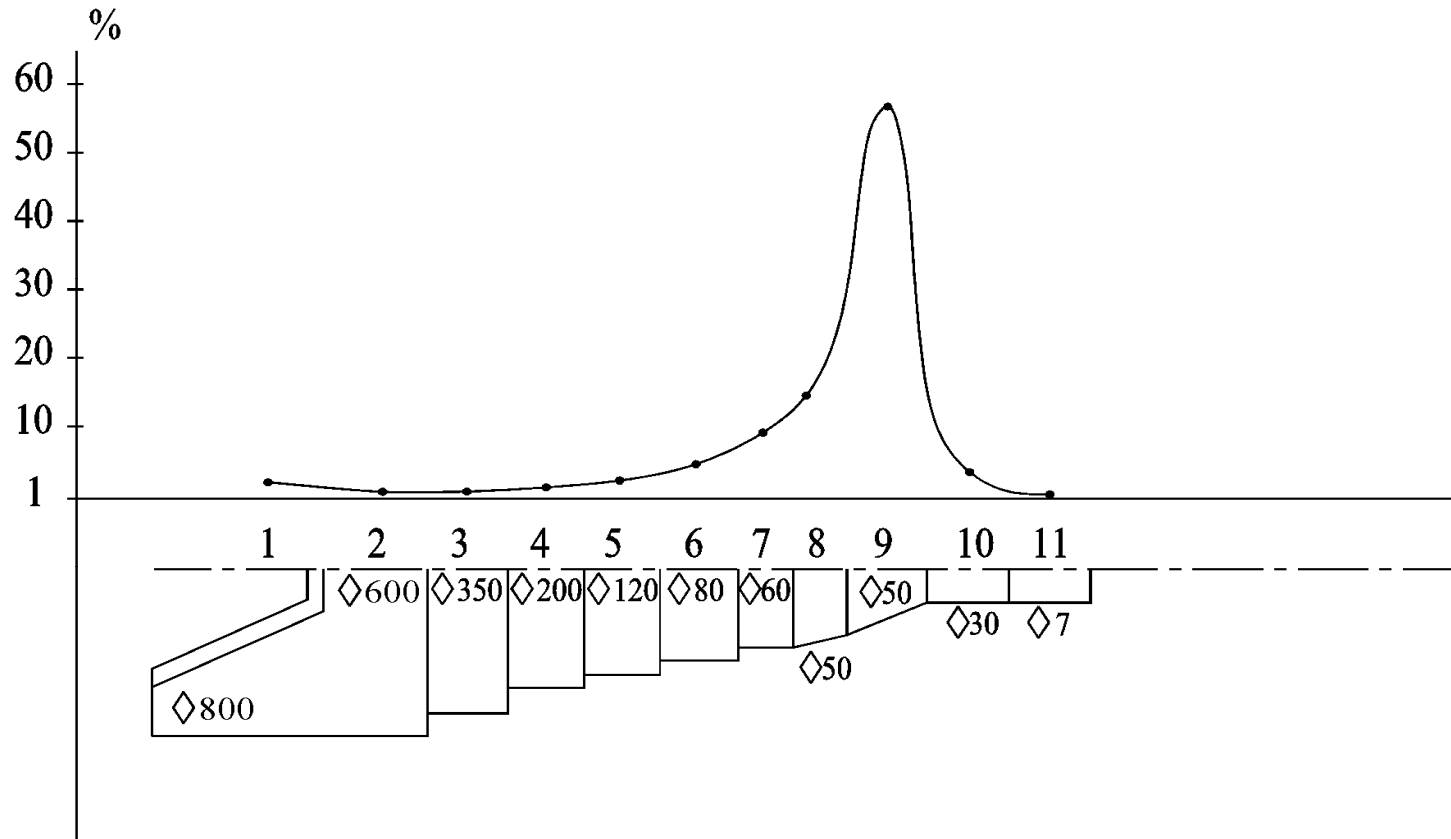




Fig. 9. Escape of fish from different parts of bottom trawl

