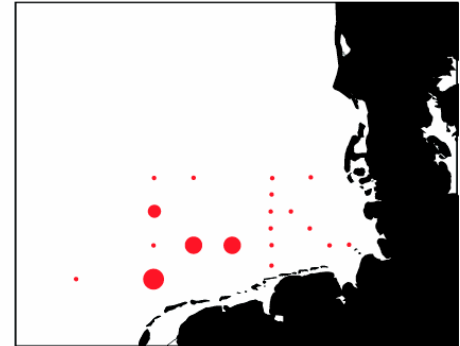
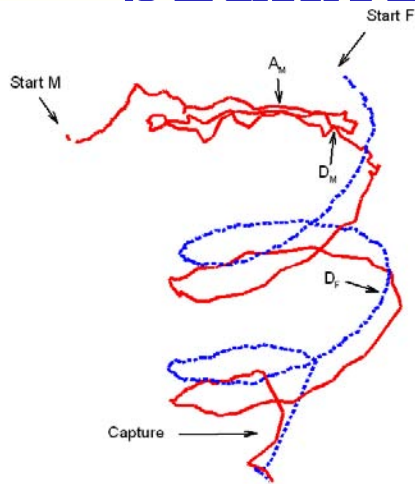


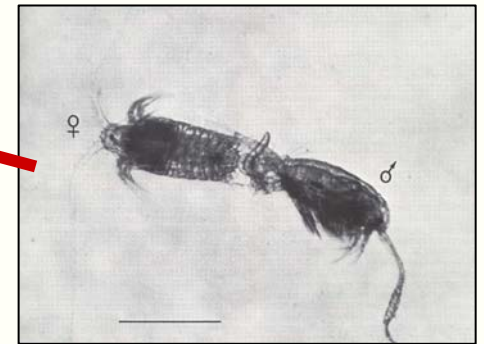
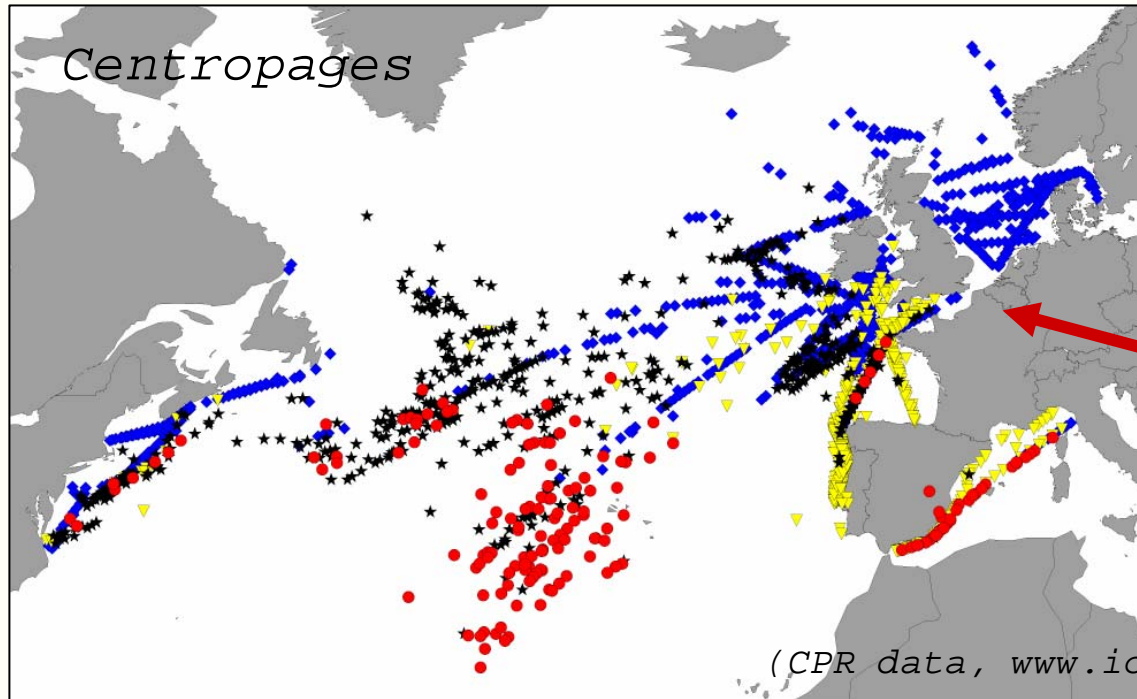
Chasing all kinds: Heterospecific mating and reproductive isolation in planktonic marine copepods



Erica Goetze

Danish Institute for Fisheries Research,
Charlottenlund, Denmark

Mating ecology and reproductive isolation in planktonic copepods



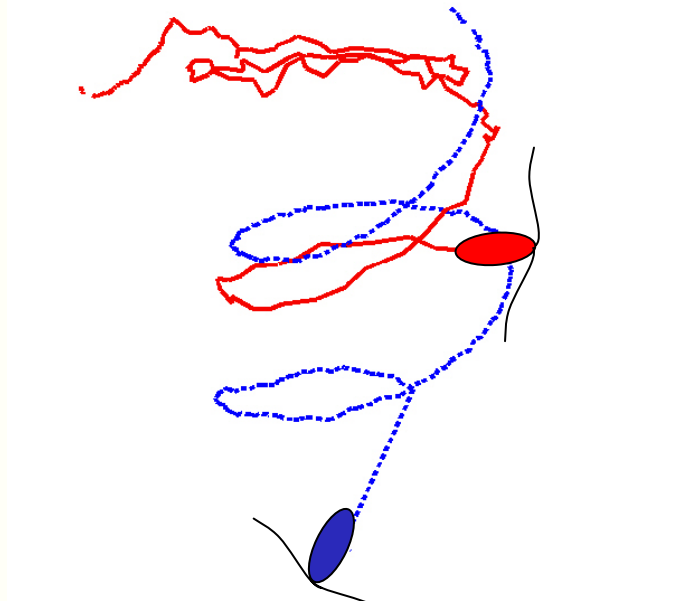
(Blades, 1977)

What biological traits serve as reproductive isolating barriers between planktonic species?

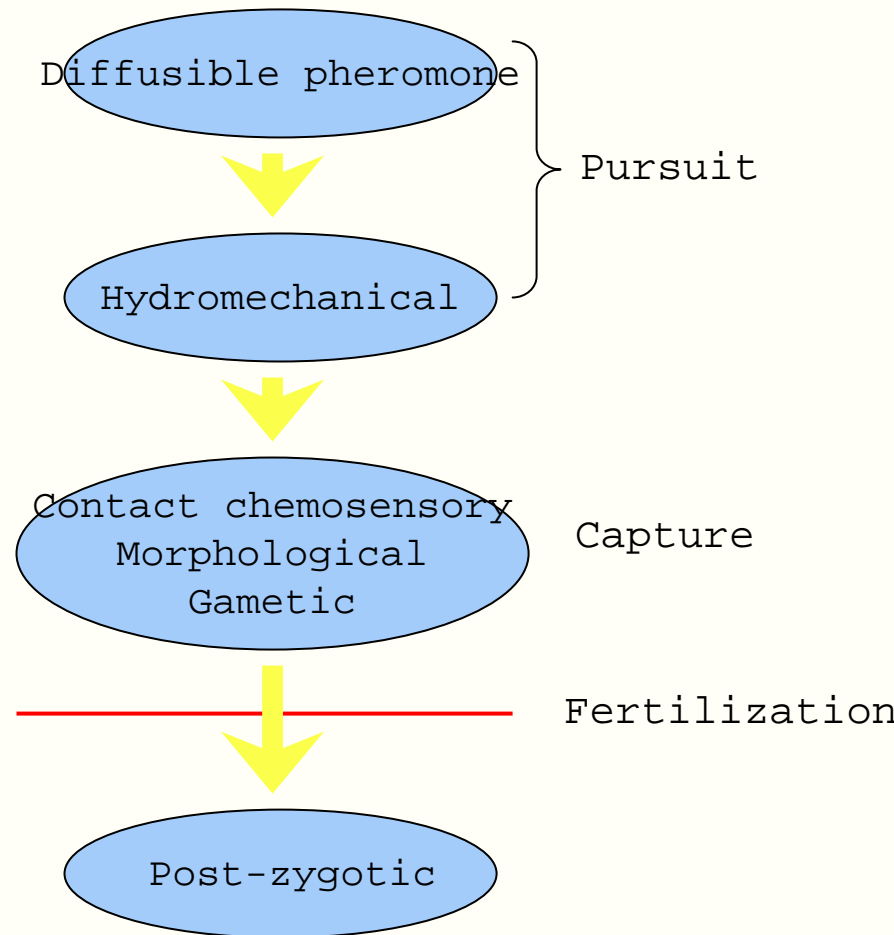
How do these barriers evolve?

Copepods: How to find the *right* mate?

Pre-mating isolation:
multiple potential sources of information for species recognition by males



Chronological cue hierarchy

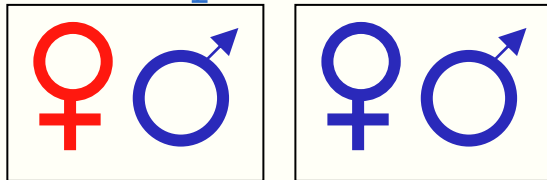


Objectives and Approach

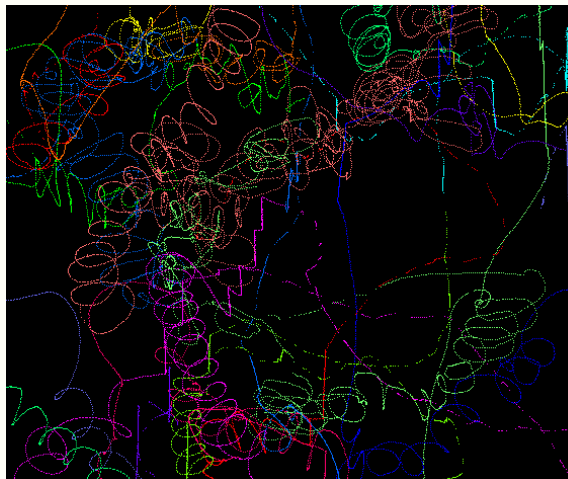
Objectives

1. Identify the mating signals that play a role in species recognition.
2. Determine the frequency and fate of heterospecific mating.
3. Examine the importance of heterospecific mating behavior to the reproductive ecology of natural populations.

Paired Mating
Experiments

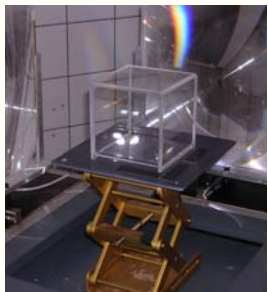


Motility
Experiments



Calculations

- Male mate-search volume rates
- Hetero- and conspecific encounter rates in North Sea populations



Centropages, Temora

Copepod mating: *C. typicus* female +
C. hamatus male

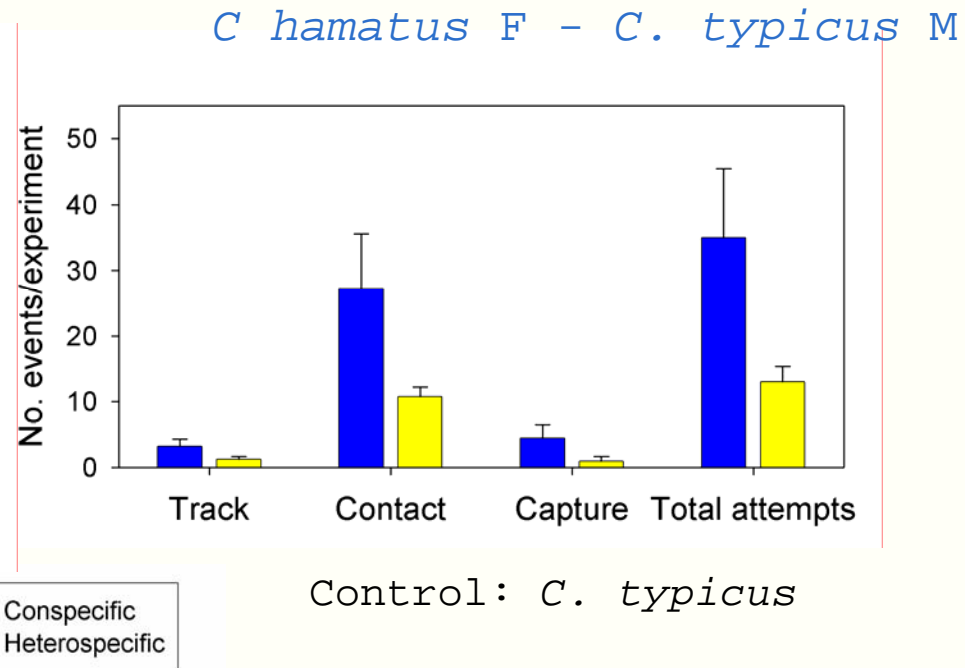
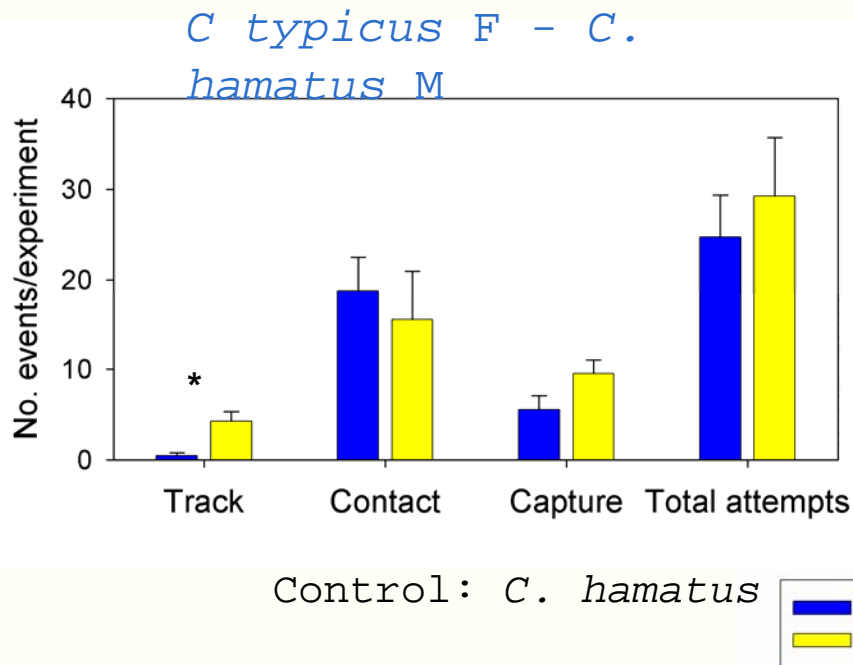
Incomplete pre-mating isolation for 3 species pairs

<i>Centropages</i>	Track	Contact	Capture	Sperm
<i>typicus</i> F' / <i>hamatus</i> M	Y	Y	Y	Y
<i>hamatus</i> F' / <i>typicus</i> M	Y	Y	Y	Y
<i>Temora</i>				
<i>stylifera</i> F' / <i>longicornis</i> M	Y	Y	Y	Y
<i>longicornis</i> F' / <i>stylifera</i> M	Y	Y	Y	N
<i>Centropages</i> - <i>Temora</i>				
<i>typicus</i> F' / <i>longicornis</i> M	Y	Y	N	N
<i>longicornis</i> F' / <i>typicus</i> M	?	?	?	?

Other forms of isolation:

- Reduced frequency of heterospecific mating attempts?
- Gametic (post-mating, prezygotic) or post-zygotic isolation?

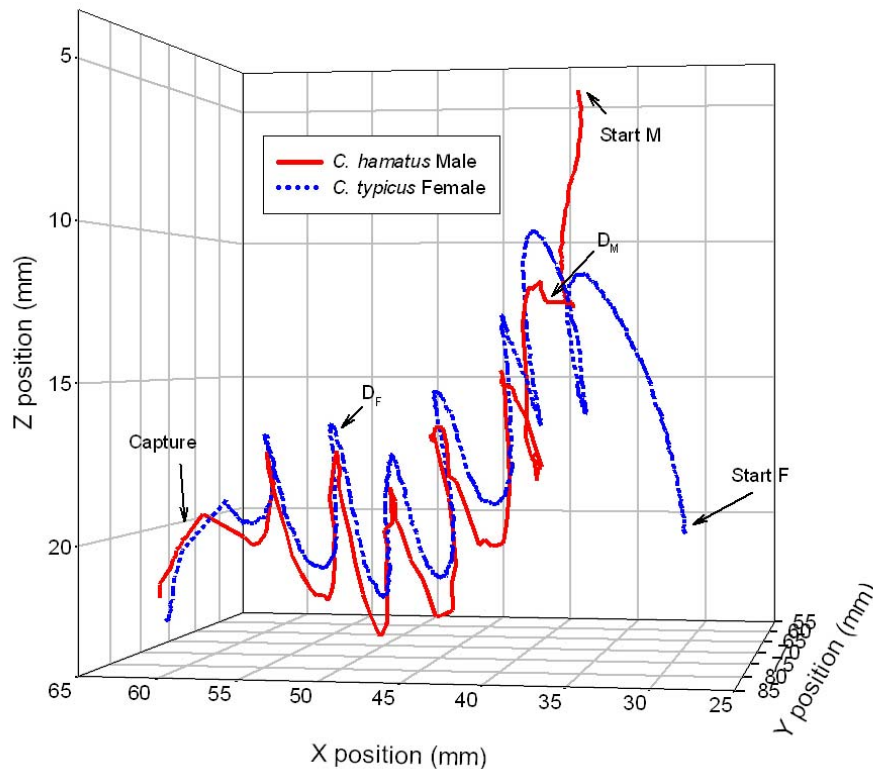
Males frequently pursue the wrong female



1. Males attempt heterospecific mating at **comparable frequencies** to conspecific controls.
2. Spermatophore **transfers rare**.

Mating signals used in species recognition?

Is any **species information** contained in chemical or hydromechanical cues detectable prior to capture?



Observations:

- Male velocity during pursuit
- Duration of chase
- Trail age at encounter
- Length of pursued trail
- Along track distance at encounter
- Proportion of time trail is lost
- Proportion of time

Heterospecific: 24 events
male initiates 14 captures
(14 captures)
tracking in incorrect

Conspecific: 27 events
direction 10 captures
(10 captures)

No species information in the pheromone signal

No difference in male tracking behavior between hetero- and conspecific mating events

Conspecific	Heterospecific	Significant?	
10%	23%		Lost trail
35%	32%		Incorrect initial tracking direction
22.4 (13.4 - 33.8)	25.3 (13.5 - 57.2)	NS	Male velocity during pursuit (mm/sec)
0.8 (0.3-9.6)	1.2 (0.2 - 8.6)	NS	Duration of chase (sec)
4.1 (0.2 - 7.6)	3.1 (0.36 - 26.5)	NS	Trail age at detection (sec)
26.3 (11.7 - 57.9)	26.1 (8.7 - 138.8)	NS	Length of pursued trail (mm)
17.1 (4.8 - 41.4)	16.3 (5.6 - 97.8)	NS	Along track distance at detection (mm)

Heterospecific mating: Important in natural populations?

Is the ocean filled with sexually attractive pheromone trails?

Heterospecific mating: Important in natural populations?

Encounter rate $E = \beta C_f C_m$

β = search volume rate

$$\beta_{\text{trail,cruiser}} = 2Lu_{2D} \left(\sqrt{\frac{D_P L}{v}} + S \right)$$

Kiørboe and Bagoien, 2005

$$\beta_{\text{typicus}} = 168$$

$$\beta_{\text{hamatus}} = 24$$

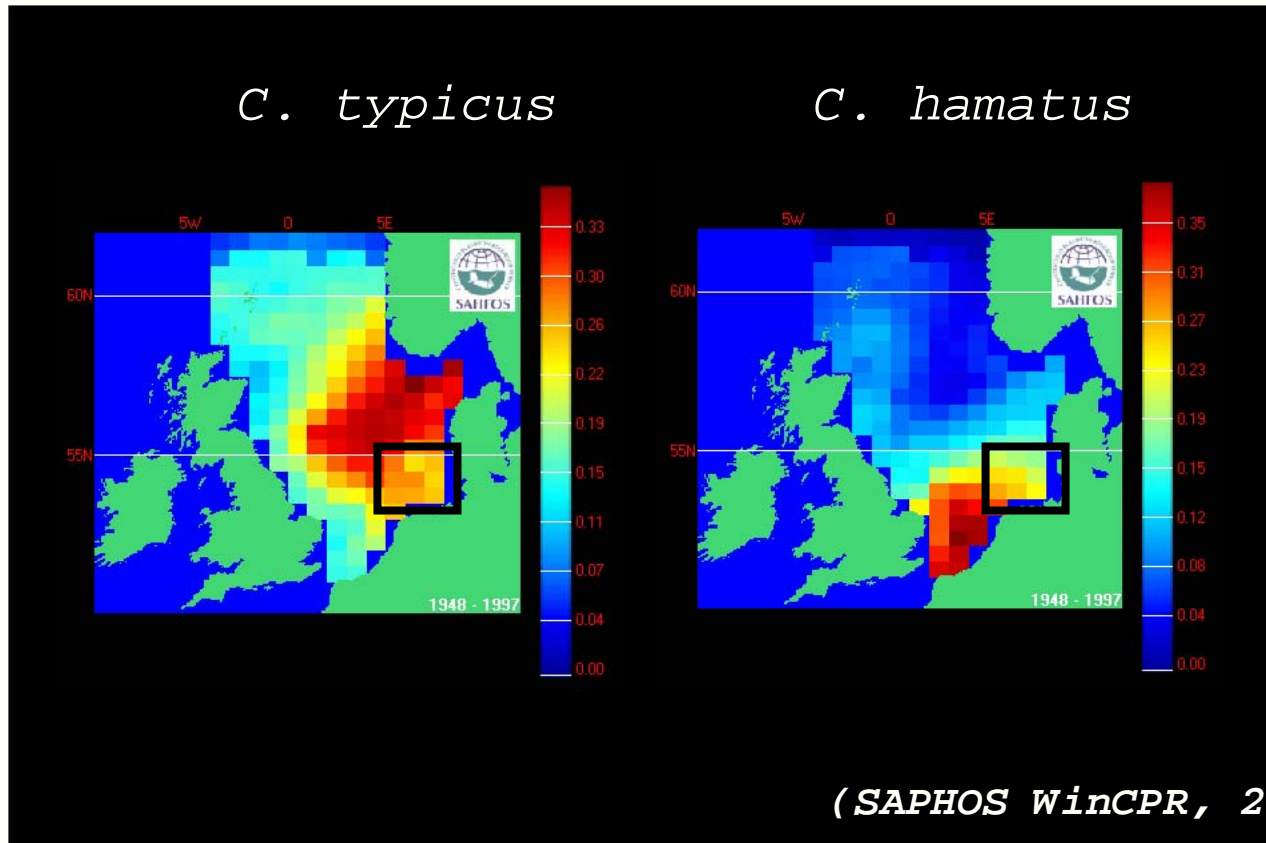
$$\beta_{\text{hamatus M, typicus F}} = 96$$

$$\beta_{\text{typicus M, hamatus F}} = 43$$

	<i>C. hamatus</i>	<i>C. typicus</i>
L	4	15*
u_{2D}	2.48	3.92
v	5.7	6.5*
S	0.13	0.15*

* from Kiørboe and Bagoien, 2005

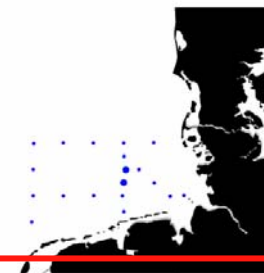
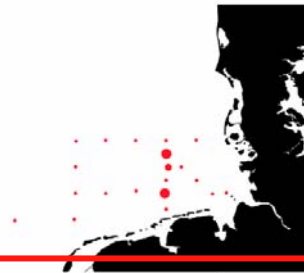
Encounter rates in the North Sea



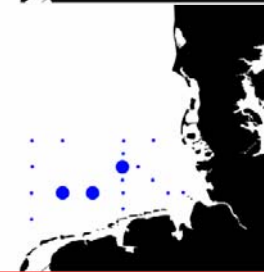
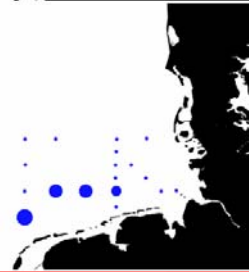
Heterospecific

Conspecific

June



Aug



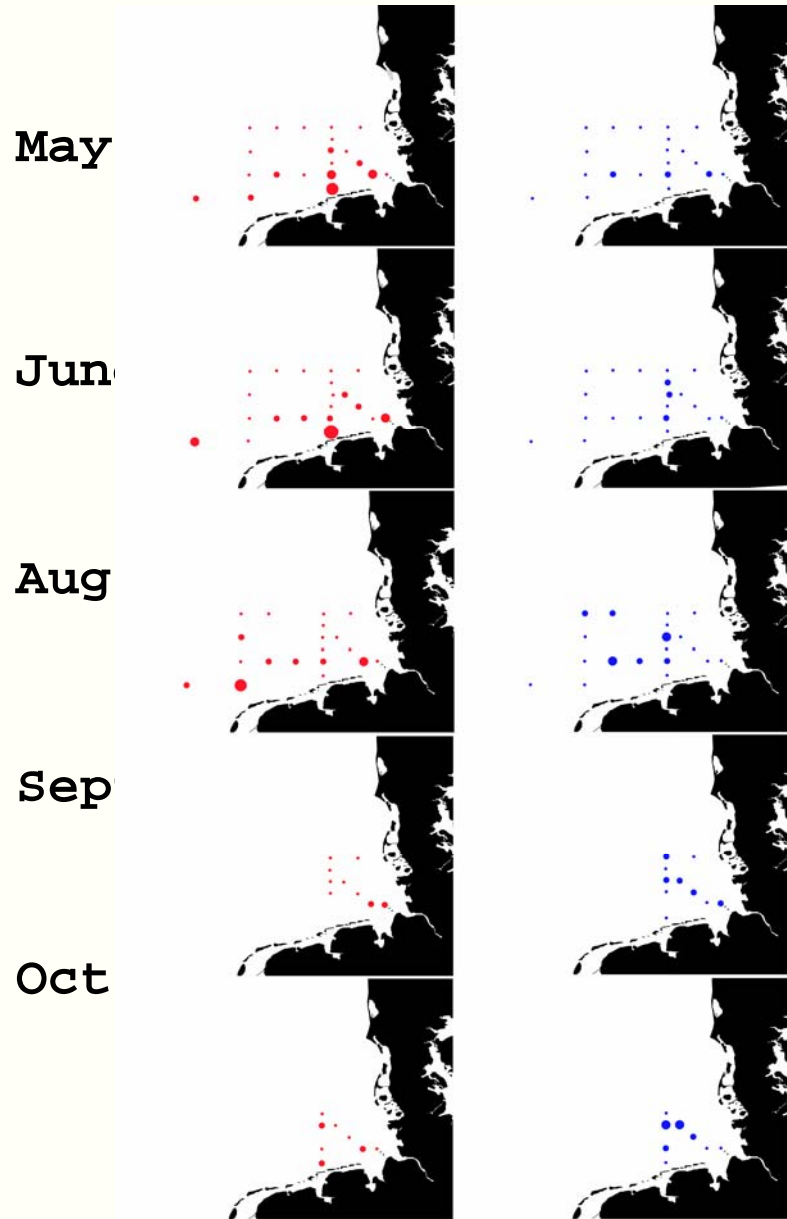
Sept



• 0-1 • 1-10 • 10-100 • 100-1000 • >1000 Encounters $\text{m}^{-3} \text{day}^{-1}$

- Highest heterospecific encounter rate in August ($\sim 2000 \text{ enc m}^{-3} \text{ day}^{-1}$)
- Same order of magnitude for hetero- and conspecific encounter rates

Heterospecific Conspecific



Specific encounter rates, *C. typicus* females:

- *C. typicus* is chemically 'conspicuous' to males of both species, and bears the higher fitness cost of heterospecific mating attempts.
- Often encounters heterospecific males at higher rates than conspecific males (up to 100+ encounters day⁻¹).
- Selection for temporal + spatial isolation of species?

• 0-1 • 1-10 • 10-25 • 25-50 • >50

Encounters female⁻¹ day⁻¹

2004-2005 data courtesy of GLOBEC Germany, and Jürgen Alheit

Broader implications..... so far

1. Diffusible pheromone signal highly non-species specific
 - Males may detect and respond to pheromone trails created by a variety of species
2. No or nearly no species information contained in pheromone or hydromechanical cues
 - Cues detectable at contact - surface proteins, morphological shape - are primary in species recognition
3. Heterospecific mating attempts can be a significant fraction of total mating events during part of the reproductive season
 - Higher pheromone producing, faster, rarer species will suffer the greatest burden of heterospecific mating
 - Selection against heterospecific mating attempts: mechanism to create habitat isolation between congeners?

Thanks to:

Thomas Kiørboe

Espen Bagøien

With funding from:

Danish Natural Research Council

EU Marie Curie Incoming International F

